

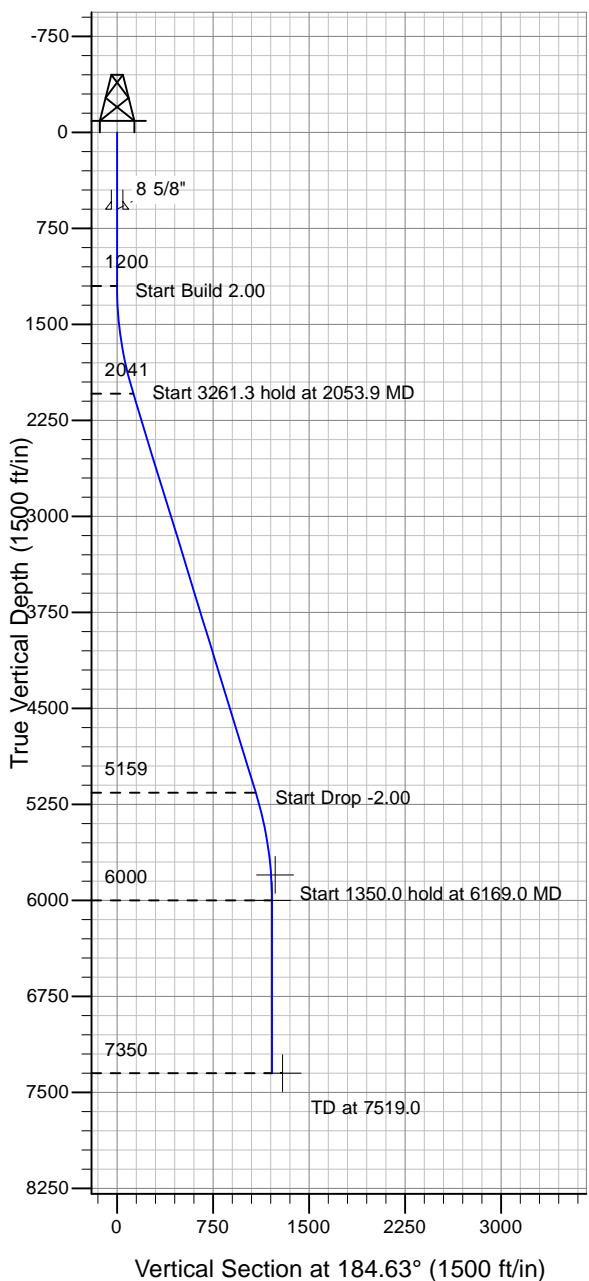
ENSIGN

Directional

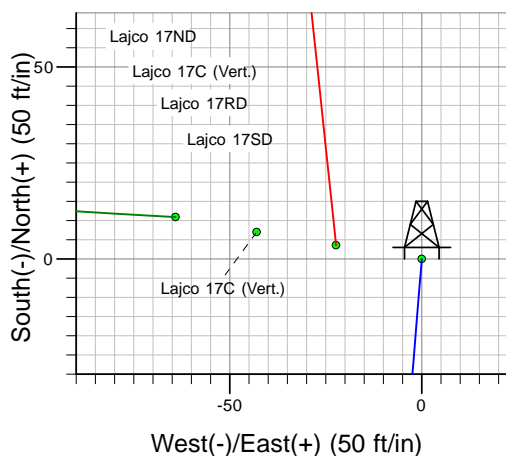
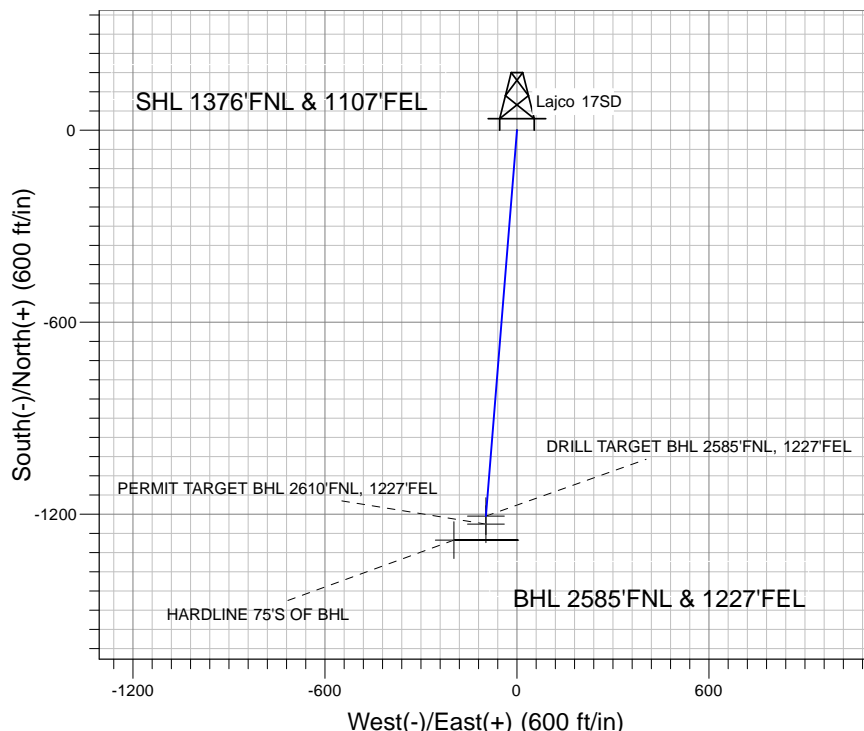
Well Name: Lajco 17SD

Surface Location: Lajco Pad Sec.17-T4N-R67W
 North American Datum 1983 , US State Plane 1983 , Colorado Northern Zone
 Ground Elevation: 4790.0

+N/-S+E/-W Northing Easting Latitude Longitude Slot
 0.0 0.0 1358656.64 3164558.76 40° 18' 59.076 N 104° 54' 35.532 W
 Original Well Elev WELL @ 4803.0ft (Original Well Elev)



PETROLEUM DEVELOPMENT CORP Weld County CO



Lajco Pad Sec.17-T4N-R67W
 Lajco 17SD
 Plan #2 (6-20-10)
 9:46, June 23 2010



Azimuths to True North
 Magnetic North: 9.08°

Magnetic Field
 Strength: 53185.2snT
 Dip Angle: 67.00°
 Date: 5/19/2010
 Model: IGRF2010

WELLBORE TARGET DETAILS (LAT/LONG)

Name	TVD	+N/-S	+E/-W	Latitude	Longitude	Shape
PERMIT TARGET BHL 2610'FNL, 1227'FEL	5800.0	-1231.3	-97.6	40° 18' 46.908 N	104° 54' 36.792 W	Point
DRILL TARGET BHL 2585'FNL, 1227'FEL	6000.0	-1206.4	-97.6	40° 18' 47.155 N	104° 54' 36.792 W	Point
HARDLINE 75'S OF BHL	7350.0	-1281.4	-197.6	40° 18' 46.414 N	104° 54' 38.083 W	Polygon

SECTION DETAILS

Sec	MD	Inc	Azi	TVD	+N/-S	+E/-W	DLeg	TFace	VSec	Target
1	0.0	0.00	0.00	0.0	0.0	0.0	0.00	0.00	0.0	
2	1200.0	0.00	0.00	1200.0	0.0	0.0	0.00	0.00	0.0	
3	2053.9	17.08	184.63	2041.3	-125.9	-10.2	2.00	184.63	126.3	
4	5315.1	17.08	184.63	5158.7	-1080.5	-87.4	0.00	0.00	1084.0	
5	6169.0	0.00	0.00	6000.0	-1206.4	-97.6	2.00	180.00	1210.3	DRILL TARGET BHL 2585'FNL, 1227'FEL
6	7519.0	0.00	0.00	7350.0	-1206.4	-97.6	0.00	0.00	1210.3	