

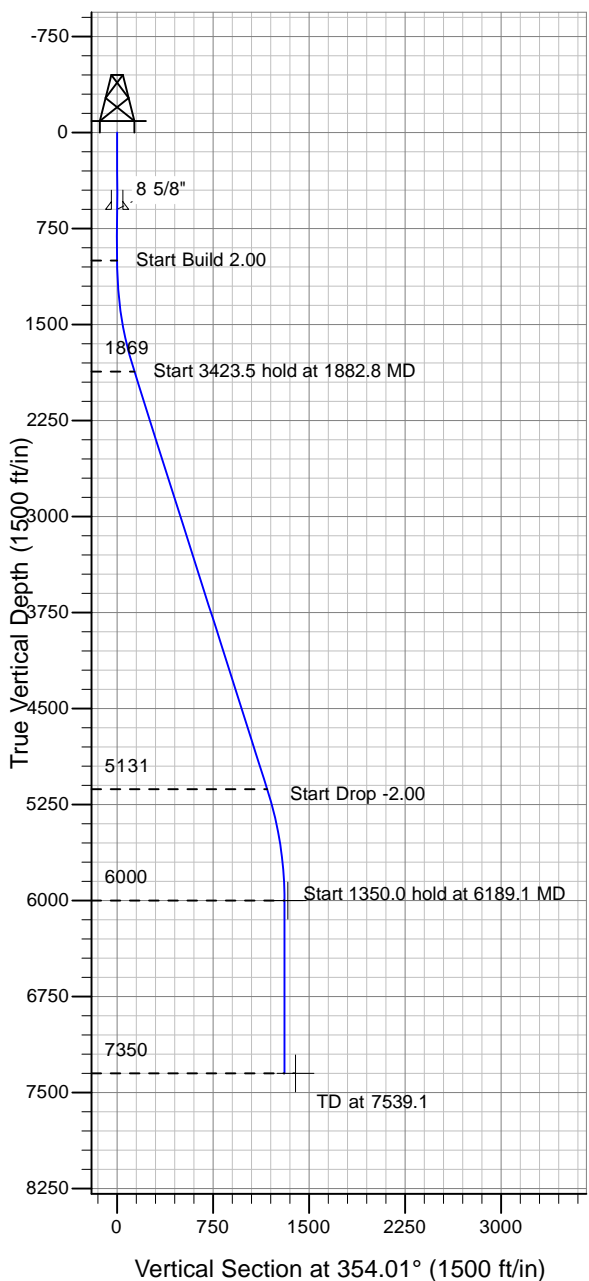
ENSIGN

Directional

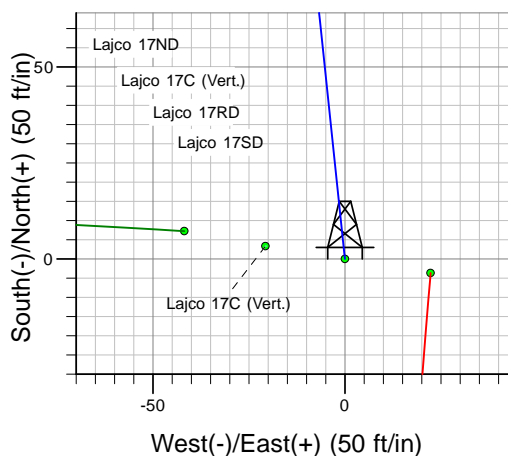
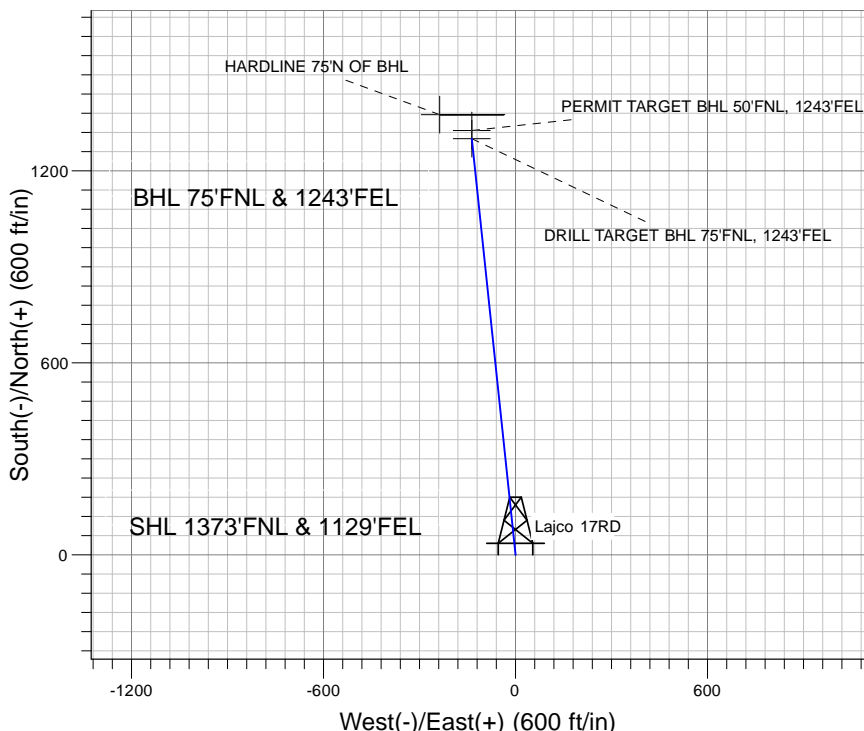
Well Name: Lajco 17RD

Surface Location: Lajco Pad Sec.17-T4N-R67W
 North American Datum 1983 , US State Plane 1983 , Colorado Northern Zone
 Ground Elevation: 4790.0

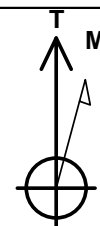
+N/-S+E/-W Northing Easting Latitude Longitude Slot
 0.0 0.0 1358660.14 3164536.42 40° 18' 59.112 N 104° 54' 35.820 W
 Original Well Elev WELL @ 4803.0ft (Original Well Elev)



PETROLEUM DEVELOPMENT CORP Weld County CO



Lajco Pad Sec.17-T4N-R67W
 Lajco 17RD
 Plan #2 (6-20-10)
 9:40, June 23 2010



Azimuths to True North
 Magnetic North: 9.08°

Magnetic Field
 Strength: 53185.2snT
 Dip Angle: 67.00°
 Date: 5/19/2010
 Model: IGRF2010

WELLBORE TARGET DETAILS (LAT/LONG)

Name	TVD	+N/-S	+E/-W	Latitude	Longitude	Shape
DRILL TARGET BHL 75'FNL, 1243'FEL	6000.0	1301.0	-136.6	40° 19' 11.968 N	104° 54' 37.584 W	Point
PERMIT TARGET BHL 50'FNL, 1243'FEL	6000.0	1326.1	-136.6	40° 19' 12.216 N	104° 54' 37.584 W	Point
HARDLINE 75'N OF BHL	7350.0	1376.0	-236.6	40° 19' 12.710 N	104° 54' 38.875 W	Polygon

SECTION DETAILS

Sec	MD	Inc	Azi	TVD	+N/-S	+E/-W	DLeg	TFace	VSec	Target
1	0.0	0.00	0.00	0.0	0.0	0.0	0.00	0.00	0.0	
2	1000.0	0.00	0.00	1000.0	0.0	0.0	0.00	0.00	0.0	
3	1882.8	17.66	354.01	1868.9	134.2	-14.1	2.00	354.01	134.9	
4	5306.3	17.66	354.01	5131.1	1166.8	-122.5	0.00	0.00	1173.3	
5	6189.1	0.00	0.00	6000.0	1301.0	-136.6	2.00	180.00	1308.2	DRILL TARGET BHL 75'FNL, 1243'FEL
6	7539.1	0.00	0.00	7350.0	1301.0	-136.6	0.00	0.00	1308.2	