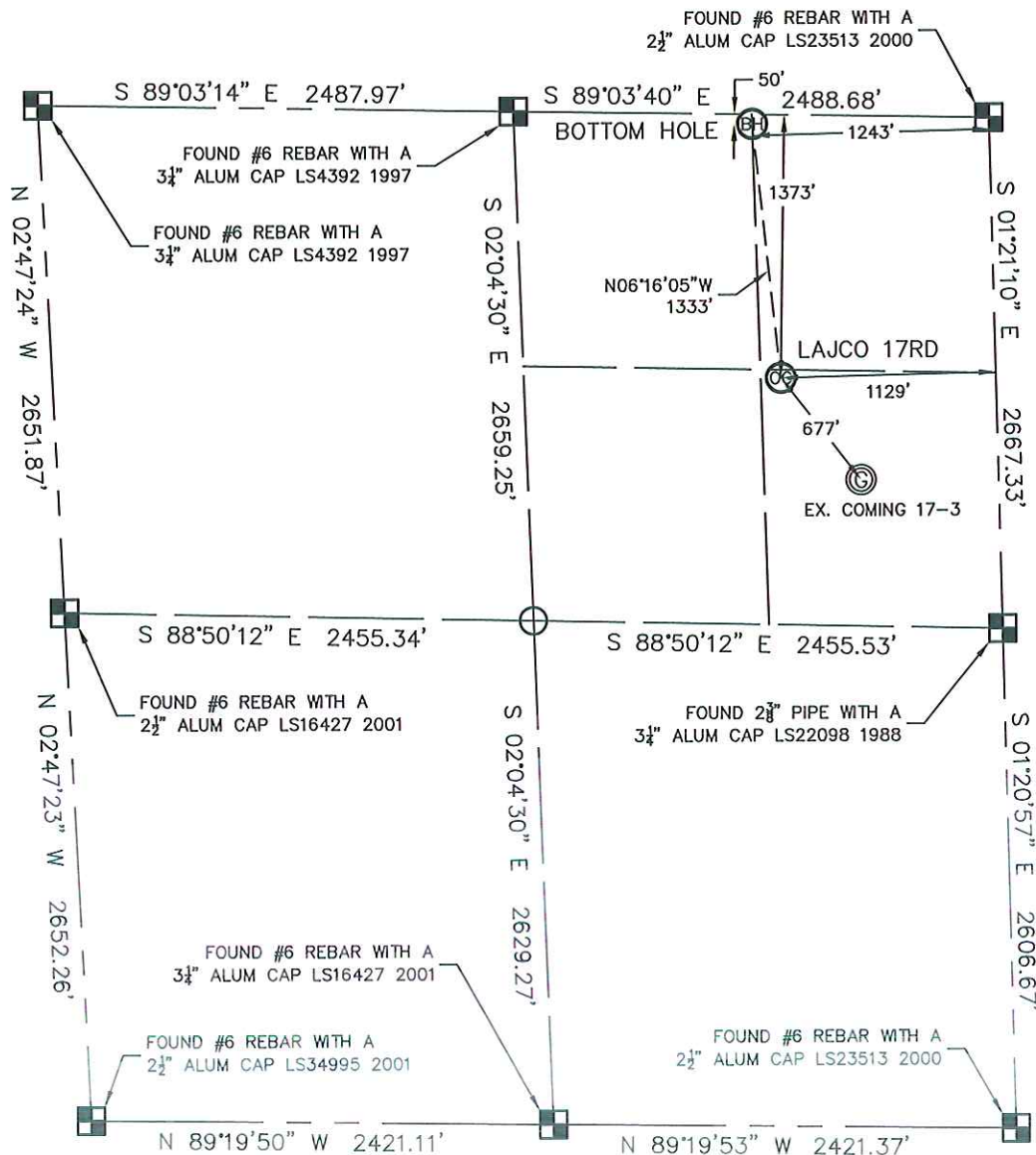


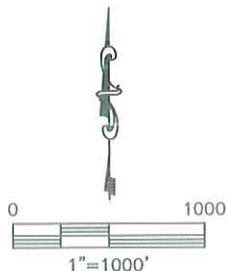
WELL LOCATION CERTIFICATE

THIS MAP DOES NOT REPRESENT A BOUNDARY SURVEY

SECTION: 17
TOWNSHIP: 4N
RANGE: 67W

In accordance with a request from MAC NEUMANN with PETROLEUM DEVELOPMENT CORPORATION King Surveyors Inc. has determined the surface location of the LAJCO 17RD to be 1373' from the NORTH line and 1129' from the EAST line as measured at right angles and the bottom hole to be 50' from the NORTH line and 1243' from the EAST line as measured at right angles from the section lines of Section 17, Township 4 North, Range 67 West of the Sixth Principal Meridian, County of Weld, State of Colorado.

I hereby state that this Well Location Certificate was prepared by me, or under my direct supervision, that the fieldwork was completed on 4-16-2010, for and on behalf of PETROLEUM DEVELOPMENT CORPORATION. That this is not a Land Survey Plat or an Improvement Survey Plat, and that it is not to be relied upon for establishment of fence, building, or other future improvement lines.



NOTE:

- 1) Bearings shown are Grid Bearings of the Colorado State Plane Coordinate System, North Zone, North American Datum 1983/92. The lineal dimensions as contained herein are based upon the "U.S. Survey Foot."
- 2) Ground elevations are based on an observed GPS elevation (NAVD 1988 DATUM).
- 3) NEAREST EXISTING WELL: COMING 17-3 677' SOUTHEAST
- 4) IMPROVEMENTS: See VISIBLE IMPROVEMENTS exhibit for all visible improvements within 400' of well head.
- 5) SURFACE USE: CROP FIELD
- 6) FIELD OPERATOR: DALLAS NIELSEN

NOTE

According to Colorado law, you must commence any legal action based upon any defect in this W.L.C. within three years after you discover such defect. In no event, may any action based upon any defect in this survey be commenced more than ten years after the date of the certificate shown hereon. (13-80-105 C.R.S.)

LEGEND

- = ALIQUOT MONUMENT AS DESCRIBED
- = CALCULATED POSITION

SURFACE LOCATION
LATITUDE: 40.31642°N
LONGITUDE: 104.90995°W
PDOP: 1.2
ELEV: 4790'
1/4,1/4: SE1/4NE1/4
NEAREST PROPERTY LINE: 919' SOUTHEAST

BOTTOM HOLE
LATITUDE: 40.32006°N
LONGITUDE: 104.91044°W

Michael Chad Dilka = On Behalf Of King Surveyors, Inc.
Colorado Licensed Professional Land Surveyor #38106
PROJECT#: 2010132

6/14/2010