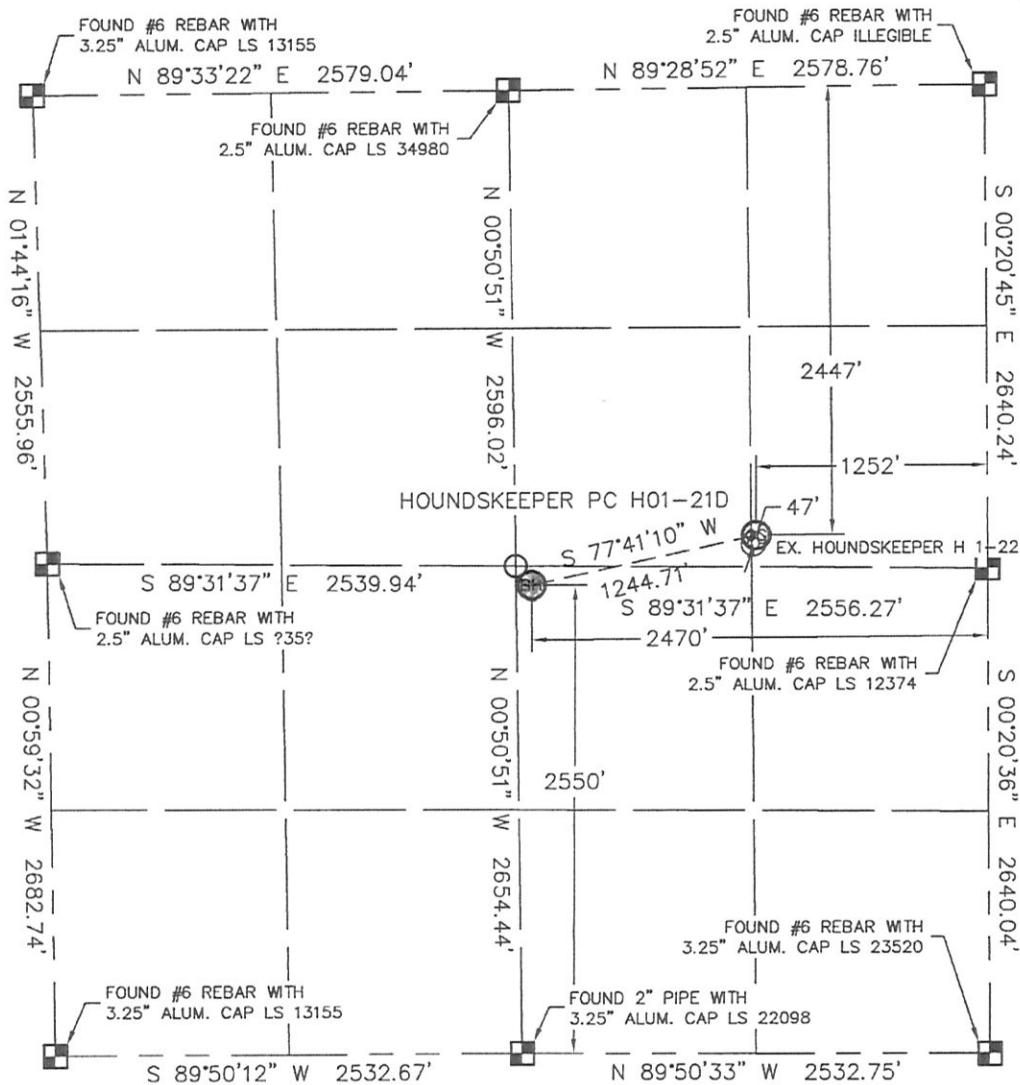


# WELL LOCATION CERTIFICATE

THIS MAP DOES NOT REPRESENT A BOUNDARY SURVEY

SECTION: 1  
TOWNSHIP: 3N  
RANGE: 65W



In accordance with a request from Robbie Miller with Noble Energy Inc. Lat40°, LLC has determined the surface location of the HOUNDSKEEPER PC H01-21D to be 2447' from the NORTH line and 1252' from the EAST line and the bottom hole to be 2550' from the SOUTH line and 2470' from the EAST line as measured at right angles from the section line of Section 1, Township 3 North, Range 65 West of the Sixth Principal Meridian, County of Weld, State of Colorado.

I hereby state that this Well Location Certificate was prepared by me, or under my direct supervision, that the fieldwork was completed on 4/22/10, for and on behalf of Noble Energy Inc. That this is not a Land Survey Plat or an Improvement Survey Plat, and that it is not to be relied upon for establishment of fence, building, or other future improvement lines.

SURFACE LOCATION	BOTTOM HOLE
LATITUDE: 40.25477N	LATITUDE: 40.25408N
LONGITUDE: 104.60696W	LONGITUDE: 104.61133W
PDOP: 1.6	
ELEV: 4870	
1/4, 1/4: SE1/4NE1/4	
NEAREST PROPERTY LINE: 172' SOUTH	

**NOTE:**

- 1) Bearings shown are Grid Bearings of the Colorado State Plane Coordinate System, North Zone, North American Datum 1983/2007. The lineal dimensions as contained herein are based upon the "U.S. Survey Foot."
- 2) Ground elevations are based on an observed GPS elevation (NAVD 1988 DATUM).
- 3) NEAREST EXISTING WELL: EX. HOUNDSKEEPER H 1-22, 47' SOUTHWEST
- 4) IMPROVEMENTS: See VISIBLE IMPROVEMENTS exhibit for all visible improvements within 400' of disturbed area.
- 5) SURFACE USE: RANGELAND, EX. WELL SITE

**NOTE**

According to Colorado law, you must commence any legal action based upon any defect in this W.L.C. within three years after you discover such defect. In no event, may any action based upon any defect in this survey be commenced more than ten years after the date of the certificate shown hereon. (13-80-105 C.R.S.)

## LEGEND

- = ALIQUOT MONUMENT AS DESCRIBED
- = CALCULATED POSITION

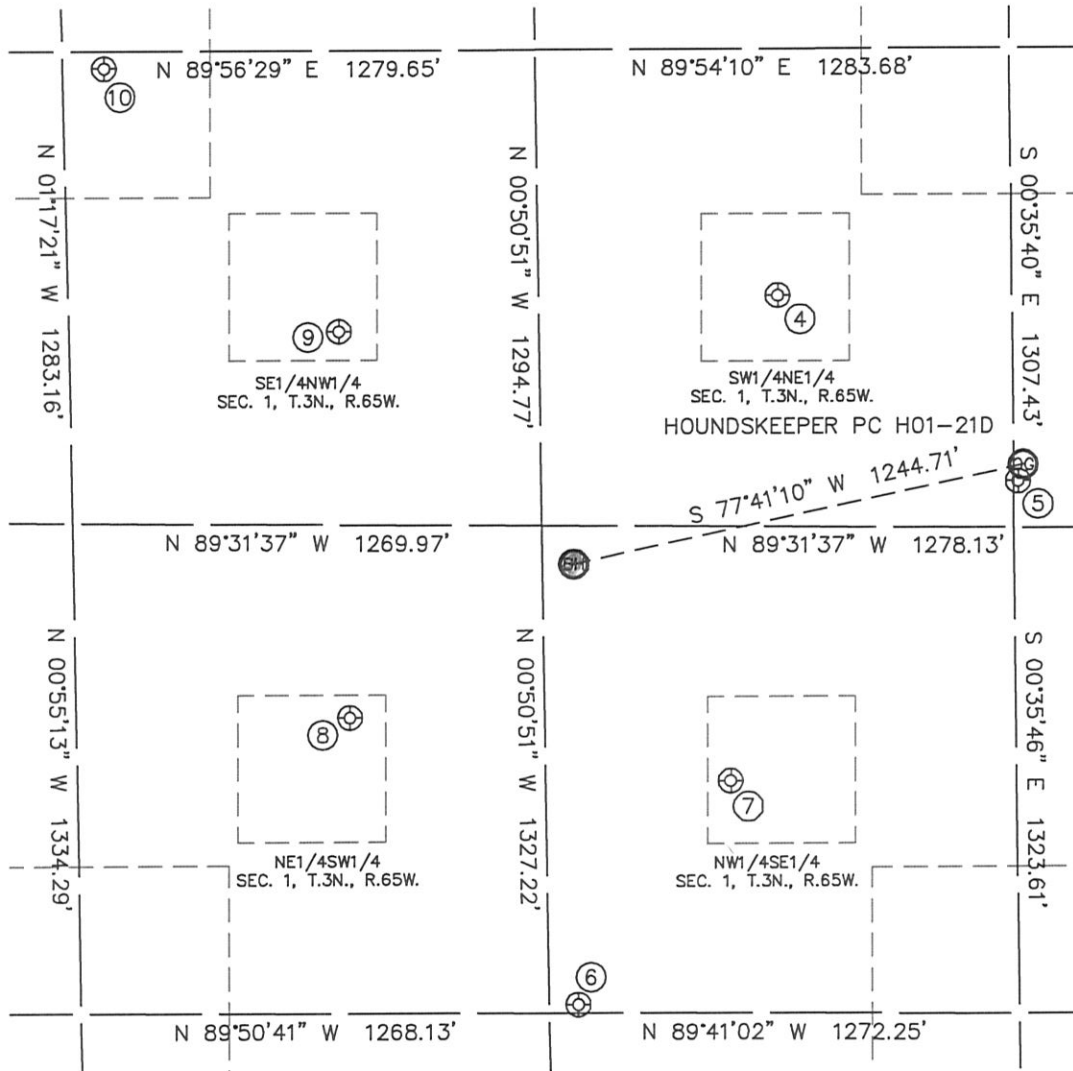


Brian J. Brinkman, on behalf of Lat40°, LLC  
Colorado Licensed Professional  
Land Surveyor No. 38175

PROJECT#: 2010018

# SITE SKETCH

SECTION: 1  
TOWNSHIP: 3N  
RANGE: 65W



④  
HOUNDSKEEPER 1-13  
SW1/4NE1/4  
1978' FNL  
1915' FEL  
LAT-40.25606°N  
LONG-104.60933°W  
PDOP: 1.5  
ELEV: 4874

⑤  
HOUNDSKEEPER H 1-22  
SE1/4NE1/4  
2491' FNL  
1267' FEL  
LAT-40.25465°N  
LONG-104.60702°W  
PDOP: 1.8  
ELEV: 4871

⑥  
SHELTON H 1-24  
NW1/4SE1/4  
1350' FSL  
2466' FEL  
LAT-40.25078°N  
LONG-104.61133°W  
PDOP: 3.7  
ELEV: 4874

⑦  
UPRC 1-10J  
NW1/4SE1/4  
1958' FSL  
2050' FEL  
LAT-40.25244°N  
LONG-104.60983°W  
PDOP: 1.8  
ELEV: 4870

⑧  
UPRC 1-11J  
NE1/4SW1/4  
2135' FSL  
2010' FWL  
LAT-40.25295°N  
LONG-104.61352°W  
PDOP: 5.0  
ELEV: 4858

⑨  
LAURICE 6-1  
SE1/4NW1/4  
2063' FNL  
2004' FWL  
LAT-40.25583°N  
LONG-104.61359°W  
PDOP: 2.2  
ELEV: 4853

⑩  
SHELTON 18-1  
SE1/4NW1/4  
1340' FNL  
1391' FWL  
LAT-40.25782°N  
LONG-104.61584°W  
PDOP: 2.9  
ELEV: 4840

