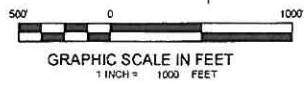
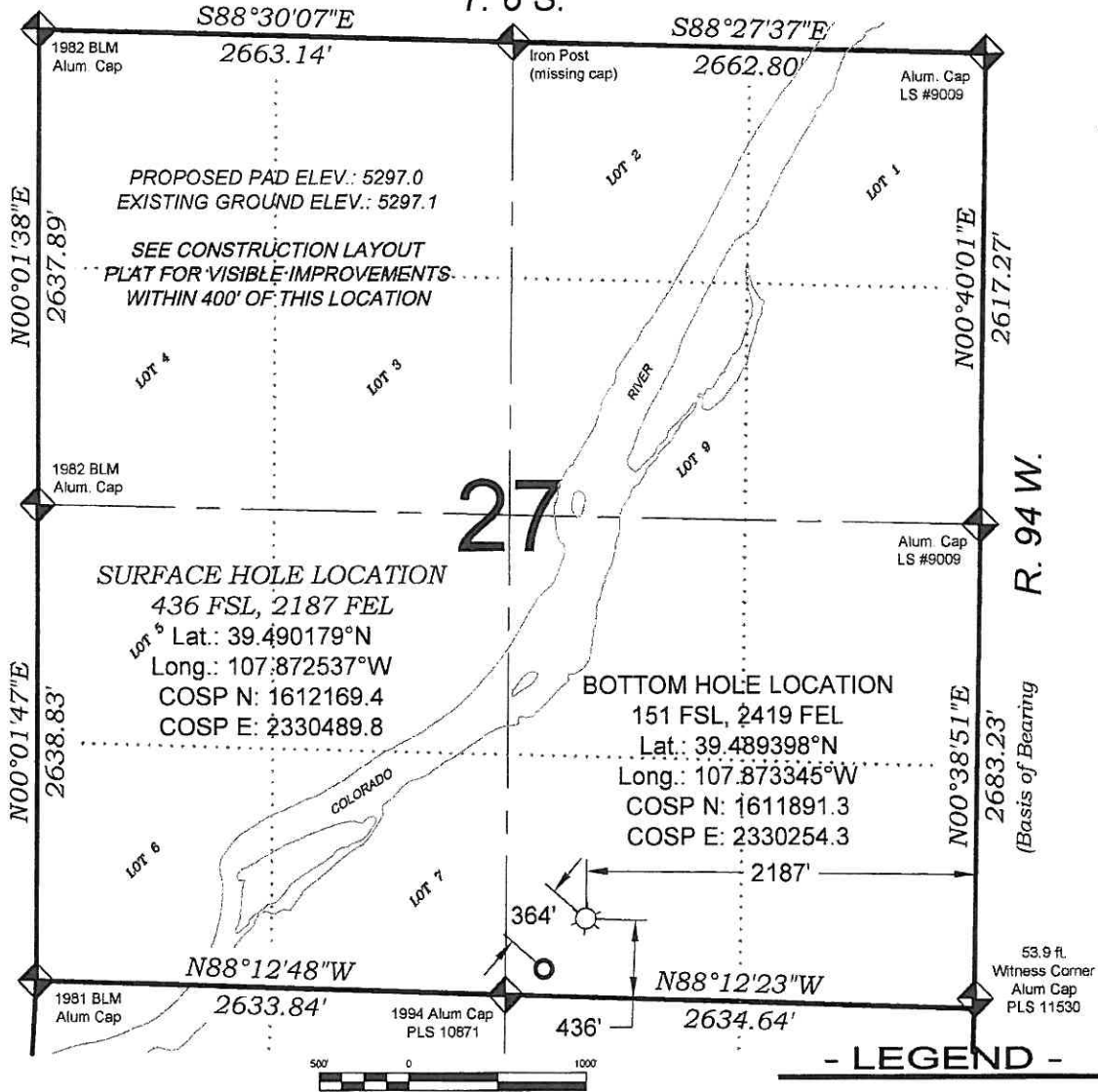


SAVAGE RWF 434-27

T. 6 S.



- LEGEND -

- FIELD LOCATED SECTION MONUMENTS AS DESCRIBED
- FIELD SURVEYED WELL LOCATION
- CALCULATED BOTTOM HOLE LOCATION
- CALCULATED SECTION CORNER LOCATION

SURVEYORS STATEMENT

I, MICHAEL J. LANGHORNE, A REGISTERED LAND SURVEYOR IN THE STATE OF COLORADO DO HEREBY CERTIFY THAT THE SURVEY SHOWN HEREON WAS PREPARED UNDER MY DIRECT SUPERVISION AND HAS BEEN STAKED ON THE GROUND AS SHOWN ON THE PLAT AND CHECKING THAT THIS MAP IS A TRUE REPRESENTATION THEREOF.

Michael J. Langhorne

MICHAEL J. LANGHORNE, COLORADO REGISTRATION NO. 36572
FOR AND ON BEHALF OF
BOOKCLIFF SURVEY SERVICES, INC.

NOTES

- 1) ELEVATIONS BASED ON N.A.V.D. 1988 PUBLISHED COORDINATES.
- 2) LATITUDES AND LONGITUDES ARE BASE ON NAD 83, PUBLISHED COORDINATES
- 3) STATE PLANE COORDINATES ARE BASED ON COLORADO CENTRAL ZONE, U.S. SURVEY FEET.
- 4) ELEVATION MASK SET TO 15"
- 5) GPS OPERATOR J. KIRKPATRICK, OBSERVED A PDOP 1.5 ON SURVEY POINT NUMBER 66065.
- 6) SURFACE AND BOTTOM HOLE LOCATIONS ARE MEASURED 90° FROM SECTION LINES.

REFERENCES

- 1) DEPENDENT RESURVEY AND SURVEY OF TRACT 38 T. 6 S., R. 94 W., 6th P.M (GLO PLAT)
- 2) U.S.G.S. QUAD: RULISON, CO.; NORTH MAMM PEAK, CO

REVISED: 6/4/10

SURVEY DATE:	11/6/08
MAP DATE:	6/4/10
SCALE:	1" = 1000'
PLAT:	1 of 9
PROJECT:	Williams

WELL LOCATION PLAT Prepared for:

Williams. Williams Production, RMT

SW1/4 SE1/4, SECTION 27
T. 6 S., R. 94 W. of the 6th. P.M.
GARFIELD COUNTY, COLORADO

155 East Grand Street
Hugo, Colorado 81650
Ph: (970) 625-1350
Fax: (970) 625-2772

