

# SAVAGE RWF 322-34

PROPOSED PAD ELEV.: 5297.0  
EXISTING GROUND ELEV.: 5297.1

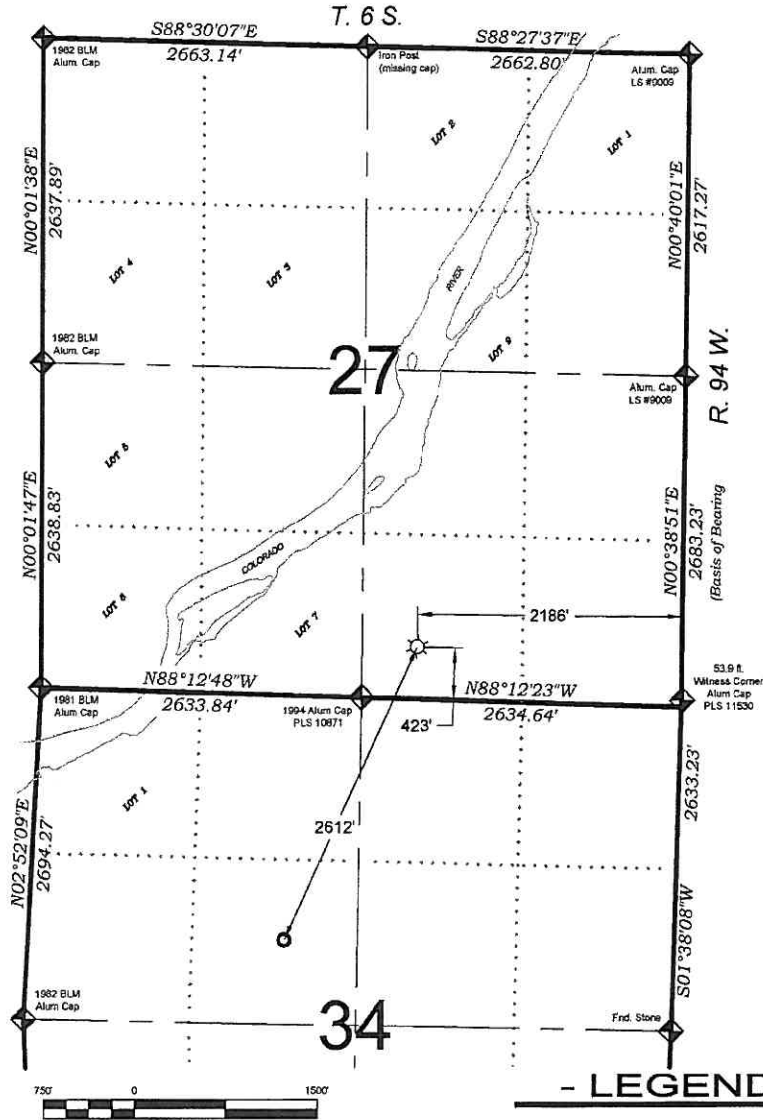
## SURFACE HOLE LOCATION

423 FSL, 2186 FEL  
Lat.: 39.490145°N  
Long.: 107.872533°W  
COSP N: 1612157.0  
COSP E: 2330490.4

## BOTTOM HOLE LOCATION

1988 FNL, 2106 FWL  
Lat.: 39.483539°N  
Long.: 107.876137°W  
COSP N: 1609778.4  
COSP E: 2329410.8

SEE CONSTRUCTION LAYOUT  
PLAT FOR VISIBLE IMPROVEMENTS  
WITHIN 400' OF THIS LOCATION



## - LEGEND -

FIELD LOCATED SECTION  
MONUMENTS AS DESCRIBED

FIELD SURVEYED  
WELL LOCATION

CALCULATED BOTTOM  
HOLE LOCATION

CALCULATED SECTION  
CORNER LOCATION

## SURVEYORS STATEMENT

I, MICHAEL J. LANGHORNE, A REGISTERED LAND SURVEYOR IN THE STATE OF COLORADO DO HEREBY CERTIFY THAT THE SURVEY SHOWN HEREON WAS PREPARED UNDER MY DIRECT SUPERVISION AND HAS BEEN STAKED ON THE GROUND AS SHOWN ON THE PLAT AND CHECKING THAT THIS MAP IS A TRUE REPRESENTATION THEREOF.

*Michael J. Langhorne*

MICHAEL J. LANGHORNE, COLORADO REGISTRATION NO. 36572  
FOR AND ON BEHALF OF

BOOKCLIFF SURVEY SERVICES, INC.

## REFERENCES

- 1) DEPENDENT RESURVEY AND SURVEY OF TRACT 38 T. 6 S., R. 94 W., 6th P.M. (GLO PLAT)
- 2) U.S.G.S. QUAD: RULISON, CO; NORTH MAMM PEAK, CO

REVISED: 6/4/10

## NOTES

- 1) ELEVATIONS BASED ON N.A.V.D. 1988 PUBLISHED COORDINATES.
- 2) LATITUDES AND LONGITUDES ARE BASE ON NAD 83, PUBLISHED COORDINATES
- 3) STATE PLANE COORDINATES ARE BASED ON COLORADO CENTRAL ZONE, U.S. SURVEY FEET.
- 4) ELEVATION MASK SET TO 15"
- 5) GPS OPERATOR J. KIRKPATRICK, OBSERVED A PDOP 1.5 ON SURVEY POINT NUMBER 66065.
- 6) SURFACE AND BOTTOM HOLE LOCATIONS ARE MEASURED 90° FROM SECTION LINES.

WELL LOCATION PLAT Prepared for:  
**Williams. Williams Production, RMT**

SW1/4 SE1/4, SECTION 27  
T. 6 S., R. 94 W. of the 6th P.M.  
GARFIELD COUNTY, COLORADO

Let East Third Street  
Rifle, Colorado 81650  
Ph: (970) 625-1334  
Fax: (970) 625-2773

**BOOKCLIFF**  
Survey Services, Inc.

SURVEY DATE: 11/6/08  
MAP DATE: 6/4/10  
SCALE: 1" = 1500'  
PLAT: 1 of 9  
PROJECT: Williams