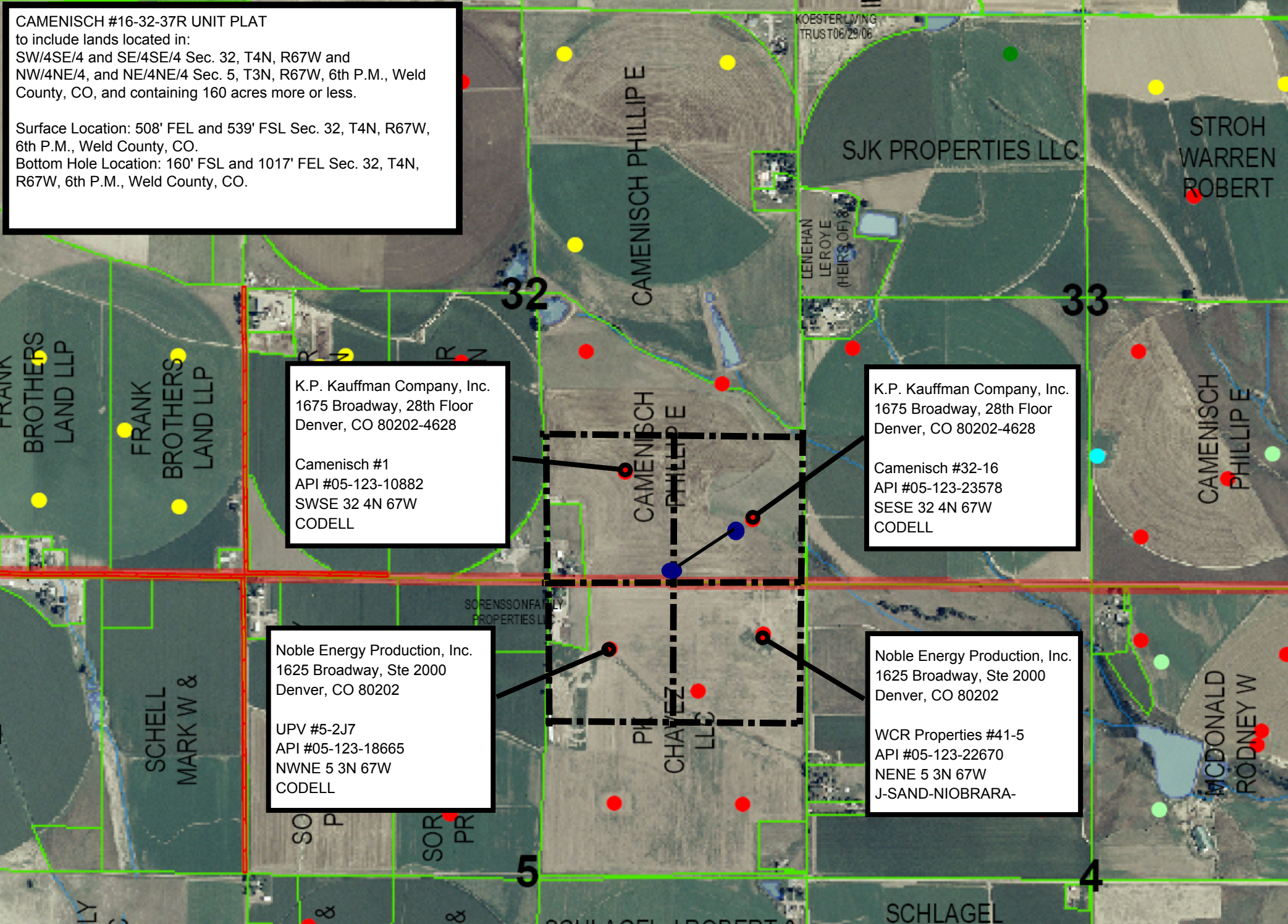


CAMENISCH #16-32-37R UNIT PLAT  
to include lands located in:  
SW/4SE/4 and SE/4SE/4 Sec. 32, T4N, R67W and  
NW/4NE/4, and NE/4NE/4 Sec. 5, T3N, R67W, 6th P.M., Weld  
County, CO, and containing 160 acres more or less.

Surface Location: 508' FEL and 539' FSL Sec. 32, T4N, R67W,  
6th P.M., Weld County, CO.  
Bottom Hole Location: 160' FSL and 1017' FEL Sec. 32, T4N,  
R67W, 6th P.M., Weld County, CO.



K.P. Kauffman Company, Inc.  
1675 Broadway, 28th Floor  
Denver, CO 80202-4628

Camenisch #1  
API #05-123-10882  
SWSE 32 4N 67W  
CODELL

K.P. Kauffman Company, Inc.  
1675 Broadway, 28th Floor  
Denver, CO 80202-4628

Camenisch #32-16  
API #05-123-23578  
SESE 32 4N 67W  
CODELL

Noble Energy Production, Inc.  
1625 Broadway, Ste 2000  
Denver, CO 80202

UPV #5-2J7  
API #05-123-18665  
NWNE 5 3N 67W  
CODELL

Noble Energy Production, Inc.  
1625 Broadway, Ste 2000  
Denver, CO 80202

WCR Properties #41-5  
API #05-123-22670  
NENE 5 3N 67W  
J-SAND-NIOBRARA-