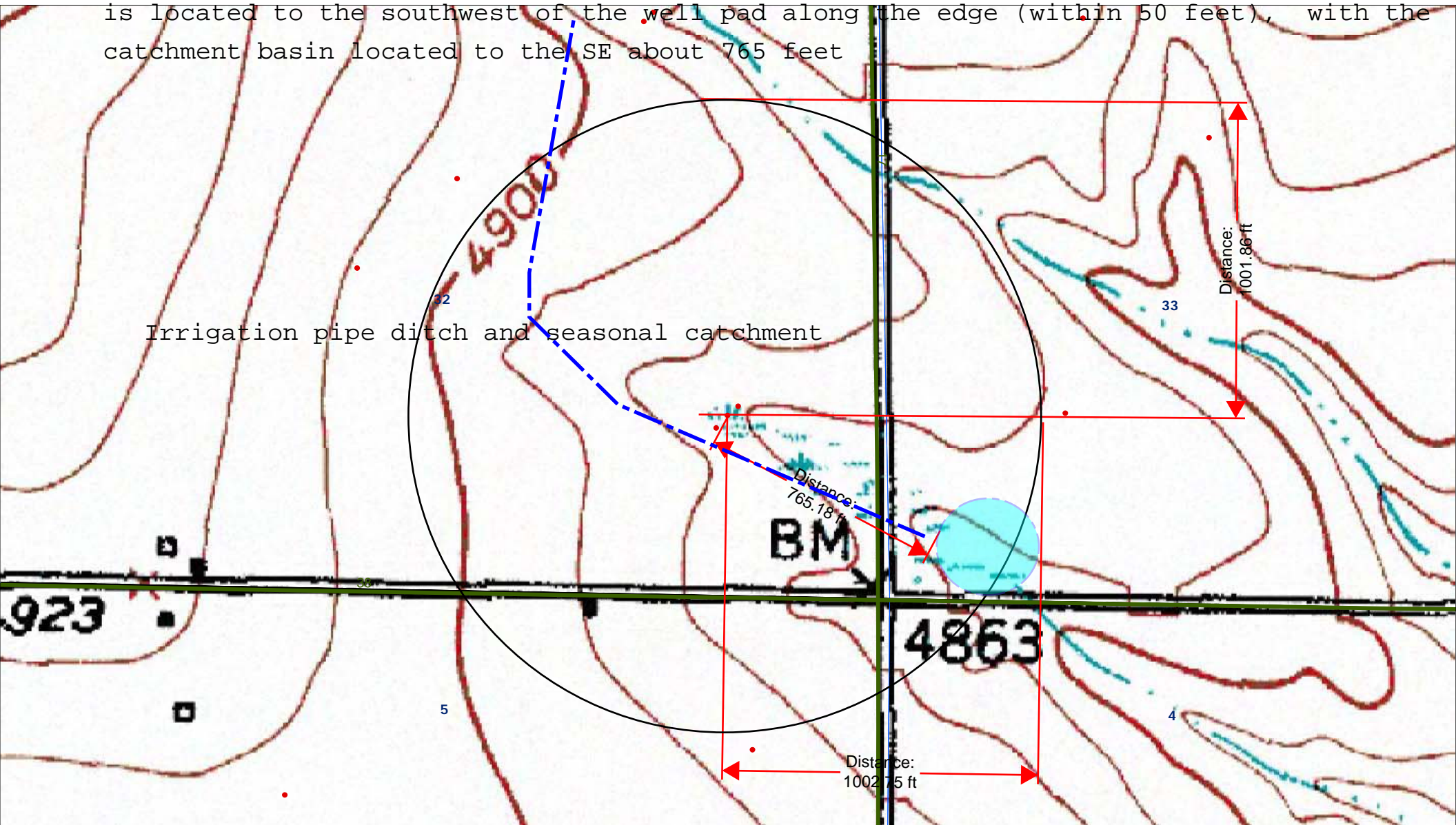
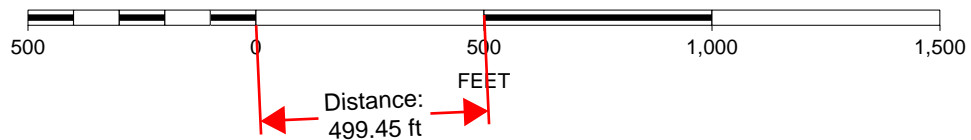


The well pad appears to be within an irrigation pipe ditch, but in actuality, the ditch is located to the southwest of the well pad along the edge (within 50 feet), with the catchment basin located to the SE about 765 feet



SCALE 1 : 5,050



K. P. Kauffman Company, Inc.

Hydrology map; surface waters and water wells

Camenisch #32-16 well pad

SESE section 32-T4N-R67W

Weld Co., Colorado

