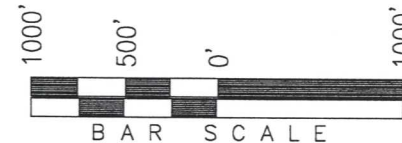


T2S, R97W, 6th P.M.

Exxon Mobil Corporation

WELL LOCATION, FREEDOM UNIT 297-28B7,
LOCATED AS SHOWN IN THE SW 1/4 NE 1/4
OF SECTION 28, T2S, R97W, 6th P.M., RIO
BLANCO COUNTY, COLORADO.



◆ = SECTION CORNERS LOCATED

BASIS OF BEARINGS & BASIS OF ELEVATION

BASIS OF BEARINGS IS A LINE BETWEEN MAGNOLIA & MEYERS TRIANGULATION
STATION GRID COORDINATES WHICH IS ASSUMED TO BEAR S82°36'07"E.

BASIS OF ELEVATION IS MAGNOLIA TRIANGULATION STATION LOCATED IN THE
NW 1/4 OF SECTION 9, T2S, R96W, 6th P.M. REPORTED FROM THE NATIONAL
GEODETIC SURVEY (NAVD 88). ELEVATION IS REPORTED AS BEING 7529 FEET.

NOTES:

1. Well footages are measured at right angles to the Section Lines.
2. Bearings are based on Global Positioning Satellite observations.
3. G.P.S. Operator: C. MILLER, (PDOP) = 1.7

THIS IS TO CERTIFY THAT THE ABOVE WAS PREPARED
FROM FIELD NOTES OF ACTUAL SURVEY MADE BY ME, OR
UNDER MY SUPERVISION AND THAT THE SAME ARE TRUE
AND CORRECT TO THE BEST OF MY KNOWLEDGE AND BELIEF.

30125

REGISTERED LAND SURVEYOR
REGISTRATION NO. 30125
STATE OF COLORADO

TRI STATE LAND SURVEYING & CONSULTING

180 NORTH VERNAL AVE. - VERNAL, UTAH 84078
(435) 781-2501

DATE SURVEYED:
12-10-05

SURVEYED BY: C.M.

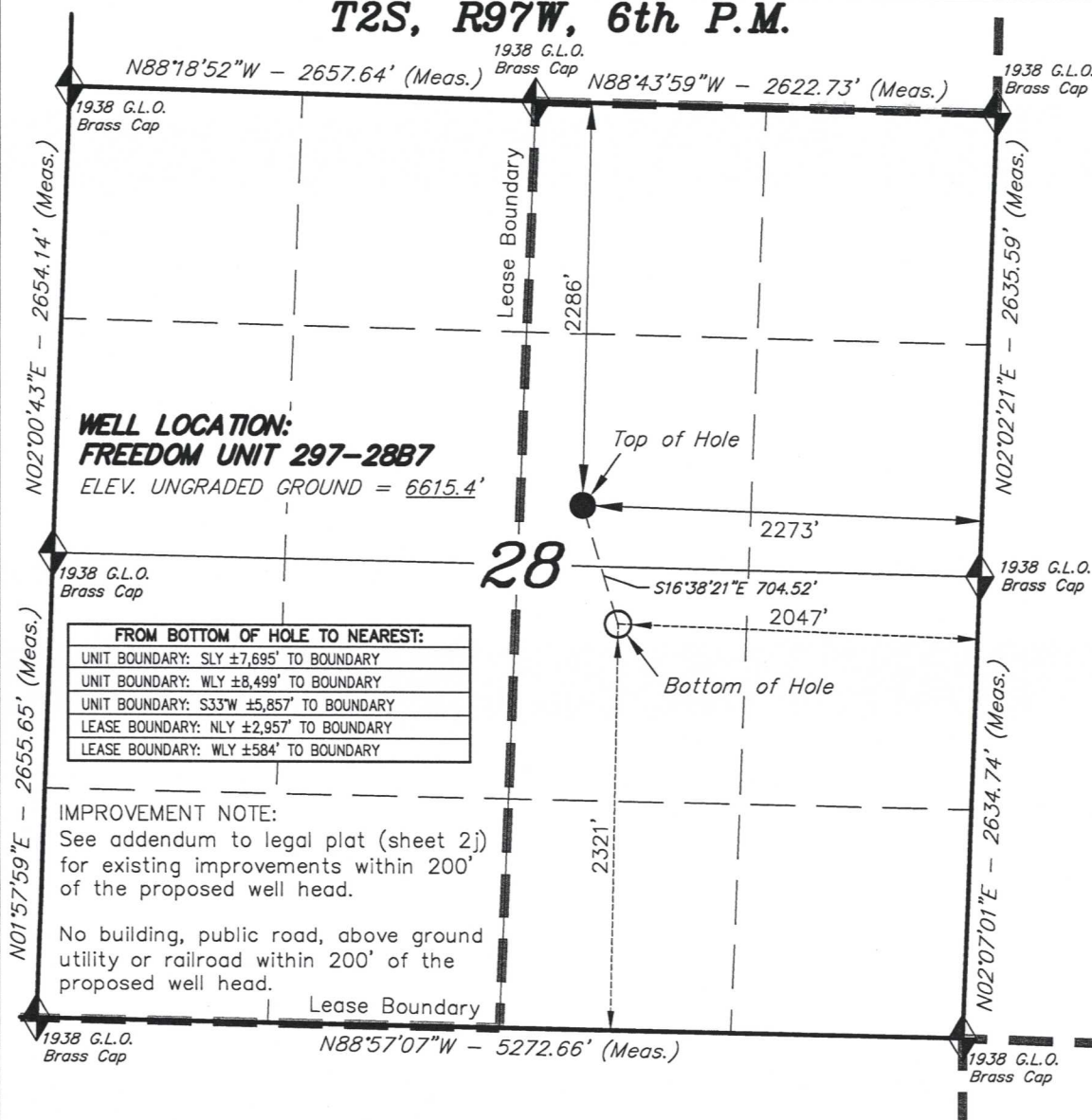
DATE DRAWN:
02-20-06

DRAWN BY: D.COX

REVISED:
3-29-06 R.V.C.

SCALE: 1" = 1000'

SHEET
1g
OF 8



WELL LOCATION: FREEDOM UNIT 297-28B7

ELEV. UNGRADED GROUND = 6615.4'

FROM BOTTOM OF HOLE TO NEAREST:

UNIT BOUNDARY: SLY ±7,695' TO BOUNDARY
UNIT BOUNDARY: WLY ±8,499' TO BOUNDARY
UNIT BOUNDARY: S33°W ±5,857' TO BOUNDARY
LEASE BOUNDARY: NLY ±2,957' TO BOUNDARY
LEASE BOUNDARY: WLY ±584' TO BOUNDARY

IMPROVEMENT NOTE:

See addendum to legal plat (sheet 2)
for existing improvements within 200'
of the proposed well head.

No building, public road, above ground
utility or railroad within 200' of the
proposed well head.

CO-NORTH NAD 83 (SURFACE LOCATION)	CO-NORTH NAD 83 (BOTTOM HOLE)	FROM SURFACE LOCATION TO NEAREST:
LATITUDE = 39°50'54.38" (39.848438)	LATITUDE = 39°50'47.77" (39.846604)	TOWN/COMMUNITY: NE 20.2 MILES TO MEEKER
LONGITUDE = 108°17'08.55" (108.285708)	LONGITUDE = 108°17'05.69" (108.284914)	UNIT BOUNDARY: SLY ±8,362' TO BOUNDARY
STATE PLANE COORDINATES	STATE PLANE COORDINATES	UNIT BOUNDARY: WLY ±8,275' TO BOUNDARY
N: = 1199921.707 E: = 2217968.224	N: = 1199246.924 E: = 2218169.888	UNIT BOUNDARY: S28°W ±6,339' TO BOUNDARY
CO-NORTH NAD 27 (SURFACE LOCATION)	CO-NORTH NAD 27 (BOTTOM HOLE)	LEASE BOUNDARY: NLY ±2,286' TO BOUNDARY
LATITUDE = 39°50'54.47" (39.848465)	LATITUDE = 39°50'47.87" (39.846631)	LEASE BOUNDARY: WLY ±356' TO BOUNDARY
LONGITUDE = 108°17'06.24" (108.285065)	LONGITUDE = 108°17'03.38" (108.284272)	EXISTING WELL: SELY ±4,461' TO 1 JOHNSON
STATE PLANE COORDINATES	STATE PLANE COORDINATES	
N: = 199922.776 E: = 1218128.335	N: = 199248.000 E: = 1218330.000	