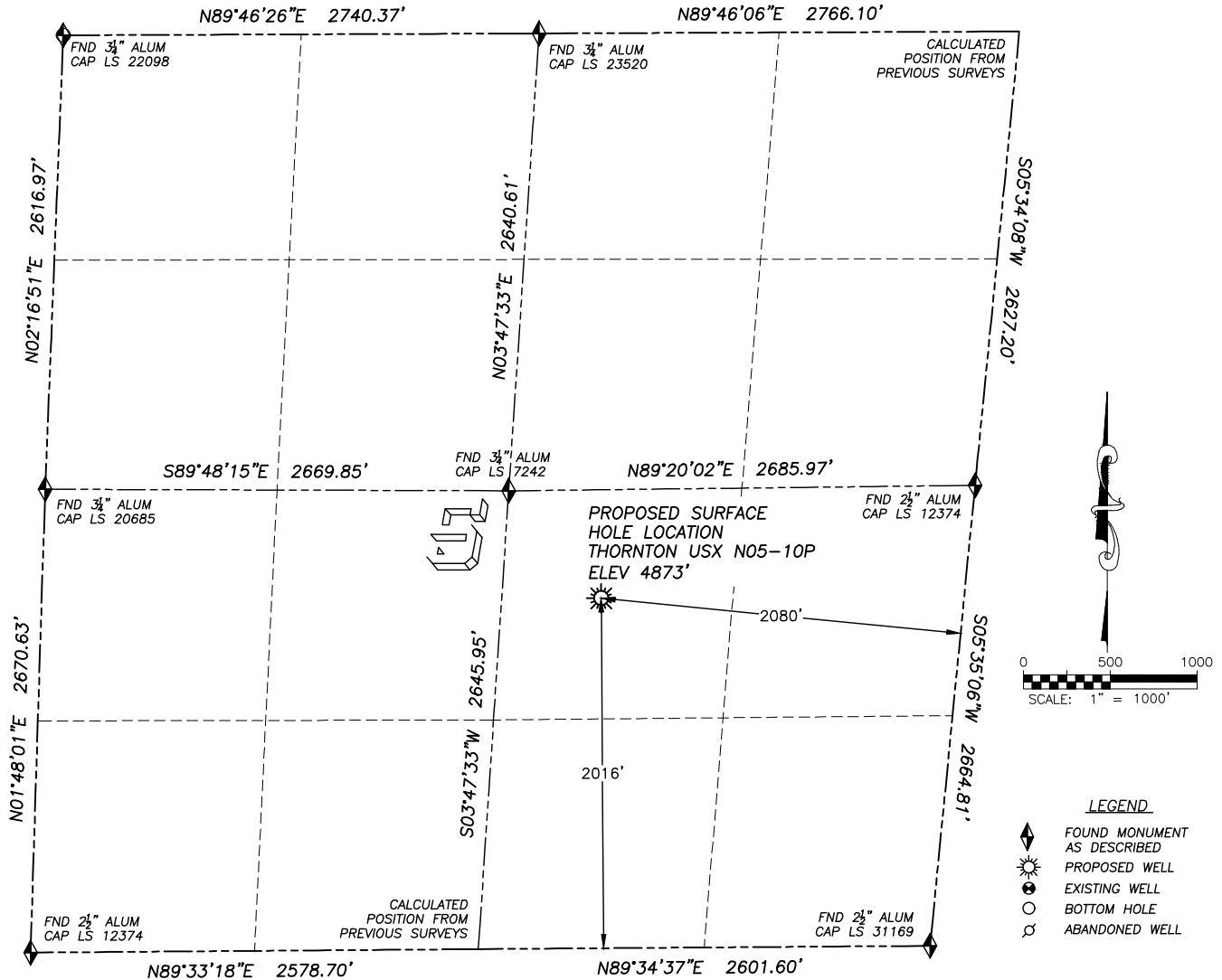


WELL LOCATION CERTIFICATE

THORNTON USX N05-10P

SECTION 5, TOWNSHIP 5 NORTH, RANGE 67 WEST OF THE 6TH PRINCIPAL MERIDIAN

**NAD 83 LATITUDE AND LONGITUDE****THORNTON USX N05-10P****SURFACE HOLE:**

LATITUDE: N40.42707°
 LONGITUDE: W104.91394°
 ELEVATION: 4873'
 PDOP 1.8
 2016' FSL, 2080' FWL

NEAREST EXISTING WELL:

FRANK 5-5D SURFACE HOLE
 LATITUDE: N40.42927°
 LONGITUDE: W104.91679°
 ELEVATION: 4882'
 1129' NORTHWEST

QUARTER/QUARTER: NW4/SE4

NEAREST APPARENT PROPERTY LINE:
 570'± EAST

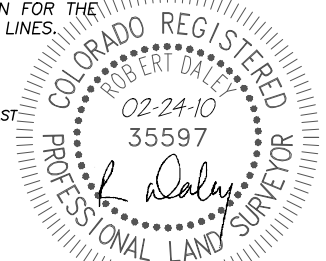
IN ACCORDANCE WITH A REQUEST FROM MATT CAMPBELL OF NOBLE ENERGY INC., DALEY LAND SURVEYING, INC. HAS DETERMINED THE SURFACE LOCATION OF THE THORNTON USX N05-10P WELL TO BE 2016' FSL, 2080' FWL, AS MEASURED AT NINETY (90) DEGREES FROM THE SECTION LINES OF SECTION 5, TOWNSHIP 5 NORTH, RANGE 67 WEST OF THE 6TH PRINCIPAL MERIDIAN, WELD COUNTY COLORADO.

I HEREBY CERTIFY THAT THIS WELL LOCATION CERTIFICATE WAS PREPARED BY ME OR UNDER MY DIRECT SUPERVISION, THAT THE WORK WAS COMPLETED ON 2/23/2010 FOR AND ON BEHALF OF NOBLE ENERGY, INC., AND THAT THIS MAP DOES NOT REPRESENT A BOUNDARY SURVEY, IT IS NOT A LAND SURVEY PLAT OR AN IMPROVEMENT SURVEY PLAT AND IT IS NOT TO BE RELIED UPON FOR THE ESTABLISHMENT OF FENCE, BUILDING OR OTHER FUTURE IMPROVEMENT LINES.

NOTES:

- 1) BASIS OF BEARING FOR THIS MAP IS ASSUMED AND BASED UPON GPS OBSERVATIONS MADE BETWEEN MONUMENTS LOCATED AT THE SOUTHEAST AND EAST QUARTER CORNERS OF SECTION 5, T.5N., R.67W., AND ALL BEARINGS SHOWN HERON ARE RELATIVE THERETO.
- 2) HORIZONTAL DATUM IS NAD83.
- 3) VERTICAL DATUM IS NAVD88. ELEVATIONS ARE DERIVED FROM GPS-RTK OBSERVATIONS PROCESSED THROUGH OPUS, UTILIZING THE GEIOD03 MODEL.
- 4) SEE VISIBLE IMPROVEMENTS EXHIBIT FOR VISIBLE IMPROVEMENTS WITHIN 600' OF PROPOSED SURFACE HOLE LOCATION
- 5) SURFACE USE: AGRICULTURAL

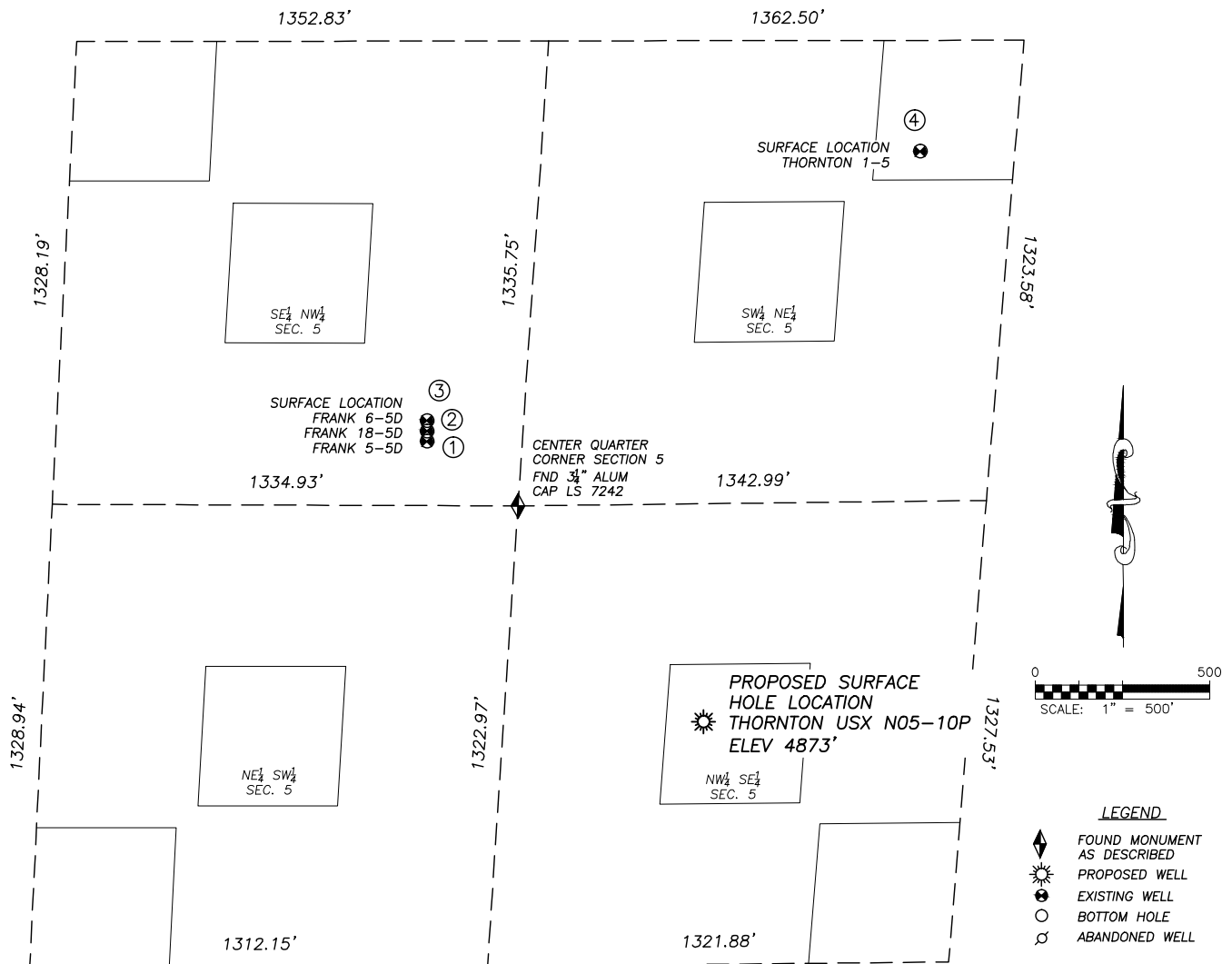
NOTICE: According to Colorado law you MUST commence any legal action based upon any defect in this W.L.C. within three years after you first discover such defect. In no event may any action based upon any such defect in this W.L.C. be commenced more than ten years from the date of the certification shown heron.



FOR AND ON BEHALF OF
 DALEY LAND SURVEYING INC.,
 Robert Daley, PLS 35597

SITE SKETCH THORNTON USX N05-10P

SECTION 5, TOWNSHIP 5 NORTH, RANGE 67 WEST OF THE 6TH PRINCIPAL MERIDIAN



①
FRANK 5-5D
SE/NW SEC. 5
2448' FNL, 2400' FWL
1129' NW OF PROPOSED
SURFACE HOLE LOCATION
LAT. N40.42927°
LONG. W104.91679°
EL: 4882'
PDOP 1.2

②
FRANK 18-5D
SE/NW SEC. 5
2419' FNL, 2399' FWL
1150' NW OF PROPOSED
SURFACE HOLE LOCATION
LAT. N40.42935°
LONG. W104.91679°
EL: 4882'
PDOP 1.9

③
FRANK 6-5D
SE/NW SEC. 5
2389' FNL, 2397' FWL
1172' NW OF PROPOSED
SURFACE HOLE LOCATION
LAT. N40.42943°
LONG. W104.91679°
EL: 4882'
PDOP 1.5

④
THORNTON 1-5
SW/NE SEC. 5
1623' FNL, 1621' FEL
1749' NE OF PROPOSED
SURFACE HOLE LOCATION
LAT. N40.43155°
LONG. W104.91171°
EL: 4879'
PDOP 1.5

NOTES:

- 1) THIS DOES NOT REPRESENT A BOUNDARY SURVEY
- 2) THE LATITUDES AND LONGITUDES SHOWN ARE REFERENCED TO NAD83
- 3) DATUM FOR ELEVATION IS NAVD88. ELEVATIONS ARE DERIVED FROM GPS-RTK OBSERVATIONS PROCESSED THROUGH OPUS, UTILIZING THE GEOID03 MODEL.