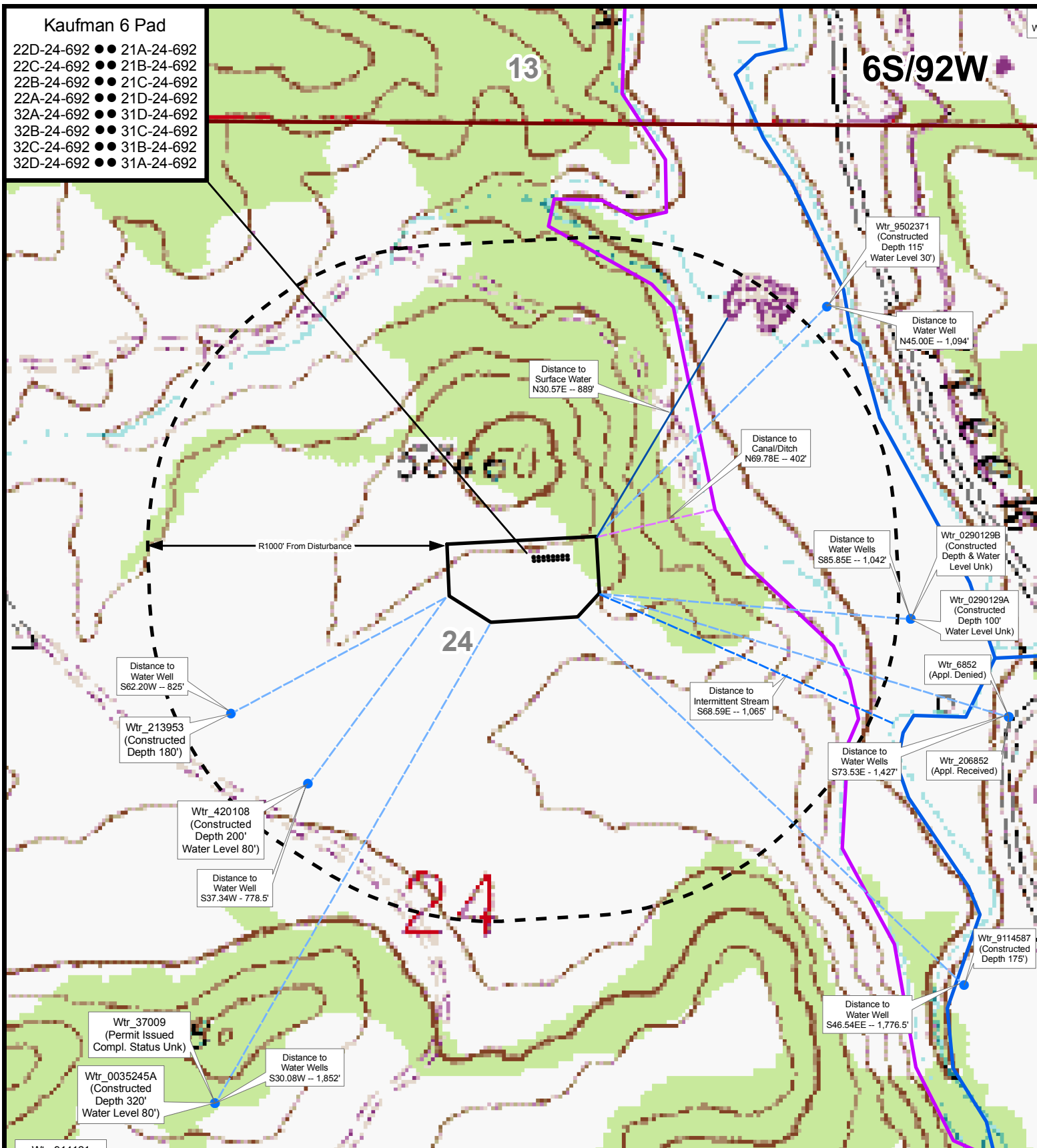


Kaufman 6 Pad

22D-24-692 ●● 21A-24-692
 22C-24-692 ●● 21B-24-692
 22B-24-692 ●● 21C-24-692
 22A-24-692 ●● 21D-24-692
 32A-24-692 ●● 31D-24-692
 32B-24-692 ●● 31C-24-692
 32C-24-692 ●● 31B-24-692
 32D-24-692 ●● 31A-24-692

13

6S/92W



Hydrology Map

Kaufman 6 Pad
 NWNE, Section 24, T6S R92W
 Garfield County, Colorado



0 125 250 500
 Feet

Wells

- Water Wells
- Proposed O&G SH Location



- 1000' Buffer
- Stream / River
- Canal / Ditch

6/24/2010