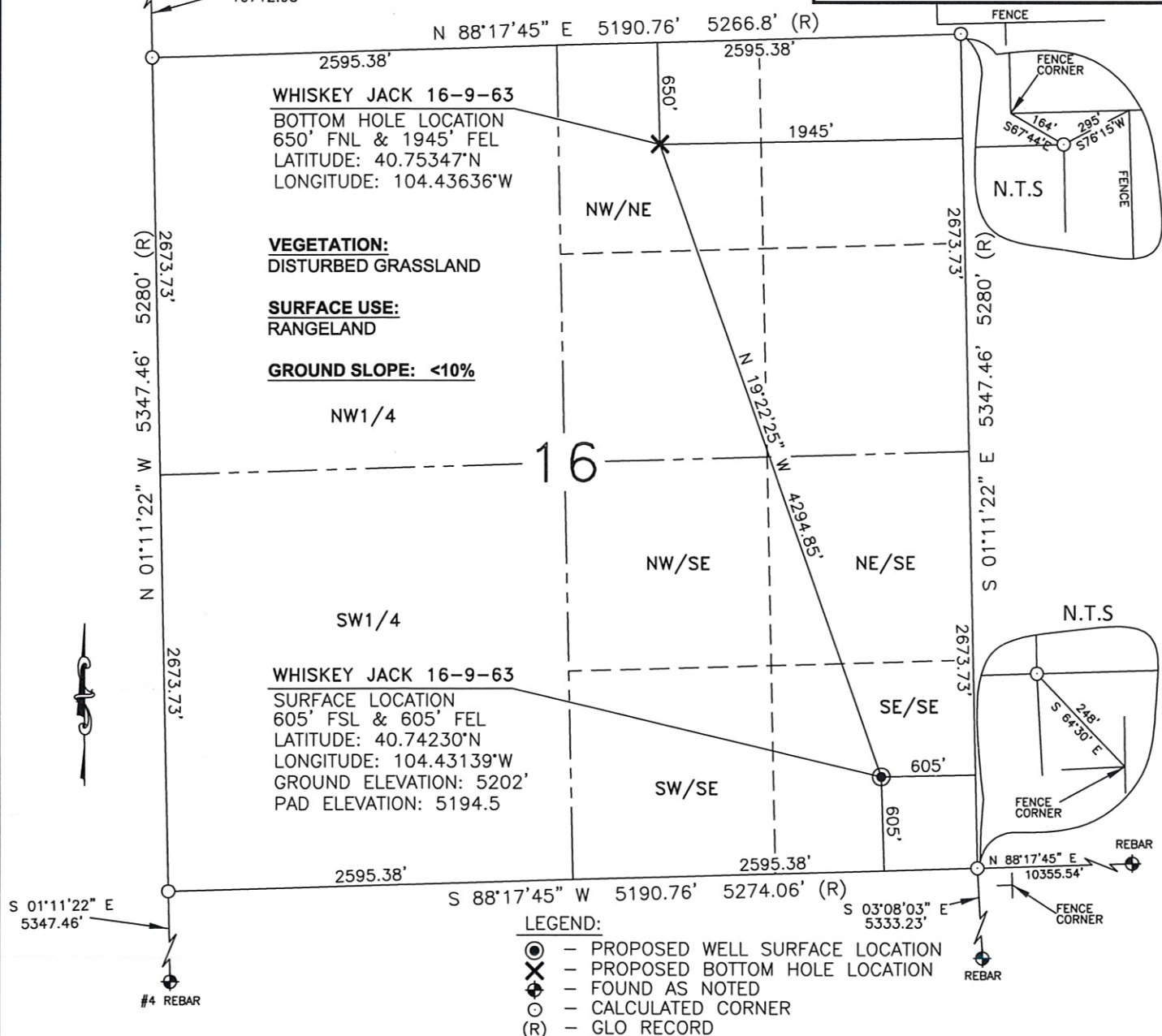


ALUM CAP  
PLS 17848

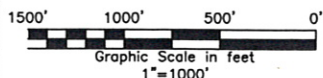
N 01°11'22" W  
10712.98'

# WELL LOCATION MAP

WHISKEY JACK 16-9-63



I, JASON D. LEVANEN, A DULY REGISTERED LAND SURVEYOR IN THE STATE OF COLORADO, DO HEREBY CERTIFY THAT THIS PLAT WAS PREPARED FROM NOTES TAKEN DURING A SURVEY PERFORMED BY ME OR UNDER MY SUPERVISION ON MAY 26, 2010.



WESTERN LAND SERVICES

Sheridan, WY 82801 (307)673-1817

DP: L:\Slawson\Well Plats\Well\_Plats.dwg

Date: 6-24-10

SLAWSON EXPLORATION  
COMPANY, INC.  
WHISKEY JACK 16-9-63

SL: SE1/4SE1/4, S.16, T9N-R63W  
BL: NW1/4NE1/4, S.16, T9N-R63W  
6TH P.M., WELD COUNTY, COLORADO