

Well Location Plat

ROBERT L. BAYLESS, PRODUCER LLC
WEAVER RIDGE #13-9H
2075' FSL & 879' FEL
Sec. 13, T1S, R104W, 6th PM
Rio Blanco Co., CO
Ground Elev. 5858.3 (NAVD 88)

Lat. 39.95965° N
Long. 109.01081° W (NAD 83)

Field Completion Date: 27 May 2010
Plat Date: 12 June 2010

Non-crop Pasture
Existing Well Facilities

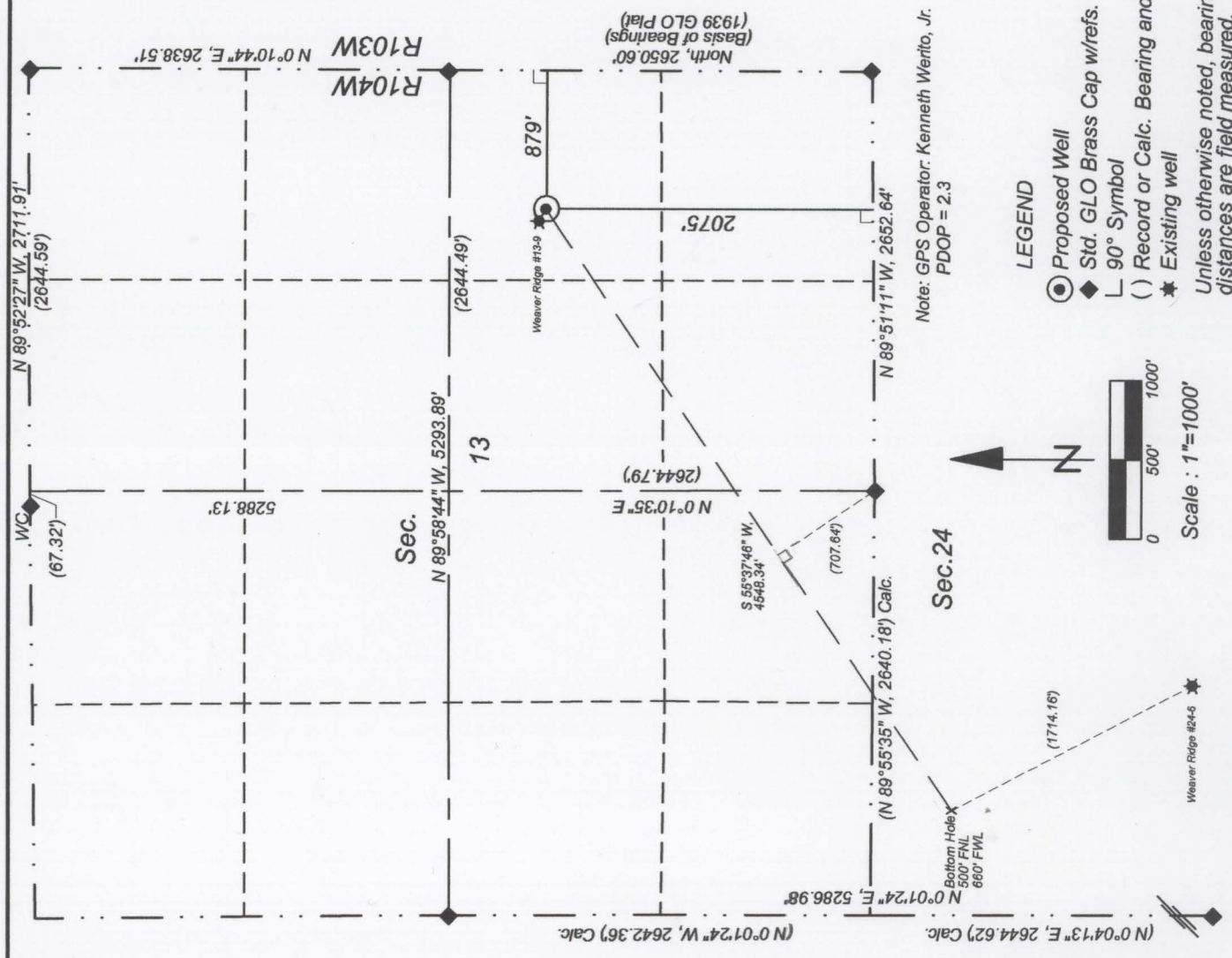
This is to certify that this plat was prepared from field notes of actual surveys made by me, or under my supervision, and that the same are true and correct to the best of my knowledge and belief.

Richard B. Gabriel
Colorado PLS No. 37929

Date



ENERGY SURVEYORS, INC.
P.O. BOX 991
FARMINGTON, NM 87499
FAX: 801-659-4246
OFFICE: 505-325-4005
CELL: 505-360-8142

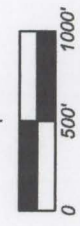


Note: GPS Operator: Kenneth Weritto, Jr.
PDOP = 2.3

LEGEND

- Proposed Well
- Std. GLO Brass Cap w/refs.
- 90° Symbol
- Record or Calc. Bearing and Dist.
- Existing well

Unless otherwise noted, bearings and distances are field measured.



Scale: 1"=1000'