

T4S, R96W, 6th P.M.

EnCana OIL & GAS (USA) INC.

1953 Brass Cap,
0.8' High, Mound
of Stones
Lat: 39.666042°
Long: 108.126567°

1953 Brass Cap,
0.6' High, Steel Post
Lat: 39.666053°
Long: 108.117142°

1953 Brass Cap,
0.4' High, Steel Post
Lat: 39.666064°
Long: 108.107683°

Well location, SGU 8509C-36 B36 496, located
as shown in Lot 2 of Section 36, T4S, R96W,
6th P.M., Garfield County, Colorado.

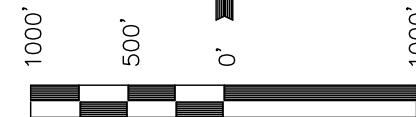
BASIS OF ELEVATION

BENCH MARK (H79) LOCATED IN THE NE 1/4 OF SECTION
35, T4S, R98W, 6th P.M. TAKEN FROM THE BULL FORK
QUADRANGLE, COLORADO, 7.5 MINUTE SERIES (TOPO
GRAPHICAL MAP) PUBLISHED BY THE UNITED STATES
DEPARTMENT OF THE INTERIOR, GEOLOGICAL SURVEY. SAID
ELEVATION IS MARKED AS BEING 8535 FEET.

BASIS OF BEARINGS

BASIS OF BEARINGS IS A G.P.S. OBSERVATION.

Sheet 1y of 11

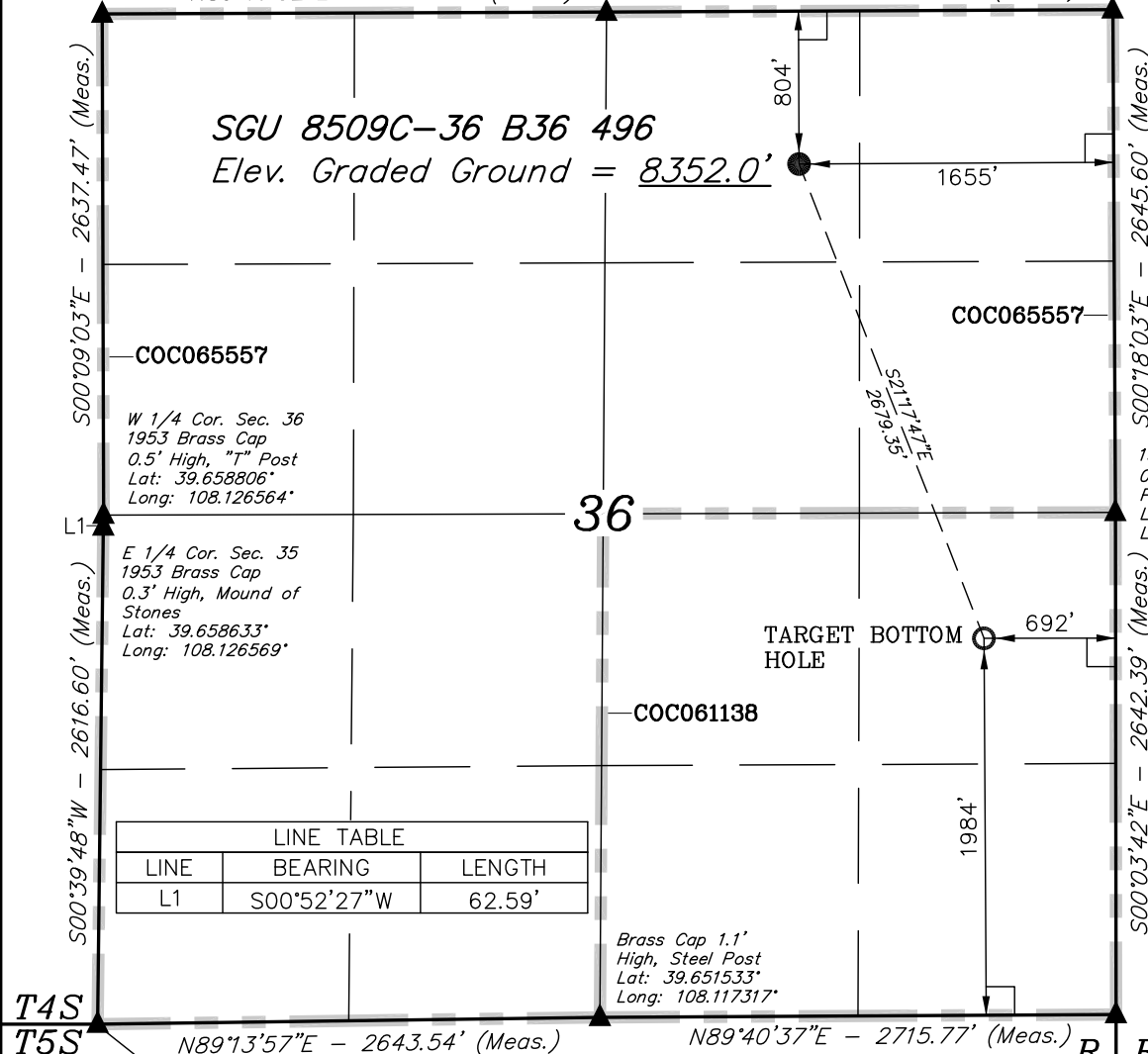


SCALE

CERTIFICATE

THIS IS TO CERTIFY THAT THE ABOVE PLAT WAS PREPARED FROM
FIELD NOTES OF ACTUAL SURVEYS MADE BY ME OR UNDER MY
SUPERVISION AND THAT THE SAME ARE TRUE AND CORRECT TO THE
BEST OF MY KNOWLEDGE AND BELIEF.

REGISTERED LAND SURVEYOR
REGISTRATION NO. 17492
STATE OF COLORADO



T4S
T5S

R
96
W
R
95
W

LEGEND:

- └─┘ = 90° SYMBOL
- = PROPOSED WELL HEAD.
- ▲ = SECTION CORNERS LOCATED.

NOTE:
SEE ADDENDUM PLAT FOR EXISTING
IMPROVEMENT WITHIN 400' OF THE
PROPOSED WELL HEAD.

PDOP = 1.7

NAD 83 (TARGET BOTTOM HOLE)	NAD 83 (SURFACE LOCATION)
LATITUDE = 39°39'25.17" (39.656992)	LATITUDE = 39°39'49.86" (39.663850)
LONGITUDE = 108°06'36.44" (108.110122)	LONGITUDE = 108°06'48.79" (108.113553)
NAD 27 (TARGET BOTTOM HOLE)	NAD 27 (SURFACE LOCATION)
LATITUDE = 39°39'25.26" (39.657017)	LATITUDE = 39°39'49.94" (39.663872)
LONGITUDE = 108°06'34.16" (108.109489)	LONGITUDE = 108°06'46.51" (108.112919)

UINTAH ENGINEERING & LAND SURVEYING

85 SOUTH 200 EAST - VERNAL, UTAH 84078

(435) 789-1017

SCALE 1" = 1000'	DATE SURVEYED: 08-06-09	DATE DRAWN: 03-24-10
PARTY D.K. J.R. D.R.B.	REFERENCES G.L.O. PLAT	
WEATHER COLD	FILE EnCana OIL & GAS (USA) INC.	