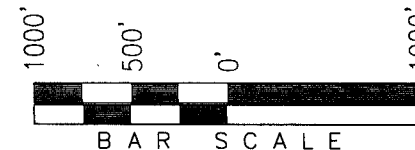


T1S, R97W, 6th P.M.

R 97 W

ExxonMobil Oil Corporation

WELL LOCATION, PICEANCE CREEK UNIT
T25X-25G5, LOCATED AS SHOWN IN THE NW
1/4 SW 1/4 (LOT 12) OF SECTION 25, T1S,
R97W, 6th P.M., RIO BLANCO COUNTY,
COLORADO.



◆ = SECTION CORNERS LOCATED

BASIS OF BEARINGS & BASIS OF ELEVATION

BASIS OF BEARINGS IS A LINE BETWEEN MAGNOLIA & MEYERS TRIANGULATION STATION GRID COORDINATES WHICH IS ASSUMED TO BEAR S82°36'07"E.

BASIS OF ELEVATIONS IS MAGNOLIA TRIANGULATION STATION LOCATED IN THE NW 1/4 OF SECTION 9, T2S, R96W, 6th P.M. REPORTED FROM THE NATIONAL GEODETIC SURVEY AS BEING 7529 FEET (NAVD 88). WE MEASURED IT TO BE 7526.2'

NOTES:

1. Well footages are measured at right angles to the Section Lines.
2. Bearings are based on Global Positioning Satellite observations.
3. G.P.S. Operator: D. PETTY, (PDOP) = 3.4

THIS IS TO CERTIFY THAT THE ABOVE MAP WAS PREPARED FROM FIELD NOTES OF ACTUAL SURVEY MADE BY ME, OR UNDER MY SUPERVISION AND THAT THE SAME ARE TRUE AND CORRECT TO THE BEST OF MY KNOWLEDGE AND BELIEF.

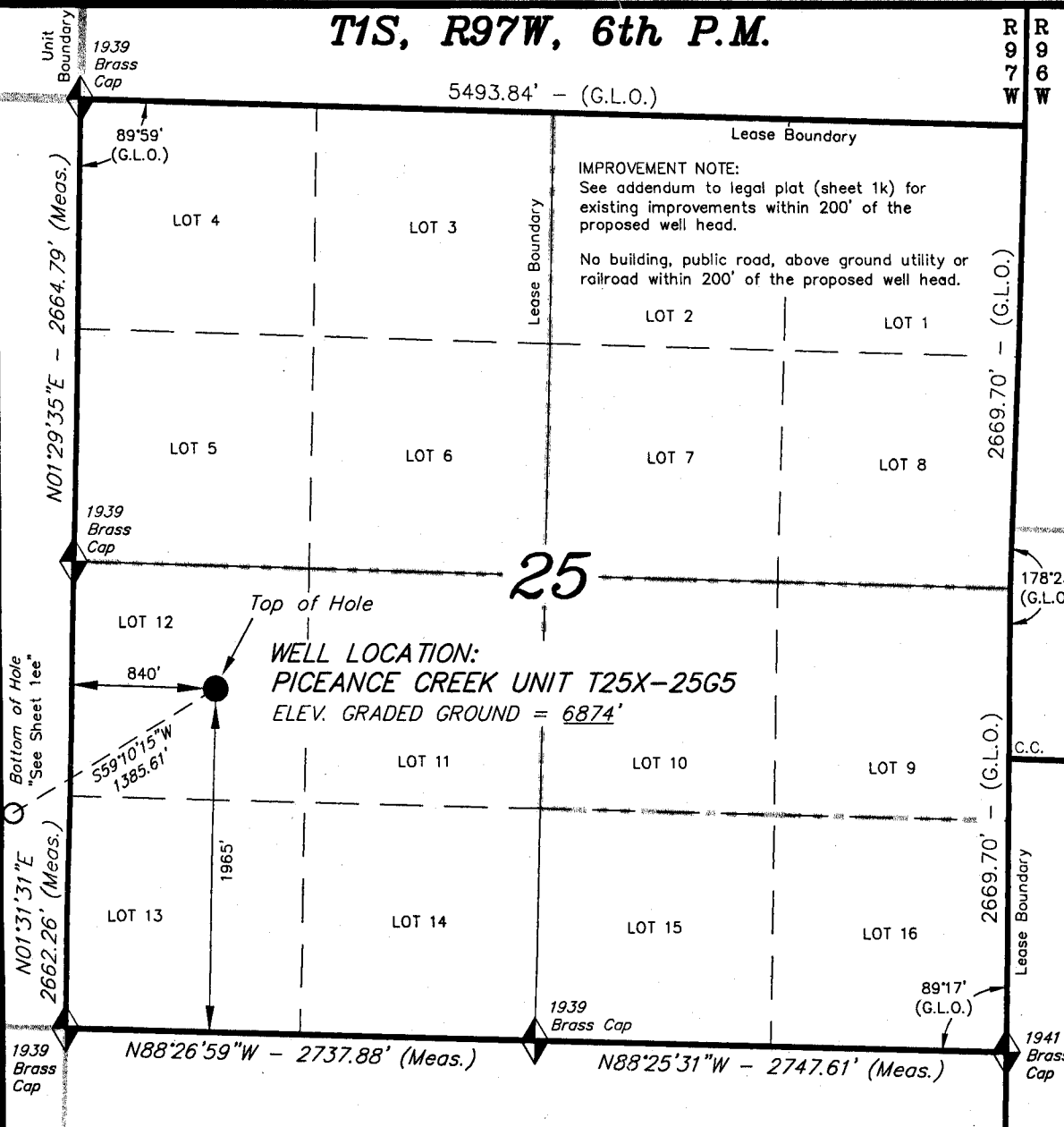
30125

REGISTERED LAND SURVEYOR
REGISTRATION NO. 11892
STATE OF COLORADO

TRI STATE LAND SURVEYING & CONSULTING

180 NORTH VERNAL AVE. - VERNAL, UTAH 84078
(435) 781-2501

DATE SURVEYED: 12-13-06	SURVEYED BY: D.P.	SHEET 1e OF 8
DATE DRAWN: 03-28-07	DRAWN BY: D.COX	
REVISED:	SCALE: 1" = 1000'	

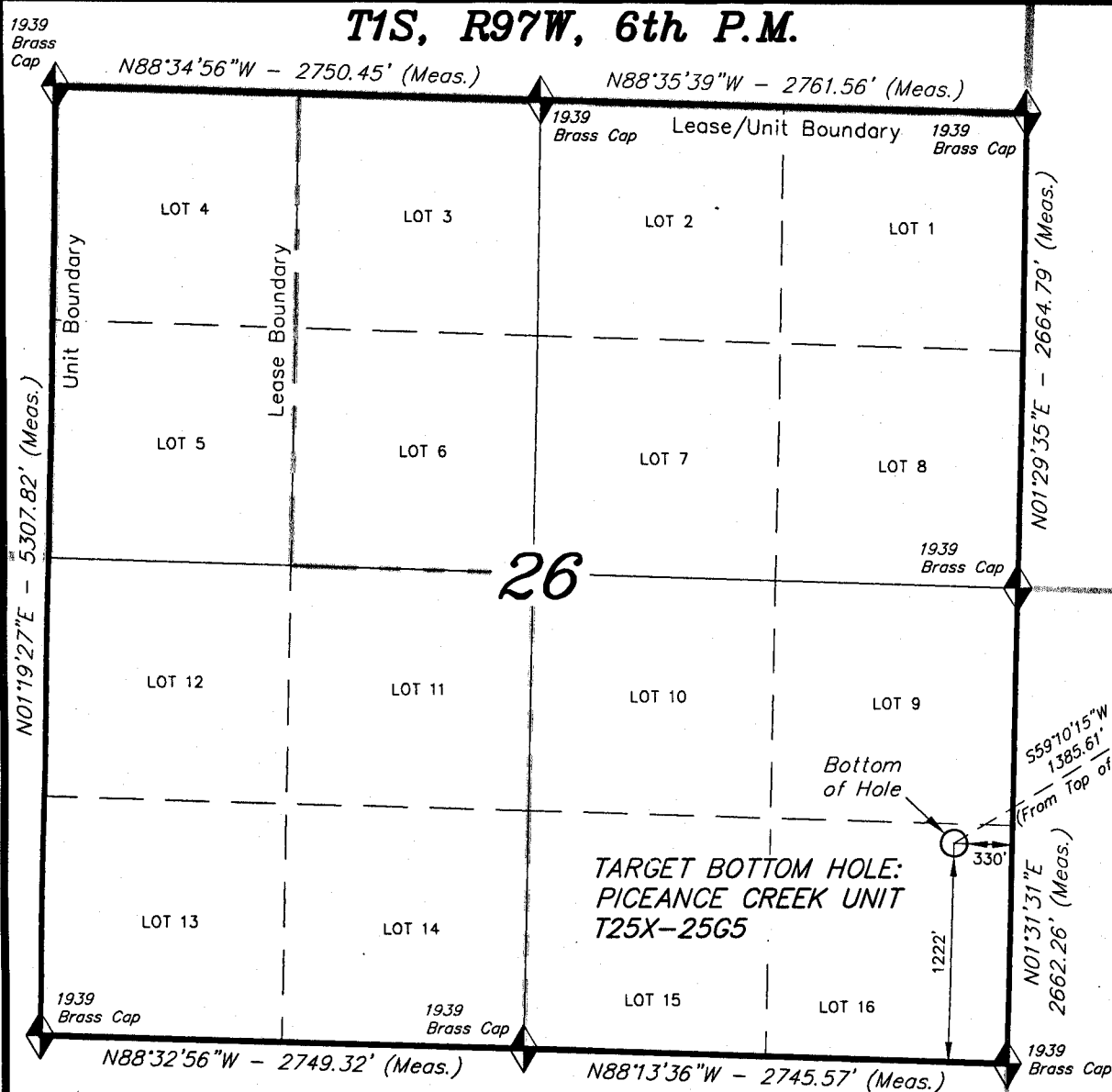


CO-NORTH NAD 83 (SURFACE LOCATION)	
LATITUDE = 39°56'00.61" (39.933504)	
LONGITUDE = 108°14'08.12" (108.235588)	
STATE PLANE COORDINATES	
N: = 1230455.945	E: = 2232989.560
CO-NORTH NAD 27 (SURFACE LOCATION)	
LATITUDE = 39°56'00.71" (39.933532)	
LONGITUDE = 108°14'05.81" (108.234947)	
STATE PLANE COORDINATES	
N: = 230456.843	E: = 1233149.392

FROM SURFACE LOCATION TO NEAREST:	
TOWN/COMMUNITY: NE 18.5 MILES TO MEEKER	
UNIT BOUNDARY: NLY ±14,006' TO BOUNDARY	
UNIT BOUNDARY: WLY ±11,844' TO BOUNDARY	
UNIT BOUNDARY: N13°W ±3,466' TO BOUNDARY	
LEASE BOUNDARY: NLY ±698' TO BOUNDARY	
LEASE BOUNDARY: ELY ±1,902' TO BOUNDARY	
EXISTING WELL: NELY ±75' TO T25X-25G WELL HEAD	
EXISTING WELL: NWLY ±4,534' TO 23-4 FEDERAL	

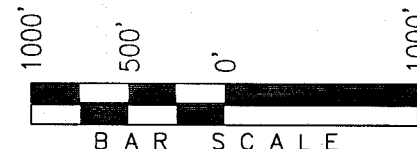
1939
Brass
Cap

T1S, R97W, 6th P.M.



ExxonMobil Oil Corporation

TARGET BOTTOM HOLE, PICEANCE CREEK UNIT
T25X-25G5, LOCATED AS SHOWN IN THE SE
1/4 SE 1/4 (LOT 16) OF SECTION 26, T1S,
R97W, 6th P.M., RIO BLANCO COUNTY,
COLORADO.



◆ = SECTION CORNERS LOCATED

BASIS OF BEARINGS & BASIS OF ELEVATION

BASIS OF BEARINGS IS A LINE BETWEEN MAGNOLIA & MEYERS TRIANGULATION
STATION GRID COORDINATES WHICH IS ASSUMED TO BEAR S82°36'07\"E.

BASIS OF ELEVATIONS IS MAGNOLIA TRIANGULATION STATION LOCATED IN THE
NW 1/4 OF SECTION 9, T2S, R96W, 6th P.M. REPORTED FROM THE NATIONAL
GEODETIC SURVEY AS BEING 7529 FEET (NAVD 88).
WE MEASURED IT TO BE 7526.2'

NOTES:

1. Well footages are measured at right angles to the
Section Lines.
2. Bearings are based on Global Positioning Satellite
observations.

"See Sheet 1e"

THIS IS TO CERTIFY THAT THE ABOVE WAS PREPARED
FROM FIELD NOTES OF ACTUAL SURVEY MADE BY ME, OR
UNDER MY SUPERVISION AND THAT THE SAME ARE TRUE
AND CORRECT TO THE BEST OF MY KNOWLEDGE AND BELIEF.

Surveyor's Signature

REGISTERED LAND SURVEYOR
REGISTRATION NO. 11890
STATE OF COLORADO

TRI STATE LAND SURVEYING & CONSULTING

180 NORTH VERNAL AVE. - VERNAL, UTAH 84078
(435) 781-2501

DATE SURVEYED:
12-13-06

SURVEYED BY: D.P.

SHEET

DATE DRAWN:
03-28-07

DRAWN BY: D.COX

1ee

REVISED:

SCALE: 1" = 1000'

OF 8

CO-NORTH NAD 83 (BOTTOM HOLE)		FROM BOTTOM OF HOLE TO NEAREST:	
LATITUDE = 39°55'53.24" (39.931455)		UNIT BOUNDARY: NLY ±4,103' TO BOUNDARY	
LONGITUDE = 108°14'23.10" (108.239749)		UNIT BOUNDARY: WLY ±10,671' TO BOUNDARY	
STATE PLANE COORDINATES		LEASE BOUNDARY: SLY ±1,222' TO BOUNDARY	
N: = 1229746.097	E: = 2231800.153	LEASE BOUNDARY: WLY ±2,419' TO BOUNDARY	
CO-NORTH NAD 27 (BOTTOM HOLE)			
LATITUDE = 39°55'53.34" (39.931483)			
LONGITUDE = 108°14'20.79" (108.239108)			
STATE PLANE COORDINATES			
N: = 229747.000	E: = 1231960.000		