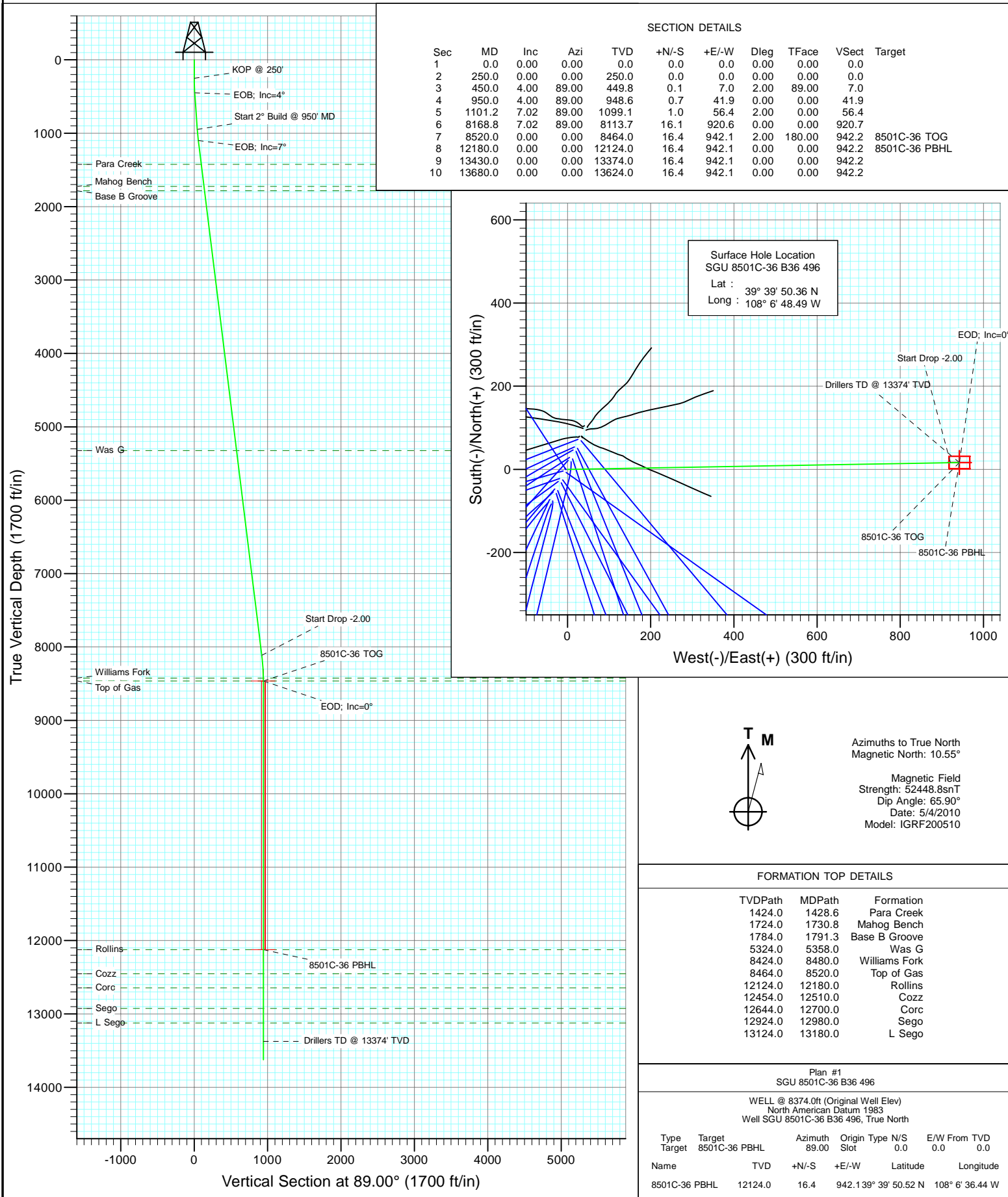




Project: Story Gulch
Site: S36-T4S-R96W (B36 496)
Well: SGU 8501C-36 B36 496
Wellbore: DD
Design: Plan #1



Cathedral Energy Services

Planning Report

Database:	EDM 5000.1 US Multi Users DB	Local Co-ordinate Reference:	Well SGU 8501C-36 B36 496
Company:	EnCana Oil & Gas (USA) Inc	TVD Reference:	WELL @ 8374.0ft (Original Well Elev)
Project:	Story Gulch	MD Reference:	WELL @ 8374.0ft (Original Well Elev)
Site:	S36-T4S-R96W (B36 496)	North Reference:	True
Well:	SGU 8501C-36 B36 496	Survey Calculation Method:	Minimum Curvature
Wellbore:	DD		
Design:	Plan #1		

Project	Story Gulch		
Map System:	US State Plane 1983	System Datum:	Mean Sea Level
Geo Datum:	North American Datum 1983		
Map Zone:	Colorado Central Zone		

Site		S36-T4S-R96W (B36 496)			
Site Position:		Northing:	1,677,422.27 ft	Latitude:	39° 39' 51.36 N
From:	Lat/Long	Easting:	2,264,394.80 ft	Longitude:	108° 6' 47.88 W
Position Uncertainty:	0.0 ft	Slot Radius:	13.200 in	Grid Convergence:	-1.65 °

Well	SGU 8501C-36 B36 496					
Well Position	+N/-S	0.0 ft	Northing:	1,677,322.27 ft	Latitude:	39° 39' 50.36 N
	+E/-W	0.0 ft	Easting:	2,264,344.28 ft	Longitude:	108° 6' 48.49 W
Position Uncertainty		0.0 ft	Wellhead Elevation:	ft	Ground Level:	8,352.0 ft

Wellbore	DD				
Magnetics	Model Name	Sample Date	Declination (°)	Dip Angle (°)	Field Strength (nT)
	IGRF200510	5/4/2010	10.55	65.90	52,449

Design	Plan #1				
Audit Notes:					
Version:	Phase:	PLAN		Tie On Depth:	0.0
Vertical Section:	Depth From (TVD) (ft)	+N/-S (ft)	+E/-W (ft)	Direction (°)	
	0.0	0.0	0.0	89.00	

Plan Sections										
Measured Depth (ft)	Inclination (°)	Azimuth (°)	Vertical Depth (ft)	+N/-S (ft)	+E/-W (ft)	Dogleg Rate (°/100ft)	Build Rate (°/100ft)	Turn Rate (°/100ft)	TFO (°)	Target
0.0	0.00	0.00	0.0	0.0	0.0	0.00	0.00	0.00	0.00	
250.0	0.00	0.00	250.0	0.0	0.0	0.00	0.00	0.00	0.00	
450.0	4.00	89.00	449.8	0.1	7.0	2.00	2.00	0.00	89.00	
950.0	4.00	89.00	948.6	0.7	41.9	0.00	0.00	0.00	0.00	
1,101.2	7.02	89.00	1,099.1	1.0	56.4	2.00	2.00	0.00	0.00	
8,168.8	7.02	89.00	8,113.7	16.1	920.6	0.00	0.00	0.00	0.00	
8,520.0	0.00	0.00	8,464.0	16.4	942.1	2.00	-2.00	0.00	180.00	8501C-36 TOG
12,180.0	0.00	0.00	12,124.0	16.4	942.1	0.00	0.00	0.00	0.00	8501C-36 PBHL
13,430.0	0.00	0.00	13,374.0	16.4	942.1	0.00	0.00	0.00	0.00	
13,680.0	0.00	0.00	13,624.0	16.4	942.1	0.00	0.00	0.00	0.00	

Cathedral Energy Services

Planning Report

Database:	EDM 5000.1 US Multi Users DB	Local Co-ordinate Reference:	Well SGU 8501C-36 B36 496
Company:	EnCana Oil & Gas (USA) Inc	TVD Reference:	WELL @ 8374.0ft (Original Well Elev)
Project:	Story Gulch	MD Reference:	WELL @ 8374.0ft (Original Well Elev)
Site:	S36-T4S-R96W (B36 496)	North Reference:	True
Well:	SGU 8501C-36 B36 496	Survey Calculation Method:	Minimum Curvature
Wellbore:	DD		
Design:	Plan #1		

Planned Survey

Measured Depth (ft)	Inclination (°)	Azimuth (°)	Vertical Depth (ft)	+N/-S (ft)	+E/-W (ft)	Vertical Section (ft)	Dogleg Rate (°/100ft)	Build Rate (°/100ft)	Comments / Formations
0.0	0.00	0.00	0.0	0.0	0.0	0.0	0.00	0.00	
30.0	0.00	0.00	30.0	0.0	0.0	0.0	0.00	0.00	
60.0	0.00	0.00	60.0	0.0	0.0	0.0	0.00	0.00	
90.0	0.00	0.00	90.0	0.0	0.0	0.0	0.00	0.00	
120.0	0.00	0.00	120.0	0.0	0.0	0.0	0.00	0.00	
150.0	0.00	0.00	150.0	0.0	0.0	0.0	0.00	0.00	
180.0	0.00	0.00	180.0	0.0	0.0	0.0	0.00	0.00	
210.0	0.00	0.00	210.0	0.0	0.0	0.0	0.00	0.00	
240.0	0.00	0.00	240.0	0.0	0.0	0.0	0.00	0.00	
250.0	0.00	0.00	250.0	0.0	0.0	0.0	0.00	0.00	KOP @ 250'
270.0	0.40	89.00	270.0	0.0	0.1	0.1	2.00	2.00	
300.0	1.00	89.00	300.0	0.0	0.4	0.4	2.00	2.00	
330.0	1.60	89.00	330.0	0.0	1.1	1.1	2.00	2.00	
360.0	2.20	89.00	360.0	0.0	2.1	2.1	2.00	2.00	
390.0	2.80	89.00	389.9	0.1	3.4	3.4	2.00	2.00	
420.0	3.40	89.00	419.9	0.1	5.0	5.0	2.00	2.00	
450.0	4.00	89.00	449.8	0.1	7.0	7.0	2.00	2.00	EOB; Inc=4°
480.0	4.00	89.00	479.8	0.2	9.1	9.1	0.00	0.00	
510.0	4.00	89.00	509.7	0.2	11.2	11.2	0.00	0.00	
540.0	4.00	89.00	539.6	0.2	13.3	13.3	0.00	0.00	
570.0	4.00	89.00	569.5	0.3	15.3	15.3	0.00	0.00	
600.0	4.00	89.00	599.5	0.3	17.4	17.4	0.00	0.00	
630.0	4.00	89.00	629.4	0.3	19.5	19.5	0.00	0.00	
660.0	4.00	89.00	659.3	0.4	21.6	21.6	0.00	0.00	
690.0	4.00	89.00	689.3	0.4	23.7	23.7	0.00	0.00	
720.0	4.00	89.00	719.2	0.5	25.8	25.8	0.00	0.00	
750.0	4.00	89.00	749.1	0.5	27.9	27.9	0.00	0.00	
780.0	4.00	89.00	779.0	0.5	30.0	30.0	0.00	0.00	
810.0	4.00	89.00	809.0	0.6	32.1	32.1	0.00	0.00	
840.0	4.00	89.00	838.9	0.6	34.2	34.2	0.00	0.00	
870.0	4.00	89.00	868.8	0.6	36.3	36.3	0.00	0.00	
900.0	4.00	89.00	898.7	0.7	38.4	38.4	0.00	0.00	
930.0	4.00	89.00	928.7	0.7	40.5	40.5	0.00	0.00	
950.0	4.00	89.00	948.6	0.7	41.9	41.9	0.00	0.00	Start 2° Build @ 950' MD
960.0	4.20	89.00	958.6	0.7	42.6	42.6	2.00	2.00	
990.0	4.80	89.00	988.5	0.8	44.9	44.9	2.00	2.00	
1,020.0	5.40	89.00	1,018.4	0.8	47.6	47.6	2.00	2.00	
1,050.0	6.00	89.00	1,048.2	0.9	50.6	50.6	2.00	2.00	
1,080.0	6.60	89.00	1,078.1	0.9	53.9	53.9	2.00	2.00	
1,101.2	7.02	89.00	1,099.1	1.0	56.4	56.4	2.00	2.00	EOB; Inc=7°
1,110.0	7.02	89.00	1,107.8	1.0	57.4	57.5	0.00	0.00	
1,140.0	7.02	89.00	1,137.6	1.1	61.1	61.1	0.00	0.00	
1,170.0	7.02	89.00	1,167.4	1.1	64.8	64.8	0.00	0.00	
1,200.0	7.02	89.00	1,197.2	1.2	68.5	68.5	0.00	0.00	
1,230.0	7.02	89.00	1,226.9	1.3	72.1	72.1	0.00	0.00	
1,260.0	7.02	89.00	1,256.7	1.3	75.8	75.8	0.00	0.00	
1,290.0	7.02	89.00	1,286.5	1.4	79.5	79.5	0.00	0.00	
1,320.0	7.02	89.00	1,316.3	1.5	83.1	83.1	0.00	0.00	
1,350.0	7.02	89.00	1,346.0	1.5	86.8	86.8	0.00	0.00	
1,380.0	7.02	89.00	1,375.8	1.6	90.5	90.5	0.00	0.00	
1,410.0	7.02	89.00	1,405.6	1.6	94.1	94.1	0.00	0.00	
1,428.6	7.02	89.00	1,424.0	1.7	96.4	96.4	0.00	0.00	Para Creek

Cathedral Energy Services

Planning Report

Database:	EDM 5000.1 US Multi Users DB	Local Co-ordinate Reference:	Well SGU 8501C-36 B36 496
Company:	EnCana Oil & Gas (USA) Inc	TVD Reference:	WELL @ 8374.0ft (Original Well Elev)
Project:	Story Gulch	MD Reference:	WELL @ 8374.0ft (Original Well Elev)
Site:	S36-T4S-R96W (B36 496)	North Reference:	True
Well:	SGU 8501C-36 B36 496	Survey Calculation Method:	Minimum Curvature
Wellbore:	DD		
Design:	Plan #1		

Planned Survey

Measured Depth (ft)	Inclination (°)	Azimuth (°)	Vertical Depth (ft)	+N/-S (ft)	+E/-W (ft)	Vertical Section (ft)	Dogleg Rate (°/100ft)	Build Rate (°/100ft)	Comments / Formations
1,440.0	7.02	89.00	1,435.4	1.7	97.8	97.8	0.00	0.00	
1,470.0	7.02	89.00	1,465.1	1.8	101.5	101.5	0.00	0.00	
1,500.0	7.02	89.00	1,494.9	1.8	105.1	105.1	0.00	0.00	
1,530.0	7.02	89.00	1,524.7	1.9	108.8	108.8	0.00	0.00	
1,560.0	7.02	89.00	1,554.5	2.0	112.5	112.5	0.00	0.00	
1,590.0	7.02	89.00	1,584.2	2.0	116.1	116.2	0.00	0.00	
1,620.0	7.02	89.00	1,614.0	2.1	119.8	119.8	0.00	0.00	
1,650.0	7.02	89.00	1,643.8	2.2	123.5	123.5	0.00	0.00	
1,680.0	7.02	89.00	1,673.6	2.2	127.1	127.2	0.00	0.00	
1,710.0	7.02	89.00	1,703.3	2.3	130.8	130.8	0.00	0.00	
1,730.8	7.02	89.00	1,724.0	2.3	133.4	133.4	0.00	0.00	Mahog Bench
1,740.0	7.02	89.00	1,733.1	2.3	134.5	134.5	0.00	0.00	
1,770.0	7.02	89.00	1,762.9	2.4	138.1	138.2	0.00	0.00	
1,791.3	7.02	89.00	1,784.0	2.5	140.7	140.8	0.00	0.00	Base B Groove
1,800.0	7.02	89.00	1,792.7	2.5	141.8	141.8	0.00	0.00	
1,830.0	7.02	89.00	1,822.4	2.5	145.5	145.5	0.00	0.00	
1,860.0	7.02	89.00	1,852.2	2.6	149.2	149.2	0.00	0.00	
1,890.0	7.02	89.00	1,882.0	2.7	152.8	152.8	0.00	0.00	
1,920.0	7.02	89.00	1,911.8	2.7	156.5	156.5	0.00	0.00	
1,950.0	7.02	89.00	1,941.5	2.8	160.2	160.2	0.00	0.00	
1,980.0	7.02	89.00	1,971.3	2.9	163.8	163.9	0.00	0.00	
2,010.0	7.02	89.00	2,001.1	2.9	167.5	167.5	0.00	0.00	
2,040.0	7.02	89.00	2,030.9	3.0	171.2	171.2	0.00	0.00	
2,070.0	7.02	89.00	2,060.6	3.0	174.8	174.9	0.00	0.00	
2,100.0	7.02	89.00	2,090.4	3.1	178.5	178.5	0.00	0.00	
2,130.0	7.02	89.00	2,120.2	3.2	182.2	182.2	0.00	0.00	
2,160.0	7.02	89.00	2,150.0	3.2	185.8	185.9	0.00	0.00	
2,190.0	7.02	89.00	2,179.7	3.3	189.5	189.5	0.00	0.00	
2,220.0	7.02	89.00	2,209.5	3.4	193.2	193.2	0.00	0.00	
2,250.0	7.02	89.00	2,239.3	3.4	196.8	196.9	0.00	0.00	
2,280.0	7.02	89.00	2,269.1	3.5	200.5	200.5	0.00	0.00	
2,310.0	7.02	89.00	2,298.8	3.6	204.2	204.2	0.00	0.00	
2,340.0	7.02	89.00	2,328.6	3.6	207.8	207.9	0.00	0.00	
2,370.0	7.02	89.00	2,358.4	3.7	211.5	211.5	0.00	0.00	
2,400.0	7.02	89.00	2,388.2	3.8	215.2	215.2	0.00	0.00	
2,430.0	7.02	89.00	2,417.9	3.8	218.8	218.9	0.00	0.00	
2,460.0	7.02	89.00	2,447.7	3.9	222.5	222.6	0.00	0.00	
2,490.0	7.02	89.00	2,477.5	3.9	226.2	226.2	0.00	0.00	

Targets

Target Name	Dip Angle (°)	Dip Dir. (°)	TVD (ft)	+N/-S (ft)	+E/-W (ft)	Northing (ft)	Easting (ft)	Latitude	Longitude
8501C-36 PBHL	0.00	0.00	12,124.0	16.4	942.1	1,677,311.59	2,265,286.42	39° 39' 50.52 N	108° 6' 36.44 W
- hit/miss target									
- Shape									
- plan misses target center by 9673.1ft at 2490.0ft MD (2477.5 TVD, 3.9 N, 226.2 E)									
- Rectangle (sides W30.0 H50.0 D0.0)									
8501C-36 TOG	0.00	0.00	8,464.0	16.4	942.1	1,677,311.59	2,265,286.42	39° 39' 50.52 N	108° 6' 36.44 W
- plan misses target center by 6029.2ft at 2490.0ft MD (2477.5 TVD, 3.9 N, 226.2 E)									
- Point									

Cathedral Energy Services

Planning Report

Database:	EDM 5000.1 US Multi Users DB	Local Co-ordinate Reference:	Well SGU 8501C-36 B36 496
Company:	EnCana Oil & Gas (USA) Inc	TVD Reference:	WELL @ 8374.0ft (Original Well Elev)
Project:	Story Gulch	MD Reference:	WELL @ 8374.0ft (Original Well Elev)
Site:	S36-T4S-R96W (B36 496)	North Reference:	True
Well:	SGU 8501C-36 B36 496	Survey Calculation Method:	Minimum Curvature
Wellbore:	DD		
Design:	Plan #1		

Planned Survey									
Measured Depth (ft)	Inclination (°)	Azimuth (°)	Vertical Depth (ft)	+N/-S (ft)	+E/-W (ft)	Vertical Section (ft)	Dogleg Rate (°/100ft)	Build Rate (°/100ft)	Comments / Formations
2,500.0	7.02	89.00	2,487.4	4.0	227.4	227.4	0.00	0.00	
2,600.0	7.02	89.00	2,586.7	4.2	239.6	239.7	0.00	0.00	
2,700.0	7.02	89.00	2,685.9	4.4	251.9	251.9	0.00	0.00	
2,800.0	7.02	89.00	2,785.2	4.6	264.1	264.1	0.00	0.00	
2,900.0	7.02	89.00	2,884.4	4.8	276.3	276.4	0.00	0.00	
3,000.0	7.02	89.00	2,983.7	5.0	288.5	288.6	0.00	0.00	
3,100.0	7.02	89.00	3,082.9	5.2	300.8	300.8	0.00	0.00	
3,200.0	7.02	89.00	3,182.1	5.5	313.0	313.0	0.00	0.00	
3,300.0	7.02	89.00	3,281.4	5.7	325.2	325.3	0.00	0.00	
3,400.0	7.02	89.00	3,380.6	5.9	337.5	337.5	0.00	0.00	
3,500.0	7.02	89.00	3,479.9	6.1	349.7	349.7	0.00	0.00	
3,600.0	7.02	89.00	3,579.1	6.3	361.9	362.0	0.00	0.00	
3,700.0	7.02	89.00	3,678.4	6.5	374.1	374.2	0.00	0.00	
3,800.0	7.02	89.00	3,777.6	6.7	386.4	386.4	0.00	0.00	
3,900.0	7.02	89.00	3,876.9	7.0	398.6	398.7	0.00	0.00	
4,000.0	7.02	89.00	3,976.1	7.2	410.8	410.9	0.00	0.00	
4,100.0	7.02	89.00	4,075.4	7.4	423.0	423.1	0.00	0.00	
4,200.0	7.02	89.00	4,174.6	7.6	435.3	435.3	0.00	0.00	
4,300.0	7.02	89.00	4,273.9	7.8	447.5	447.6	0.00	0.00	
4,400.0	7.02	89.00	4,373.1	8.0	459.7	459.8	0.00	0.00	
4,500.0	7.02	89.00	4,472.4	8.2	472.0	472.0	0.00	0.00	
4,600.0	7.02	89.00	4,571.6	8.4	484.2	484.3	0.00	0.00	
4,700.0	7.02	89.00	4,670.9	8.7	496.4	496.5	0.00	0.00	
4,800.0	7.02	89.00	4,770.1	8.9	508.6	508.7	0.00	0.00	
4,900.0	7.02	89.00	4,869.4	9.1	520.9	520.9	0.00	0.00	
5,000.0	7.02	89.00	4,968.6	9.3	533.1	533.2	0.00	0.00	
5,100.0	7.02	89.00	5,067.9	9.5	545.3	545.4	0.00	0.00	
5,200.0	7.02	89.00	5,167.1	9.7	557.6	557.6	0.00	0.00	
5,300.0	7.02	89.00	5,266.4	9.9	569.8	569.9	0.00	0.00	
5,358.0	7.02	89.00	5,324.0	10.1	576.9	577.0	0.00	0.00	Was G
5,400.0	7.02	89.00	5,365.6	10.1	582.0	582.1	0.00	0.00	
5,500.0	7.02	89.00	5,464.9	10.4	594.2	594.3	0.00	0.00	
5,600.0	7.02	89.00	5,564.1	10.6	606.5	606.6	0.00	0.00	
5,700.0	7.02	89.00	5,663.4	10.8	618.7	618.8	0.00	0.00	
5,800.0	7.02	89.00	5,762.6	11.0	630.9	631.0	0.00	0.00	
5,900.0	7.02	89.00	5,861.9	11.2	643.1	643.2	0.00	0.00	
6,000.0	7.02	89.00	5,961.1	11.4	655.4	655.5	0.00	0.00	
6,100.0	7.02	89.00	6,060.4	11.6	667.6	667.7	0.00	0.00	
6,200.0	7.02	89.00	6,159.6	11.9	679.8	679.9	0.00	0.00	
6,300.0	7.02	89.00	6,258.9	12.1	692.1	692.2	0.00	0.00	
6,400.0	7.02	89.00	6,358.1	12.3	704.3	704.4	0.00	0.00	
6,500.0	7.02	89.00	6,457.4	12.5	716.5	716.6	0.00	0.00	
6,600.0	7.02	89.00	6,556.6	12.7	728.7	728.8	0.00	0.00	
6,700.0	7.02	89.00	6,655.9	12.9	741.0	741.1	0.00	0.00	
6,800.0	7.02	89.00	6,755.1	13.1	753.2	753.3	0.00	0.00	
6,900.0	7.02	89.00	6,854.4	13.3	765.4	765.5	0.00	0.00	
7,000.0	7.02	89.00	6,953.6	13.6	777.6	777.8	0.00	0.00	
7,100.0	7.02	89.00	7,052.9	13.8	789.9	790.0	0.00	0.00	
7,200.0	7.02	89.00	7,152.1	14.0	802.1	802.2	0.00	0.00	
7,300.0	7.02	89.00	7,251.4	14.2	814.3	814.5	0.00	0.00	
7,400.0	7.02	89.00	7,350.6	14.4	826.6	826.7	0.00	0.00	
7,500.0	7.02	89.00	7,449.9	14.6	838.8	838.9	0.00	0.00	

Cathedral Energy Services

Planning Report

Database:	EDM 5000.1 US Multi Users DB	Local Co-ordinate Reference:	Well SGU 8501C-36 B36 496
Company:	EnCana Oil & Gas (USA) Inc	TVD Reference:	WELL @ 8374.0ft (Original Well Elev)
Project:	Story Gulch	MD Reference:	WELL @ 8374.0ft (Original Well Elev)
Site:	S36-T4S-R96W (B36 496)	North Reference:	True
Well:	SGU 8501C-36 B36 496	Survey Calculation Method:	Minimum Curvature
Wellbore:	DD		
Design:	Plan #1		

Planned Survey									
Measured Depth (ft)	Inclination (°)	Azimuth (°)	Vertical Depth (ft)	+N/-S (ft)	+E/-W (ft)	Vertical Section (ft)	Dogleg Rate (°/100ft)	Build Rate (°/100ft)	Comments / Formations
7,600.0	7.02	89.00	7,549.1	14.8	851.0	851.1	0.00	0.00	
7,700.0	7.02	89.00	7,648.4	15.1	863.2	863.4	0.00	0.00	
7,800.0	7.02	89.00	7,747.6	15.3	875.5	875.6	0.00	0.00	
7,900.0	7.02	89.00	7,846.9	15.5	887.7	887.8	0.00	0.00	
8,000.0	7.02	89.00	7,946.1	15.7	899.9	900.1	0.00	0.00	
8,100.0	7.02	89.00	8,045.4	15.9	912.1	912.3	0.00	0.00	
8,168.8	7.02	89.00	8,113.7	16.1	920.6	920.7	0.00	0.00	Start Drop -2.00
8,200.0	6.40	89.00	8,144.6	16.1	924.2	924.3	2.00	-2.00	
8,300.0	4.40	89.00	8,244.2	16.3	933.6	933.8	2.00	-2.00	
8,400.0	2.40	89.00	8,344.0	16.4	939.5	939.7	2.00	-2.00	
8,480.0	0.80	89.00	8,424.0	16.4	941.8	941.9	2.00	-2.00	Williams Fork
8,500.0	0.40	89.00	8,444.0	16.4	942.0	942.1	2.00	-2.00	
8,520.0	0.00	0.00	8,464.0	16.4	942.1	942.2	2.00	-2.00	EOD; Inc=0° - Top of Gas - 8501C-36 TOG
8,600.0	0.00	0.00	8,544.0	16.4	942.1	942.2	0.00	0.00	
8,700.0	0.00	0.00	8,644.0	16.4	942.1	942.2	0.00	0.00	
8,800.0	0.00	0.00	8,744.0	16.4	942.1	942.2	0.00	0.00	
8,900.0	0.00	0.00	8,844.0	16.4	942.1	942.2	0.00	0.00	
9,000.0	0.00	0.00	8,944.0	16.4	942.1	942.2	0.00	0.00	
9,100.0	0.00	0.00	9,044.0	16.4	942.1	942.2	0.00	0.00	
9,200.0	0.00	0.00	9,144.0	16.4	942.1	942.2	0.00	0.00	
9,300.0	0.00	0.00	9,244.0	16.4	942.1	942.2	0.00	0.00	
9,400.0	0.00	0.00	9,344.0	16.4	942.1	942.2	0.00	0.00	
9,500.0	0.00	0.00	9,444.0	16.4	942.1	942.2	0.00	0.00	
9,600.0	0.00	0.00	9,544.0	16.4	942.1	942.2	0.00	0.00	
9,700.0	0.00	0.00	9,644.0	16.4	942.1	942.2	0.00	0.00	
9,800.0	0.00	0.00	9,744.0	16.4	942.1	942.2	0.00	0.00	
9,900.0	0.00	0.00	9,844.0	16.4	942.1	942.2	0.00	0.00	
10,000.0	0.00	0.00	9,944.0	16.4	942.1	942.2	0.00	0.00	
10,100.0	0.00	0.00	10,044.0	16.4	942.1	942.2	0.00	0.00	
10,200.0	0.00	0.00	10,144.0	16.4	942.1	942.2	0.00	0.00	
10,300.0	0.00	0.00	10,244.0	16.4	942.1	942.2	0.00	0.00	
10,400.0	0.00	0.00	10,344.0	16.4	942.1	942.2	0.00	0.00	
10,500.0	0.00	0.00	10,444.0	16.4	942.1	942.2	0.00	0.00	
10,600.0	0.00	0.00	10,544.0	16.4	942.1	942.2	0.00	0.00	
10,700.0	0.00	0.00	10,644.0	16.4	942.1	942.2	0.00	0.00	
10,800.0	0.00	0.00	10,744.0	16.4	942.1	942.2	0.00	0.00	
10,900.0	0.00	0.00	10,844.0	16.4	942.1	942.2	0.00	0.00	
11,000.0	0.00	0.00	10,944.0	16.4	942.1	942.2	0.00	0.00	
11,100.0	0.00	0.00	11,044.0	16.4	942.1	942.2	0.00	0.00	
11,200.0	0.00	0.00	11,144.0	16.4	942.1	942.2	0.00	0.00	
11,300.0	0.00	0.00	11,244.0	16.4	942.1	942.2	0.00	0.00	
11,400.0	0.00	0.00	11,344.0	16.4	942.1	942.2	0.00	0.00	
11,500.0	0.00	0.00	11,444.0	16.4	942.1	942.2	0.00	0.00	
11,600.0	0.00	0.00	11,544.0	16.4	942.1	942.2	0.00	0.00	
11,700.0	0.00	0.00	11,644.0	16.4	942.1	942.2	0.00	0.00	
11,800.0	0.00	0.00	11,744.0	16.4	942.1	942.2	0.00	0.00	
11,900.0	0.00	0.00	11,844.0	16.4	942.1	942.2	0.00	0.00	
12,000.0	0.00	0.00	11,944.0	16.4	942.1	942.2	0.00	0.00	
12,100.0	0.00	0.00	12,044.0	16.4	942.1	942.2	0.00	0.00	
12,180.0	0.00	0.00	12,124.0	16.4	942.1	942.2	0.00	0.00	Rollins - 8501C-36 PBHL
12,200.0	0.00	0.00	12,144.0	16.4	942.1	942.2	0.00	0.00	
12,300.0	0.00	0.00	12,244.0	16.4	942.1	942.2	0.00	0.00	

Cathedral Energy Services

Planning Report

Database:	EDM 5000.1 US Multi Users DB	Local Co-ordinate Reference:	Well SGU 8501C-36 B36 496
Company:	EnCana Oil & Gas (USA) Inc	TVD Reference:	WELL @ 8374.0ft (Original Well Elev)
Project:	Story Gulch	MD Reference:	WELL @ 8374.0ft (Original Well Elev)
Site:	S36-T4S-R96W (B36 496)	North Reference:	True
Well:	SGU 8501C-36 B36 496	Survey Calculation Method:	Minimum Curvature
Wellbore:	DD		
Design:	Plan #1		

Planned Survey

Measured Depth (ft)	Inclination (°)	Azimuth (°)	Vertical Depth (ft)	+N/-S (ft)	+E/-W (ft)	Vertical Section (ft)	Dogleg Rate (°/100ft)	Build Rate (°/100ft)	Comments / Formations
12,400.0	0.00	0.00	12,344.0	16.4	942.1	942.2	0.00	0.00	
12,500.0	0.00	0.00	12,444.0	16.4	942.1	942.2	0.00	0.00	
12,510.0	0.00	0.00	12,454.0	16.4	942.1	942.2	0.00	0.00	Cozz
12,600.0	0.00	0.00	12,544.0	16.4	942.1	942.2	0.00	0.00	
12,700.0	0.00	0.00	12,644.0	16.4	942.1	942.2	0.00	0.00	Corc
12,800.0	0.00	0.00	12,744.0	16.4	942.1	942.2	0.00	0.00	
12,900.0	0.00	0.00	12,844.0	16.4	942.1	942.2	0.00	0.00	
12,980.0	0.00	0.00	12,924.0	16.4	942.1	942.2	0.00	0.00	Sego
13,000.0	0.00	0.00	12,944.0	16.4	942.1	942.2	0.00	0.00	
13,100.0	0.00	0.00	13,044.0	16.4	942.1	942.2	0.00	0.00	
13,180.0	0.00	0.00	13,124.0	16.4	942.1	942.2	0.00	0.00	L Sego
13,200.0	0.00	0.00	13,144.0	16.4	942.1	942.2	0.00	0.00	
13,300.0	0.00	0.00	13,244.0	16.4	942.1	942.2	0.00	0.00	
13,400.0	0.00	0.00	13,344.0	16.4	942.1	942.2	0.00	0.00	
13,430.0	0.00	0.00	13,374.0	16.4	942.1	942.2	0.00	0.00	Drillers TD @ 13374' TVD
13,500.0	0.00	0.00	13,444.0	16.4	942.1	942.2	0.00	0.00	
13,600.0	0.00	0.00	13,544.0	16.4	942.1	942.2	0.00	0.00	
13,680.0	0.00	0.00	13,624.0	16.4	942.1	942.2	0.00	0.00	Permit TD @ 13624' TVD

Targets

Target Name	Dip Angle (°)	Dip Dir. (°)	TVD (ft)	+N/-S (ft)	+E/-W (ft)	Northing (ft)	Easting (ft)	Latitude	Longitude
8501C-36 PBHL - hit/miss target - Shape - Rectangle (sides W30.0 H50.0 D0.0)	0.00	0.00	12,124.0	16.4	942.1	1,677,311.59	2,265,286.42	39° 39' 50.52 N	108° 6' 36.44 W
8501C-36 TOG - plan hits target center - Point	0.00	0.00	8,464.0	16.4	942.1	1,677,311.59	2,265,286.42	39° 39' 50.52 N	108° 6' 36.44 W

Formations

Measured Depth (ft)	Vertical Depth (ft)	Name	Lithology	Dip (°)	Dip Direction (°)
1,428.6	1,424.0	Para Creek		0.00	
1,730.8	1,724.0	Mahog Bench		0.00	
1,791.3	1,784.0	Base B Groove		0.00	
5,358.0	5,324.0	Was G		0.00	
8,480.0	8,424.0	Williams Fork		0.00	
8,520.0	8,464.0	Top of Gas		0.00	
12,180.0	12,124.0	Rollins		0.00	
12,510.0	12,454.0	Cozz		0.00	
12,700.0	12,644.0	Corc		0.00	
12,980.0	12,924.0	Sego		0.00	
13,180.0	13,124.0	L Sego		0.00	

Cathedral Energy Services

Planning Report

Database:	EDM 5000.1 US Multi Users DB	Local Co-ordinate Reference:	Well SGU 8501C-36 B36 496
Company:	EnCana Oil & Gas (USA) Inc	TVD Reference:	WELL @ 8374.0ft (Original Well Elev)
Project:	Story Gulch	MD Reference:	WELL @ 8374.0ft (Original Well Elev)
Site:	S36-T4S-R96W (B36 496)	North Reference:	True
Well:	SGU 8501C-36 B36 496	Survey Calculation Method:	Minimum Curvature
Wellbore:	DD		
Design:	Plan #1		

Plan Annotations				
Measured Depth (ft)	Vertical Depth (ft)	Local Coordinates		Comment
		+N/-S (ft)	+E/-W (ft)	
250.0	250.0	0.0	0.0	KOP @ 250'
450.0	449.8	0.1	7.0	EOB; Inc=4°
950.0	948.6	0.7	41.9	Start 2° Build @ 950' MD
1,101.2	1,099.1	1.0	56.4	EOB; Inc=7°
8,168.8	8,113.7	16.1	920.6	Start Drop -2.00
8,520.0	8,464.0	16.4	942.1	EOD; Inc=0°
13,430.0	13,374.0	16.4	942.1	Drillers TD @ 13374' TVD
13,680.0	13,624.0	16.4	942.1	Permit TD @ 13624' TVD