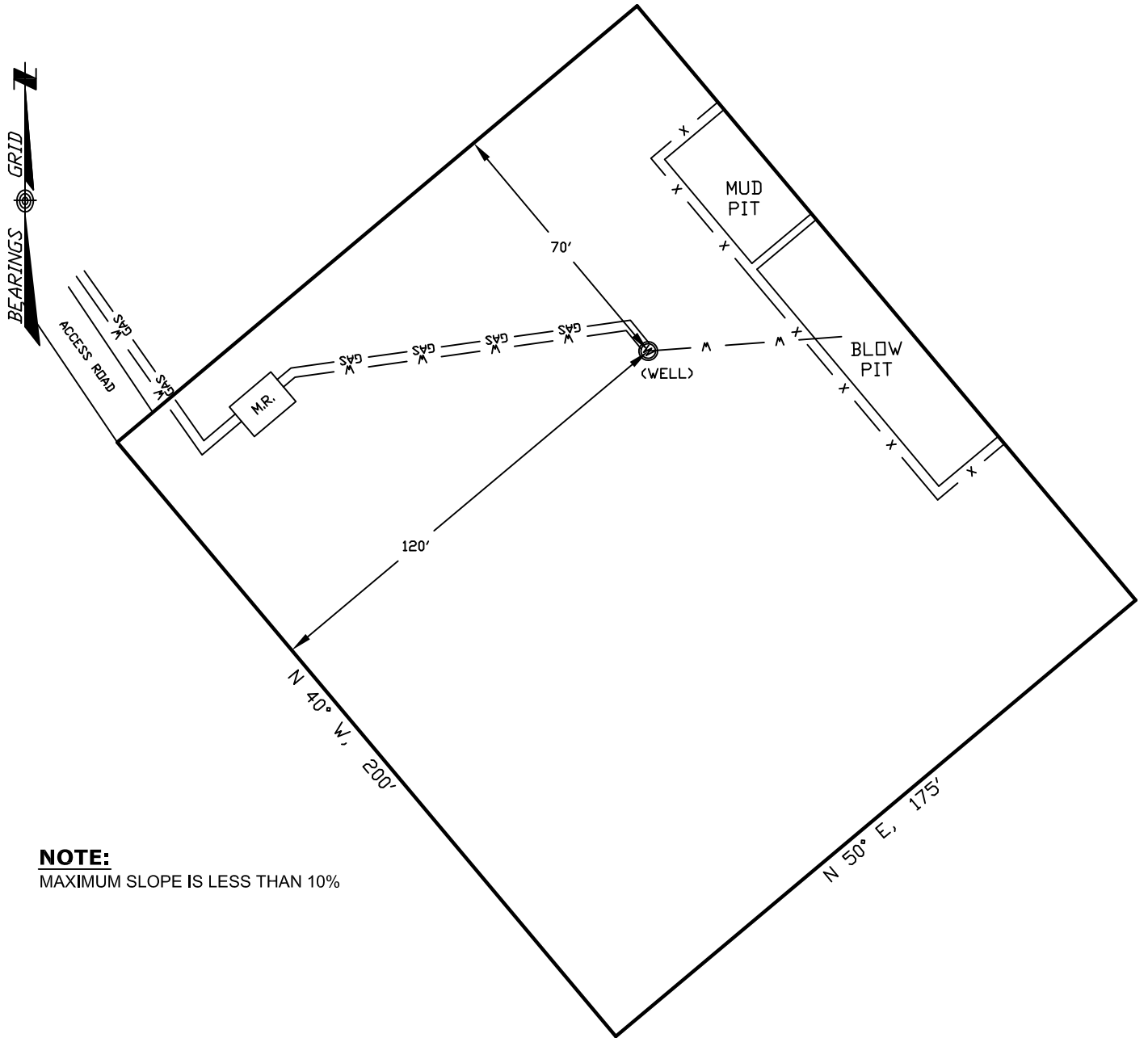


# WELLSITE/PRODUCTION EQUIPMENT LAYOUT

OPERATOR: Pioneer Natural Resources

WELL NAME: Argon 43-31

NESE of SECTION 31 TOWNSHIP 33 S, RANGE 65 W OF THE 6TH P.M., IN LAS ANIMAS COUNTY



**NOTE:**  
MAXIMUM SLOPE IS LESS THAN 10%

**NOTE:**  
MUD AND BLOW PITS WILL BE CONVERTED TO LINED EVAPORATION PITS FOR PRODUCTION.  
WELLHEADS ARE TYPICALLY PCP DRIVE HEADS

**LEGEND:**

- = WELLHEAD
- = EXISTING WELLPAD
- = FENCE (4 STRAND)
- = 4" GAS GATHERING LINE
- = 2" WATER LINE
- M.R. = COMBO METER RUN AND WATER/GAS SEPARATOR
- G.D.S. = GAS DRIVE SYSTEM

**GRAPHIC SCALE**



( IN FEET )

1 inch = 40 ft.

June 10, 2010  
Date Platted

**SHIELDS SURVEY L<sup>td</sup>. C<sup>o</sup>.**  
Raton, New Mexico 87740  
(575)445-1232