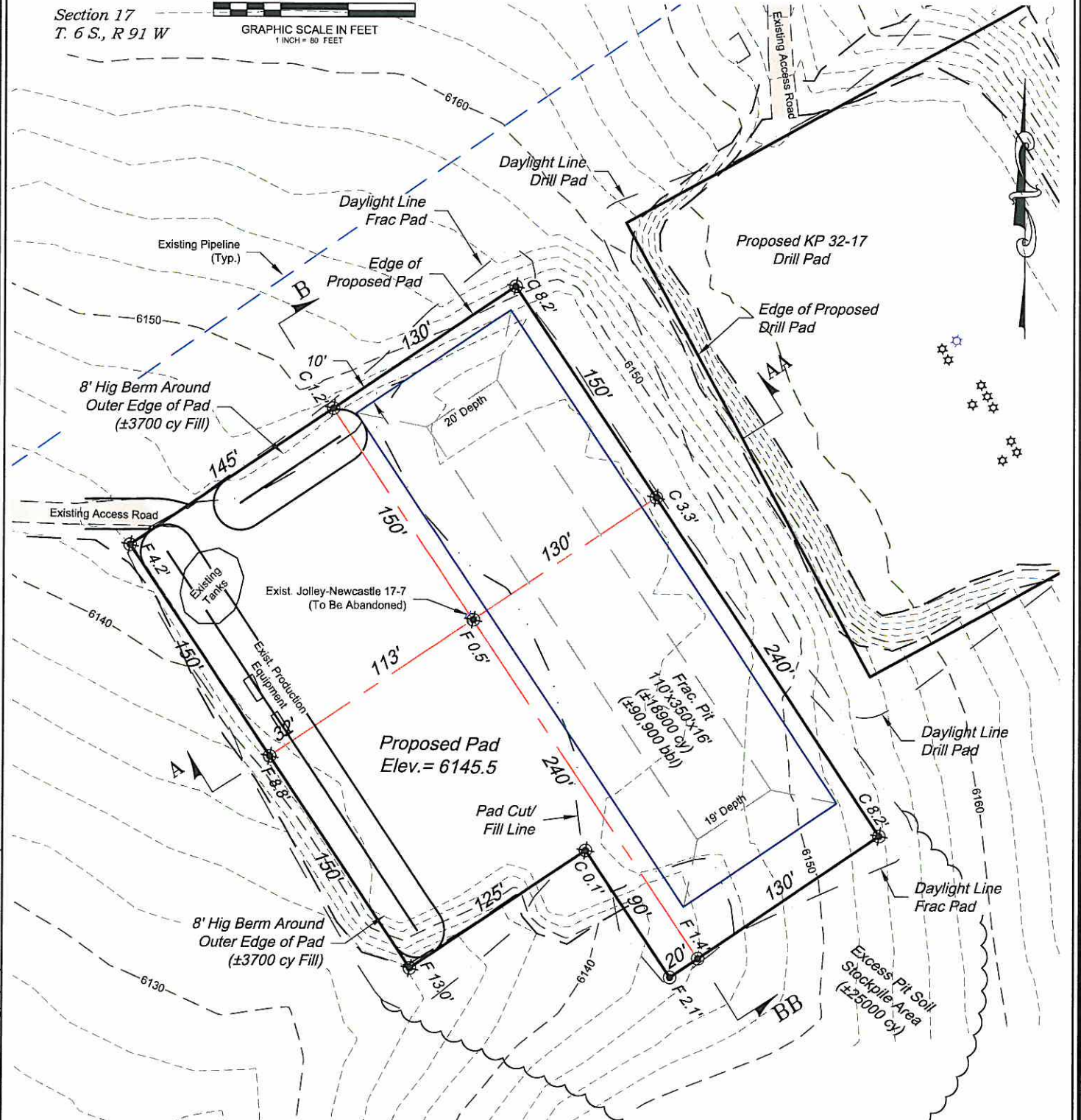
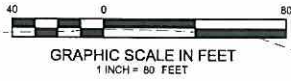


Section 17
T. 6 S., R 91 W



ESTIMATED DIRT QUANTITIES (cy)				
ITEM	CUT	FILL	TOPSOIL	EXCESS
PAD	2422	2591	500	-669(F)
PIT	21400			21400
TOTALS	23822	2591	500	20731

*NOTE:
 1.) USE EXCESS PIT MATERIAL TO COMPLETE PAD SURFACE.
 2.) TOPSOIL VOLUME BASED ON 12" SOIL DEPTH.
 3.) Total Disturbed Area = ±4.18 ac.
 REVISED: 6/25/10

Construction Plan Prepared for:
Williams. Williams Production, RMT
 KP 32-17 Frac. Pad
 CONSTRUCTION LAYOUT

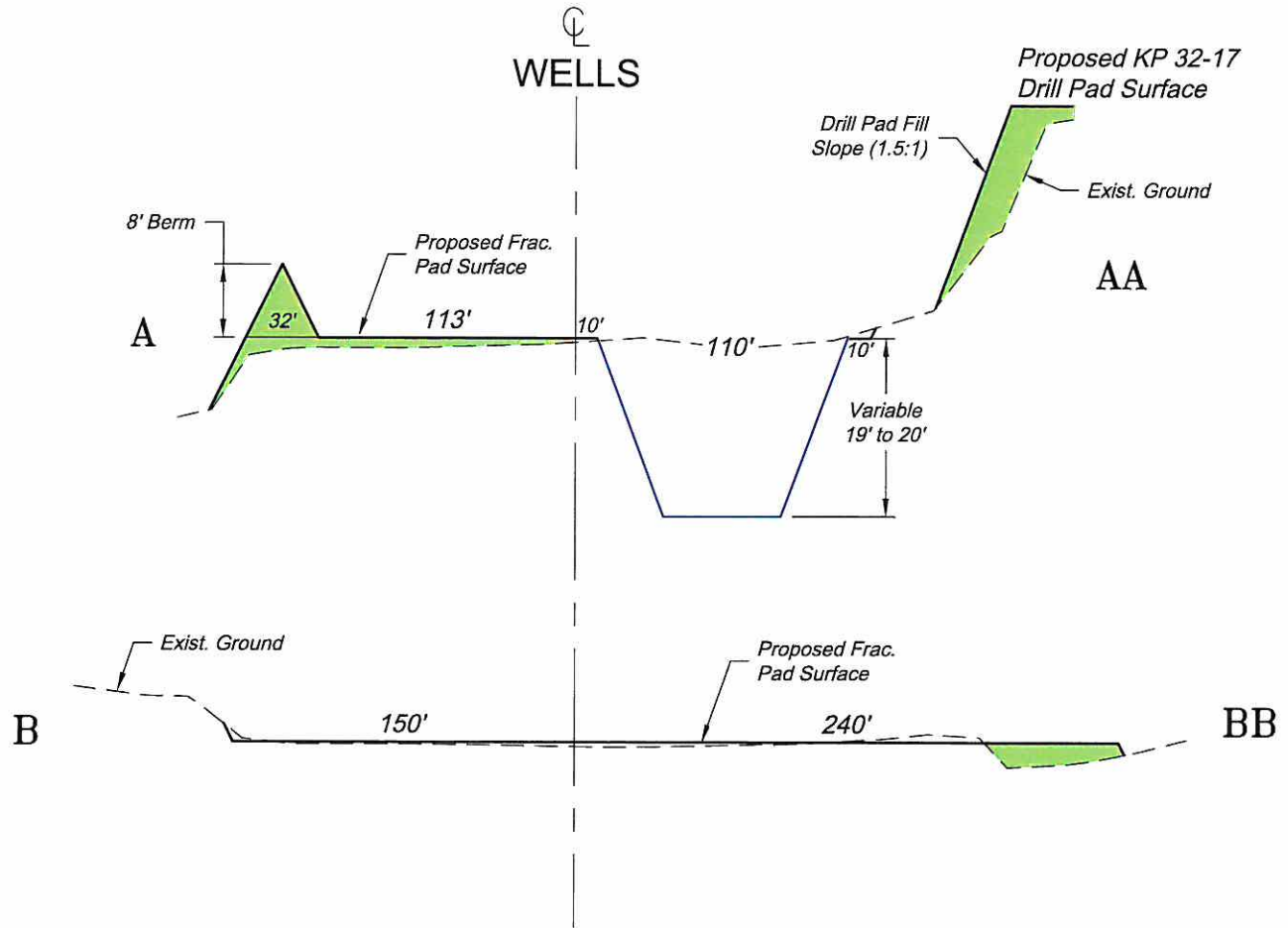
SCALE: 1" = 80'
 DATE: 6/22/10
 PLAT: 1 of 4
 PROJECT: Williams Valley
 DFT: cws

K:\2010\Williams\Kopell\KP 32-17\KP 32-17 Frac Pit.dwg, 6/20/2010 1:53:36 PM, A466b PDF

136 East Third Street
 Rifle, Colorado 81650
 Ph. (970) 625-1330
 Fax (970) 625-2773



Section 17
T. 6 S., R 91 W



SCALE: Horiz.: 1" = 80'
Vert.: 1" = 20'

***NOTE:**
FRAC PIT:
CUT SLOPES = 2:1
FILL SLOPES = 2:1
UNLESS OTHERWISE NOTED.

K:\2010 Williams\Kozzelli\KP 32-17\KP 32-17 Frac Pad.dwg, 6/22/2010 9:51:56 AM

136 East Third Street
Rifle, Colorado 81650
Ph. (970) 625-1330
Fax (970) 625-2773



SCALE: As Noted
DATE: 6/22/10
PLAT: 2 of 4
PROJECT: Williams Valley
DFT: cws

Construction Plan Prepared for:

Williams. Williams Production, RMT

*KP 32-17 Frac. Pad
CONSTRUCTION LAYOUT
CROSS SECTIONS*