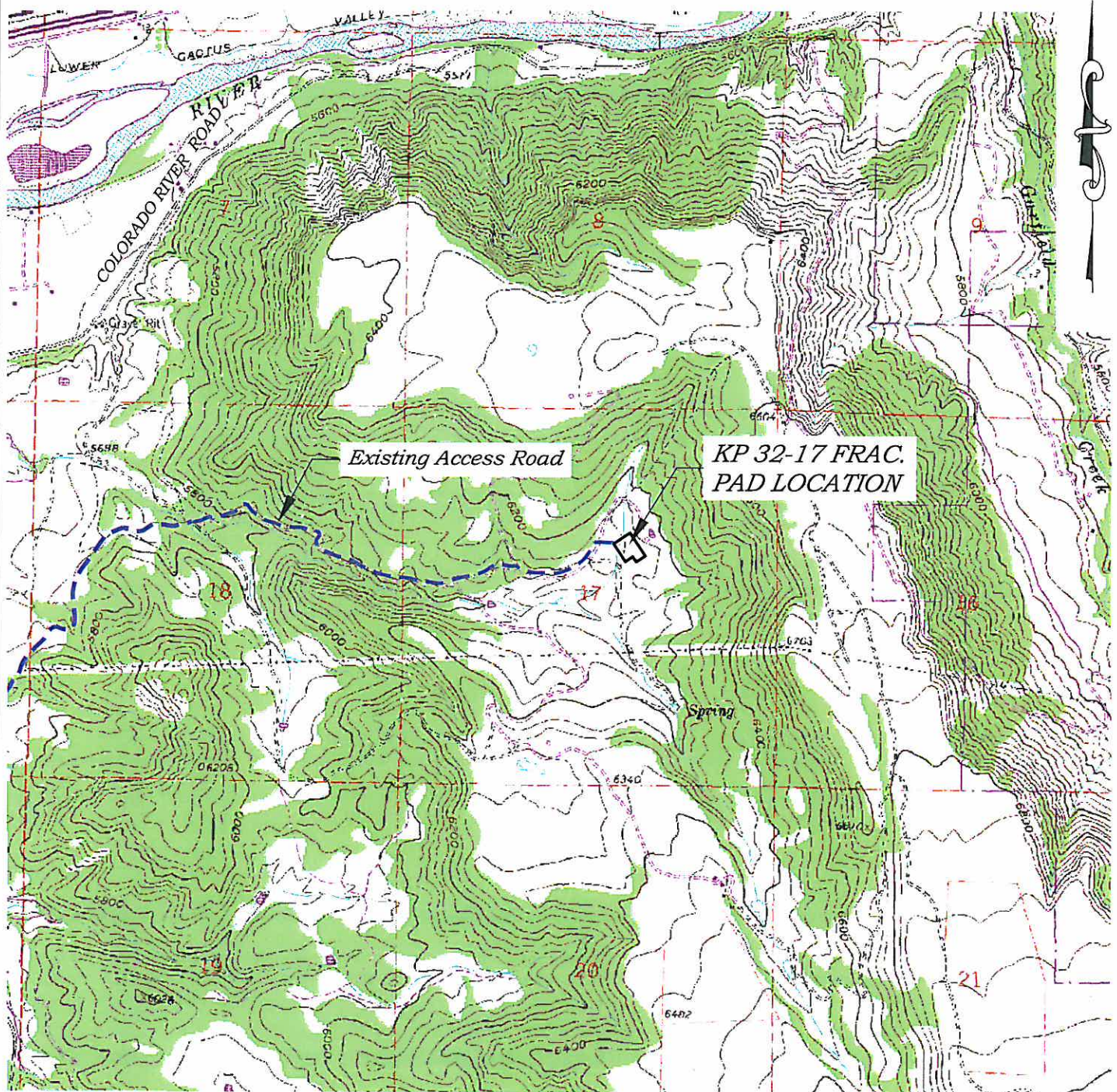


Section 17
T. 6 S., R 91 W



ACCESS DESCRIPTION:
 FROM THE INTERSECTION OF COLORADO INTERSTATE 70 OVERPASS (Exit 97) AND RIVER FRONTAGE ROAD SOUTH OF SILT, COLORADO, PROCEED EAST ±0.4 MILES ALONG RIVER FRONTAGE ROAD TO THE INTERSECTION WITH COUNTY ROAD 311 (DIVIDE CREEK ROAD), PROCEED ALONG DIVIDE CREEK ROAD ±3.3 MILES TO THE INTERSECTION WITH A DIRT/GRAVEL ROAD (McLin Cutoff), PROCEED LEFT IN AN EASTERLY DIRECTION ±1.0 MILES TO A FOUR-WAY INTERSECTION, PROCEED STRAIGHT AND THEN RIGHT IN AN EASTERLY DIRECTION ±1.5 MILES TO THE EXISTING KP 32-17 DRILL PAD LOCATION, AS SHOWN HEREON.

Construction Plan Prepared for:
Williams Williams Production, RMT
 KP 32-17 Frac Pad
 ACCESS ROAD MAP

SCALE: 1" = 2000'
 DATE: 5/21/10
 PLAT: 3 of 4
 PROJECT: Williams Valley
 DFT: CWS

136 East Third Street
 Bife, Colorado 81650
 Ph. (970) 625-1330
 Fax (970) 625-2773



K:\2010 Williams\Kollipelli\KP 32-17\2 KP 32-17 Frac Pad.dwg, 5/21/2010 3:58:00 PM