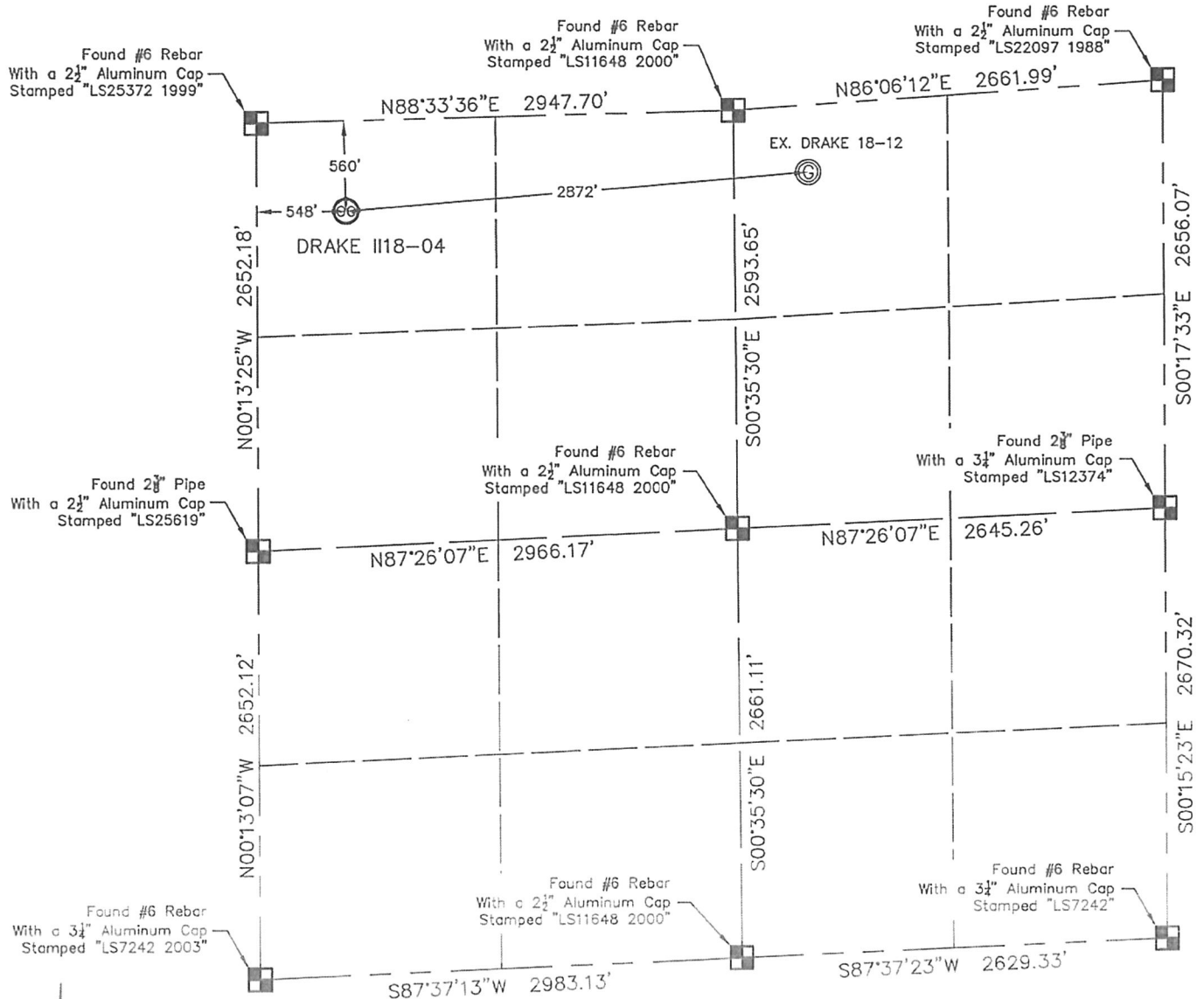


# WELL LOCATION CERTIFICATE

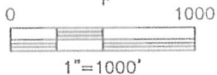
THIS MAP DOES NOT REPRESENT A BOUNDARY SURVEY

SECTION: 18  
TOWNSHIP: 7N  
RANGE: 66W



In accordance with a request from RYAN ANTONIO with NOBLE ENERGY INC., King Surveyors Inc. has determined the surface location of the DRAKE 1118-04 to be 560' from the NORTH line and 548' from the WEST line, as measured at right angles, from the section lines of Section 18, Township 7 North, Range 66 West of the Sixth Principal Meridian, County of Weld, State of Colorado.

I hereby state that this Well Location Certificate was prepared by me, or under my direct supervision, that the fieldwork was completed on 6-16-2010, for and on behalf of Noble Energy Inc. That this is not a Land Survey Plat or an Improvement Survey Plat, and that it is not to be relied upon for establishment of fence, building, or other future improvement lines.



## NOTE:

- 1) Bearings shown are Grid Bearings of the Colorado State Plane Coordinate System, North Zone, North American Datum 1983/2007. The lineal dimensions as contained herein are based upon the "U.S. Survey Foot."
- 2) Ground elevations are based on an observed GPS elevation (NAVD 1988 DATUM).
- 3) NEAREST EXISTING WELL: DRAKE 18-12 2872' EAST
- 4) IMPROVEMENTS: See VISIBLE IMPROVEMENTS exhibit for all visible improvements within 400' of well head.
- 5) SURFACE USE: CROP FIELD

## SURFACE LOCATION

LATITUDE: 40.58005°N  
LONGITUDE: 104.82984°W  
PDOP: 1.5  
ELEV: 5113'  
1/4, 1/4: NW1/4, NW1/4  
NEAREST PROPERTY LINE: 471' NORTH

## NOTE

According to Colorado law, you must commence any legal action based upon any defect in this W.L.C. within three years after you discover such defect. In no event, may any action based upon any defect in this survey be commenced more than ten years after the date of the certificate shown hereon. (13-80-105 C.R.S.)

## LEGEND

- = ALIQUOT MONUMENT AS DESCRIBED
- = CALCULATED POSITION

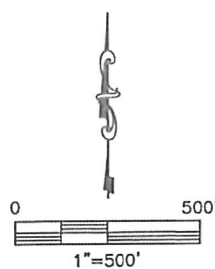
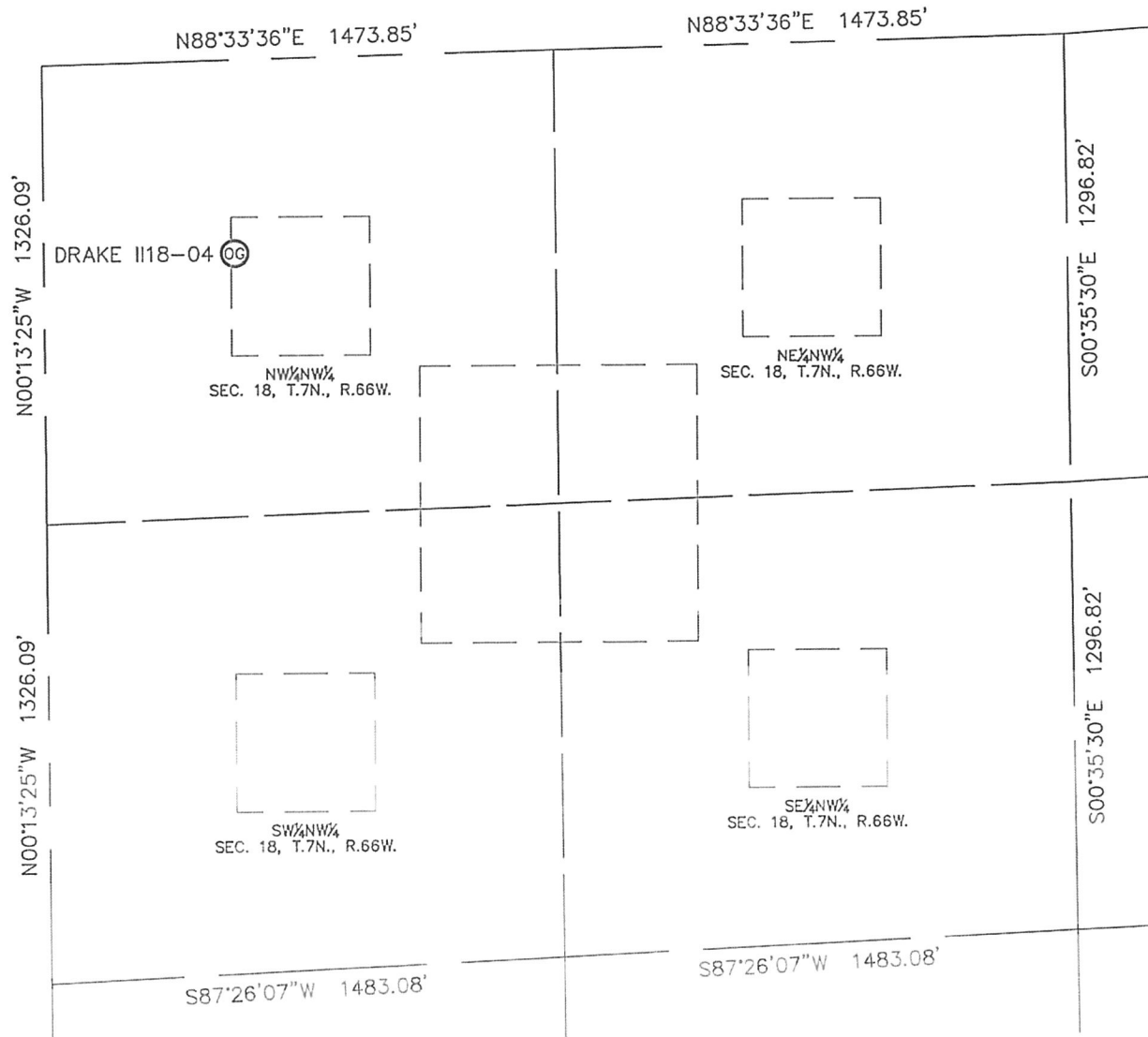
Michael Chgo. Dika On Behalf of King Surveyors, Inc.  
Colorado Licensed Professional Land Surveyor #38106  
PROJECT#: 2010232  
6/18/2010

KING SURVEYORS, INC.

650 E. GARDEN DR. WINDSOR, CO 80550

# SITE SKETCH

SECTION: 18  
TOWNSHIP: 7N  
RANGE: 66W



PROJECT#: 2010232