

ENSIGN

Directional

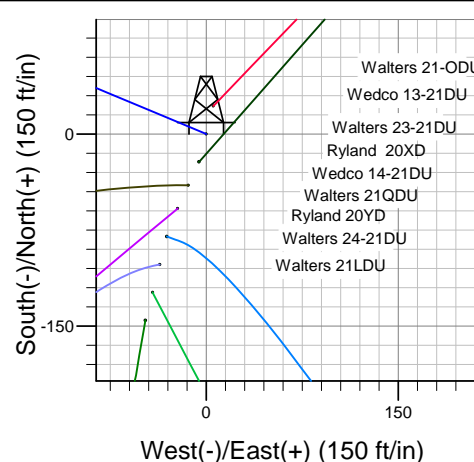
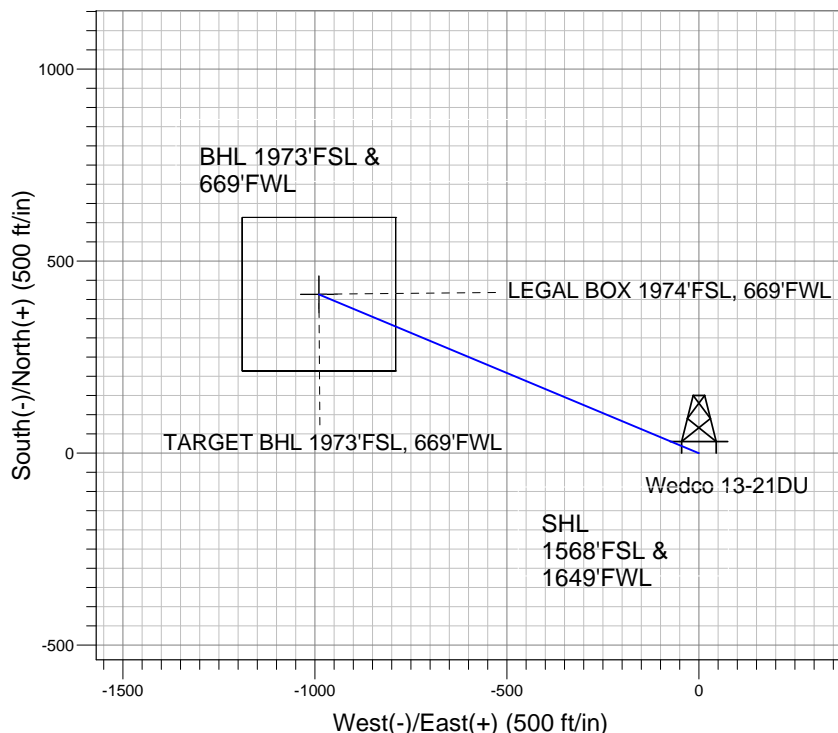
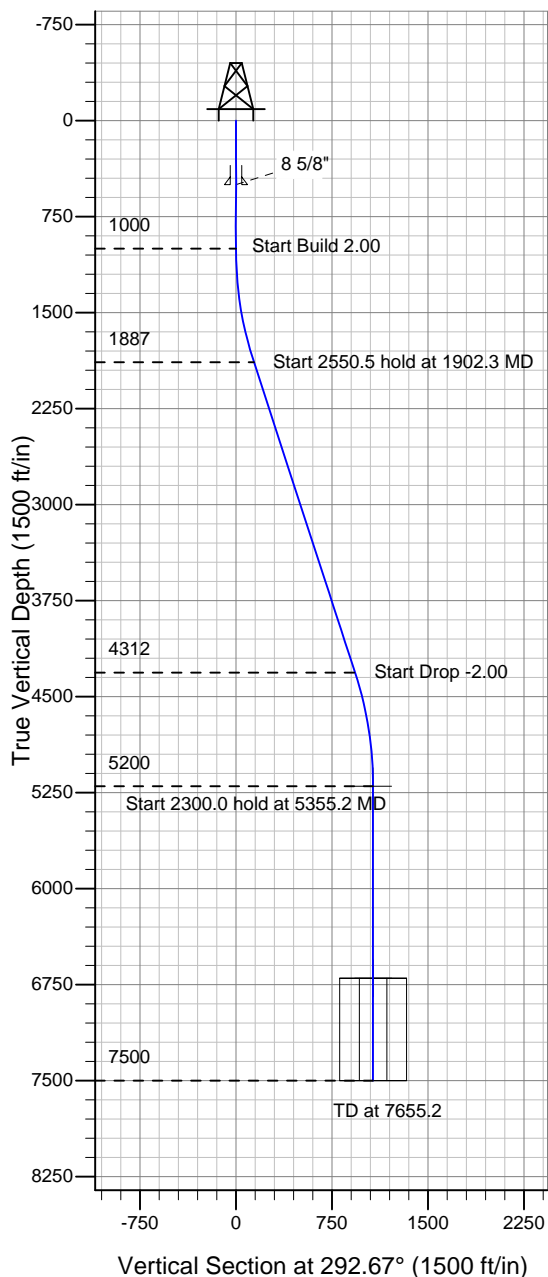
Well Name: **Wedco 13-21DU**

Surface Location: Walters/Wedco/Ryland Pad Sec.21-T4N-R67W
North American Datum 1983 , US State Plane 1983 , Colorado Northern Zone

Ground Elevation: 4940.0

+N/-S	+E/-W	Northing	Easting	Latitude	Longitude	Slot
0.0	0.0	1351036.96	3167485.40	40° 17' 43.584 N	104° 53' 58.416 W	
Original Well Elev WELL @ 4953.0ft (Original Well Elev)						

PETROLEUM DEVELOPMENT CORP Weld County CO



Wedco 13-21DU
Plan #1 (6-4-10)
11:25, June 08 2010



Azimuths to True North
Magnetic North: 9.09°
Magnetic Field
Strength: 53233.7snT
Dip Angle: 67.00°
Date: 12/31/2009
Model: IGRF200510

WELLBORE TARGET DETAILS (LAT/LONG)

Name	TVD	+N/-S	+E/-W	Latitude	Longitude	Shape
TARGET BHL 1973'FSL, 669'FWL	5200.0	413.2	-989.2	40° 17' 47.667 N	104° 54' 11.182 W	Point
LEGAL BOX 1974'FSL, 669'FWL	6700.0	414.2	-989.2	40° 17' 47.677 N	104° 54' 11.182 W	Rectangle (Sides: L400.0 W400.0)

SECTION DETAILS

Sec	MD	Inc	Azi	TVD	+N/-S	+E/-W	DLeg	TFace	VSec	Target
1	0.0	0.00	0.00	0.0	0.0	0.0	0.00	0.00	0.0	
2	1000.0	0.00	0.00	1000.0	0.0	0.0	0.00	0.00	0.0	
3	1902.3	18.05	292.67	1887.5	54.3	-130.0	2.00	292.67	140.9	
4	4452.8	18.05	292.67	4312.5	358.9	-859.1	0.00	0.00	931.1	
5	5355.2	0.00	0.00	5200.0	413.2	-989.2	2.00	180.00	1072.0	TARGET BHL 1973'FSL, 669'FWL
6	7655.2	0.00	0.00	7500.0	413.2	-989.2	0.00	0.00	1072.0	