

T2S, R97W, 6th P.M.

Exxon Mobil Corporation

WELL LOCATION, FREEDOM UNIT 297-28C9, LOCATED AS SHOWN IN THE SE 1/4 NE 1/4 OF SECTION 28, T2S, R97W, 6th P.M., RIO BLANCO COUNTY, COLORADO.

1938 G.L.O. Brass Cap

1938 G.L.O. Brass Cap

1938 G.L.O. Brass Cap

1938 G.L.O. Brass Cap

1938 G.L.O. Brass Cap

1938 G.L.O. Brass Cap

1938 G.L.O. Brass Cap

1938 G.L.O. Brass Cap

N02°00'43"E - 2654.14' (Meas.)

N88°18'52"W - 2657.64' (Meas.)

N88°43'59"W - 2622.73' (Meas.)

N02°02'21"E
2635.59' (Meas.)

Bottom of Hole

**WELL LOCATION:
FREEDOM UNIT 297-28C9**
ELEV. UNGRADED GROUND = 6577.6'

Top of Hole

136'

28

1938 G.L.O. Brass Cap

1938 G.L.O. Brass Cap

1938 G.L.O. Brass Cap

1938 G.L.O. Brass Cap

1938 G.L.O. Brass Cap

1938 G.L.O. Brass Cap

1938 G.L.O. Brass Cap

1938 G.L.O. Brass Cap

1938 G.L.O. Brass Cap

N01°57'59"E - 2655.65' (Meas.)

IMPROVEMENT NOTE:
See addendum to legal plat (sheet 11) for existing improvements within 200' of the proposed well head.

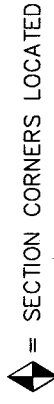
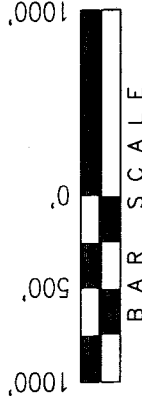
No building, public road, above ground utility or railroad within 200' of the proposed well head.

N02°07'01"E
2634.74' (Meas.)

1938 G.L.O. Brass Cap

N88°57'07"W - 5272.66' (Meas.)

1938 G.L.O. Brass Cap



BAR SCALE

= SECTION CORNERS LOCATED

BASIS OF BEARINGS & BASIS OF ELEVATION

BASIS OF BEARINGS IS A LINE BETWEEN MAGNOLIA & MEYERS TRIANGULATION STATION GRID COORDINATES WHICH IS ASSUMED TO BEAR S82°36'07"E.

BASIS OF ELEVATION IS MAGNOLIA TRIANGULATION STATION LOCATED IN THE NW 1/4 OF SECTION 9, T2S, R96W, 6th P.M. REPORTED FROM THE NATIONAL GEODETIC SURVEY (NAVD 88). ELEVATION IS REPORTED AS BEING 7529 FEET.

NOTES:

1. Well footages are measured at right angles to the Section Lines.
2. Bearings are based on Global Positioning Satellite observations.
3. G.P.S. Operator: D. PETTY, (PDOP) = 3.2

THIS IS TO CERTIFY THAT THE ABOVE IS A TRUE AND CORRECT COPY OF THE ORIGINAL SURVEY MAP, PREPARED FROM FIELD NOTES OF ACTUAL SURVEY MADE BY ME, OR UNDER MY SUPERVISION AND THAT THE SAME IS TRUE AND CORRECT TO THE BEST OF MY KNOWLEDGE AND BELIEF.

30125

REGISTERED LAND SURVEYOR
REGISTRATION No. 30125
STATE OF COLORADO

TRI STATE LAND SURVEYING & CONSULTING
180 NORTH VERNAL AVE. - VERNAL, UTAH 84078
(435) 781-2501

TRI STATE LAND SURVEYING & CONSULTING

180 NORTH VERNAL AVE. - VERNAL, UTAH 84078

(435) 781-2501

SHEET

DATE SURVEYED:
12-28-05

DATE DRAWN:
02-20-06

REVISOR:
06-05-06

SURVEYED BY: D.P.

DRAWN BY: D.COX

SCALE: 1" = 1000'

11

OF 8

FROM SURFACE LOCATION TO NEAREST:

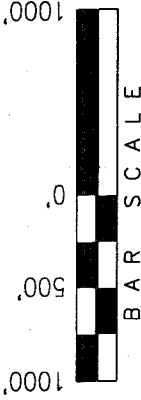
TOWN/COMMUNITY:	NE 19.9 MILES TO MEEKER
UNIT BOUNDARY:	NLY ±7523' TO BOUNDARY
UNIT BOUNDARY:	ELY ±8,043' TO BOUNDARY
LEASE BOUNDARY:	NLY ±2,209' TO BOUNDARY
LEASE BOUNDARY:	ELY ±1,576' TO BOUNDARY
EXISTING WELL:	SELY ±2,438' TO 1 JOHNSON

CO-NORTH NAD 83 (SURFACE LOCATION)	
LATITUDE =	39°50'55.33" (39.848704)
LONGITUDE =	108°16'41.15" (108.278098)
STATE PLANE COORDINATES	
N =	1199951.604
E =	2220106.943
CO-NORTH NAD 27 (SURFACE LOCATION)	
LATITUDE =	39°50'55.43" (39.848731)
LONGITUDE =	108°16'38.84" (108.277456)
STATE PLANE COORDINATES	
N =	199952.687
E =	1220267.030

T2S, R97W, 6th P.M.

Exxon Mobil Corporation

TARGET BOTTOM HOLE, FREEDOM UNIT
297-28C9, LOCATED AS SHOWN IN THE SW
1/4 NW 1/4 (LOT 2) OF SECTION 27, T2S,
R97W, 6th P.M., RIO BLANCO COUNTY,
COLORADO.



SECTION CORNERS LOCATED

BASIS OF BEARINGS & BASIS OF ELEVATION

BASIS OF BEARINGS IS A LINE BETWEEN MAGNOLIA & MEYERS TRIANGULATION
STATION GRID COORDINATES WHICH IS ASSUMED TO BEAR S82°36'07"E.

BASIS OF ELEVATION IS MAGNOLIA TRIANGULATION STATION LOCATED IN THE
NW 1/4 OF SECTION 9, T2S, R96W, 6th P.M. REPORTED FROM THE NATIONAL
GEODETIC SURVEY (NAVD 88). ELEVATION IS REPORTED AS BEING 7529 FEET.

NOTES:

- Well footages are measured at right angles to the
Section Lines.
- Bearings are based on Global Positioning Satellite
observations.

THIS IS TO CERTIFY THAT THE ABOVE IS A TRUE AND CORRECT COPY OF THE RECORD
FROM FIELD NOTES OF ACTUAL SURVEY MADE BY ME OR
UNDER MY SUPERVISION AND THAT THE SAME ARE TRUE AND
AND CORRECT TO THE BEST OF MY KNOWLEDGE AND BELIEF.

30125

REGISTERED LAND SURVEYOR
REGISTRATION NO. 30125
STATE OF COLORADO

TRI STATE LAND SURVEYING & CONSULTING

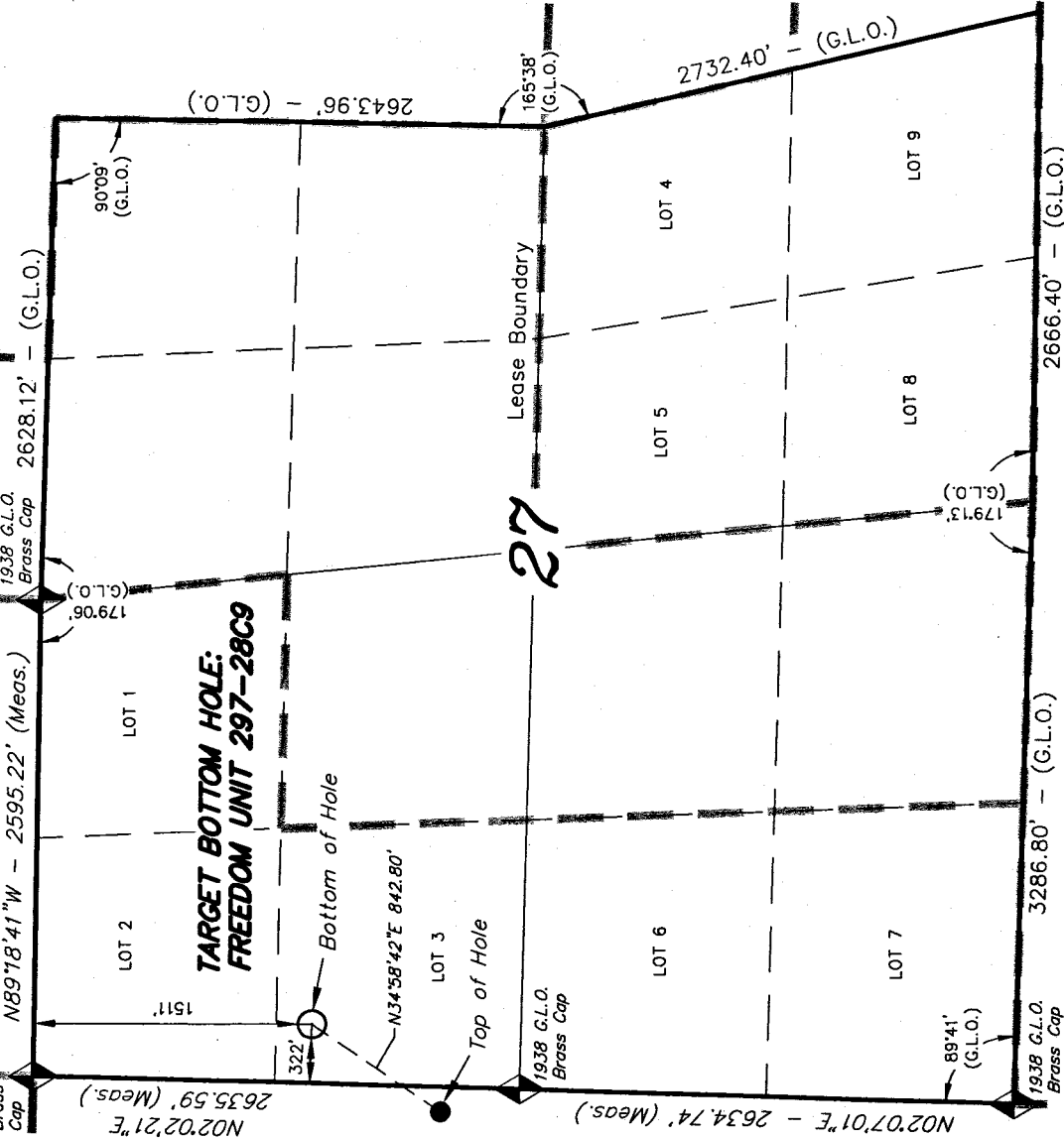
180 NORTH VERNAL AVE. - VERNAL, UTAH 84078
(435) 781-2501

SHEET

SURVEYED BY: D.P.
DRAWN BY: D.COX

SCALE: 1" = 1000'

OF 8



CO-NORTH NAD 83 (BOTTOM HOLE)	FROM TARGET BOTTOM HOLE TO NEAREST:
LATITUDE = 39°51'02.30" (39.850640)	UNIT BOUNDARY: NLY ±6.817' TO BOUNDARY
LONGITUDE = 108°16'35.24" (108.276455)	UNIT BOUNDARY: ELY ±7.572' TO BOUNDARY
STATE PLANE COORDINATES	LEASE BOUNDARY: SLY ±3.765' TO BOUNDARY
N: = 1200641.920 E: = 2220589.921	LEASE BOUNDARY: ELY ±1.073' TO BOUNDARY
CO-NORTH NAD 27 (BOTTOM HOLE)	
LATITUDE = 39°51'02.40" (39.850667)	
LONGITUDE = 108°16'32.93" (108.275813)	
STATE PLANE COORDINATES	
N: = 200643.000 E: = 1220750.000	