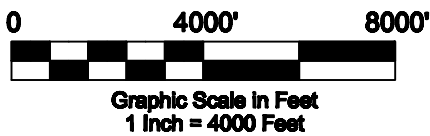
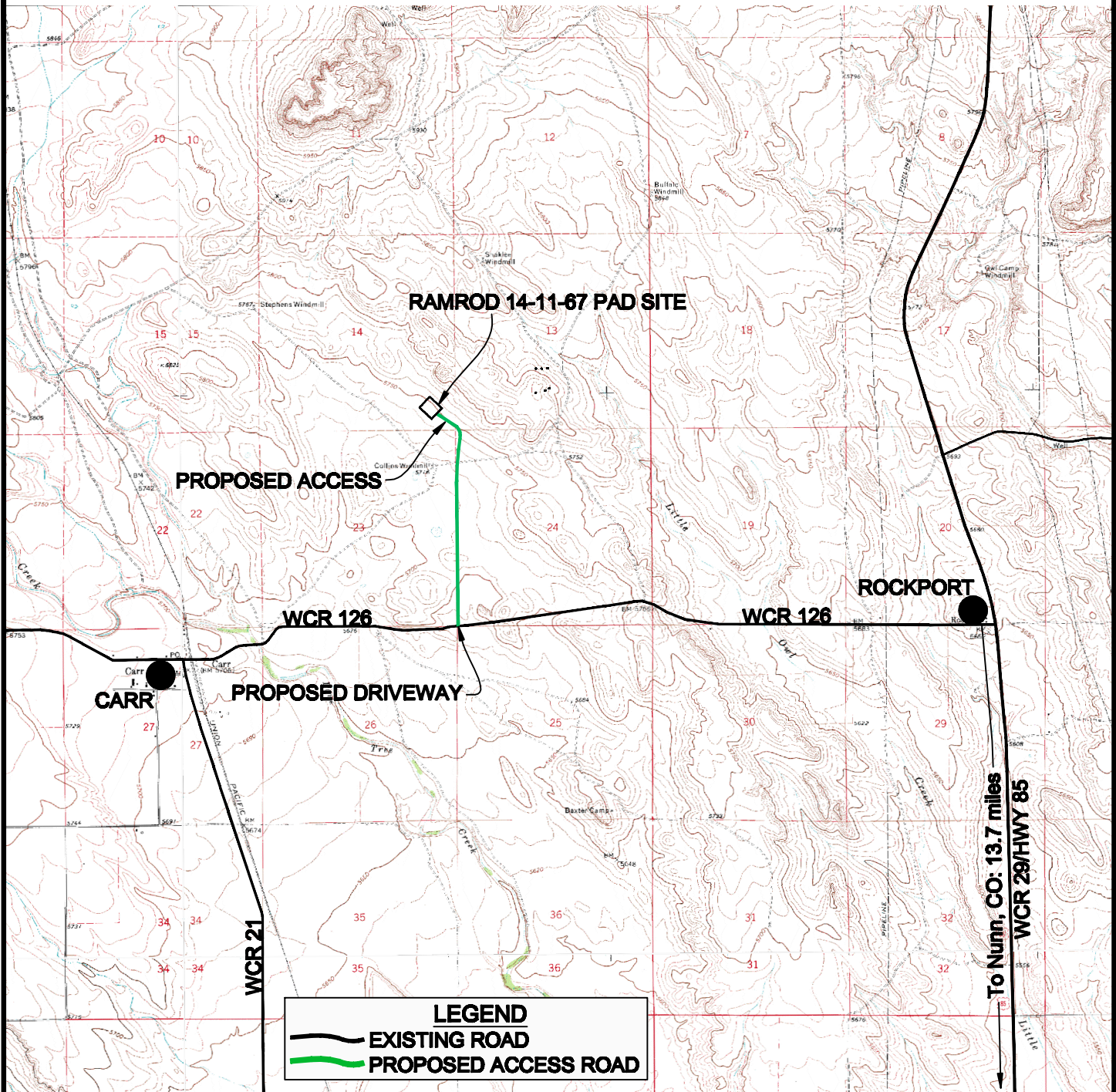


ACCESS ROAD MAP



DRIVING DIRECTIONS:

From Nunn, CO, travel North on Hwy 85 approximately 13.7 miles
Left on WCR 126, travel West approximately 2.8 miles
Right on Proposed Access Road, travel North approximately 6,006' (1.14 mi) onto RAMROD 14-11-67 pad



WESTERN LAND SERVICES

Sheridan, WY 82801 (307)673-1817

DP: L... \Slawson\Permitting_Booklets\Outlaw... Date: 5/07/2010

SLAWSON EXPLORATION COMPANY, INC
RAMROD 14-11-67

SL: SE1/4 SE1/4 SECTION 14, T11N R67W
BL: NW1/4 NE1/4, S. 14, T11N R67W
6TH PM, WELD COUNTY, COLORADO