

LOCATION DRAWING
BOXCAR 12-11-67

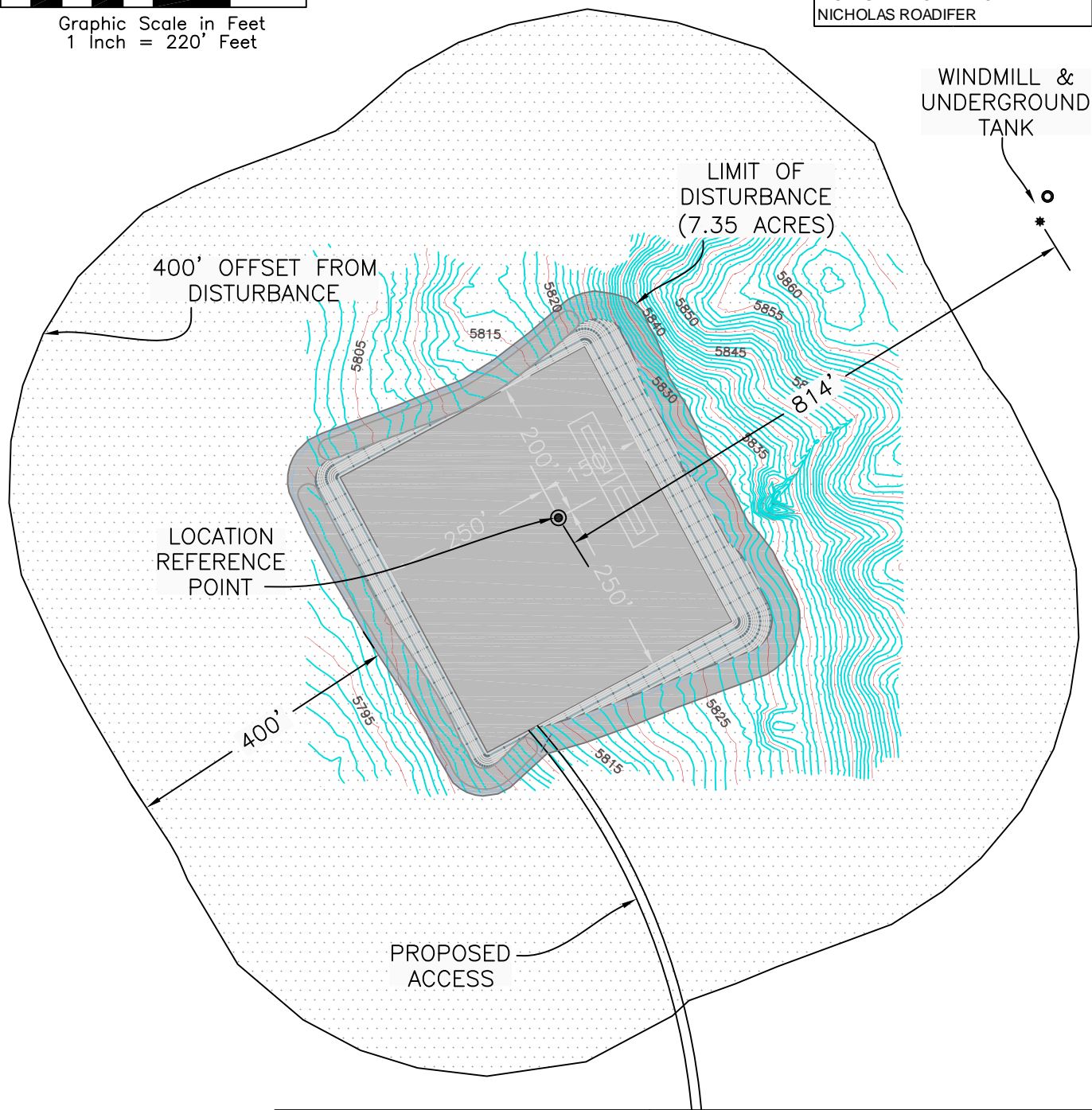
THERE ARE NO APPARENT
IMPROVEMENTS WITHIN
400' OF THE DISTURBED
PERIMETER

BOXCAR 12-11-67 WELLHEAD
LATITUDE: 40.930276
LONGITUDE: -104.832148
FOOTAGE: 605' FSL 705' FEL
GROUND ELEV: 5813.5'
PDOP: 2.0
INSTRUMENT OPERATOR: NICHOLAS ROADIFER

VEGETATION:
GRASSLAND
SURFACE USE:
RANGELAND



Graphic Scale in Feet
1 Inch = 220' Feet



Revised: 6/22/2010

WESTERN LAND SERVICES
Sheridan, WY 82801 (307)673-1817

DP: L:...Slawson\Permitting_Booklets\Boxcar...Date: 6/10/2010

SLAWSON EXPLORATION COMPANY, INC
BOXCAR 12-11-67

SL: SE1/4 SE1/4, SECTION 12, T11N R67W
BL: NW1/4 NE1/4 SECTION 12, T11N R67W
6TH PM, WELD COUNTY, COLORADO