



Weatherford®

Drilling Services

Proposal

BERRY PETROLEUM CO.

SCHOOL HOUSE POINT OM13A ^LM15 ^b692

GARFIELD COUNTY, COLORADO

WELL FILE: **PLAN # 1**

AUGUST 16, 2007

Weatherford International Ltd.

2690 Oil Drive
Casper Wyoming 82604 USA
+1.307-265-1413 Main
+1.307-235-3958 Fax
www.weatherford.com



Berry Petroleum Company

SCHOOL HOUSE POINT OM13A M15 696
1727' FSL, 1250' FWL
SECTION 15-T6S-R96W
GARFIELD COUNTY, CO

SITE DETAILS

SCHOOL HOUSE POINT M15 PAD
SECTION 15-T6S-R96W

Site Centre Latitude: 39°31'14.760N
 Longitude: 108°06'00.640W

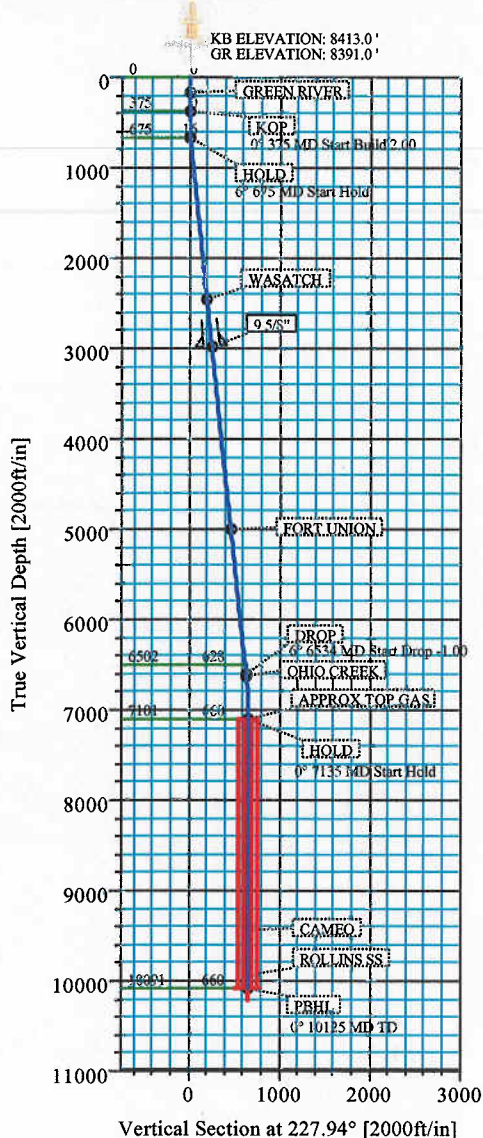
Ground Level: 8391.00
 Positional Uncertainty: 0.00
 Convergence: -1.64

FIELD DETAILS

GARFIELD COUNTY (NAD 83)
COLORADO

Geodetic System: US State Plane Coordinate System 1983
 Ellipsoid: GRS 1980
 Zone: Colorado, Central Zone
 Magnetic Model: bggm2006

System Datum: Mean Sea Level
 Local North: True North

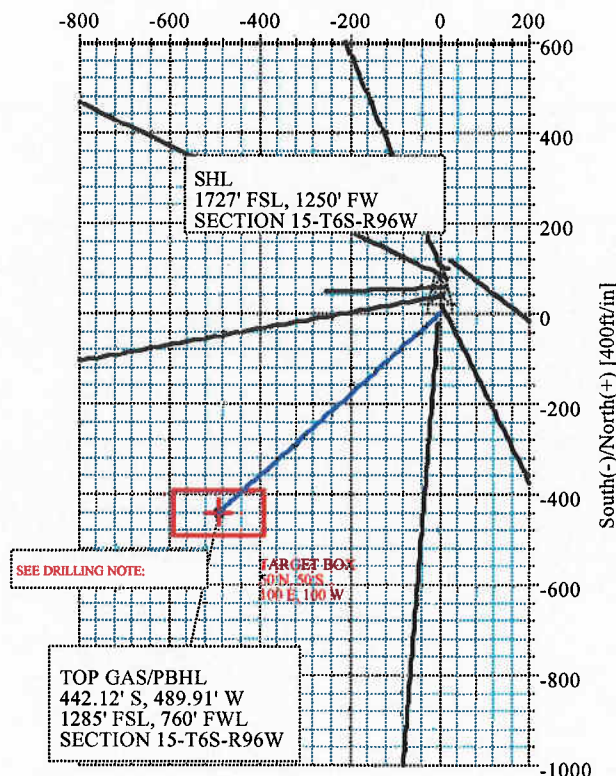


Azimuths to True North
Magnetic North: 10.93°

Magnetic Field
Strength: 52691nT
Dip Angle: 65.88°
Date: 8/15/2007
Model: bggm2006

TOTAL CORRECTION TO TRUE NORTH 10.93°

West(-)/East(+) [400ft/in]



TOP GAS/PBHL
442.12' S, 489.91' W
1285' FSL, 760' FWL
SECTION 15-T6S-R96W

Plan: Plan #1 (OM13A M15 696/1)

Created By: ROBERT SCOTT

Date: 8/16/2007



Weatherford

SECTION DETAILS

Sec	MD	Inc	Azi	TVD	+N/-S	+E/-W	DLeg	TFace	VSec	Target
1	0.00	0.00	227.94	0.00	0.00	0.00	0.00	0.00	0.00	
2	375.00	0.00	227.94	375.00	0.00	0.00	0.00	0.00	0.00	
3	675.16	6.00	227.94	674.61	-10.53	-11.66	2.00	227.94	15.71	
4	6534.46	6.00	227.94	6501.78	-421.07	-466.59	0.00	0.00	628.50	
5	7134.78	0.00	227.94	7101.00	-442.12	-489.91	1.00	180.00	659.92	
6	10124.78	0.00	227.94	10091.00	-442.12	-489.91	0.00	227.94	659.92	PBHL_OM13A

WELL DETAILS

Name	+N/-S	+E/-W	Northing	Easting	Latitude	Longitude	Slot
OM13A M15 696	-118.01	-23.98	1624950.34	2266564.14	39°31'13.594N	108°06'00.946W	N/A

TARGET DETAILS

Name	TVD	+N/-S	+E/-W	Northing	Easting	Shape
PBHL	10629.00	-147.00	-731.72	1632657.89	2268634.60	Rectangle (100x200)

FORMATION TOP DETAILS

No.	TVDPath	MDPath	Formation
1	173.00	173.00	GREEN RIVER
2	2453.00	2463.36	WASATCH
3	5008.00	5032.44	FORT UNION
4	6618.00	6651.20	OHIO CREEK
5	7101.00	7134.78	APPROX TOP GAS
6	9441.00	9474.78	CAMEO
7	9941.00	9974.78	ROLLINS SS

-DRILLING NOTE-
TO ACCOUNT FOR THE 240° DRIFT IN AZIMUTH, AIM
FOR THE NE SIDE OF PBHL, AND
BE IN THE TARGET WINDOW BY THE TOP GAS AND STAY
WITHIN THE WINDOW TO TD. DO NOT GO OUTSIDE THE
WINDOW.

Weatherford International, Ltd.

PLAN REPORT

Company: BERRY PETROLEUM COMPANY	Date: 8/16/2007	Time: 11:09:31	Page: 1
Field: GARFIELD COUNTY (NAD 83)	Co-ordinate(NE) Reference: Well: OM13A M15 696, True North		
Site: SCHOOL HOUSE POINT M15 PAD	Vertical (TVD) Reference: SITE 8413.0		
Well: OM13A M15 696	Section (VS) Reference: Well (0.00N,0.00E,227.94Azi)		
Wellpath: 1	Survey Calculation Method: Minimum Curvature	Db: Sybase	

Field: GARFIELD COUNTY (NAD 83)
COLORADO

Map System: US State Plane Coordinate System 1983
Geo Datum: GRS 1980
Sys Datum: Mean Sea Level

Map Zone: Colorado, Central Zone
Coordinate System: Well Centre
Geomagnetic Model: bggm2006

Site: SCHOOL HOUSE POINT M15 PAD
SECTION 15-T6S-R96W

Site Position:	Northing: 1625067.62 ft	Latitude: 39 31 14.760 N
From: Geographic	Easting: 2266591.48 ft	Longitude: 108 6 0.640 W
Position Uncertainty: 0.00 ft		North Reference: True
Ground Level: 8391.00 ft		Grid Convergence: -1.64 deg

Well: OM13A M15 696	Slot Name:
1727' FSL, 1250' FWL	
Well Position: +N/-S -118.01 ft	Northing: 1624950.34 ft
+E/-W -23.98 ft	Easting: 2266564.14 ft
Position Uncertainty: 0.00 ft	Latitude: 39 31 13.594 N
	Longitude: 108 6 0.946 W

Wellpath: 1	Drilled From: Surface
Current Datum: SITE	Tie-on Depth: 0.00 ft
Magnetic Data: 8/15/2007	Above System Datum: Mean Sea Level
Field Strength: 52691 nT	Declination: 10.93 deg
Vertical Section: Depth From (TVD)	Mag Dip Angle: 65.88 deg
ft	+N/-S
	+E/-W
	Direction
	deg
0.00	0.00
0.00	0.00
0.00	227.94

Plan: Plan #1	Date Composed: 8/15/2007
Principal: Yes	Version: 1
	Tied-to: From Surface

Plan Section Information

MD ft	Incl deg	Azlm deg	TVD ft	+N/-S ft	+E/-W ft	DLS deg/100ft	Build deg/100ft	Turn deg/100ft	TFO deg	Target
0.00	0.00	227.94	0.00	0.00	0.00	0.00	0.00	0.00	0.00	
375.00	0.00	227.94	375.00	0.00	0.00	0.00	0.00	0.00	0.00	
675.16	6.00	227.94	674.61	-10.53	-11.66	2.00	2.00	0.00	227.94	
6534.46	6.00	227.94	6501.78	-421.07	-466.59	0.00	0.00	0.00	0.00	
7134.78	0.00	227.94	7101.00	-442.12	-489.91	1.00	-1.00	0.00	180.00	
10124.78	0.00	227.94	10091.00	-442.12	-489.91	0.00	0.00	0.00	227.94	PBHL_OM13A

Survey

MD ft	Incl deg	Azlm deg	TVD ft	N/S ft	E/W ft	VS ft	DLS deg/100ft	Build deg/100ft	Turn deg/100ft	Comment
375.00	0.00	227.94	375.00	0.00	0.00	0.00	0.00	0.00	0.00	KOP
475.00	2.00	227.94	474.98	-1.17	-1.30	1.75	2.00	2.00	0.00	
575.00	4.00	227.94	574.84	-4.68	-5.18	6.98	2.00	2.00	0.00	
675.00	6.00	227.94	674.45	-10.51	-11.65	15.69	2.00	2.00	0.00	
675.16	6.00	227.94	674.61	-10.53	-11.66	15.71	1.98	1.98	0.00	HOLD
775.00	6.00	227.94	773.90	-17.52	-19.41	26.15	0.00	0.00	0.00	
875.00	6.00	227.94	873.36	-24.53	-27.18	36.61	0.00	0.00	0.00	
975.00	6.00	227.94	972.81	-31.53	-34.94	47.07	0.00	0.00	0.00	
1075.00	6.00	227.94	1072.26	-38.54	-42.71	57.53	0.00	0.00	0.00	
1175.00	6.00	227.94	1171.71	-45.55	-50.47	67.99	0.00	0.00	0.00	
1275.00	6.00	227.94	1271.16	-52.55	-58.24	78.44	0.00	0.00	0.00	
1375.00	6.00	227.94	1370.61	-59.56	-66.00	88.90	0.00	0.00	0.00	
1475.00	6.00	227.94	1470.06	-66.57	-73.76	99.36	0.00	0.00	0.00	
1575.00	6.00	227.94	1569.52	-73.58	-81.53	109.82	0.00	0.00	0.00	
1675.00	6.00	227.94	1668.97	-80.58	-89.29	120.28	0.00	0.00	0.00	

Weatherford International, Ltd.

PLAN REPORT

Company: BERRY PETROLEUM COMPANY Field: GARFIELD COUNTY (NAD 83) Site: SCHOOL HOUSE POINT M15 PAD Well: OM13A M15 696 Wellpath: 1	Date: 8/16/2007 Time: 11:09:31 Page: 2 Co-ordinate(NE) Reference: Well: OM13A M15 696, True North Vertical (TVD) Reference: SITE 8413.0 Section (VS) Reference: Well (0.00N,0.00E,227.94Azi) Survey Calculation Method: Minimum Curvature Db: Sybase
--	--

Survey

MD ft	Incl deg	Azlm deg	TVD ft	N/S ft	E/W ft	VS ft	DLS deg/100ft	Build deg/100ft	Turn deg/100ft	Comment
1775.00	6.00	227.94	1768.42	-87.59	-97.06	130.74	0.00	0.00	0.00	
1875.00	6.00	227.94	1867.87	-94.60	-104.82	141.19	0.00	0.00	0.00	
1975.00	6.00	227.94	1967.32	-101.60	-112.58	151.65	0.00	0.00	0.00	
2075.00	6.00	227.94	2066.77	-108.61	-120.35	162.11	0.00	0.00	0.00	
2175.00	6.00	227.94	2166.23	-115.62	-128.11	172.57	0.00	0.00	0.00	
2275.00	6.00	227.94	2265.68	-122.62	-135.88	183.03	0.00	0.00	0.00	
2375.00	6.00	227.94	2365.13	-129.63	-143.64	193.49	0.00	0.00	0.00	
2463.36	6.00	227.94	2453.00	-135.82	-150.50	202.73	0.00	0.00	0.00	WASATCH
2475.00	6.00	227.94	2464.58	-136.64	-151.41	203.94	0.00	0.00	0.00	
2575.00	6.00	227.94	2564.03	-143.64	-159.17	214.40	0.00	0.00	0.00	
2675.00	6.00	227.94	2663.48	-150.65	-166.93	224.86	0.00	0.00	0.00	
2775.00	6.00	227.94	2762.94	-157.66	-174.70	235.32	0.00	0.00	0.00	
2875.00	6.00	227.94	2862.39	-164.66	-182.46	245.78	0.00	0.00	0.00	
2975.00	6.00	227.94	2961.84	-171.67	-190.23	256.24	0.00	0.00	0.00	
3000.00	6.00	227.94	2986.70	-173.42	-192.17	258.85	0.00	0.00	0.00	9 5/8"
3075.00	6.00	227.94	3061.29	-178.68	-197.99	266.69	0.00	0.00	0.00	
3175.00	6.00	227.94	3160.74	-185.68	-205.75	277.15	0.00	0.00	0.00	
3275.00	6.00	227.94	3260.19	-192.69	-213.52	287.61	0.00	0.00	0.00	
3375.00	6.00	227.94	3359.65	-199.70	-221.28	298.07	0.00	0.00	0.00	
3475.00	6.00	227.94	3459.10	-206.70	-229.05	308.53	0.00	0.00	0.00	
3575.00	6.00	227.94	3558.55	-213.71	-236.81	318.99	0.00	0.00	0.00	
3675.00	6.00	227.94	3658.00	-220.72	-244.58	329.44	0.00	0.00	0.00	
3775.00	6.00	227.94	3757.45	-227.72	-252.34	339.90	0.00	0.00	0.00	
3875.00	6.00	227.94	3856.90	-234.73	-260.10	350.36	0.00	0.00	0.00	
3975.00	6.00	227.94	3956.36	-241.74	-267.87	360.82	0.00	0.00	0.00	
4075.00	6.00	227.94	4055.81	-248.74	-275.63	371.28	0.00	0.00	0.00	
4175.00	6.00	227.94	4155.26	-255.75	-283.40	381.74	0.00	0.00	0.00	
4275.00	6.00	227.94	4254.71	-262.76	-291.16	392.19	0.00	0.00	0.00	
4375.00	6.00	227.94	4354.16	-269.76	-298.92	402.65	0.00	0.00	0.00	
4475.00	6.00	227.94	4453.61	-276.77	-306.69	413.11	0.00	0.00	0.00	
4575.00	6.00	227.94	4553.06	-283.78	-314.45	423.57	0.00	0.00	0.00	
4675.00	6.00	227.94	4652.52	-290.78	-322.22	434.03	0.00	0.00	0.00	
4775.00	6.00	227.94	4751.97	-297.79	-329.98	444.49	0.00	0.00	0.00	
4875.00	6.00	227.94	4851.42	-304.80	-337.75	454.94	0.00	0.00	0.00	
4975.00	6.00	227.94	4950.87	-311.80	-345.51	465.40	0.00	0.00	0.00	
5032.44	6.00	227.94	5008.00	-315.83	-349.97	471.41	0.00	0.00	0.00	FORT UNION
5075.00	6.00	227.94	5050.32	-318.81	-353.27	475.86	0.00	0.00	0.00	
5175.00	6.00	227.94	5149.77	-325.82	-361.04	486.32	0.00	0.00	0.00	
5275.00	6.00	227.94	5249.23	-332.83	-368.80	496.78	0.00	0.00	0.00	
5375.00	6.00	227.94	5348.68	-339.83	-376.57	507.24	0.00	0.00	0.00	
5475.00	6.00	227.94	5448.13	-346.84	-384.33	517.69	0.00	0.00	0.00	
5575.00	6.00	227.94	5547.58	-353.85	-392.09	528.15	0.00	0.00	0.00	
5675.00	6.00	227.94	5647.03	-360.85	-399.86	538.61	0.00	0.00	0.00	
5775.00	6.00	227.94	5746.48	-367.86	-407.62	549.07	0.00	0.00	0.00	
5875.00	6.00	227.94	5845.94	-374.87	-415.39	559.53	0.00	0.00	0.00	
5975.00	6.00	227.94	5945.39	-381.87	-423.15	569.99	0.00	0.00	0.00	
6075.00	6.00	227.94	6044.84	-388.88	-430.92	580.44	0.00	0.00	0.00	
6175.00	6.00	227.94	6144.29	-395.89	-438.68	590.90	0.00	0.00	0.00	
6275.00	6.00	227.94	6243.74	-402.89	-446.44	601.36	0.00	0.00	0.00	
6375.00	6.00	227.94	6343.19	-409.90	-454.21	611.82	0.00	0.00	0.00	
6475.00	6.00	227.94	6442.65	-416.91	-461.97	622.28	0.00	0.00	0.00	
6534.46	6.00	227.94	6501.78	-421.07	-466.59	628.50	0.00	0.00	0.00	
6575.00	5.60	227.94	6542.11	-423.82	-469.63	632.59	1.00	-1.00	0.00	

Weatherford International, Ltd.

PLAN REPORT

Company: BERRY PETROLEUM COMPANY Field: GARFIELD COUNTY (NAD 83) Site: SCHOOL HOUSE POINT M15 PAD Well: OM13A M15 696 Wellpath: 1	Date: 8/16/2007 Co-ordinate(NE) Reference: Well: OM13A M15 696, True North Vertical (TVD) Reference: SITE 8413.0 Section (VS) Reference: Well (0.00N,0.00E,227.94Azi) Survey Calculation Method: Minimum Curvature Db: Sybase
--	---

Survey

MD ft	Incl deg	Azim deg	TVD ft	N/S ft	E/W ft	VS ft	DLS deg/100ft	Bulld deg/100ft	Turn deg/100ft	Comment
6634.00	5.01	227.94	6600.86	-427.47	-473.68	638.05	1.00	-1.00	0.00	DROP OHIO CREEK
6651.20	4.84	227.94	6618.00	-428.46	-474.77	639.52	1.00	-1.00	0.00	
6675.00	4.60	227.94	6641.71	-429.77	-476.23	641.48	1.00	-1.00	0.00	
6775.00	3.60	227.94	6741.46	-434.56	-481.53	648.62	1.00	-1.00	0.00	
6875.00	2.60	227.94	6841.31	-438.18	-485.54	654.03	1.00	-1.00	0.00	
6975.00	1.60	227.94	6941.24	-440.63	-488.26	657.69	1.00	-1.00	0.00	
7075.00	0.60	227.94	7041.22	-441.91	-489.68	659.60	1.00	-1.00	0.00	
7134.78	0.00	227.94	7101.00	-442.12	-489.91	659.92	1.00	-1.00	0.00	
7175.00	0.00	227.94	7141.22	-442.12	-489.91	659.92	0.00	0.00	0.00	
7275.00	0.00	227.94	7241.22	-442.12	-489.91	659.92	0.00	0.00	0.00	APPROX TOP GAS
7375.00	0.00	227.94	7341.22	-442.12	-489.91	659.92	0.00	0.00	0.00	
7475.00	0.00	227.94	7441.22	-442.12	-489.91	659.92	0.00	0.00	0.00	
7575.00	0.00	227.94	7541.22	-442.12	-489.91	659.92	0.00	0.00	0.00	
7675.00	0.00	227.94	7641.22	-442.12	-489.91	659.92	0.00	0.00	0.00	
7775.00	0.00	227.94	7741.22	-442.12	-489.91	659.92	0.00	0.00	0.00	
7875.00	0.00	227.94	7841.22	-442.12	-489.91	659.92	0.00	0.00	0.00	
7975.00	0.00	227.94	7941.22	-442.12	-489.91	659.92	0.00	0.00	0.00	
8075.00	0.00	227.94	8041.22	-442.12	-489.91	659.92	0.00	0.00	0.00	
8175.00	0.00	227.94	8141.22	-442.12	-489.91	659.92	0.00	0.00	0.00	
8275.00	0.00	227.94	8241.22	-442.12	-489.91	659.92	0.00	0.00	0.00	
8375.00	0.00	227.94	8341.22	-442.12	-489.91	659.92	0.00	0.00	0.00	
8475.00	0.00	227.94	8441.22	-442.12	-489.91	659.92	0.00	0.00	0.00	
8575.00	0.00	227.94	8541.22	-442.12	-489.91	659.92	0.00	0.00	0.00	
8675.00	0.00	227.94	8641.22	-442.12	-489.91	659.92	0.00	0.00	0.00	
8775.00	0.00	227.94	8741.22	-442.12	-489.91	659.92	0.00	0.00	0.00	
8875.00	0.00	227.94	8841.22	-442.12	-489.91	659.92	0.00	0.00	0.00	
8975.00	0.00	227.94	8941.22	-442.12	-489.91	659.92	0.00	0.00	0.00	
9075.00	0.00	227.94	9041.22	-442.12	-489.91	659.92	0.00	0.00	0.00	
9175.00	0.00	227.94	9141.22	-442.12	-489.91	659.92	0.00	0.00	0.00	
9275.00	0.00	227.94	9241.22	-442.12	-489.91	659.92	0.00	0.00	0.00	
9375.00	0.00	227.94	9341.22	-442.12	-489.91	659.92	0.00	0.00	0.00	
9474.78	0.00	227.94	9441.00	-442.12	-489.91	659.92	0.00	0.00	0.00	CAMEO
9475.00	0.00	227.94	9441.22	-442.12	-489.91	659.92	0.00	0.00	0.00	
9575.00	0.00	227.94	9541.22	-442.12	-489.91	659.92	0.00	0.00	0.00	
9675.00	0.00	227.94	9641.22	-442.12	-489.91	659.92	0.00	0.00	0.00	
9775.00	0.00	227.94	9741.22	-442.12	-489.91	659.92	0.00	0.00	0.00	
9875.00	0.00	227.94	9841.22	-442.12	-489.91	659.92	0.00	0.00	0.00	
9974.78	0.00	227.94	9941.00	-442.12	-489.91	659.92	0.00	0.00	0.00	ROLLINS SS
9975.00	0.00	227.94	9941.22	-442.12	-489.91	659.92	0.00	0.00	0.00	
10075.00	0.00	227.94	10041.22	-442.12	-489.91	659.92	0.00	0.00	0.00	
10124.78	0.00	227.94	10091.00	-442.12	-489.91	659.92	0.00	0.00	0.00	PBHL_OM13A

Annotation

MD ft	TVD ft	
375.00	375.00	KOP
675.16	674.61	HOLD
6634.00	6600.86	DROP
7134.78	7101.00	HOLD
10124.78	10091.00	PBHL

Weatherford International, Ltd.

PLAN REPORT

Company: BERRY PETROLEUM COMPANY
Field: GARFIELD COUNTY (NAD 83)
Site: SCHOOL HOUSE POINT M15 PAD
Well: OM13A M15 696
Wellpath: 1

Date: 8/16/2007 Time: 11:09:31 Page: 4
Co-ordinate(NE) Reference: Well: OM13A M15 696, True North
Vertical (TVD) Reference: SITE 8413.0
Section (VS) Reference: Well (0.00N,0.00E,227.94Azi)
Survey Calculation Method: Minimum Curvature Db: Sybase

Targets

Name	Description Dip.	Dir.	TVD ft	+N/-S ft	+E/-W ft	Map Northing ft	Map Easting ft	<--- Latitude ---> Deg Min Sec	<--- Longitude ---> Deg Min Sec
PBHL_OM13A			10091.00	-442.12	-489.91	1624522.42	2266061.77	39 31 9.224 N	108 6 7.198 W
	-Rectangle (100x200)								
	-Plan hit target								

Weatherford International, Ltd.

Anticollision Report

Company:	BERRY PETROLEUM COMPANY	Date:	8/16/2007	Time:	11:04:36	Page:	1
Field:	GARFIELD COUNTY (NAD 83)	Co-ordinate(NE) Reference:	Well: OM13A M15 696, True North				
Reference Site:	SCHOOL HOUSE POINT M15 PAD	Vertical (TVD) Reference:	SITE 8413.0				
Reference Well:	OM13A M15 696						
Reference Wellpath:	1		Db: Sybase				

NO GLOBAL SCAN: Using user defined selection & scan criteria
Interpolation Method: MD **Interval:** 100.00 ft
Depth Range: 0.00 to 10124.78 ft
Maximum Radius: 10000.00 ft

Reference: Plan: Plan #1
Error Model: ISCWSA Ellipse
Scan Method: Closest Approach 3D
Error Surface: Ellipse

Plan: Plan #1	Date Composed: 8/15/2007
Principal: Yes	Version: 1
	Tied-to: From Surface

Summary

Site	Offset Wellpath Well	Wellpath	Reference MD ft	Offset MD ft	Ctr-Ctr Distance ft	Edge Distance ft	Separation Factor	Warning
SCHOOL HOUSE POINT M15 696	1 V0 Plan: Plan #1 V1		600.00	597.36	28.63	26.20	11.77	
SCHOOL HOUSE POINT M15 696	1 V0 Plan: Plan #1 V1		600.00	600.74	23.94	21.50	9.83	

Site: SCHOOL HOUSE POINT M15 PAD
Well: OM13D M15 696
Wellpath: 1 V0 Plan: Plan #1 V1

Inter-Site Error: 0.00 ft

Reference MD ft	TVD ft	Offset MD ft	TVD ft	Semi-Major Axis Ref ft	Offset ft	TFO-HS deg	Offset Location North ft	East ft	Ctr-Ctr Distance ft	Edge Distance ft	Separation Factor	Warning
0.00	0.00	0.00	0.00	0.00	0.00	191.88	-19.00	-4.00	19.41			No Data
100.00	100.00	100.00	100.00	0.09	0.09	191.88	-19.00	-4.00	19.41	19.24	110.73	
200.00	200.00	200.00	200.00	0.31	0.31	191.88	-19.00	-4.00	19.41	18.79	31.07	
300.00	300.00	300.00	300.00	0.54	0.54	191.88	-19.00	-4.00	19.41	18.34	18.07	
400.00	400.00	399.30	399.28	0.76	0.76	323.18	-20.71	-4.13	21.05	19.52	13.81	
500.00	499.96	498.44	498.29	0.99	1.00	318.13	-25.85	-4.54	24.21	22.23	12.25	
600.00	599.77	597.36	596.83	1.23	1.25	309.63	-34.37	-5.21	28.63	26.20	11.77	
700.00	699.31	695.95	694.69	1.49	1.53	300.27	-46.23	-6.15	35.08	32.16	12.02	
800.00	798.77	794.09	791.65	1.76	1.85	294.42	-61.37	-7.35	44.93	41.49	13.07	
900.00	898.22	893.07	889.06	2.04	2.21	291.67	-78.83	-8.74	57.11	53.12	14.33	
1000.00	997.67	992.29	986.70	2.33	2.58	289.89	-96.39	-10.13	69.42	64.87	15.25	
1100.00	1097.12	1091.51	1084.35	2.62	2.96	288.66	-113.96	-11.52	81.77	76.65	15.95	
1200.00	1196.57	1190.73	1181.99	2.91	3.34	287.74	-131.52	-12.91	94.16	88.44	16.48	
1300.00	1296.02	1289.95	1279.63	3.21	3.73	287.04	-149.08	-14.30	106.56	100.26	16.91	
1400.00	1395.48	1389.17	1377.28	3.51	4.12	286.49	-166.64	-15.69	118.97	112.08	17.26	
1500.00	1494.93	1488.39	1474.92	3.80	4.52	286.04	-184.20	-17.08	131.40	123.90	17.54	
1600.00	1594.38	1587.61	1572.57	4.10	4.91	285.67	-201.76	-18.47	143.82	135.73	17.78	
1700.00	1693.83	1686.83	1670.21	4.40	5.31	285.35	-219.32	-19.86	156.26	147.57	17.98	
1800.00	1793.28	1786.05	1767.86	4.70	5.71	285.09	-236.88	-21.26	168.70	159.40	18.15	
1900.00	1892.73	1885.27	1865.50	5.00	6.10	284.86	-254.44	-22.65	181.14	171.24	18.30	
2000.00	1992.19	1984.49	1963.14	5.30	6.50	284.66	-272.00	-24.04	193.58	183.08	18.44	
2100.00	2091.64	2083.71	2060.79	5.60	6.90	284.48	-289.56	-25.43	206.03	194.92	18.55	
2200.00	2191.09	2182.93	2158.43	5.90	7.30	284.32	-307.12	-26.82	218.48	206.76	18.65	
2300.00	2290.54	2282.15	2256.08	6.20	7.70	284.18	-324.69	-28.21	230.92	218.61	18.75	
2400.00	2389.99	2381.38	2353.72	6.50	8.10	284.06	-342.25	-29.60	243.37	230.45	18.83	
2500.00	2489.44	2480.60	2451.37	6.80	8.50	283.95	-359.81	-30.99	255.83	242.29	18.90	
2600.00	2588.90	2579.82	2549.01	7.10	8.90	283.84	-377.37	-32.38	268.28	254.14	18.97	
2700.00	2688.35	2679.04	2646.65	7.40	9.30	283.75	-394.93	-33.78	280.73	265.98	19.03	
2800.00	2787.80	2778.26	2744.30	7.71	9.70	283.67	-412.49	-35.17	293.18	277.83	19.09	
2900.00	2887.25	2877.48	2841.94	8.01	10.10	283.59	-430.05	-36.56	305.64	289.67	19.14	
3000.00	2986.70	2976.70	2939.59	8.31	10.50	283.51	-447.61	-37.95	318.09	301.52	19.19	
3100.00	3086.15	3075.92	3037.23	8.61	10.90	283.45	-465.17	-39.34	330.55	313.36	19.23	
3200.00	3185.61	3175.14	3134.88	8.91	11.30	283.39	-482.73	-40.73	343.00	325.21	19.27	
3300.00	3285.06	3274.36	3232.52	9.21	11.70	283.33	-500.29	-42.12	355.46	337.05	19.31	
3400.00	3384.51	3373.58	3330.16	9.52	12.11	283.27	-517.86	-43.51	367.92	348.90	19.35	
3500.00	3483.96	3472.80	3427.81	9.82	12.51	283.22	-535.42	-44.90	380.37	360.75	19.38	

Weatherford International, Ltd.

Anticollision Report

Company:	BERRY PETROLEUM COMPANY	Date:	8/16/2007	Time:	11:04:36	Page:	2
Field:	GARFIELD COUNTY (NAD 83)	Co-ordinate(NE) Reference:	Well: OM13A M15 696, True North				
Reference Site:	SCHOOL HOUSE POINT M15 PAD	Vertical (TVD) Reference:	SITE 8413.0				
Reference Well:	OM13A M15 696						
Reference Wellpath:	1	Db: Sybase					

Site: SCHOOL HOUSE POINT M15 PAD
 Well: OM13D M15 696
 Wellpath: 1 V0 Plan: Plan #1 V1

Inter-Site Error: 0.00 ft

Reference MD ft	TVD ft	Offset MD ft	TVD ft	Semi-Major Axis Ref ft	Offset ft	TFO-HS deg	Offset Location North ft	East ft	Ctr-Ctr Distance ft	Edge Distance ft	Separation Factor	Warning
3600.00	3583.41	3572.02	3525.45	10.12	12.91	283.18	-552.98	-46.30	392.83	372.59	19.41	
3700.00	3682.86	3671.24	3623.10	10.42	13.31	283.13	-570.54	-47.69	405.29	384.44	19.44	
3800.00	3782.31	3770.46	3720.74	10.72	13.71	283.09	-588.10	-49.08	417.74	396.29	19.47	
3900.00	3881.77	3869.68	3818.39	11.03	14.11	283.05	-605.66	-50.47	430.20	408.13	19.49	
4000.00	3981.22	3968.90	3916.03	11.33	14.51	283.02	-623.22	-51.86	442.66	419.98	19.52	
4100.00	4080.67	4068.13	4013.67	11.63	14.92	282.98	-640.78	-53.25	455.12	431.83	19.54	
4200.00	4180.12	4167.35	4111.32	11.93	15.32	282.95	-658.34	-54.64	467.58	443.68	19.56	
4300.00	4279.57	4266.57	4208.96	12.23	15.72	282.92	-675.90	-56.03	480.03	455.52	19.58	
4400.00	4379.02	4365.79	4306.61	12.54	16.12	282.89	-693.46	-57.42	492.49	467.37	19.60	
4500.00	4478.48	4465.01	4404.25	12.84	16.52	282.86	-711.03	-58.82	504.95	479.22	19.62	
4600.00	4577.93	4564.23	4501.90	13.14	16.92	282.83	-728.59	-60.21	517.41	491.06	19.64	
4700.00	4677.38	4663.45	4599.54	13.44	17.33	282.81	-746.15	-61.60	529.87	502.91	19.66	
4800.00	4776.83	4762.67	4697.18	13.75	17.73	282.78	-763.71	-62.99	542.33	514.76	19.67	
4900.00	4876.28	4861.89	4794.83	14.05	18.13	282.76	-781.27	-64.38	554.79	526.61	19.69	
5000.00	4975.73	4961.11	4892.47	14.35	18.53	282.74	-798.83	-65.77	567.24	538.45	19.70	
5100.00	5075.19	5060.33	4990.12	14.65	18.93	282.71	-816.39	-67.16	579.70	550.30	19.72	
5200.00	5174.64	5159.55	5087.76	14.96	19.34	282.69	-833.95	-68.55	592.16	562.15	19.73	
5300.00	5274.09	5258.77	5185.41	15.26	19.74	282.67	-851.51	-69.94	604.62	574.00	19.74	
5400.00	5373.54	5357.99	5283.05	15.56	20.14	282.65	-869.07	-71.33	617.08	585.84	19.76	
5500.00	5472.99	5457.21	5380.69	15.86	20.54	282.64	-886.63	-72.73	629.54	597.69	19.77	
5600.00	5572.44	5556.43	5478.34	16.16	20.94	282.62	-904.19	-74.12	642.00	609.54	19.78	
5700.00	5671.90	5655.66	5575.98	16.47	21.35	282.60	-921.76	-75.51	654.46	621.39	19.79	
5800.00	5771.35	5754.88	5673.63	16.77	21.75	282.59	-939.32	-76.90	666.92	633.24	19.80	
5900.00	5870.80	5854.10	5771.27	17.07	22.15	282.57	-956.88	-78.29	679.38	645.08	19.81	
6000.00	5970.25	5953.32	5868.92	17.37	22.55	282.56	-974.44	-79.68	691.84	656.93	19.82	
6100.00	6069.70	6052.54	5966.56	17.68	22.95	282.54	-992.00	-81.07	704.30	668.78	19.83	
6200.00	6169.15	6151.76	6064.20	17.98	23.36	282.53	-1009.56	-82.46	716.76	680.63	19.84	
6300.00	6268.61	6261.46	6172.32	18.28	23.69	282.47	-1028.12	-83.93	728.57	691.87	19.85	
6400.00	6368.06	6372.65	6282.23	18.58	23.97	282.33	-1044.83	-85.26	738.81	701.54	19.82	
6500.00	6467.51	6484.12	6392.74	18.89	24.23	282.09	-1059.44	-86.41	747.46	709.64	19.76	
6600.00	6567.00	6595.81	6503.71	19.16	24.47	281.75	-1071.93	-87.40	754.62	716.26	19.68	
6700.00	6666.64	6707.67	6615.09	19.35	24.70	281.44	-1082.28	-88.22	760.52	721.74	19.61	
6800.00	6766.41	6819.69	6726.81	19.53	24.89	281.20	-1090.47	-88.87	765.19	726.01	19.53	
6900.00	6866.29	6931.83	6838.78	19.70	25.07	281.02	-1096.48	-89.35	768.62	729.08	19.44	
7000.00	6966.23	7044.05	6950.93	19.86	25.23	280.90	-1100.31	-89.65	770.79	730.93	19.34	
7100.00	7066.22	7156.31	7063.18	20.00	25.36	280.84	-1101.95	-89.78	771.70	731.55	19.22	
7200.00	7166.22	7259.35	7166.22	20.14	25.49	148.77	-1102.02	-89.79	771.73	734.54	20.75	
7300.00	7266.22	7359.35	7266.22	20.32	25.63	148.77	-1102.02	-89.79	771.73	734.17	20.55	
7400.00	7366.22	7459.35	7366.22	20.50	25.78	148.77	-1102.02	-89.79	771.73	733.79	20.34	
7500.00	7466.22	7559.35	7466.22	20.68	25.92	148.77	-1102.02	-89.79	771.73	733.41	20.14	
7600.00	7566.22	7659.35	7566.22	20.86	26.07	148.77	-1102.02	-89.79	771.73	733.03	19.94	
7700.00	7666.22	7759.35	7666.22	21.05	26.21	148.77	-1102.02	-89.79	771.73	732.64	19.75	
7800.00	7766.22	7859.35	7766.22	21.23	26.36	148.77	-1102.02	-89.79	771.73	732.26	19.55	
7900.00	7866.22	7959.35	7866.22	21.41	26.51	148.77	-1102.02	-89.79	771.73	731.87	19.36	
8000.00	7966.22	8059.35	7966.22	21.60	26.66	148.77	-1102.02	-89.79	771.73	731.49	19.18	
8100.00	8066.22	8159.35	8066.22	21.78	26.81	148.77	-1102.02	-89.79	771.73	731.10	19.00	
8200.00	8166.22	8259.35	8166.22	21.97	26.96	148.77	-1102.02	-89.79	771.73	730.71	18.81	
8300.00	8266.22	8359.35	8266.22	22.15	27.11	148.77	-1102.02	-89.79	771.73	730.32	18.64	
8400.00	8366.22	8459.35	8366.22	22.34	27.26	148.77	-1102.02	-89.79	771.73	729.93	18.46	
8500.00	8466.22	8559.35	8466.22	22.53	27.42	148.77	-1102.02	-89.79	771.73	729.54	18.29	
8600.00	8566.22	8659.35	8566.22	22.72	27.57	148.77	-1102.02	-89.79	771.73	729.14	18.12	

Weatherford International, Ltd.

Anticollision Report

Company:	BERRY PETROLEUM COMPANY	Date:	8/16/2007	Time:	11:04:36	Page:	3
Field:	GARFIELD COUNTY (NAD 83)						
Reference Site:	SCHOOL HOUSE POINT M15 PAD	Co-ordinate(NE) Reference:	Well: OM13A M15 696, True North				
Reference Well:	OM13A M15 696	Vertical (TVD) Reference:	SITE 8413.0				
Reference Wellpath:	1					Db:	Sybase

Site: SCHOOL HOUSE POINT M15 PAD
 Well: OM13D M15 696
 Wellpath: 1 V0 Plan: Plan #1 V1

Inter-Site Error: 0.00 ft

Reference MD	Reference TVD	Offset MD	Offset TVD	Semi-Major Axis Ref	Semi-Major Axis Offset	TFO-HS	Offset Location North	Offset Location East	Ctr-Ctr Distance	Edge Distance	Separation Factor	Warning
ft	ft	ft	ft	ft	ft	deg	ft	ft	ft	ft		
8700.00	8666.22	8759.35	8666.22	22.91	27.73	148.77	-1102.02	-89.79	771.73	728.75	17.96	
8800.00	8766.22	8859.35	8766.22	23.10	27.89	148.77	-1102.02	-89.79	771.73	728.35	17.79	
8900.00	8866.22	8959.35	8866.22	23.29	28.05	148.77	-1102.02	-89.79	771.73	727.96	17.63	
9000.00	8966.22	9059.35	8966.22	23.48	28.20	148.77	-1102.02	-89.79	771.73	727.56	17.47	
9100.00	9066.22	9159.35	9066.22	23.67	28.36	148.77	-1102.02	-89.79	771.73	727.16	17.32	
9200.00	9166.22	9259.35	9166.22	23.86	28.52	148.77	-1102.02	-89.79	771.73	726.76	17.16	
9300.00	9266.22	9359.35	9266.22	24.05	28.69	148.77	-1102.02	-89.79	771.73	726.36	17.01	
9400.00	9366.22	9459.35	9366.22	24.25	28.85	148.77	-1102.02	-89.79	771.73	725.96	16.86	
9500.00	9466.22	9559.35	9466.22	24.44	29.01	148.77	-1102.02	-89.79	771.73	725.55	16.71	
9600.00	9566.22	9659.35	9566.22	24.64	29.18	148.77	-1102.02	-89.79	771.73	725.15	16.57	
9700.00	9666.22	9759.35	9666.22	24.83	29.34	148.77	-1102.02	-89.79	771.73	724.75	16.43	
9800.00	9766.22	9859.35	9766.22	25.03	29.51	148.77	-1102.02	-89.79	771.73	724.34	16.29	
9900.00	9866.22	9959.35	9866.22	25.22	29.67	148.77	-1102.02	-89.79	771.73	723.94	16.15	
10000.00	9966.22	10059.35	9966.22	25.42	29.84	148.77	-1102.02	-89.79	771.73	723.53	16.01	
10100.00	10066.22	10159.35	10066.22	25.61	30.01	148.77	-1102.02	-89.79	771.73	723.12	15.88	
10124.78	10091.00	10184.13	10091.00	25.66	30.05	148.77	-1102.02	-89.79	771.73	723.02	15.84	

Site: SCHOOL HOUSE POINT M15 PAD
 Well: OM14B M15 696
 Wellpath: 1 V0 Plan: Plan #1 V1

Inter-Site Error: 0.00 ft

Reference MD	Reference TVD	Offset MD	Offset TVD	Semi-Major Axis Ref	Semi-Major Axis Offset	TFO-HS	Offset Location North	Offset Location East	Ctr-Ctr Distance	Edge Distance	Separation Factor	Warning
ft	ft	ft	ft	ft	ft	deg	ft	ft	ft	ft		
0.00	0.00	0.00	0.00	0.00	0.00	11.30	20.00	4.00	20.40			No Data
100.00	100.00	100.00	100.00	0.09	0.09	11.30	20.00	4.00	20.40	20.22	116.36	
200.00	200.00	200.00	200.00	0.31	0.31	11.30	20.00	4.00	20.40	19.78	32.65	
300.00	300.00	300.00	300.00	0.54	0.54	11.30	20.00	4.00	20.40	19.33	18.99	
400.00	400.00	400.00	400.00	0.76	0.76	143.54	20.00	4.00	20.49	18.96	13.44	
500.00	499.96	500.51	500.49	0.99	0.99	150.64	18.43	4.78	21.37	19.40	10.81	
600.00	599.77	600.74	600.57	1.23	1.22	166.94	13.71	7.13	23.94	21.50	9.83	
700.00	699.31	700.43	699.88	1.49	1.47	185.62	5.91	11.00	30.59	27.67	10.49	
800.00	798.77	799.51	798.22	1.76	1.75	201.35	-4.90	16.38	40.38	36.94	11.74	
900.00	898.22	898.23	895.86	2.04	2.06	213.24	-17.94	22.86	52.70	48.69	13.16	
1000.00	997.67	996.99	993.52	2.33	2.39	220.58	-31.11	29.41	66.46	61.88	14.51	
1100.00	1097.12	1095.76	1091.18	2.62	2.72	225.37	-44.28	35.96	80.92	75.76	15.68	
1200.00	1196.57	1194.52	1188.84	2.91	3.06	228.69	-57.45	42.50	95.77	90.03	16.68	
1300.00	1296.02	1293.28	1286.50	3.21	3.40	231.12	-70.62	49.05	110.85	104.52	17.52	
1400.00	1395.48	1392.04	1384.16	3.51	3.75	232.96	-83.79	55.60	126.08	119.17	18.24	
1500.00	1494.93	1490.80	1481.82	3.80	4.10	234.40	-96.96	62.15	141.41	133.91	18.85	
1600.00	1594.38	1589.57	1579.48	4.10	4.45	235.57	-110.13	68.70	156.81	148.72	19.39	
1700.00	1693.83	1688.33	1677.14	4.40	4.80	236.52	-123.30	75.25	172.26	163.58	19.85	
1800.00	1793.28	1787.09	1774.80	4.70	5.15	237.32	-136.47	81.79	187.75	178.48	20.26	
1900.00	1892.73	1885.85	1872.47	5.00	5.51	238.00	-149.64	88.34	203.27	193.41	20.62	
2000.00	1992.19	1984.61	1970.13	5.30	5.86	238.58	-162.81	94.89	218.81	208.36	20.95	
2100.00	2091.64	2083.38	2067.79	5.60	6.22	239.08	-175.98	101.44	234.37	223.33	21.23	
2200.00	2191.09	2182.14	2165.45	5.90	6.57	239.52	-189.15	107.99	249.95	238.32	21.49	
2300.00	2290.54	2280.90	2263.11	6.20	6.93	239.91	-202.32	114.54	265.54	253.32	21.73	
2400.00	2389.99	2379.66	2360.77	6.50	7.29	240.25	-215.49	121.08	281.14	268.33	21.94	
2500.00	2489.44	2478.43	2458.43	6.80	7.64	240.56	-228.66	127.63	296.75	283.35	22.14	
2600.00	2588.90	2577.19	2556.09	7.10	8.00	240.84	-241.83	134.18	312.37	298.37	22.32	
2700.00	2688.35	2675.95	2653.75	7.40	8.36	241.09	-255.00	140.73	327.99	313.40	22.48	
2800.00	2787.80	2774.71	2751.41	7.71	8.72	241.32	-268.17	147.28	343.62	328.44	22.63	

Weatherford International, Ltd.

Anticollision Report

Company: BERRY PETROLEUM COMPANY	Date: 8/16/2007	Time: 11:04:36	Page: 4
Field: GARFIELD COUNTY (NAD 83)			
Reference Site: SCHOOL HOUSE POINT M15 PAD	Co-ordinate(NE) Reference:	Well: OM13A M15 696, True North	
Reference Well: OM13A M15 696	Vertical (TVD) Reference:	SITE 8413.0	
Reference Wellpath: 1	Db: Sybase		

Site: SCHOOL HOUSE POINT M15 PAD
 Well: OM14B M15 696
 Wellpath: 1 V0 Plan: Plan #1 V1

Inter-Site Error: 0.00 ft

Reference MD ft	TVD ft	Offset MD ft	TVD ft	Semi-Major Axis Ref ft	Offset ft	TFO-HS deg	Offset Location North ft	East ft	Ctr-Ctr Distance ft	Edge Distance ft	Separation Factor	Warning
2900.00	2887.25	2873.47	2849.07	8.01	9.07	241.53	-281.34	153.83	359.26	343.48	22.78	
3000.00	2986.70	2972.24	2946.73	8.31	9.43	241.72	-294.51	160.37	374.89	358.53	22.91	
3100.00	3086.15	3071.00	3044.39	8.61	9.79	241.90	-307.68	166.92	390.54	373.58	23.03	
3200.00	3185.61	3169.76	3142.05	8.91	10.15	242.06	-320.85	173.47	406.18	388.63	23.14	
3300.00	3285.06	3268.52	3239.72	9.21	10.51	242.21	-334.03	180.02	421.83	403.69	23.25	
3400.00	3384.51	3367.28	3337.38	9.52	10.87	242.35	-347.20	186.57	437.48	418.74	23.35	
3500.00	3483.96	3466.05	3435.04	9.82	11.22	242.48	-360.37	193.11	453.14	433.81	23.44	
3600.00	3583.41	3564.81	3532.70	10.12	11.58	242.60	-373.54	199.66	468.79	448.87	23.53	
3700.00	3682.86	3663.57	3630.36	10.42	11.94	242.72	-386.71	206.21	484.45	463.93	23.61	
3800.00	3782.31	3762.33	3728.02	10.72	12.30	242.82	-399.88	212.76	500.11	479.00	23.69	
3900.00	3881.77	3861.10	3825.68	11.03	12.66	242.92	-413.05	219.31	515.77	494.07	23.76	
4000.00	3981.22	3959.86	3923.34	11.33	13.02	243.02	-426.22	225.86	531.44	509.14	23.83	
4100.00	4080.67	4058.62	4021.00	11.63	13.38	243.11	-439.39	232.40	547.10	524.21	23.90	
4200.00	4180.12	4157.38	4118.66	11.93	13.74	243.19	-452.56	238.95	562.76	539.28	23.96	
4300.00	4279.57	4256.14	4216.32	12.23	14.10	243.27	-465.73	245.50	578.43	554.35	24.02	
4400.00	4379.02	4354.91	4313.98	12.54	14.46	243.34	-478.90	252.05	594.10	569.42	24.08	
4500.00	4478.48	4453.67	4411.64	12.84	14.81	243.41	-492.07	258.60	609.77	584.50	24.13	
4600.00	4577.93	4552.43	4509.31	13.14	15.17	243.48	-505.24	265.15	625.44	599.57	24.18	
4700.00	4677.38	4651.19	4606.97	13.44	15.53	243.55	-518.41	271.69	641.11	614.65	24.23	
4800.00	4776.83	4749.95	4704.63	13.75	15.89	243.61	-531.58	278.24	656.78	629.73	24.28	
4900.00	4876.28	4848.72	4802.29	14.05	16.25	243.67	-544.75	284.79	672.45	644.81	24.33	
5000.00	4975.73	4947.48	4899.95	14.35	16.61	243.72	-557.92	291.34	688.12	659.88	24.37	
5100.00	5075.19	5046.24	4997.61	14.65	16.97	243.78	-571.09	297.89	703.79	674.96	24.41	
5200.00	5174.64	5145.00	5095.27	14.96	17.33	243.83	-584.26	304.44	719.47	690.04	24.45	
5300.00	5274.09	5243.77	5192.93	15.26	17.69	243.88	-597.43	310.98	735.14	705.12	24.49	
5400.00	5373.54	5342.53	5290.59	15.56	18.05	243.92	-610.60	317.53	750.81	720.20	24.53	
5500.00	5472.99	5441.29	5388.25	15.86	18.41	243.97	-623.77	324.08	766.49	735.28	24.56	
5600.00	5572.44	5540.05	5485.91	16.16	18.77	244.01	-636.94	330.63	782.16	750.36	24.60	
5700.00	5671.90	5638.81	5583.57	16.47	19.13	244.05	-650.11	337.18	797.84	765.45	24.63	
5800.00	5771.35	5737.58	5681.23	16.77	19.49	244.09	-663.29	343.72	813.52	780.53	24.66	
5900.00	5870.80	5836.34	5778.89	17.07	19.85	244.13	-676.46	350.27	829.19	795.61	24.69	
6000.00	5970.25	5935.10	5876.56	17.37	20.21	244.17	-689.63	356.82	844.87	810.69	24.72	
6100.00	6069.70	6033.86	5974.22	17.68	20.57	244.20	-702.80	363.37	860.55	825.78	24.75	
6200.00	6169.15	6132.62	6071.88	17.98	20.93	244.24	-715.97	369.92	876.22	840.86	24.78	
6300.00	6268.61	6231.39	6169.54	18.28	21.29	244.27	-729.14	376.47	891.90	855.94	24.80	
6400.00	6368.06	6332.79	6269.82	18.58	21.64	244.30	-742.62	383.17	907.55	871.00	24.83	
6500.00	6467.51	6445.09	6381.08	18.89	21.95	244.27	-756.23	389.94	922.22	885.11	24.85	
6600.00	6567.00	6557.85	6493.08	19.16	22.20	244.10	-767.93	395.75	935.28	897.68	24.88	
6700.00	6666.64	6671.09	6605.79	19.35	22.43	243.92	-777.69	400.61	946.16	908.18	24.91	
6800.00	6766.41	6784.73	6719.10	19.53	22.65	243.78	-785.48	404.48	954.82	916.47	24.89	
6900.00	6866.29	6898.68	6832.86	19.70	22.84	243.68	-791.27	407.36	961.24	922.54	24.84	
7000.00	6966.23	7012.86	6946.96	19.86	23.01	243.61	-795.04	409.23	965.41	926.40	24.74	
7100.00	7066.22	7127.15	7061.24	20.00	23.15	243.58	-796.77	410.09	967.33	928.02	24.61	
7200.00	7166.22	7232.14	7166.22	20.14	23.30	111.51	-796.89	410.15	967.46	925.25	22.92	
7300.00	7266.22	7332.14	7266.22	20.32	23.45	111.51	-796.89	410.15	967.46	924.91	22.74	
7400.00	7366.22	7432.14	7366.22	20.50	23.60	111.51	-796.89	410.15	967.46	924.57	22.55	
7500.00	7466.22	7532.14	7466.22	20.68	23.76	111.51	-796.89	410.15	967.46	924.22	22.37	
7600.00	7566.22	7632.14	7566.22	20.86	23.92	111.51	-796.89	410.15	967.46	923.88	22.20	
7700.00	7666.22	7732.14	7666.22	21.05	24.08	111.51	-796.89	410.15	967.46	923.53	22.02	
7800.00	7766.22	7832.14	7766.22	21.23	24.24	111.51	-796.89	410.15	967.46	923.18	21.85	
7900.00	7866.22	7932.14	7866.22	21.41	24.40	111.51	-796.89	410.15	967.46	922.83	21.67	

Weatherford International, Ltd.

Anticollision Report

Company:	BERRY PETROLEUM COMPANY	Date:	8/16/2007	Time:	11:04:36	Page:	5
Field:	GARFIELD COUNTY (NAD 83)	Co-ordinate(NE) Reference:	Well: OM13A M15 696, True North				
Reference Site:	SCHOOL HOUSE POINT M15 PAD	Vertical (TVD) Reference:	SITE 8413.0				
Reference Well:	OM13A M15 696						
Reference Wellpath:	1	Db: Sybase					

Site: SCHOOL HOUSE POINT M15 PAD
 Well: OM14B M15 696
 Wellpath: 1 V0 Plan: Plan #1 V1

Inter-Site Error: 0.00 ft

Reference MD ft	TVD ft	Offset MD ft	TVD ft	Semi-Major Axis		Offset Location		North ft	East ft	Ctr-Ctr Distance ft	Edge Distance ft	Separation Factor	Warning
				Ref ft	Offset ft	TFO-HS deg							
8000.00	7966.22	8032.14	7966.22	21.60	24.56	111.51	-796.89	410.15		967.46	922.47	21.50	
8100.00	8066.22	8132.14	8066.22	21.78	24.72	111.51	-796.89	410.15		967.46	922.12	21.34	
8200.00	8166.22	8232.14	8166.22	21.97	24.88	111.51	-796.89	410.15		967.46	921.76	21.17	
8300.00	8266.22	8332.14	8266.22	22.15	25.05	111.51	-796.89	410.15		967.46	921.40	21.00	
8400.00	8366.22	8432.14	8366.22	22.34	25.21	111.51	-796.89	410.15		967.46	921.04	20.84	
8500.00	8466.22	8532.14	8466.22	22.53	25.38	111.51	-796.89	410.15		967.46	920.68	20.68	
8600.00	8566.22	8632.14	8566.22	22.72	25.55	111.51	-796.89	410.15		967.46	920.32	20.52	
8700.00	8666.22	8732.14	8666.22	22.91	25.72	111.51	-796.89	410.15		967.46	919.95	20.36	
8800.00	8766.22	8832.14	8766.22	23.10	25.88	111.51	-796.89	410.15		967.46	919.59	20.21	
8900.00	8866.22	8932.14	8866.22	23.29	26.05	111.51	-796.89	410.15		967.46	919.22	20.05	
9000.00	8966.22	9032.14	8966.22	23.48	26.22	111.51	-796.89	410.15		967.46	918.85	19.90	
9100.00	9066.22	9132.14	9066.22	23.67	26.40	111.51	-796.89	410.15		967.46	918.48	19.75	
9200.00	9166.22	9232.14	9166.22	23.86	26.57	111.51	-796.89	410.15		967.46	918.11	19.60	
9300.00	9266.22	9332.14	9266.22	24.05	26.74	111.51	-796.89	410.15		967.46	917.74	19.46	
9400.00	9366.22	9432.14	9366.22	24.25	26.92	111.51	-796.89	410.15		967.46	917.36	19.31	
9500.00	9466.22	9532.14	9466.22	24.44	27.09	111.51	-796.89	410.15		967.46	916.99	19.17	
9600.00	9566.22	9632.14	9566.22	24.64	27.26	111.51	-796.89	410.15		967.46	916.61	19.03	
9700.00	9666.22	9732.14	9666.22	24.83	27.44	111.51	-796.89	410.15		967.46	916.24	18.89	
9800.00	9766.22	9832.14	9766.22	25.03	27.62	111.51	-796.89	410.15		967.46	915.86	18.75	
9900.00	9866.22	9932.14	9866.22	25.22	27.79	111.51	-796.89	410.15		967.46	915.48	18.61	
10000.00	9966.22	10032.14	9966.22	25.42	27.97	111.51	-796.89	410.15		967.46	915.10	18.48	
10100.00	10066.22	10132.14	10066.22	25.61	28.15	111.51	-796.89	410.15		967.46	914.72	18.34	
10124.78	10091.00	10156.92	10091.00	25.66	28.20	111.51	-796.89	410.15		967.46	914.62	18.31	