



Weatherford[®]

Drilling Services

Proposal

BERRY PETROLEUM CO.

SCHOOL HOUSE POINT OM12B ^LM15 ⁴⁰692

GARFIELD COUNTY, COLORADO

WELL FILE: **PLAN # 1**

AUGUST 16, 2007

Weatherford International Ltd.

2690 Oil Drive
Casper Wyoming 82604 USA
+1.307-265-1413 Main
+1.307-235-3958 Fax
www.weatherford.com



Berry Petroleum Company

SCHOOL HOUSE POINT OM12B M15 696
1806' FSL, 1266' FWL
SECTION 15-T6S-R96W
GARFIELD COUNTY, CO

SITE DETAILS

SCHOOL HOUSE POINT M15 PAD
SECTION 15-T6S-R96W

Site Centre Latitude: 39°31'14.760N
Longitude: 108°06'00.640W

Ground Level: 8391.00
Positional Uncertainty: 0.00
Convergence: -1.64

FIELD DETAILS

GARFIELD COUNTY (NAD 83)
COLORADO

Geodetic System: US State Plane Coordinate System 1983
Ellipsoid: GRS 1980
Zone: Colorado, Central Zone
Magnetic Model: bggm2006

System Datum: Mean Sea Level
Local North: True North

SECTION DETAILS

Sec	MD	Inc	Azi	TVD	+N/-S	+E/-W	DLeg	TFace	VSec	Target
1	0.00	0.00	295.47	0.00	0.00	0.00	0.00	0.00	0.00	
2	855.00	0.00	295.47	855.00	0.00	0.00	0.00	0.00	0.00	
3	1379.84	10.50	295.47	1376.91	20.62	-43.28	2.00	295.47	47.94	
4	6190.63	10.50	295.47	6107.19	397.53	-834.52	0.00	0.00	924.37	
5	7240.30	0.00	295.47	7151.00	438.77	-921.08	1.00	180.00	1020.25	
6	10230.30	0.00	295.47	10141.00	438.77	-921.08	0.00	295.47	1020.25	PBHL_OM12B

WELL DETAILS

Name	+N/-S	+E/-W	Northing	Easting	Latitude	Longitude	Slot
OM12B M15 696	-39.00	-7.99	1625028.86	2266582.38	39°31'14.374N	108°06'00.742W	N/A

TARGET DETAILS

Name	TVD	+N/-S	+E/-W	Northing	Easting	Shape
PBHL	10629.00	-147.00	-731.72	1632657.89	2268634.60	Rectangle (100x200)

FORMATION TOP DETAILS

No.	TVDPath	MDPath	Formation
1	173.00	173.00	GREEN RIVER
2	2453.00	2474.25	WASATCH
3	5058.00	5123.58	FORT UNION
4	6668.00	6756.73	OHIO CREEK
5	7151.00	7240.30	APPROX TOP GAS
6	9491.00	9580.30	CAMEO
7	9991.00	10080.30	ROLLINS SS

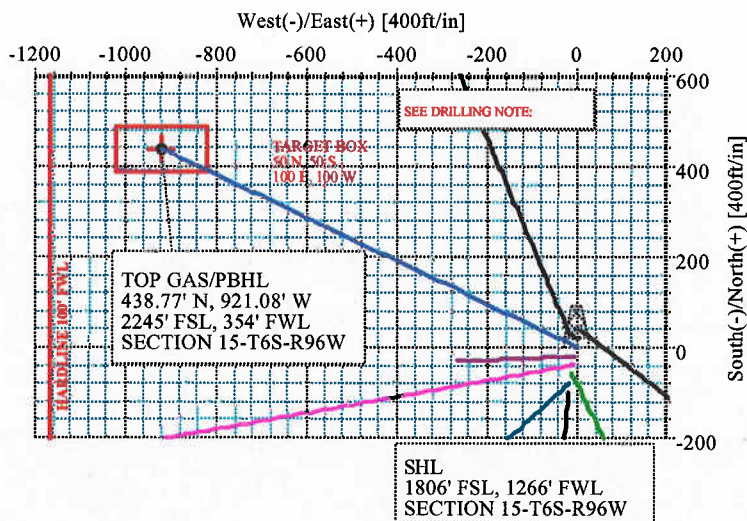
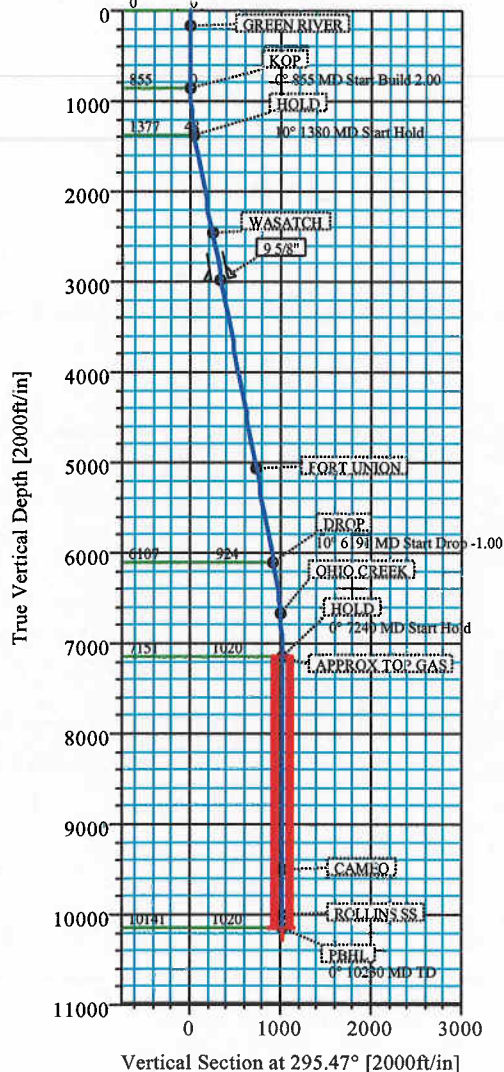


Azimuths to True North
Magnetic North: 10.93°

Magnetic Field
Strength: 52691nT
Dip Angle: 65.88°
Date: 8/15/2007
Model: bggm2006

TOTAL CORRECTION TO TRUE NORTH 10.93°

-DRILLING NOTE-
TO ACCOUNT FOR THE 240° DRIFT IN AZIMUTH, AIM
FOR THE NE SIDE OF PBHL, AND
BE IN THE TARGET WINDOW BY THE TOP GAS AND STAY
WITHIN THE WINDOW TO TD. DO NOT GO OUTSIDE THE
WINDOW.



Plan: Plan #1 (OM12B M15 696/1)

Created By: ROBERT SCOTT

Date: 8/16/2007

Weatherford International, Ltd.

PLAN REPORT

Company: BERRY PETROLEUM COMPANY	Date: 8/15/2007	Time: 16:44:22	Page: 1
Field: GARFIELD COUNTY (NAD 83)	Co-ordinate(NE) Reference:	Well: OM12B M15 696, True North	
Site: SCHOOL HOUSE POINT M15 PAD	Vertical (TVD) Reference:	SITE 8413.0	
Well: OM12B M15 696	Section (VS) Reference:	Well (0.00N,0.00E,295.47Azi)	
Wellpath: 1	Survey Calculation Method:	Minimum Curvature	Db: Sybase

Field: GARFIELD COUNTY (NAD 83)
COLORADO

Map System: US State Plane Coordinate System 1983
Geo Datum: GRS 1980
Sys Datum: Mean Sea Level

Map Zone: Colorado, Central Zone
Coordinate System: Well Centre
Geomagnetic Model: bggm2006

Site: SCHOOL HOUSE POINT M15 PAD
SECTION 15-T6S-R96W

Site Position:	Northing:	1625067.62 ft	Latitude:	39 31 14.760 N
From: Geographic	Easting:	2266591.48 ft	Longitude:	108 6 0.640 W
Position Uncertainty:		0.00 ft	North Reference:	True
Ground Level:		8391.00 ft	Grid Convergence:	-1.64 deg

Well: OM12B M15 696	Slot Name:	
1806' FSL, 1266' FWL		
Well Position:	Northing:	1625028.86 ft
+N/-S -39.00 ft	Easting:	2266582.38 ft
+E/-W -7.99 ft	Latitude:	39 31 14.374 N
Position Uncertainty:	Longitude:	108 6 0.742 W
0.00 ft		

Wellpath: 1	Drilled From:	Surface
Current Datum: SITE	Tie-on Depth:	0.00 ft
Magnetic Data: 8/15/2007	Above System Datum:	Mean Sea Level
Field Strength: 52691 nT	Declination:	10.93 deg
Vertical Section: Depth From (TVD)	Mag Dip Angle:	65.88 deg
ft	+N/-S	Direction
	ft	deg
0.00	0.00	0.00
		295.47

Plan: Plan #1	Date Composed:	8/15/2007
Principal: Yes	Version:	1
	Tied-to:	From Surface

Plan Section Information

MD ft	Incl deg	Azlm deg	TVD ft	+N/-S ft	+E/-W ft	DLS deg/100ft	Build deg/100ft	Turn deg/100ft	TFO deg	Target
0.00	0.00	295.47	0.00	0.00	0.00	0.00	0.00	0.00	0.00	
855.00	0.00	295.47	855.00	0.00	0.00	0.00	0.00	0.00	0.00	
1379.84	10.50	295.47	1376.91	20.62	-43.28	2.00	2.00	0.00	295.47	
6190.63	10.50	295.47	6107.19	397.53	-834.52	0.00	0.00	0.00	0.00	
7240.30	0.00	295.47	7151.00	438.77	-921.08	1.00	-1.00	0.00	180.00	
10230.30	0.00	295.47	10141.00	438.77	-921.08	0.00	0.00	0.00	295.47	PBHL_OM12B

Survey

MD ft	Incl deg	Azlm deg	TVD ft	N/S ft	E/W ft	VS ft	DLS deg/100ft	Build deg/100ft	Turn deg/100ft	Comment
855.00	0.00	295.47	855.00	0.00	0.00	0.00	0.00	0.00	0.00	KOP
955.00	2.00	295.47	954.98	0.75	-1.58	1.75	2.00	2.00	0.00	
1055.00	4.00	295.47	1054.84	3.00	-6.30	6.98	2.00	2.00	0.00	
1155.00	6.00	295.47	1154.45	6.75	-14.17	15.69	2.00	2.00	0.00	
1255.00	8.00	295.47	1253.70	11.99	-25.17	27.88	2.00	2.00	0.00	
1355.00	10.00	295.47	1352.47	18.72	-39.29	43.52	2.00	2.00	0.00	
1379.84	10.50	295.47	1376.91	20.62	-43.28	47.94	2.00	2.00	0.00	HOLD
1455.00	10.50	295.47	1450.81	26.51	-55.64	61.63	0.00	0.00	0.00	
1555.00	10.50	295.47	1549.14	34.34	-72.09	79.85	0.00	0.00	0.00	
1655.00	10.50	295.47	1647.46	42.18	-88.54	98.07	0.00	0.00	0.00	
1755.00	10.50	295.47	1745.79	50.01	-104.99	116.29	0.00	0.00	0.00	
1855.00	10.50	295.47	1844.12	57.85	-121.43	134.51	0.00	0.00	0.00	
1955.00	10.50	295.47	1942.44	65.68	-137.88	152.72	0.00	0.00	0.00	
2055.00	10.50	295.47	2040.77	73.52	-154.33	170.94	0.00	0.00	0.00	
2155.00	10.50	295.47	2139.10	81.35	-170.77	189.16	0.00	0.00	0.00	

Weatherford International, Ltd.

PLAN REPORT

Company: BERRY PETROLEUM COMPANY Field: GARFIELD COUNTY (NAD 83) Site: SCHOOL HOUSE POINT M15 PAD Well: OM12B M15 696 Wellpath: 1	Date: 8/15/2007 Co-ordinate(NE) Reference: Well: OM12B M15 696, True North Vertical (TVD) Reference: SITE 8413.0 Section (VS) Reference: Well (0.00N,0.00E,295.47Azi) Survey Calculation Method: Minimum Curvature Db: Sybase
--	---

Survey

MD ft	Incl deg	Azlm deg	TVD ft	N/S ft	E/W ft	VS ft	DLS deg/100ft	Build deg/100ft	Turn deg/100ft	Comment
2255.00	10.50	295.47	2237.42	89.18	-187.22	207.38	0.00	0.00	0.00	
2355.00	10.50	295.47	2335.75	97.02	-203.67	225.60	0.00	0.00	0.00	
2455.00	10.50	295.47	2434.08	104.85	-220.12	243.81	0.00	0.00	0.00	
2474.25	10.50	295.47	2453.00	106.36	-223.28	247.32	0.00	0.00	0.00	WASATCH
2555.00	10.50	295.47	2532.40	112.69	-236.56	262.03	0.00	0.00	0.00	
2655.00	10.50	295.47	2630.73	120.52	-253.01	280.25	0.00	0.00	0.00	
2755.00	10.50	295.47	2729.06	128.36	-269.46	298.47	0.00	0.00	0.00	
2855.00	10.50	295.47	2827.38	136.19	-285.90	316.69	0.00	0.00	0.00	
2955.00	10.50	295.47	2925.71	144.03	-302.35	334.90	0.00	0.00	0.00	
3000.00	10.50	295.47	2969.96	147.55	-309.75	343.10	0.00	0.00	0.00	9 5/8"
3055.00	10.50	295.47	3024.04	151.86	-318.80	353.12	0.00	0.00	0.00	
3155.00	10.50	295.47	3122.36	159.70	-335.25	371.34	0.00	0.00	0.00	
3255.00	10.50	295.47	3220.69	167.53	-351.69	389.56	0.00	0.00	0.00	
3355.00	10.50	295.47	3319.02	175.37	-368.14	407.78	0.00	0.00	0.00	
3455.00	10.50	295.47	3417.34	183.20	-384.59	425.99	0.00	0.00	0.00	
3555.00	10.50	295.47	3515.67	191.04	-401.04	444.21	0.00	0.00	0.00	
3655.00	10.50	295.47	3613.99	198.87	-417.48	462.43	0.00	0.00	0.00	
3755.00	10.50	295.47	3712.32	206.71	-433.93	480.65	0.00	0.00	0.00	
3855.00	10.50	295.47	3810.65	214.54	-450.38	498.87	0.00	0.00	0.00	
3955.00	10.50	295.47	3908.97	222.38	-466.82	517.08	0.00	0.00	0.00	
4055.00	10.50	295.47	4007.30	230.21	-483.27	535.30	0.00	0.00	0.00	
4155.00	10.50	295.47	4105.63	238.05	-499.72	553.52	0.00	0.00	0.00	
4255.00	10.50	295.47	4203.95	245.88	-516.17	571.74	0.00	0.00	0.00	
4355.00	10.50	295.47	4302.28	253.72	-532.61	589.96	0.00	0.00	0.00	
4455.00	10.50	295.47	4400.61	261.55	-549.06	608.17	0.00	0.00	0.00	
4555.00	10.50	295.47	4498.93	269.38	-565.51	626.39	0.00	0.00	0.00	
4655.00	10.50	295.47	4597.26	277.22	-581.95	644.61	0.00	0.00	0.00	
4755.00	10.50	295.47	4695.59	285.05	-598.40	662.83	0.00	0.00	0.00	
4855.00	10.50	295.47	4793.91	292.89	-614.85	681.05	0.00	0.00	0.00	
4955.00	10.50	295.47	4892.24	300.72	-631.30	699.26	0.00	0.00	0.00	
5055.00	10.50	295.47	4990.57	308.56	-647.74	717.48	0.00	0.00	0.00	
5123.58	10.50	295.47	5058.00	313.93	-659.02	729.98	0.00	0.00	0.00	FORT UNION
5155.00	10.50	295.47	5088.89	316.39	-664.19	735.70	0.00	0.00	0.00	
5255.00	10.50	295.47	5187.22	324.23	-680.64	753.92	0.00	0.00	0.00	
5355.00	10.50	295.47	5285.55	332.06	-697.08	772.14	0.00	0.00	0.00	
5455.00	10.50	295.47	5383.87	339.90	-713.53	790.35	0.00	0.00	0.00	
5555.00	10.50	295.47	5482.20	347.73	-729.98	808.57	0.00	0.00	0.00	
5655.00	10.50	295.47	5580.53	355.57	-746.43	826.79	0.00	0.00	0.00	
5755.00	10.50	295.47	5678.85	363.40	-762.87	845.01	0.00	0.00	0.00	
5855.00	10.50	295.47	5777.18	371.24	-779.32	863.23	0.00	0.00	0.00	
5955.00	10.50	295.47	5875.50	379.07	-795.77	881.44	0.00	0.00	0.00	
6055.00	10.50	295.47	5973.83	386.91	-812.22	899.66	0.00	0.00	0.00	
6155.00	10.50	295.47	6072.16	394.74	-828.66	917.88	0.00	0.00	0.00	
6190.63	10.50	295.47	6107.19	397.53	-834.52	924.37	0.00	0.00	0.00	DROP
6255.00	9.85	295.47	6170.55	402.42	-844.79	935.74	1.00	-1.00	0.00	
6355.00	8.85	295.47	6269.22	409.41	-859.46	951.99	1.00	-1.00	0.00	
6455.00	7.85	295.47	6368.16	415.66	-872.58	966.52	1.00	-1.00	0.00	
6555.00	6.85	295.47	6467.33	421.16	-884.13	979.32	1.00	-1.00	0.00	
6655.00	5.85	295.47	6566.72	425.92	-894.12	990.38	1.00	-1.00	0.00	
6755.00	4.85	295.47	6666.28	429.93	-902.54	999.71	1.00	-1.00	0.00	
6756.73	4.84	295.47	6668.00	430.00	-902.67	999.86	1.00	-1.00	0.00	OHIO CREEK
6855.00	3.85	295.47	6765.99	433.20	-909.39	1007.30	1.00	-1.00	0.00	
6955.00	2.85	295.47	6865.82	435.71	-914.67	1013.15	1.00	-1.00	0.00	

Weatherford International, Ltd.

PLAN REPORT

Company: BERRY PETROLEUM COMPANY Field: GARFIELD COUNTY (NAD 83) Site: SCHOOL HOUSE POINT M15 PAD Well: OM12B M15 696 Wellpath: 1	Date: 8/15/2007 Co-ordinate(NE) Reference: Well: OM12B M15 696, True North Vertical (TVD) Reference: SITE 8413.0 Section (VS) Reference: Well (0.00N,0.00E,295.47Azi) Survey Calculation Method: Minimum Curvature Db: Sybase
--	---

Survey

MD ft	Incl deg	Azim deg	TVD ft	N/S ft	E/W ft	VS ft	DLS deg/100ft	Build deg/100ft	Turn deg/100ft	Comment
7055.00	1.85	295.47	6965.73	437.48	-918.38	1017.26	1.00	-1.00	0.00	
7155.00	0.85	295.47	7065.70	438.50	-920.51	1019.62	1.00	-1.00	0.00	
7240.30	0.00	295.47	7151.00	438.77	-921.08	1020.25	1.00	-1.00	0.00	APPROX TOP GAS
7255.00	0.00	295.47	7165.70	438.77	-921.08	1020.25	0.00	0.00	0.00	
7355.00	0.00	295.47	7265.70	438.77	-921.08	1020.25	0.00	0.00	0.00	
7455.00	0.00	295.47	7365.70	438.77	-921.08	1020.25	0.00	0.00	0.00	
7555.00	0.00	295.47	7465.70	438.77	-921.08	1020.25	0.00	0.00	0.00	
7655.00	0.00	295.47	7565.70	438.77	-921.08	1020.25	0.00	0.00	0.00	
7755.00	0.00	295.47	7665.70	438.77	-921.08	1020.25	0.00	0.00	0.00	
7855.00	0.00	295.47	7765.70	438.77	-921.08	1020.25	0.00	0.00	0.00	
7955.00	0.00	295.47	7865.70	438.77	-921.08	1020.25	0.00	0.00	0.00	
8055.00	0.00	295.47	7965.70	438.77	-921.08	1020.25	0.00	0.00	0.00	
8155.00	0.00	295.47	8065.70	438.77	-921.08	1020.25	0.00	0.00	0.00	
8255.00	0.00	295.47	8165.70	438.77	-921.08	1020.25	0.00	0.00	0.00	
8355.00	0.00	295.47	8265.70	438.77	-921.08	1020.25	0.00	0.00	0.00	
8455.00	0.00	295.47	8365.70	438.77	-921.08	1020.25	0.00	0.00	0.00	
8555.00	0.00	295.47	8465.70	438.77	-921.08	1020.25	0.00	0.00	0.00	
8655.00	0.00	295.47	8565.70	438.77	-921.08	1020.25	0.00	0.00	0.00	
8755.00	0.00	295.47	8665.70	438.77	-921.08	1020.25	0.00	0.00	0.00	
8855.00	0.00	295.47	8765.70	438.77	-921.08	1020.25	0.00	0.00	0.00	
8955.00	0.00	295.47	8865.70	438.77	-921.08	1020.25	0.00	0.00	0.00	
9055.00	0.00	295.47	8965.70	438.77	-921.08	1020.25	0.00	0.00	0.00	
9155.00	0.00	295.47	9065.70	438.77	-921.08	1020.25	0.00	0.00	0.00	
9255.00	0.00	295.47	9165.70	438.77	-921.08	1020.25	0.00	0.00	0.00	
9355.00	0.00	295.47	9265.70	438.77	-921.08	1020.25	0.00	0.00	0.00	
9455.00	0.00	295.47	9365.70	438.77	-921.08	1020.25	0.00	0.00	0.00	
9555.00	0.00	295.47	9465.70	438.77	-921.08	1020.25	0.00	0.00	0.00	
9580.30	0.00	295.47	9491.00	438.77	-921.08	1020.25	0.00	0.00	0.00	CAMEO
9655.00	0.00	295.47	9565.70	438.77	-921.08	1020.25	0.00	0.00	0.00	
9755.00	0.00	295.47	9665.70	438.77	-921.08	1020.25	0.00	0.00	0.00	
9855.00	0.00	295.47	9765.70	438.77	-921.08	1020.25	0.00	0.00	0.00	
9955.00	0.00	295.47	9865.70	438.77	-921.08	1020.25	0.00	0.00	0.00	
10055.00	0.00	295.47	9965.70	438.77	-921.08	1020.25	0.00	0.00	0.00	
10080.30	0.00	295.47	9991.00	438.77	-921.08	1020.25	0.00	0.00	0.00	ROLLINS SS
10155.00	0.00	295.47	10065.70	438.77	-921.08	1020.25	0.00	0.00	0.00	
10230.30	0.00	295.47	10141.00	438.77	-921.08	1020.25	0.00	0.00	0.00	PBHL_OM12B

Annotation

MD ft	TVD ft	
855.00	855.00	KOP
1379.84	1376.91	HOLD
6190.63	6107.19	DROP
7240.30	7151.00	HOLD
10230.30	10141.00	PBHL

Targets

Name	Description Dip.	Dir.	TVD ft	+N/-S ft	+E/-W ft	Map Northing ft	Map Easting ft	← Latitude → Deg Min Sec	← Longitude → Deg Min Sec
PBHL_OM12B	-Rectangle (100x200)		10141.00	438.77	-921.08	1625493.81	2265674.23	39 31 18.711 N	108 6 12.496 W
	-Plan hit target								

Weatherford International, Ltd.

Anticollision Report

Company:	BERRY PETROLEUM COMPANY	Date:	8/16/2007	Time:	09:18:43	Page:	1
Field:	GARFIELD COUNTY (NAD 83)						
Reference Site:	SCHOOL HOUSE POINT M15 PAD	Co-ordinate(NE) Reference:	Well: OM12B M15 696, True North				
Reference Well:	OM12B M15 696	Vertical (TVD) Reference:	SITE 8413.0				
Reference Wellpath:	1					Db:	Sybase

NO GLOBAL SCAN: Using user defined selection & scan criteria
 Interpolation Method: MD Interval: 100.00 ft
 Depth Range: 0.00 to 10230.30 ft
 Maximum Radius: 10000.00 ft

Reference: Plan: Plan #1
 Error Model: ISCWSA Ellipse
 Scan Method: Closest Approach 3D
 Error Surface: Ellipse

Plan: Plan #1	Date Composed: 8/15/2007
	Version: 1
Principal: Yes	Tied-to: From Surface

Summary

Site	Offset Wellpath Well	Wellpath	Reference MD ft	Offset MD ft	Ctr-Ctr Distance ft	Edge Distance ft	Separation Factor	Warning
SCHOOL HOUSE POINT M15 696	1 V0 Plan: Plan #1 V1	1700.00	1692.41	82.53	74.34	10.07		
SCHOOL HOUSE POINT M15 696	1 V0 Plan: Plan #1 V1	1000.00	999.94	21.59	17.37	5.11		

Site: SCHOOL HOUSE POINT M15 PAD
 Well: OM12A M15 696
 Wellpath: 1 V0 Plan: Plan #1 V1

Inter-Site Error: 0.00 ft

Reference MD ft	TVD ft	Offset MD ft	TVD ft	Semi-Major Axis Ref ft	Offset ft	TFO-HS deg	Offset Location North ft	East ft	Ctr-Ctr Distance ft	Edge Distance ft	Separation Factor	Warning
0.00	0.00	0.00	0.00	0.00	0.00	11.88	19.00	4.00	19.42			No Data
100.00	100.00	100.00	100.00	0.09	0.09	11.88	19.00	4.00	19.42	19.24	110.75	
200.00	200.00	200.00	200.00	0.31	0.31	11.88	19.00	4.00	19.42	18.79	31.07	
300.00	300.00	299.89	299.87	0.54	0.54	6.83	19.54	2.34	19.68	18.60	18.29	
400.00	400.00	399.53	399.37	0.76	0.77	352.97	21.15	-2.61	21.32	19.78	13.90	
500.00	500.00	498.69	498.19	0.99	1.01	336.94	24.06	-10.24	26.21	24.22	13.17	
600.00	600.00	597.94	597.07	1.21	1.24	330.58	29.58	-16.68	34.08	31.66	14.10	
700.00	700.00	697.54	696.30	1.44	1.47	330.89	37.20	-20.71	42.73	39.89	15.02	
800.00	800.00	797.16	795.54	1.66	1.73	331.93	45.19	-24.10	51.41	48.11	15.61	
900.00	900.00	896.80	894.80	1.89	1.99	37.35	53.18	-27.50	59.81	56.07	15.97	
1000.00	999.94	996.58	994.19	2.11	2.25	39.57	61.19	-30.90	65.93	61.73	15.69	
1100.00	1099.70	1096.41	1093.64	2.34	2.52	43.33	69.19	-34.30	69.56	64.90	14.91	
1200.00	1199.17	1196.16	1193.02	2.59	2.78	48.76	77.20	-37.70	71.12	65.98	13.82	
1300.00	1298.21	1295.73	1292.21	2.85	3.05	56.17	85.18	-41.09	71.30	65.64	12.58	
1400.00	1396.73	1394.99	1391.09	3.15	3.32	65.84	93.15	-44.47	71.20	64.96	11.40	
1500.00	1495.06	1494.13	1489.86	3.48	3.59	76.09	101.10	-47.85	72.86	65.97	10.58	
1600.00	1593.38	1593.27	1588.62	3.82	3.85	85.60	109.05	-51.22	76.74	69.20	10.17	
1700.00	1691.71	1692.41	1687.38	4.17	4.12	94.01	117.01	-54.60	82.53	74.34	10.07	
1800.00	1790.04	1791.56	1786.15	4.54	4.39	101.19	124.96	-57.98	89.87	81.03	10.17	
1900.00	1888.36	1890.70	1884.91	4.91	4.66	107.22	132.91	-61.36	98.40	88.95	10.41	
2000.00	1986.69	1989.84	1983.67	5.28	4.93	112.26	140.87	-64.73	107.85	97.80	10.73	
2100.00	2085.02	2088.98	2082.44	5.67	5.20	116.46	148.82	-68.11	117.99	107.35	11.09	
2200.00	2183.34	2188.12	2181.20	6.05	5.47	119.98	156.77	-71.49	128.67	117.45	11.47	
2300.00	2281.67	2287.26	2279.97	6.44	5.74	122.96	164.73	-74.87	139.75	127.96	11.86	
2400.00	2380.00	2386.40	2378.73	6.83	6.01	125.49	172.68	-78.24	151.15	138.80	12.24	
2500.00	2478.32	2485.19	2476.99	7.23	6.29	127.11	182.05	-82.23	162.91	149.97	12.59	
2600.00	2576.65	2584.43	2575.48	7.62	6.60	127.89	193.19	-86.95	174.87	161.30	12.89	
2700.00	2674.98	2683.68	2674.00	8.02	6.90	128.57	204.33	-91.68	186.86	172.66	13.16	
2800.00	2773.30	2782.94	2772.51	8.42	7.21	129.17	215.47	-96.41	198.87	184.04	13.41	
2900.00	2871.63	2882.20	2871.03	8.82	7.52	129.70	226.61	-101.14	210.90	195.44	13.64	
3000.00	2969.96	2981.45	2969.54	9.22	7.82	130.17	237.75	-105.87	222.94	206.85	13.86	
3100.00	3068.28	3080.71	3068.06	9.62	8.13	130.60	248.89	-110.60	235.00	218.28	14.05	
3200.00	3166.61	3179.96	3166.57	10.02	8.44	130.98	260.04	-115.33	247.07	229.72	14.24	
3300.00	3264.94	3279.22	3265.09	10.43	8.75	131.33	271.18	-120.07	259.15	241.16	14.41	
3400.00	3363.26	3378.47	3363.61	10.83	9.06	131.64	282.32	-124.80	271.24	252.62	14.57	
3500.00	3461.59	3477.73	3462.12	11.23	9.36	131.93	293.46	-129.53	283.34	264.08	14.71	

Weatherford International, Ltd.

Anticollision Report

Company:	BERRY PETROLEUM COMPANY	Date:	8/16/2007	Time:	09:18:43	Page:	2
Field:	GARFIELD COUNTY (NAD 83)						
Reference Site:	SCHOOL HOUSE POINT M15 PAD	Co-ordinate(NE) Reference:	Well: OM12B M15 696, True North				
Reference Well:	OM12B M15 696	Vertical (TVD) Reference:	SITE 8413.0				
Reference Wellpath:	1					Db:	Sybase

Site: SCHOOL HOUSE POINT M15 PAD
 Well: OM12A M15 696
 Wellpath: 1 V0 Plan: Plan #1 V1

Inter-Site Error: 0.00 ft

Reference MD ft	TVD ft	Offset MD ft	TVD ft	Semi-Major Axis Ref ft	Offset ft	TFO-HS deg	Offset Location North ft	East ft	Ctr-Ctr Distance ft	Edge Distance ft	Separation Factor	Warning
3600.00	3559.92	3576.99	3560.64	11.64	9.67	132.20	304.60	-134.26	295.44	275.55	14.85	
3700.00	3658.24	3676.24	3659.15	12.04	9.98	132.44	315.74	-138.99	307.55	287.02	14.98	
3800.00	3756.57	3775.50	3757.67	12.45	10.29	132.67	326.88	-143.72	319.66	298.50	15.10	
3900.00	3854.89	3874.75	3856.18	12.86	10.60	132.88	338.03	-148.45	331.78	309.98	15.22	
4000.00	3953.22	3974.01	3954.70	13.26	10.91	133.07	349.17	-153.18	343.90	321.46	15.33	
4100.00	4051.55	4073.27	4053.21	13.67	11.22	133.26	360.31	-157.91	356.03	332.95	15.43	
4200.00	4149.87	4172.52	4151.73	14.08	11.53	133.43	371.45	-162.64	368.16	344.45	15.53	
4300.00	4248.20	4271.78	4250.24	14.48	11.84	133.59	382.59	-167.37	380.29	355.94	15.62	
4400.00	4346.53	4371.03	4348.76	14.89	12.16	133.73	393.73	-172.10	392.42	367.44	15.71	
4500.00	4444.85	4470.29	4447.27	15.30	12.47	133.87	404.87	-176.83	404.56	378.94	15.79	
4600.00	4543.18	4569.55	4545.79	15.70	12.78	134.01	416.02	-181.56	416.70	390.44	15.87	
4700.00	4641.51	4668.80	4644.30	16.11	13.09	134.13	427.16	-186.29	428.84	401.94	15.94	
4800.00	4739.83	4768.06	4742.82	16.52	13.40	134.25	438.30	-191.02	440.99	413.45	16.01	
4900.00	4838.16	4867.31	4841.33	16.93	13.71	134.36	449.44	-195.75	453.13	424.95	16.08	
5000.00	4936.49	4966.57	4939.85	17.34	14.02	134.47	460.58	-200.48	465.28	436.46	16.15	
5100.00	5034.81	5065.83	5038.36	17.75	14.33	134.57	471.72	-205.21	477.43	447.97	16.21	
5200.00	5133.14	5165.08	5136.88	18.15	14.65	134.66	482.86	-209.94	489.58	459.48	16.27	
5300.00	5231.47	5264.34	5235.39	18.56	14.96	134.75	494.01	-214.67	501.73	470.99	16.32	
5400.00	5329.79	5363.59	5333.91	18.97	15.27	134.84	505.15	-219.40	513.88	482.51	16.38	
5500.00	5428.12	5462.85	5432.42	19.38	15.58	134.92	516.29	-224.13	526.03	494.02	16.43	
5600.00	5526.45	5562.11	5530.94	19.79	15.89	135.00	527.43	-228.86	538.19	505.53	16.48	
5700.00	5624.77	5661.36	5629.45	20.20	16.20	135.07	538.57	-233.59	550.34	517.05	16.53	
5800.00	5723.10	5760.62	5727.97	20.61	16.52	135.15	549.71	-238.32	562.50	528.57	16.58	
5900.00	5821.43	5859.87	5826.48	21.02	16.83	135.22	560.85	-243.05	574.66	540.08	16.62	
6000.00	5919.75	5959.13	5925.00	21.43	17.14	135.28	572.00	-247.78	586.82	551.60	16.66	
6100.00	6018.08	6058.39	6023.51	21.84	17.45	135.34	583.14	-252.51	598.97	563.12	16.71	
6200.00	6116.41	6157.64	6122.03	22.24	17.76	135.41	594.28	-257.24	611.13	574.64	16.75	
6300.00	6214.92	6256.99	6220.63	22.54	18.08	135.48	605.43	-261.98	622.55	585.49	16.80	
6400.00	6313.71	6356.46	6319.36	22.83	18.39	135.44	616.60	-266.72	632.74	595.11	16.81	
6500.00	6412.76	6456.02	6418.18	23.09	18.70	135.27	627.77	-271.46	641.70	603.49	16.79	
6600.00	6512.03	6555.36	6516.80	23.34	19.00	135.01	638.80	-276.15	649.45	610.68	16.75	
6700.00	6611.50	6654.40	6615.27	23.56	19.25	134.77	648.50	-280.27	656.08	616.81	16.71	
6800.00	6711.13	6753.56	6714.03	23.77	19.47	134.56	656.65	-283.72	661.59	621.88	16.66	
6900.00	6810.90	6852.83	6813.05	23.96	19.67	134.39	663.23	-286.52	665.99	625.87	16.60	
7000.00	6910.77	6952.19	6912.25	24.13	19.86	134.26	668.23	-288.64	669.26	628.77	16.53	
7100.00	7010.71	7051.61	7011.60	24.28	20.03	134.16	671.65	-290.09	671.40	630.57	16.45	
7200.00	7110.70	7151.07	7111.04	24.41	20.19	134.09	673.48	-290.87	672.40	631.28	16.35	
7300.00	7210.70	7250.73	7210.70	24.53	20.34	69.54	673.82	-291.02	672.49	628.65	15.34	
7400.00	7310.70	7350.73	7310.70	24.67	20.50	69.54	673.82	-291.02	672.49	628.34	15.23	
7500.00	7410.70	7450.73	7410.70	24.82	20.67	69.54	673.82	-291.02	672.49	628.01	15.12	
7600.00	7510.70	7550.73	7510.70	24.96	20.84	69.54	673.82	-291.02	672.49	627.69	15.01	
7700.00	7610.70	7650.73	7610.70	25.10	21.01	69.54	673.82	-291.02	672.49	627.36	14.90	
7800.00	7710.70	7750.73	7710.70	25.25	21.19	69.54	673.82	-291.02	672.49	627.04	14.80	
7900.00	7810.70	7850.73	7810.70	25.40	21.36	69.54	673.82	-291.02	672.49	626.71	14.69	
8000.00	7910.70	7950.73	7910.70	25.54	21.53	69.54	673.82	-291.02	672.49	626.37	14.58	
8100.00	8010.70	8050.73	8010.70	25.69	21.71	69.54	673.82	-291.02	672.49	626.04	14.48	
8200.00	8110.70	8150.73	8110.70	25.84	21.89	69.54	673.82	-291.02	672.49	625.71	14.38	
8300.00	8210.70	8250.73	8210.70	25.99	22.07	69.54	673.82	-291.02	672.49	625.37	14.27	
8400.00	8310.70	8350.73	8310.70	26.15	22.24	69.54	673.82	-291.02	672.49	625.03	14.17	
8500.00	8410.70	8450.73	8410.70	26.30	22.42	69.54	673.82	-291.02	672.49	624.69	14.07	
8600.00	8510.70	8550.73	8510.70	26.46	22.60	69.54	673.82	-291.02	672.49	624.34	13.97	

Weatherford International, Ltd.

Anticollision Report

Company:	BERRY PETROLEUM COMPANY	Date:	8/16/2007	Time:	09:18:43	Page:	3
Field:	GARFIELD COUNTY (NAD 83)						
Reference Site:	SCHOOL HOUSE POINT M15 PAD	Co-ordinate(NE) Reference:	Well: OM12B M15 696, True North				
Reference Well:	OM12B M15 696	Vertical (TVD) Reference:	SITE 8413.0				
Reference Wellpath:	1					Db:	Sybase

Site: SCHOOL HOUSE POINT M15 PAD
Well: OM12A M15 696
Wellpath: 1 V0 Plan: Plan #1 V1

Inter-Site Error: 0.00 ft

Reference MD ft	TVD ft	Offset MD ft	TVD ft	Semi-Major Axis Ref ft	Offset ft	TFO-HS deg	Offset Location North ft	East ft	Ctr-Ctr Distance ft	Edge Distance ft	Separation Factor	Warning
8700.00	8610.70	8650.73	8610.70	26.61	22.78	69.54	673.82	-291.02	672.49	624.00	13.87	
8800.00	8710.70	8750.73	8710.70	26.77	22.97	69.54	673.82	-291.02	672.49	623.65	13.77	
8900.00	8810.70	8850.73	8810.70	26.92	23.15	69.54	673.82	-291.02	672.49	623.30	13.67	
9000.00	8910.70	8950.73	8910.70	27.08	23.33	69.54	673.82	-291.02	672.49	622.95	13.58	
9100.00	9010.70	9050.73	9010.70	27.24	23.52	69.54	673.82	-291.02	672.49	622.60	13.48	
9200.00	9110.70	9150.73	9110.70	27.40	23.70	69.54	673.82	-291.02	672.49	622.25	13.39	
9300.00	9210.70	9250.73	9210.70	27.56	23.89	69.54	673.82	-291.02	672.49	621.90	13.29	
9400.00	9310.70	9350.73	9310.70	27.73	24.07	69.54	673.82	-291.02	672.49	621.54	13.20	
9500.00	9410.70	9450.73	9410.70	27.89	24.26	69.54	673.82	-291.02	672.49	621.18	13.11	
9600.00	9510.70	9550.73	9510.70	28.05	24.45	69.54	673.82	-291.02	672.49	620.82	13.02	
9700.00	9610.70	9650.73	9610.70	28.22	24.63	69.54	673.82	-291.02	672.49	620.46	12.93	
9800.00	9710.70	9750.73	9710.70	28.38	24.82	69.54	673.82	-291.02	672.49	620.10	12.84	
9900.00	9810.70	9850.73	9810.70	28.55	25.01	69.54	673.82	-291.02	672.49	619.74	12.75	
10000.00	9910.70	9950.73	9910.70	28.71	25.20	69.54	673.82	-291.02	672.49	619.38	12.66	
10100.00	10010.70	10050.73	10010.70	28.88	25.39	69.54	673.82	-291.02	672.49	619.01	12.58	
10200.00	10110.70	10150.73	10110.70	29.05	25.58	69.54	673.82	-291.02	672.49	618.64	12.49	
10230.30	10141.00	10181.03	10141.00	29.10	25.64	69.54	673.82	-291.02	672.49	618.53	12.46	

Site: SCHOOL HOUSE POINT M15 PAD
Well: OM12D M15 696
Wellpath: 1 V0 Plan: Plan #1 V1

Inter-Site Error: 0.00 ft

Reference MD ft	TVD ft	Offset MD ft	TVD ft	Semi-Major Axis Ref ft	Offset ft	TFO-HS deg	Offset Location North ft	East ft	Ctr-Ctr Distance ft	Edge Distance ft	Separation Factor	Warning
0.00	0.00	0.00	0.00	0.00	0.00	191.30	-20.00	-4.00	20.40			No Data
100.00	100.00	100.00	100.00	0.09	0.09	191.30	-20.00	-4.00	20.40	20.22	116.34	
200.00	200.00	200.00	200.00	0.31	0.31	191.30	-20.00	-4.00	20.40	19.77	32.64	
300.00	300.00	300.00	300.00	0.54	0.54	191.30	-20.00	-4.00	20.40	19.32	18.98	
400.00	400.00	400.00	400.00	0.76	0.76	191.30	-20.00	-4.00	20.40	18.87	13.38	
500.00	500.00	500.00	500.00	0.99	0.99	191.30	-20.00	-4.00	20.40	18.42	10.34	
600.00	600.00	600.00	600.00	1.21	1.21	191.30	-20.00	-4.00	20.40	17.97	8.42	
700.00	700.00	700.00	700.00	1.44	1.44	191.30	-20.00	-4.00	20.40	17.52	7.10	
800.00	800.00	800.00	800.00	1.66	1.66	191.30	-20.00	-4.00	20.40	17.07	6.14	
900.00	900.00	900.00	900.00	1.89	1.89	254.87	-20.00	-4.00	20.49	16.71	5.43	
1000.00	999.94	999.94	999.94	2.11	2.11	246.37	-20.00	-4.00	21.59	17.37	5.11	
1100.00	1099.70	1099.70	1099.70	2.34	2.33	232.08	-20.00	-4.00	25.10	20.43	5.37	
1200.00	1199.17	1199.17	1199.17	2.59	2.56	217.73	-20.00	-4.00	32.46	27.33	6.33	
1300.00	1298.21	1298.21	1298.21	2.85	2.78	206.88	-20.00	-4.00	44.16	38.58	7.92	
1400.00	1396.73	1396.73	1396.73	3.15	3.00	199.56	-20.00	-4.00	59.96	53.94	9.95	
1500.00	1495.06	1495.06	1495.06	3.48	3.22	195.04	-20.00	-4.00	77.40	70.91	11.93	
1600.00	1593.38	1593.38	1593.38	3.82	3.44	192.20	-20.00	-4.00	95.12	88.18	13.69	
1700.00	1691.71	1691.71	1691.71	4.17	3.67	190.25	-20.00	-4.00	113.01	105.59	15.25	
1800.00	1790.04	1790.04	1790.04	4.54	3.89	188.83	-20.00	-4.00	130.98	123.10	16.63	
1900.00	1888.36	1888.36	1888.36	4.91	4.11	187.75	-20.00	-4.00	149.02	140.67	17.86	
2000.00	1986.69	1986.69	1986.69	5.28	4.33	186.91	-20.00	-4.00	167.09	158.28	18.96	
2100.00	2085.02	2085.02	2085.02	5.67	4.55	186.23	-20.00	-4.00	185.19	175.91	19.95	
2200.00	2183.34	2183.34	2183.34	6.05	4.77	185.68	-20.00	-4.00	203.32	193.56	20.84	
2300.00	2281.67	2281.67	2281.67	6.44	4.99	185.21	-20.00	-4.00	221.46	211.23	21.65	
2400.00	2380.00	2380.00	2380.00	6.83	5.21	184.81	-20.00	-4.00	239.61	228.90	22.39	
2500.00	2478.32	2478.32	2478.32	7.23	5.43	184.47	-20.00	-4.00	257.77	246.59	23.07	
2600.00	2576.65	2576.65	2576.65	7.62	5.65	184.18	-20.00	-4.00	275.93	264.29	23.69	
2700.00	2674.98	2674.98	2674.98	8.02	5.88	183.92	-20.00	-4.00	294.11	281.98	24.26	

Weatherford International, Ltd.

Anticollision Report

Company:	BERRY PETROLEUM COMPANY	Date:	8/16/2007	Time:	09:18:43	Page:	4
Field:	GARFIELD COUNTY (NAD 83)	Co-ordinate(NE) Reference:	Well: OM12B M15 696, True North				
Reference Site:	SCHOOL HOUSE POINT M15 PAD	Vertical (TVD) Reference:	SITE 8413.0				
Reference Well:	OM12B M15 696						
Reference Wellpath:	1		Db: Sybase				

Site: SCHOOL HOUSE POINT M15 PAD
 Well: OM12D M15 696
 Wellpath: 1 V0 Plan: Plan #1 V1

Inter-Site Error: 0.00 ft

Reference MD ft	TVD ft	Offset MD ft	TVD ft	Semi-Major Axis Ref ft	Offset ft	TFO-HS deg	Offset Location North ft	East ft	Ctr-Ctr Distance ft	Edge Distance ft	Separation Factor	Warning
2800.00	2773.30	2773.30	2773.30	8.42	6.10	183.69	-20.00	-4.00	312.29	299.69	24.79	
2900.00	2871.63	2871.63	2871.63	8.82	6.32	183.49	-20.00	-4.00	330.47	317.40	25.28	
3000.00	2969.96	2969.96	2969.96	9.22	6.54	183.31	-20.00	-4.00	348.66	335.11	25.73	
3100.00	3068.28	3068.28	3068.28	9.62	6.76	183.14	-20.00	-4.00	366.85	352.82	26.15	
3200.00	3166.61	3166.61	3166.61	10.02	6.98	182.99	-20.00	-4.00	385.04	370.54	26.55	
3300.00	3264.94	3264.94	3264.94	10.43	7.20	182.86	-20.00	-4.00	403.24	388.26	26.92	
3400.00	3363.26	3363.26	3363.26	10.83	7.42	182.74	-20.00	-4.00	421.43	405.98	27.27	
3500.00	3461.59	3461.59	3461.59	11.23	7.64	182.62	-20.00	-4.00	439.63	423.70	27.59	
3600.00	3559.92	3559.92	3559.92	11.64	7.86	182.52	-20.00	-4.00	457.83	441.42	27.90	
3700.00	3658.24	3658.24	3658.24	12.04	8.09	182.42	-20.00	-4.00	476.03	459.14	28.19	
3800.00	3756.57	3756.57	3756.57	12.45	8.31	182.33	-20.00	-4.00	494.24	476.87	28.46	
3900.00	3854.89	3854.89	3854.89	12.86	8.53	182.25	-20.00	-4.00	512.44	494.60	28.72	
4000.00	3953.22	3953.22	3953.22	13.26	8.75	182.17	-20.00	-4.00	530.64	512.32	28.96	
4100.00	4051.55	4051.55	4051.55	13.67	8.97	182.10	-20.00	-4.00	548.85	530.05	29.19	
4200.00	4149.87	4149.87	4149.87	14.08	9.19	182.03	-20.00	-4.00	567.06	547.78	29.41	
4300.00	4248.20	4248.20	4248.20	14.48	9.41	181.97	-20.00	-4.00	585.26	565.51	29.62	
4400.00	4346.53	4346.53	4346.53	14.89	9.63	181.91	-20.00	-4.00	603.47	583.24	29.82	
4500.00	4444.85	4444.85	4444.85	15.30	9.85	181.85	-20.00	-4.00	621.68	600.97	30.01	
4600.00	4543.18	4558.38	4558.37	15.70	10.11	181.84	-20.05	-5.07	639.14	617.91	30.11	
4700.00	4641.51	4681.48	4681.31	16.11	10.39	182.04	-20.30	-11.07	653.17	631.41	30.03	
4800.00	4739.83	4805.56	4804.86	16.52	10.67	182.46	-20.78	-22.46	663.49	641.22	29.79	
4900.00	4838.16	4910.03	4908.56	16.93	10.92	182.94	-21.31	-35.08	671.33	648.55	29.48	
5000.00	4936.49	5009.58	5007.37	17.34	11.16	183.39	-21.83	-47.20	679.13	655.85	29.18	
5100.00	5034.81	5109.14	5106.19	17.75	11.40	183.82	-22.34	-59.33	686.97	663.19	28.89	
5200.00	5133.14	5208.70	5205.00	18.15	11.65	184.25	-22.85	-71.45	694.86	670.57	28.61	
5300.00	5231.47	5308.25	5303.82	18.56	11.90	184.67	-23.36	-83.58	702.77	677.98	28.35	
5400.00	5329.79	5407.81	5402.63	18.97	12.15	185.08	-23.87	-95.70	710.73	685.43	28.09	
5500.00	5428.12	5507.36	5501.44	19.38	12.41	185.48	-24.39	-107.83	718.72	692.90	27.84	
5600.00	5526.45	5606.92	5600.26	19.79	12.67	185.87	-24.90	-119.95	726.75	700.41	27.60	
5700.00	5624.77	5706.48	5699.07	20.20	12.93	186.25	-25.41	-132.07	734.81	707.95	27.36	
5800.00	5723.10	5806.03	5797.88	20.61	13.19	186.62	-25.92	-144.20	742.90	715.52	27.14	
5900.00	5821.43	5905.59	5896.70	21.02	13.46	186.99	-26.43	-156.32	751.02	723.12	26.92	
6000.00	5919.75	6005.14	5995.51	21.43	13.73	187.35	-26.95	-168.45	759.17	730.74	26.70	
6100.00	6018.08	6104.70	6094.32	21.84	14.00	187.70	-27.46	-180.57	767.35	738.39	26.50	
6200.00	6116.41	6204.26	6193.14	22.24	14.28	188.04	-27.97	-192.70	775.55	746.06	26.30	
6300.00	6214.92	6303.88	6292.02	22.54	14.55	188.38	-28.48	-204.83	782.76	752.79	26.12	
6400.00	6313.71	6403.61	6391.00	22.83	14.83	188.73	-29.00	-216.98	788.28	757.84	25.90	
6500.00	6412.76	6498.63	6485.34	23.09	15.08	189.07	-29.48	-228.39	792.25	761.37	25.65	
6600.00	6512.03	6588.53	6574.72	23.34	15.26	189.36	-29.88	-237.97	795.61	764.36	25.46	
6700.00	6611.50	6678.45	6664.27	23.56	15.43	189.60	-30.23	-246.14	798.53	766.91	25.26	
6800.00	6711.13	6768.42	6753.98	23.77	15.61	189.80	-30.51	-252.92	800.98	769.02	25.06	
6900.00	6810.90	6858.40	6843.80	23.96	15.77	189.96	-30.74	-258.29	802.97	770.68	24.87	
7000.00	6910.77	6948.41	6933.72	24.13	15.94	190.07	-30.91	-262.25	804.48	771.88	24.67	
7100.00	7010.71	7038.43	7023.70	24.28	16.10	190.14	-31.02	-264.79	805.52	772.61	24.48	
7200.00	7110.70	7128.45	7113.72	24.41	16.25	190.18	-31.06	-265.93	806.07	772.88	24.29	
7300.00	7210.70	7225.43	7210.70	24.53	16.44	125.65	-31.07	-265.99	806.16	767.84	21.04	
7400.00	7310.70	7325.43	7310.70	24.67	16.65	125.65	-31.07	-265.99	806.16	767.47	20.84	
7500.00	7410.70	7425.43	7410.70	24.82	16.87	125.65	-31.07	-265.99	806.16	767.10	20.64	
7600.00	7510.70	7525.43	7510.70	24.96	17.08	125.65	-31.07	-265.99	806.16	766.73	20.45	
7700.00	7610.70	7625.43	7610.70	25.10	17.30	125.65	-31.07	-265.99	806.16	766.36	20.25	
7800.00	7710.70	7725.43	7710.70	25.25	17.51	125.65	-31.07	-265.99	806.16	765.98	20.06	

Weatherford International, Ltd.

Anticollision Report

Company:	BERRY PETROLEUM COMPANY	Date:	8/16/2007	Time:	09:18:43	Page:	5
Field:	GARFIELD COUNTY (NAD 83)	Co-ordinate(NE) Reference:	Well: OM12B M15 696, True North				
Reference Site:	SCHOOL HOUSE POINT M15 PAD	Vertical (TVD) Reference:	SITE 8413.0				
Reference Well:	OM12B M15 696						
Reference Wellpath:	1	Db: Sybase					

Site: SCHOOL HOUSE POINT M15 PAD
 Well: OM12D M15 696
 Wellpath: 1 V0 Plan: Plan #1 V1

Inter-Site Error: 0.00 ft

Reference		Offset		Semi-Major Axis			Offset Location		Ctr-Ctr Distance	Edge Distance	Separation Factor	Warning
MD	TVD	MD	TVD	Ref	Offset	TFO-HS	North	East				
ft	ft	ft	ft	ft	ft	deg	ft	ft	ft	ft		
7900.00	7810.70	7825.43	7810.70	25.40	17.73	125.65	-31.07	-265.99	806.16	765.60	19.88	
8000.00	7910.70	7925.43	7910.70	25.54	17.94	125.65	-31.07	-265.99	806.16	765.22	19.69	
8100.00	8010.70	8025.43	8010.70	25.69	18.16	125.65	-31.07	-265.99	806.16	764.84	19.51	
8200.00	8110.70	8125.43	8110.70	25.84	18.38	125.65	-31.07	-265.99	806.16	764.46	19.34	
8300.00	8210.70	8225.43	8210.70	25.99	18.59	125.65	-31.07	-265.99	806.16	764.08	19.16	
8400.00	8310.70	8325.43	8310.70	26.15	18.81	125.65	-31.07	-265.99	806.16	763.70	18.99	
8500.00	8410.70	8425.43	8410.70	26.30	19.03	125.65	-31.07	-265.99	806.16	763.32	18.82	
8600.00	8510.70	8525.43	8510.70	26.46	19.24	125.65	-31.07	-265.99	806.16	762.93	18.65	
8700.00	8610.70	8625.43	8610.70	26.61	19.46	125.65	-31.07	-265.99	806.16	762.54	18.48	
8800.00	8710.70	8725.43	8710.70	26.77	19.68	125.65	-31.07	-265.99	806.16	762.16	18.32	
8900.00	8810.70	8825.43	8810.70	26.92	19.90	125.65	-31.07	-265.99	806.16	761.77	18.16	
9000.00	8910.70	8925.43	8910.70	27.08	20.12	125.65	-31.07	-265.99	806.16	761.38	18.00	
9100.00	9010.70	9025.43	9010.70	27.24	20.33	125.65	-31.07	-265.99	806.16	760.99	17.85	
9200.00	9110.70	9125.43	9110.70	27.40	20.55	125.65	-31.07	-265.99	806.16	760.60	17.69	
9300.00	9210.70	9225.43	9210.70	27.56	20.77	125.65	-31.07	-265.99	806.16	760.20	17.54	
9400.00	9310.70	9325.43	9310.70	27.73	20.99	125.65	-31.07	-265.99	806.16	759.81	17.39	
9500.00	9410.70	9425.43	9410.70	27.89	21.21	125.65	-31.07	-265.99	806.16	759.42	17.25	
9600.00	9510.70	9525.43	9510.70	28.05	21.43	125.65	-31.07	-265.99	806.16	759.02	17.10	
9700.00	9610.70	9625.43	9610.70	28.22	21.65	125.65	-31.07	-265.99	806.16	758.63	16.96	
9800.00	9710.70	9725.43	9710.70	28.38	21.86	125.65	-31.07	-265.99	806.16	758.23	16.82	
9900.00	9810.70	9825.43	9810.70	28.55	22.08	125.65	-31.07	-265.99	806.16	757.83	16.68	
10000.00	9910.70	9925.43	9910.70	28.71	22.30	125.65	-31.07	-265.99	806.16	757.43	16.55	
10100.00	10010.70	10025.43	10010.70	28.88	22.52	125.65	-31.07	-265.99	806.16	757.04	16.41	
10200.00	10110.70	10125.43	10110.70	29.05	22.74	125.65	-31.07	-265.99	806.16	756.64	16.28	
10230.30	10141.00	10145.73	10131.00	29.10	22.79	125.65	-31.07	-265.99	806.22	756.60	16.25	