

T5S, R95W, 6th P.M.

BERRY PETROLEUM COMPANY

Well location, MILK CABIN OM11B M32 595, located as shown in the SW 1/4 SW 1/4 of Section 32, T5S, R95W, 6th P.M., Garfield County, Colorado.

BASIS OF ELEVATION

SPOT ELEVATION AT THE NORTHWEST CORNER OF SECTION 30, T5S, R95W, 6th P.M. TAKEN FROM THE FORKED GULCH QUADRANGLE, COLORADO, GARFIELD COUNTY, 7.5 MINUTE SERIES (TOPOGRAPHICAL MAP) PUBLISHED BY THE UNITED STATES DEPARTMENT OF THE INTERIOR, GEOLOGICAL SURVEY. SAID ELEVATION IS MARKED AS BEING 5966 FEET.

BASIS OF BEARINGS

BASIS OF BEARINGS IS A G.P.S. OBSERVATION.

Sheet 1a of 12



SCALE

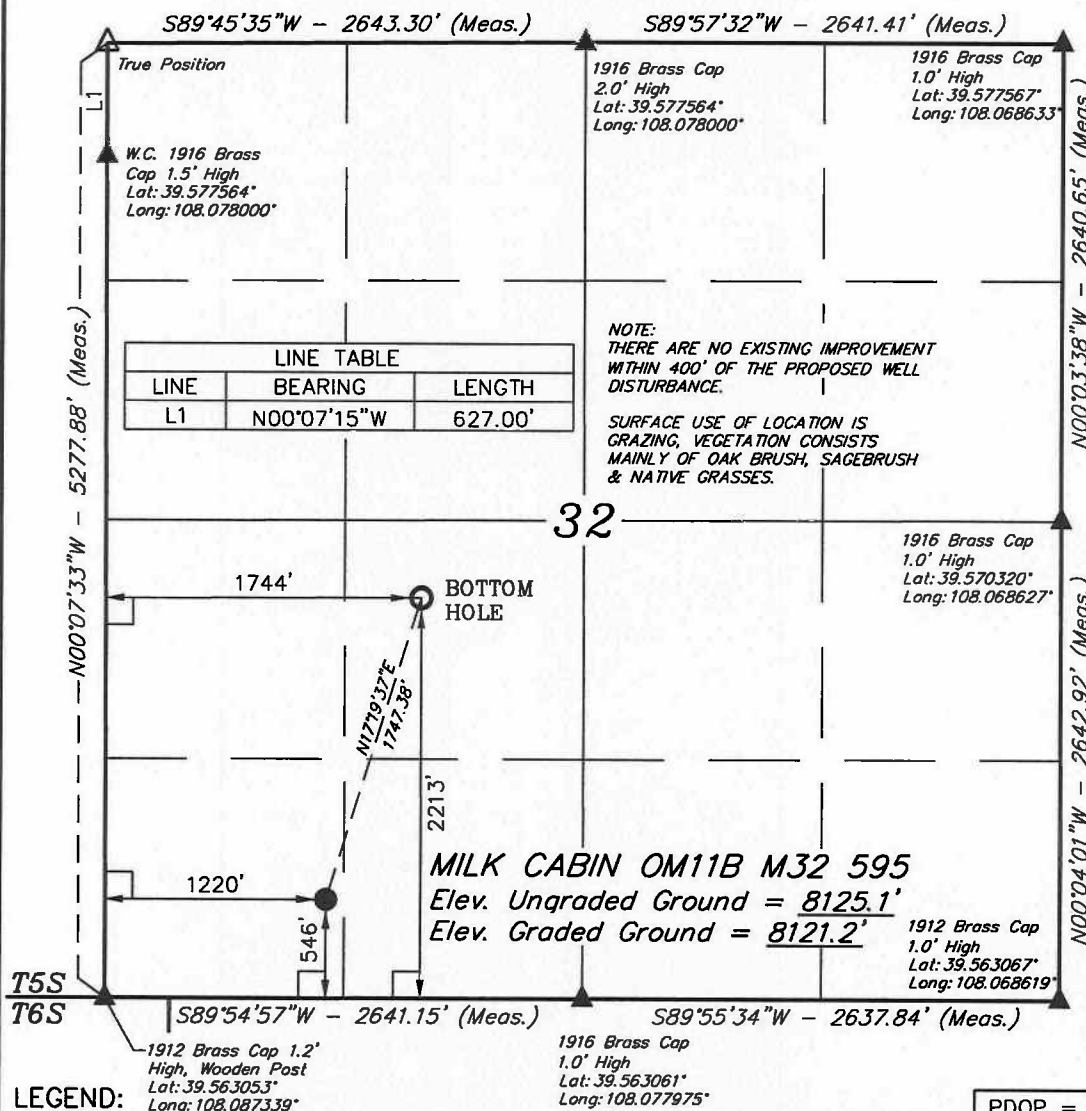
CERTIFICATE

THIS IS TO CERTIFY THAT THE ABOVE PLAT WAS PREPARED FROM FIELD NOTES OF ACTUAL SURVEYS MADE BY ME OR UNDER MY SUPERVISION AND THAT THE SAME ARE TRUE AND CORRECT TO THE BEST OF MY KNOWLEDGE AND BELIEF.

REGISTERED LAND SURVEYOR
REGISTRATION NO. 11402
STATE OF COLORADO

Revised: 06-14-10 D.R.B.
Revised: 06-08-10 D.R.B.

UINTAH ENGINEERING & LAND SURVEYING
85 SOUTH 200 EAST - VERNAL, UTAH 84078
(435) 789-1017



LEGEND:

- = 90° SYMBOL
- = PROPOSED WELL HEAD.
- ▲ = SECTION CORNERS LOCATED.

NAD 83 (TARGET BOTTOM HOLE)	NAD 83 (SURFACE LOCATION)
LATITUDE = 39°34'08.87" (39.569131)	LATITUDE = 39°33'52.39" (39.564553)
LONGITUDE = 108°04'52.21" (108.081169)	LONGITUDE = 108°04'58.86" (108.083017)
NAD 27 (TARGET BOTTOM HOLE)	NAD 27 (SURFACE LOCATION)
LATITUDE = 39°34'08.95" (39.569153)	LATITUDE = 39°33'52.47" (39.564575)
LONGITUDE = 108°04'49.93" (108.080536)	LONGITUDE = 108°04'56.58" (108.082383)

BERRY PETROLEUM COMPANY