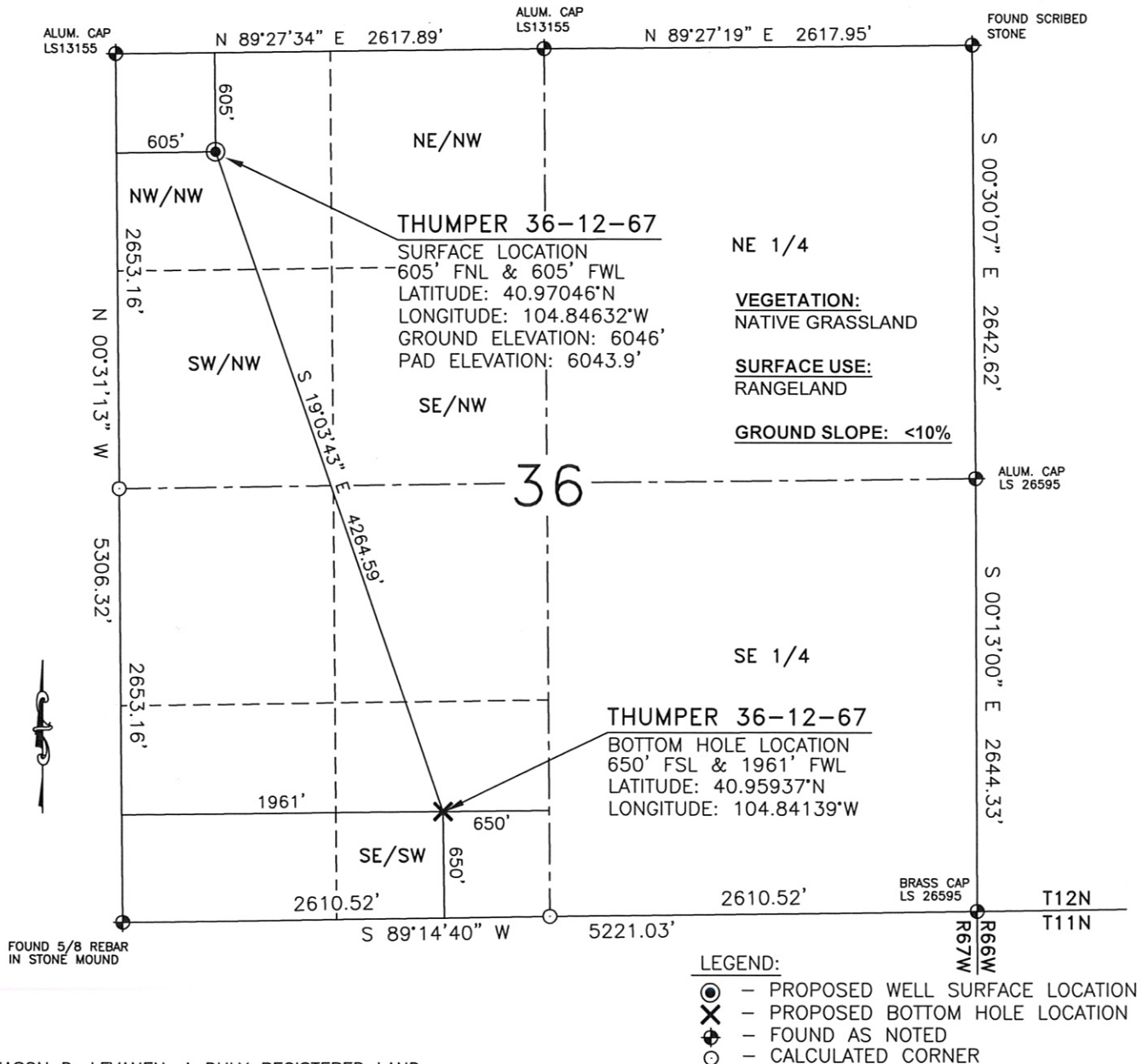
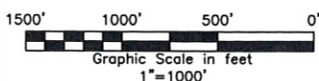


WELL LOCATION MAP

THUMPER 36-12-67



I, JASON D. LEVANEN, A DULY REGISTERED LAND SURVEYOR IN THE STATE OF COLORADO, DO HEREBY CERTIFY THAT THIS PLAT WAS PREPARED FROM NOTES TAKEN DURING A SURVEY PERFORMED BY ME OR UNDER MY SUPERVISION ON APRIL 12, 2010.



WESTERN LAND SERVICES
 Sheridan, WY 82801 (307)673-1817

DP: L:\Slawson\Well Plats\Well_Plats.dwg

Date: 5-18-10

**SLAWSON EXPLORATION
 COMPANY, INC.**
 THUMPER 36-12-67

SL: NW1/4NW1/4, S.36, T12N-R67W
 BL: SE1/4SW1/4, S.36, T12N-R67W
 6TH P.M., WELD COUNTY, COLORADO