

# Map Unit Description

Weld County, Colorado, Southern Part

## 3 Aquolls and Aquents, gravelly substratum

### Setting

Elevation: 4000 to 7200 feet  
Mean annual precipitation: 12 to 18 inches  
Mean annual air temperature: 45 to 55 degrees F  
Frost-free period: 80 to 155 days

### Composition

Aquolls and similar soils: 55 percent  
Aquents, gravelly substratum, and similar soils: 30 percent

### Description of Aquolls

#### Setting

Landform: Swales, streams, flood plains  
Down-slope shape: Linear  
Across-slope shape: Linear  
Parent material: Recent alluvium

#### Properties and Qualities

Slope: 0 to 3 percent  
Drainage class: Poorly drained  
Capacity of the most limiting layer to transmit water (Ksat): Moderately high or high (0.20 to 2.00 in/hr)  
Depth to water table: About 6 to 48 inches  
Frequency of flooding: Frequent  
Frequency of ponding: None  
Calcium carbonate maximum: 0 percent  
Gypsum maximum: 0 percent  
Available water capacity: Moderate (about 8.0 inches)

#### Interpretive Groups

Land capability (non irrigated): 6w  
Ecological site: Salt Meadow (R067BY035CO)

#### Typical Profile

0 to 48 inches: loam  
48 to 60 inches: gravelly sand

### Description of Aquents, gravelly substratum

#### Setting

Landform: Stream terraces  
Down-slope shape: Linear  
Across-slope shape: Linear  
Parent material: Recent alluvium

#### Properties and Qualities

Slope: 0 to 3 percent  
Drainage class: Poorly drained  
Capacity of the most limiting layer to transmit water (Ksat): Moderately high or very high (0.57 to 19.98 in/hr)  
Depth to water table: About 6 to 24 inches  
Frequency of flooding: Frequent  
Frequency of ponding: None  
Calcium carbonate maximum: 10 percent  
Gypsum maximum: 0 percent  
Available water capacity: Moderate (about 6.6 inches)

#### Interpretive Groups

Land capability classification (irrigated): 6w  
Land capability (non irrigated): 6w  
Ecological site: Salt Meadow (R067BY035CO)

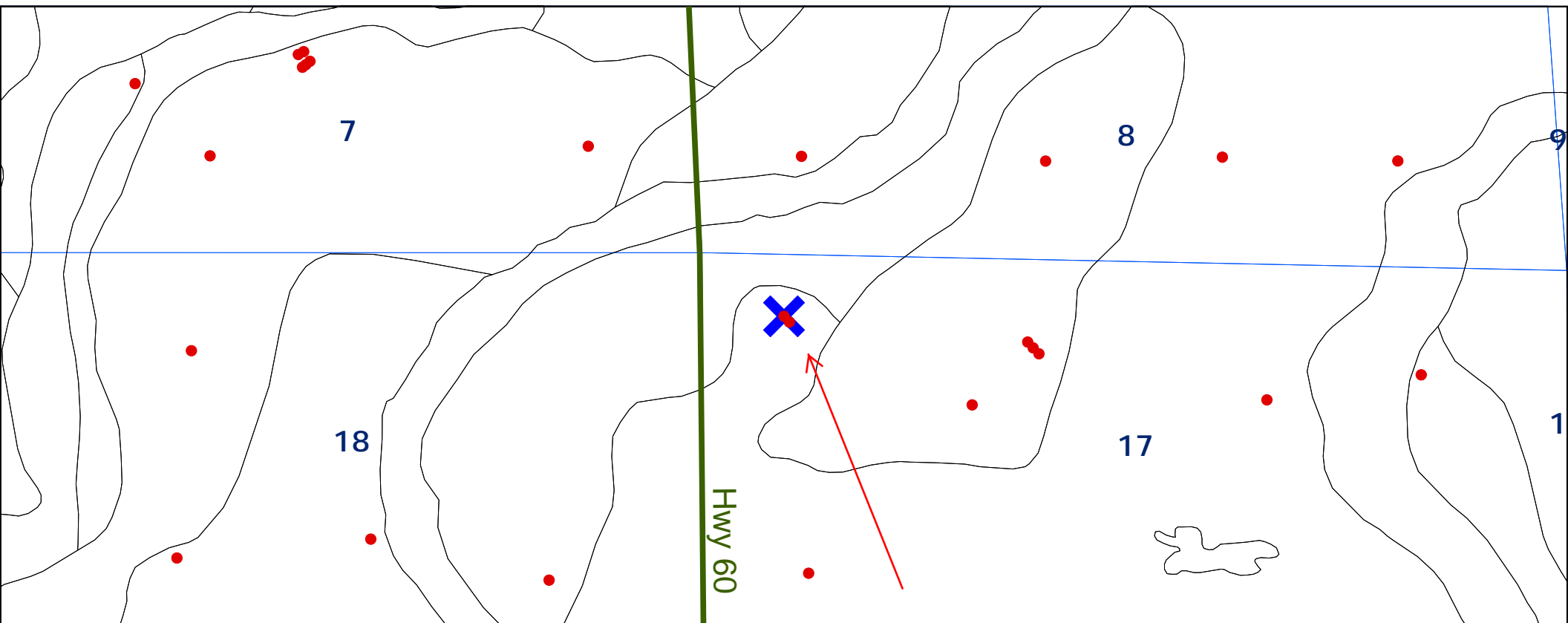
#### Typical Profile

0 to 48 inches: variable  
48 to 60 inches: very gravelly sand

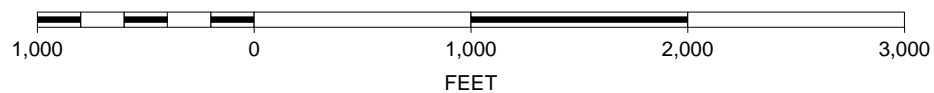
# Map Unit Description

Weld County, Colorado, Southern Part

3, Aquolls and Aquents, gravelly substratum, 0 to 3% slopes



SCALE 1 : 10,626



K. P. Kauffman Company, Inc.

Hodgson #4-17-30

NWNW Section 17-T4N-R66W

Weld Co., Colorado

