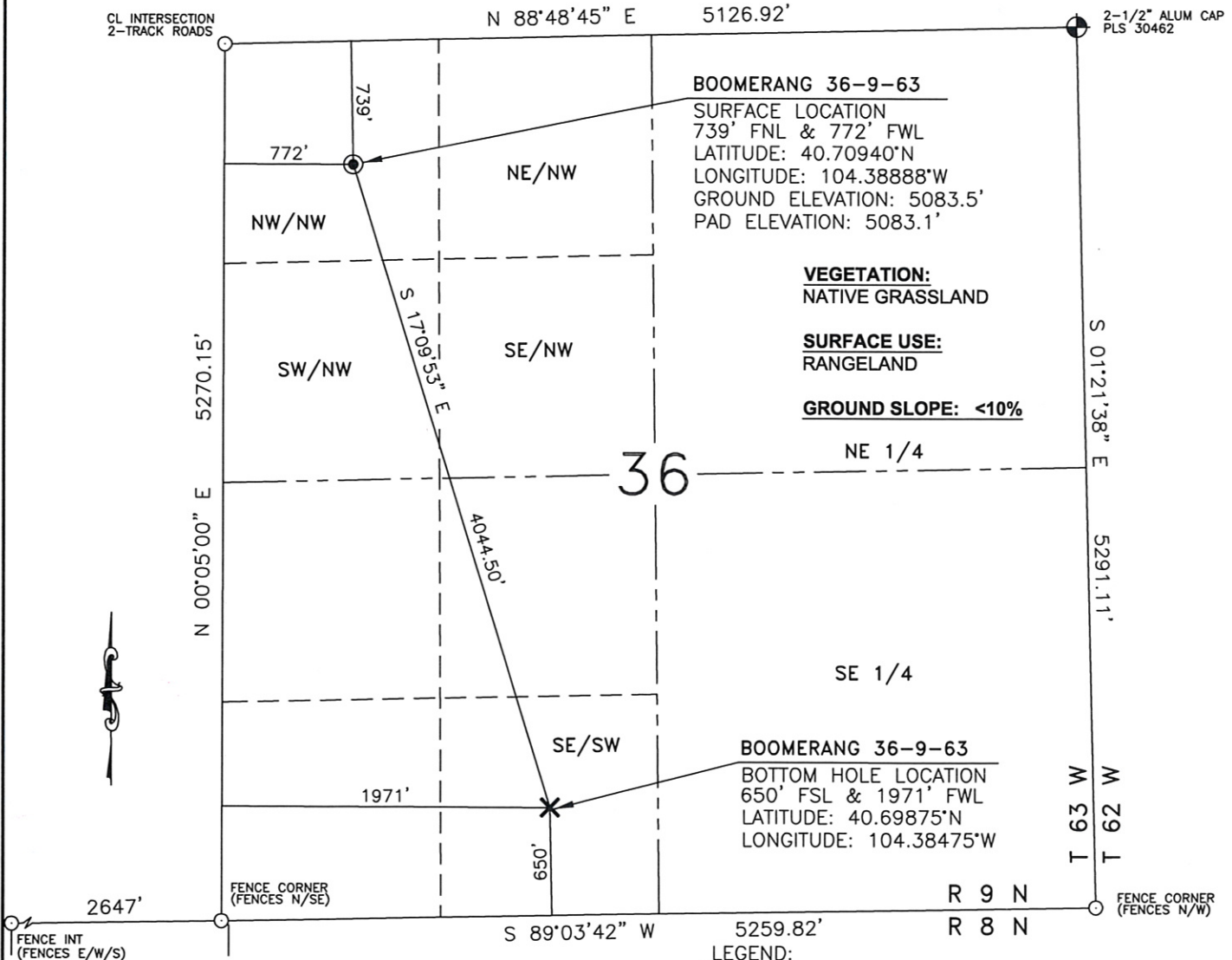


# WELL LOCATION MAP

BOOMERANG 36-9-63



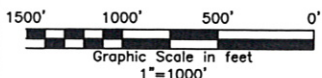
## LEGEND:

- ⊙ - PROPOSED WELL SURFACE LOCATION
- ⊗ - PROPOSED BOTTOM HOLE LOCATION
- ⊕ - FOUND AS NOTED
- - CALCULATED CORNER

## NOTES:

I, JASON D. LEVANEN, A DULY REGISTERED LAND SURVEYOR IN THE STATE OF COLORADO, DO HEREBY CERTIFY THAT THIS PLAT WAS PREPARED FROM NOTES TAKEN DURING A SURVEY PERFORMED BY ME OR UNDER MY SUPERVISION ON JUNE 9, 2010.

- 1) Horizontal and vertical coordinates based from NGS CORS station "COFC", with an elevation of 5285.90'.
  - 2) Basis of bearings are Colorado State Plane north zone. Distances are ground NAD 83, NAVD 88. PAF:1.000251
  - 3) All section line dimensions shown hereon are based on field measurements of existing monuments and/or physical evidence found in the field unless otherwise indicated. refer to land survey plats deposited in Weld County
  - 4) Physical features shown hereon are for graphical representation only.
  - 5) See form 2A for visible improvements within 400' of the wellhead
  - 6) Distances to nearest section lines are measured perpendicularly.
  - 7) This is not a land survey nor land survey plat.
  - 8) Date of survey 6/09/10; Date of Drawing 6/17/10. REV 1
- PDOP Reading 1.6 Instrument operator : Clayton Rosenlund.



WESTERN LAND SERVICES

Sheridan, WY 82801 (307)673-1817

DP: L:\S\Slawson\Well Plats\Well\_Plats.dwg

Date: 6/17/10

SLAWSON EXPLORATION  
COMPANY, INC.  
BOOMERANG 36-9-63

SL: NW1/4NW1/4, S.36, T9N-R63W  
BL: SE1/4SW1/4, S.36, T9N-R63W  
6TH P.M., WELD COUNTY, COLORADO