

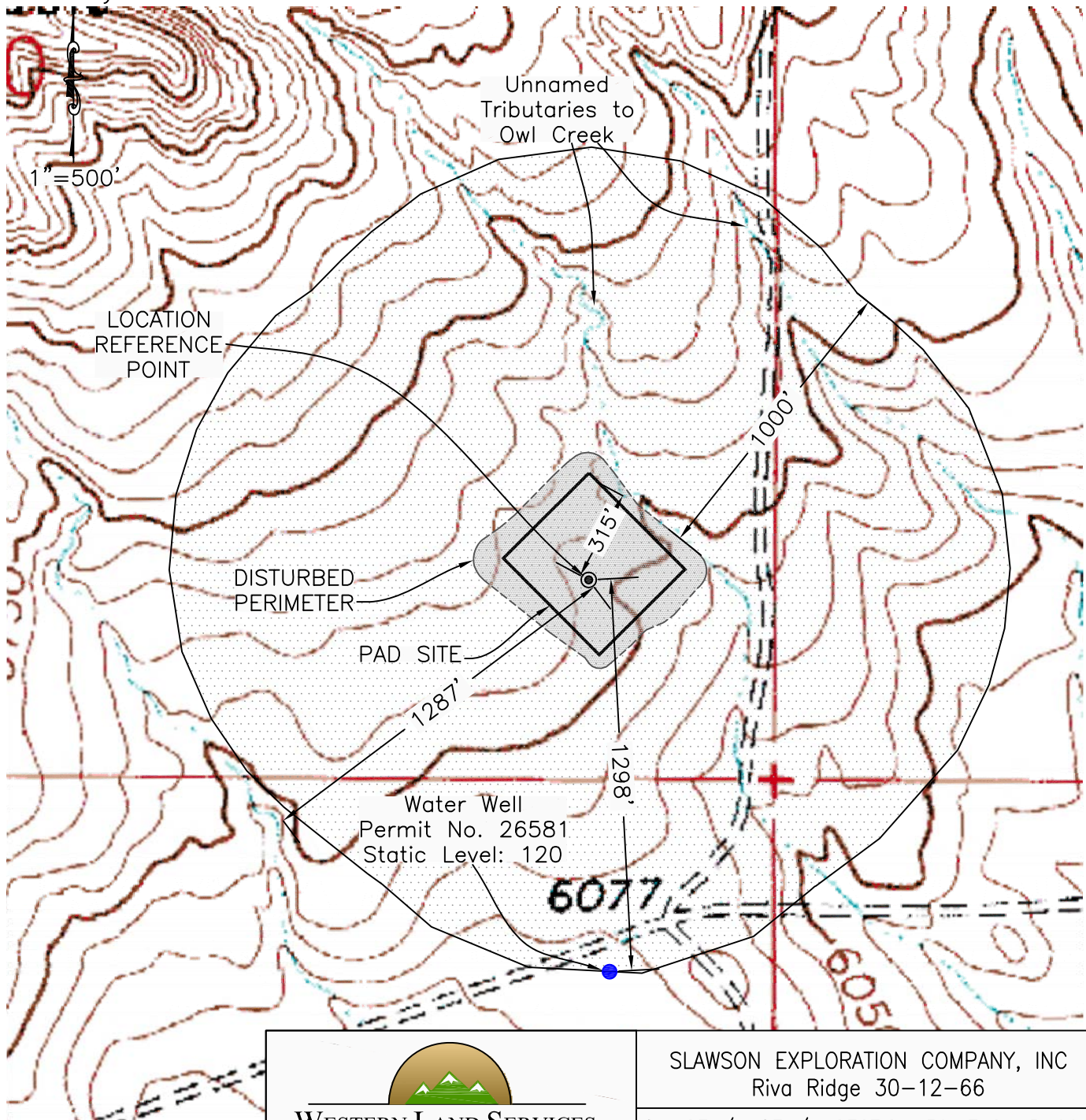
Hydrology Map

Western Land Surveying of Sheridan, Wyoming, in accordance with a request from Slawson Exploration Company, Inc, has determined the location of Riva Ridge 30-12-66 to be 605 feet FSL, and 605 feet FEL, (90° off Section Lines) of Section 30, Township 12N, Range 66W, of the 6th Principal Meridian, Weld County, Colorado.

Date: Staked on 4/30/2010, drawn on 5/20/2010, revised on 6/22/2010

Staked by: Jason Levanen

Drawn by: Heather Hairston




WESTERN LAND SERVICES
Sheridan, WY 82801 (307)673-1817

SLAWSON EXPLORATION COMPANY, INC
Riva Ridge 30-12-66

SL: SE1/4 SE1/4 SECTION 30, T12N R 66W
BL: NW1/4 NE1/4 SECTION 30, T12N R66W
6TH PM, WELD COUNTY, COLORADO

DP: L:\Slawson\Permitting_Booklets\Riva_R...Date: 5/20/2010