

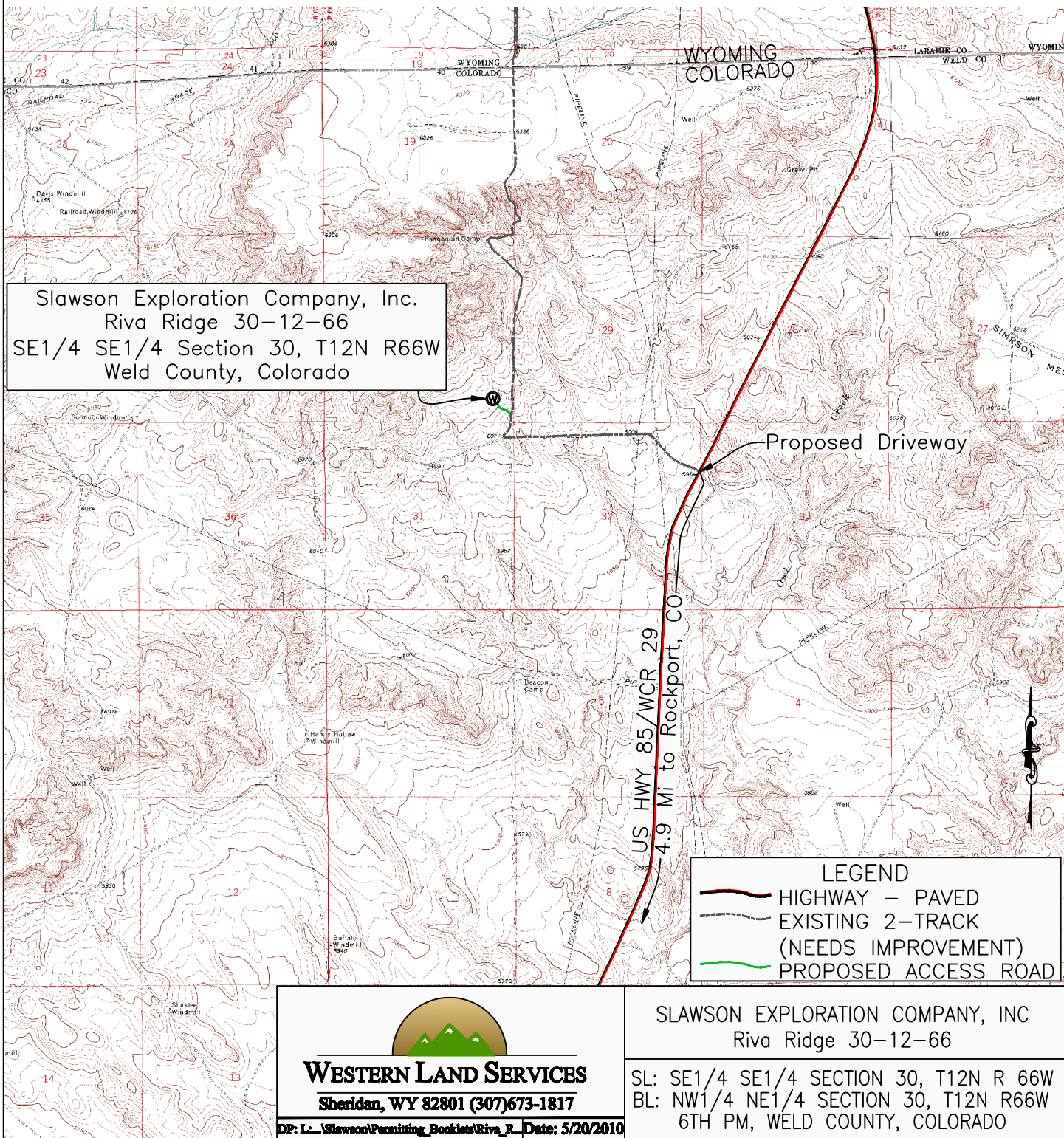
Access Road Map

Western Land Surveying of Sheridan, Wyoming, in accordance with a request from Slawson Exploration Company, Inc, has determined the location of Riva Ridge 30-12-66 to be 605 feet FSL, and 605 feet FEL, (90' off Section Lines) of Section 30, Township 12N, Range 66W, of the 6th Principal Meridian, Weld County, Colorado.

Date: Staked on 4/30/2010, drawn on 5/20/2010

Staked by: Jason Levanen

Drawn by: Heather Hairston



Slawson Exploration Company, Inc.
Riva Ridge 30-12-66
SE1/4 SE1/4 Section 30, T12N R66W
Weld County, Colorado

LEGEND
— HIGHWAY - PAVED
— EXISTING 2-TRACK
(NEEDS IMPROVEMENT)
— PROPOSED ACCESS ROAD


WESTERN LAND SERVICES
Sheridan, WY 82801 (307)673-1817
DP: L... (SlawsonPermitting Booklet/Riva R... Date: 5/20/2010

SLAWSON EXPLORATION COMPANY, INC
Riva Ridge 30-12-66
SL: SE1/4 SE1/4 SECTION 30, T12N R 66W
BL: NW1/4 NE1/4 SECTION 30, T12N R66W
6TH PM, WELD COUNTY, COLORADO