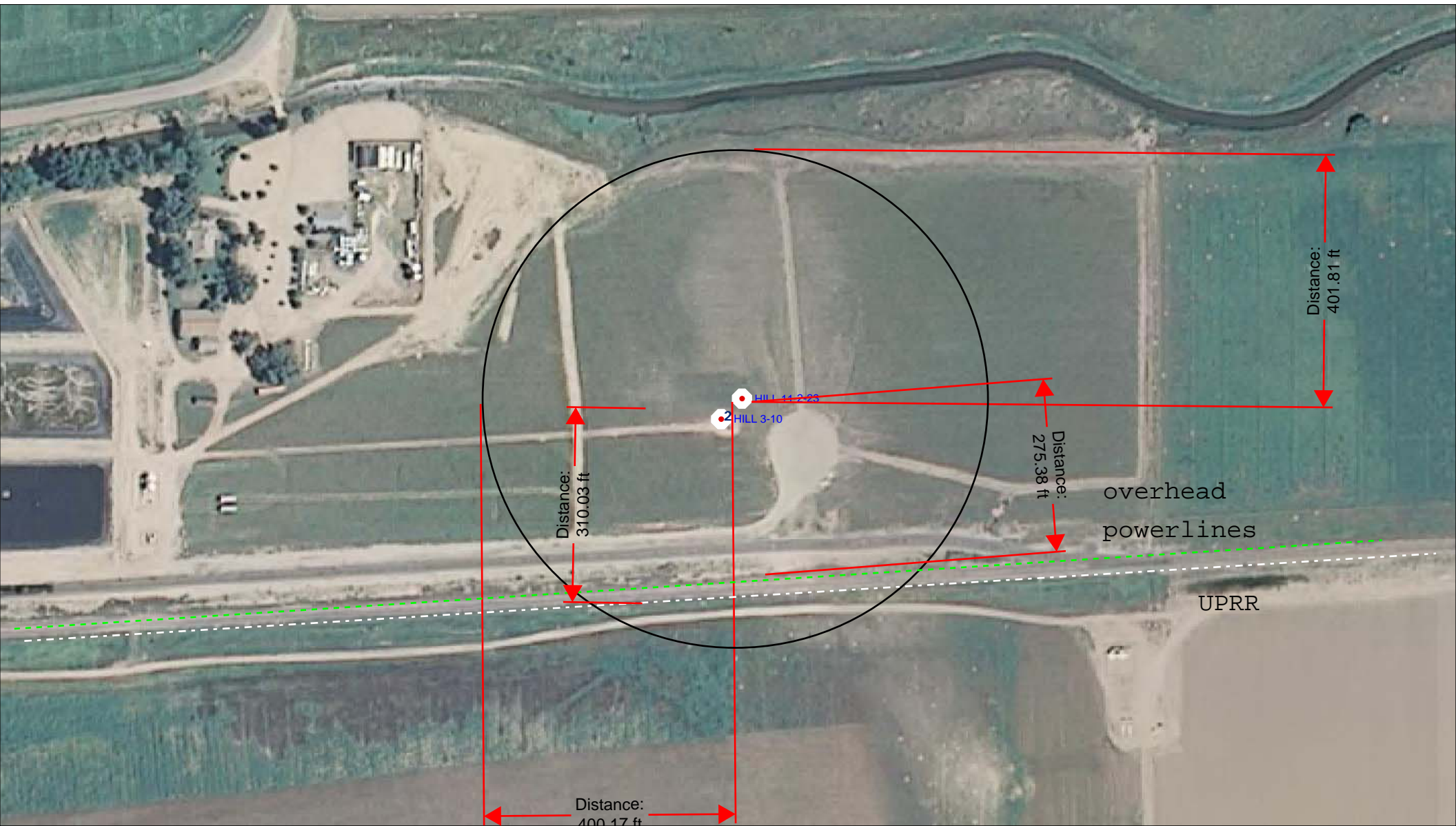


Visible improvements in 400': UPRR bearing S at 310 feet, over head power lines bearing S at 275 feet, lease access road negotiated by SUA



SCALE 1 : 2,535



K. P. Kauffman Company, Inc.  
Well location map, visible improvements in 400'  
Hill #3-10 well pad  
NESW section 2-T4N-R66W  
Weld Co., Colorado

