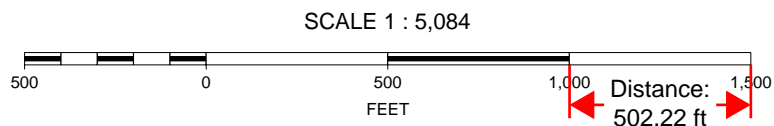
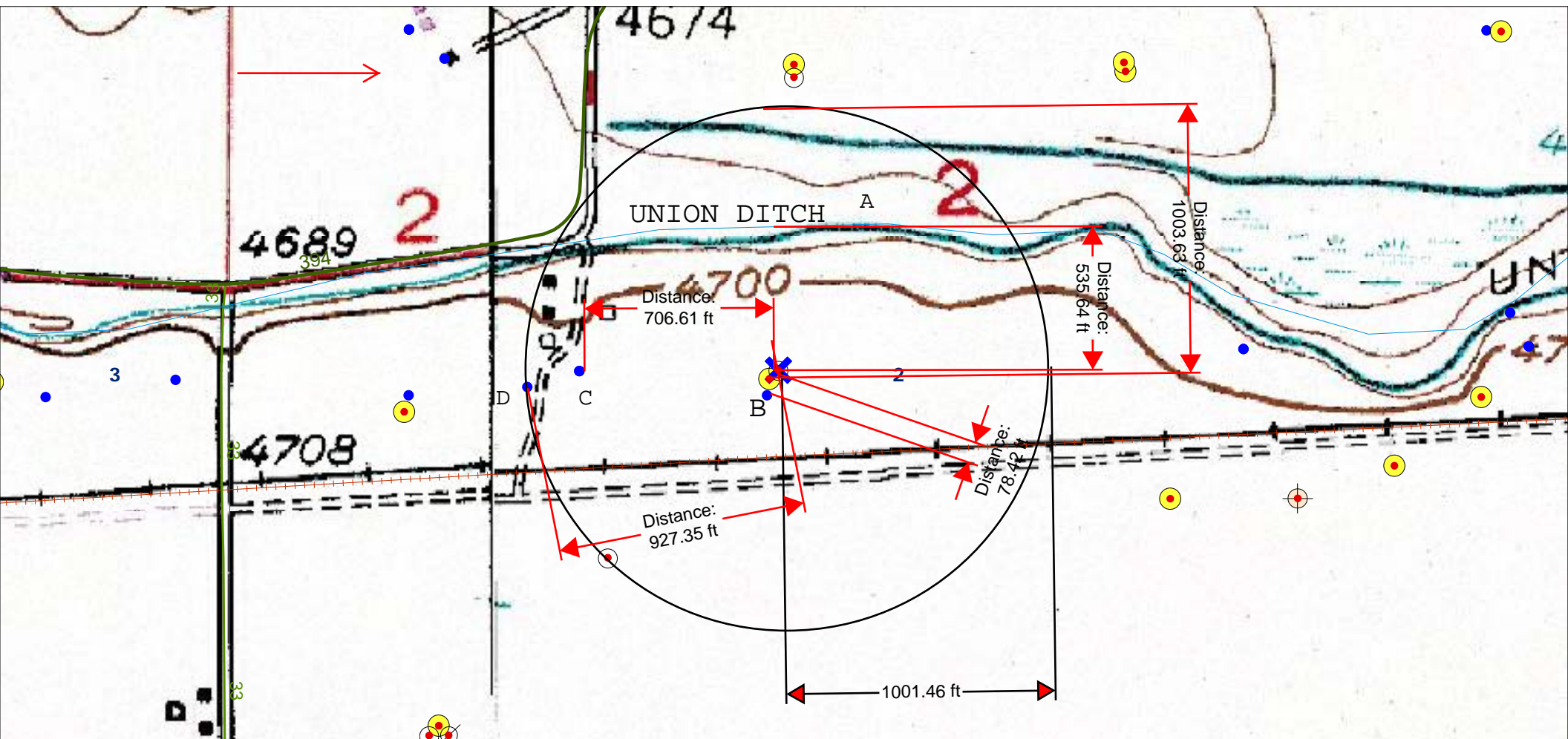


A. Union Ditch bearing N at 536 ft., B. water well bearing SW at 78 ft., C. water well bearing W at 707 ft., D. water well bearing W at 927 ft.



K. P. Kauffman Company, Inc.

Hydrology map; surface waters and water wells

Hill #3-10 well pad

NESW section 2-T4N-R66W

Weld Co., Colorado

