

EnCana Oil & Gas (USA) INC.

T4S, R96W, 6th P.M.

Well location, SGU 8508C-25 F25 496, located as shown in the SE 1/4 NW 1/4 of Section 25, T4S, R96W, 6th P.M., Garfield County, Colorado.

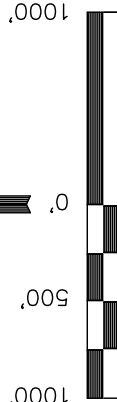
BASIS OF ELEVATION

BENCH MARK (H79) LOCATED IN THE NE 1/4 OF SECTION 25, T4S, R98W, 6th P.M. TAKEN FROM THE BULL FORK QUADRANGLE, COLORADO, 7.5 MINUTE SERIES (TOPO GRAPHICAL MAP) PUBLISHED BY THE UNITED STATES DEPARTMENT OF THE INTERIOR, GEOLOGICAL SURVEY. SAID ELEVATION IS MARKED AS BEING 8535 FEET.

BASIS OF BEARINGS

BASIS OF BEARINGS IS A G.P.S. OBSERVATION.

Sheet 1bb of 11



S C A L E

CERTIFICATE

THIS IS TO CERTIFY THAT THE ABOVE PLAT WAS PREPARED FROM FIELD NOTES OF ACTUAL SURVEYS MADE BY ME OR UNDER MY SUPERVISION AND THAT THE SAME ARE TRUE AND CORRECT TO THE BEST OF MY KNOWLEDGE AND BELIEF.

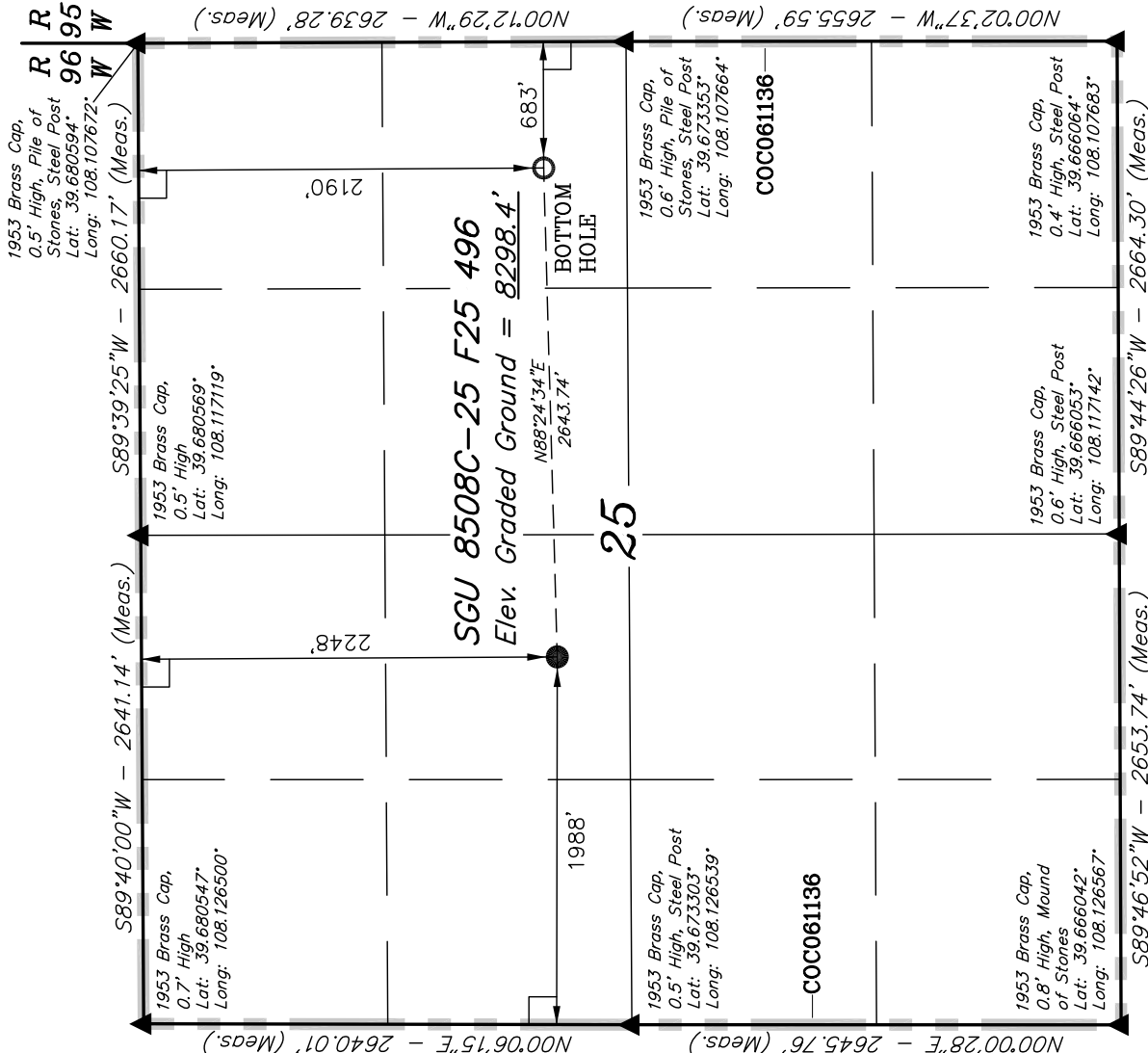


UNTAH ENGINEERING & LAND SURVEYING

85 SOUTH 200 EAST - VERNAL, UTAH 84078

(435) 789-1017

| | | |
|---------------------------|----------------------------|-----------------------------|
| SCALE 1" = 1000' | DATE SURVEYED: 08-07-09 | DATE DRAWN: 03-23-10 |
| PARTY D.K. J.R. D.R.B. | REFERENCES G.L.O. PLAT | |
| WEATHER COLD | FILE | |
| | | EnCana Oil & Gas (USA) INC. |



LEGEND:

- = 90° SYMBOL
- = PROPOSED WELL HEAD.
- ▲ = SECTION CORNERS LOCATED.

| | |
|--|--|
| PDOP = 1.4 | |
| NAD 83 (TARGET BOTTOM HOLE) | NAD 83 (SURFACE LOCATION) |
| LATITUDE = 39°40'28.48" (39.674578) | LATITUDE = 39°40'27.83" (39.674397) |
| LONGITUDE = 108°06'36.32" (108.110089) | LONGITUDE = 108°07'10.11" (108.119475) |
| NAD 27 (TARGET BOTTOM HOLE) | NAD 27 (SURFACE LOCATION) |
| LATITUDE = 39°40'28.57" (39.674603) | LATITUDE = 39°40'27.91" (39.674419) |
| LONGITUDE = 108°06'34.04" (108.109456) | LONGITUDE = 108°07'07.82" (108.118839) |