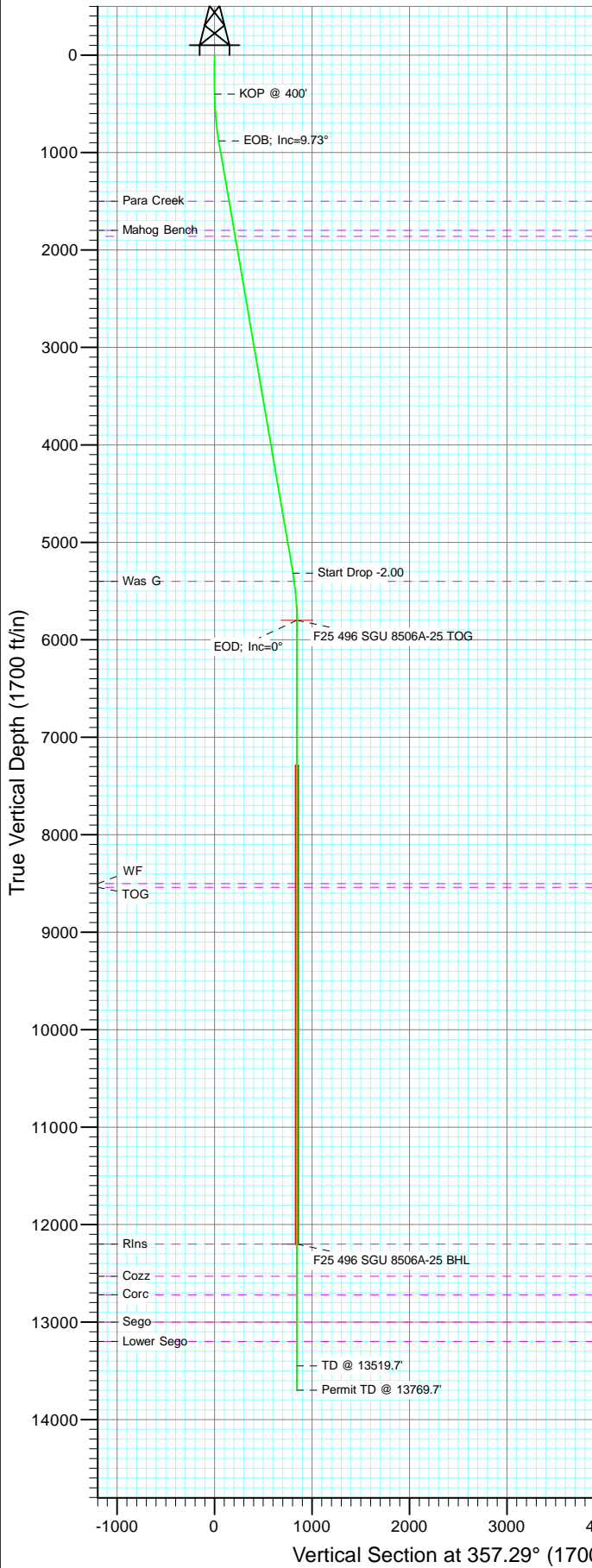


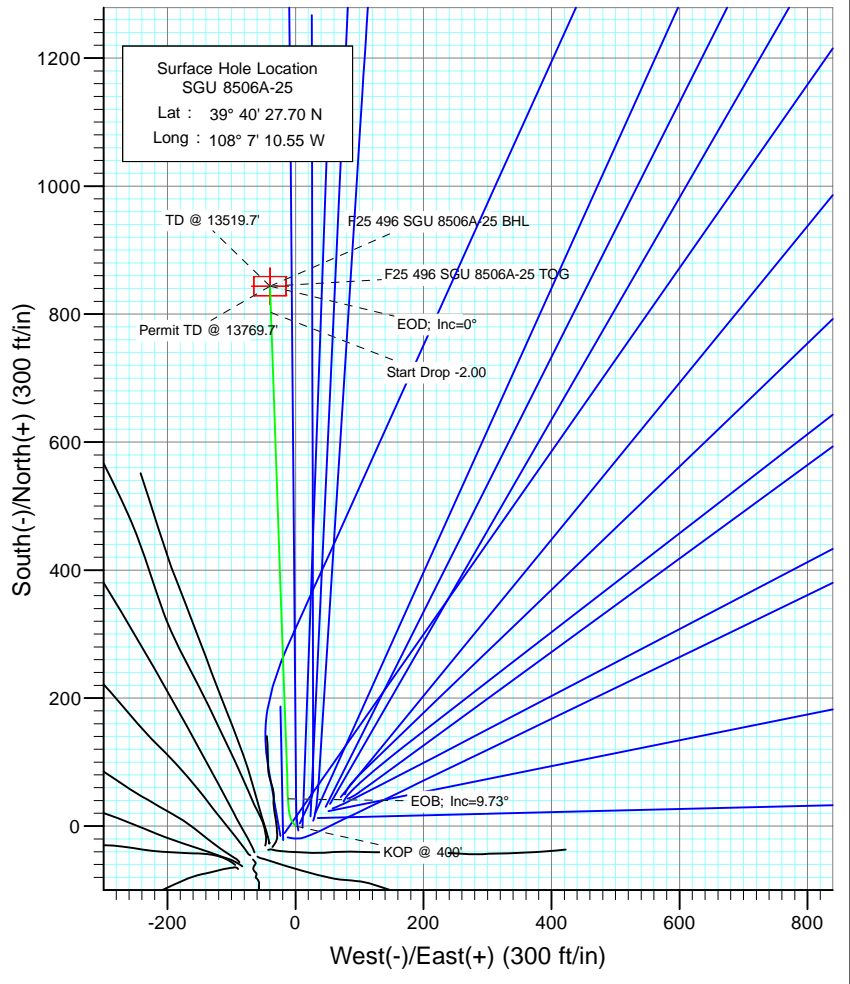


Project: Story Gulch
 Site: F25 496
 Well: SGU 8506A-25
 Wellbore: DD
 Design: Plan #1

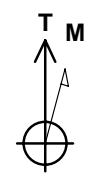


SECTION DETAILS

Sec	MD	Inc	Azi	TVD	+N/-S	+E/-W	Dleg	TFace	Vsect	Target
1	0.0	0.00	0.00	0.0	0.0	0.0	0.00	0.00	0.0	
2	400.0	0.00	0.00	400.0	0.0	0.0	0.00	0.00	0.0	
3	533.3	4.00	320.00	533.2	3.6	-3.0	3.00	320.00	3.7	
4	884.4	9.73	358.00	881.7	42.6	-11.9	2.00	58.36	43.2	
5	5383.1	9.73	358.00	5315.8	802.6	-38.4	0.00	0.00	803.5	
6	5869.7	0.00	0.00	5800.0	843.8	-39.9	2.00	180.00	844.7	F25 496 SGU 8506A-25 TOG
7	12269.7	0.00	0.00	12200.0	843.8	-39.9	0.00	0.00	844.7	F25 496 SGU 8506A-25 BHL
8	13519.7	0.00	0.00	13450.0	843.8	-39.9	0.00	0.00	844.7	
9	13769.7	0.00	0.00	13700.0	843.8	-39.9	0.00	0.00	844.7	



Bottom Hole Location
 SGU 8506A-25
 Lat : 39 40 36.04 N
 Long. : 108 6 11.06 W



Azimuths to True North
 Magnetic North: 10.55°
 Magnetic Field
 Strength: 52453.5nT
 Dip Angle: 65.90°
 Date: 5/6/2010
 Model: IGRF200510

FORMATION TOP DETAILS

TVDPath	MDPath	Formation
1500.0	1511.7	Para Creek
1800.0	1816.0	Mahog Bench
1860.0	1876.9	Base B
5400.0	5468.4	Was G
8500.0	8569.7	TOG
8540.0	8609.7	WF
12200.0	12269.7	Rlns
12530.0	12599.7	Cozz
12720.0	12789.7	Corc
13000.0	13069.7	Sego
13200.0	13269.7	Lower Sego

DESIGN DETAILS: Plan #1
 105XXX; BH
 KBE @ 8320.0ft (Original Well Elev)

Target	Azimuth	Origin	N/S	E/W	From TVD
F25 496 SGU 8506A-25 BHL	357.29	Slot	0.0	0.0	0.0

Cathedral Energy Services

Planning Report

Database: EDM 5000.1 US Multi Users DB	Local Co-ordinate Reference: Well SGU 8506A-25
Company: EnCana Oil & Gas (USA) Inc	TVD Reference: KBE @ 8320.0ft (Original Well Elev)
Project: Story Gulch	MD Reference: KBE @ 8320.0ft (Original Well Elev)
Site: F25 496	North Reference: True
Well: SGU 8506A-25	Survey Calculation Method: Minimum Curvature
Wellbore: DD	
Design: Plan #1	

Project Story Gulch		
Map System: US State Plane 1983	System Datum: Mean Sea Level	
Geo Datum: North American Datum 1983		
Map Zone: Colorado Central Zone		

Site F25 496					
Site Position:		Northing:	1,681,091.06 ft	Latitude:	39° 40' 27.10 N
From:	Lat/Long	Easting:	2,262,632.54 ft	Longitude:	108° 7' 11.76 W
Position Uncertainty:	0.0 ft	Slot Radius:	13.200 in	Grid Convergence:	-1.65 °

Well SGU 8506A-25					
Well Position	+N/-S	0.0 ft	Northing:	1,681,148.89 ft	Latitude: 39° 40' 27.70 N
	+E/-W	0.0 ft	Easting:	2,262,728.53 ft	Longitude: 108° 7' 10.55 W
Position Uncertainty		0.0 ft	Wellhead Elevation:	ft	Ground Level: 8,298.0 ft

Wellbore DD					
Magnetics	Model Name	Sample Date	Declination	Dip Angle	Field Strength
	IGRF200510	5/6/2010	(°) 10.55	(°) 65.90	(nT) 52,454

Design Plan #1					
Audit Notes:					
Version:	Phase:	PLAN	Tie On Depth:	0.0	
Vertical Section:	Depth From (TVD)	+N/-S	+E/-W	Direction	
	(ft)	(ft)	(ft)	(°)	
	0.0	0.0	0.0	357.29	

Plan Sections										
Measured Depth (ft)	Inclination (°)	Azimuth (°)	Vertical Depth (ft)	+N/-S (ft)	+E/-W (ft)	Dogleg Rate (°/100ft)	Build Rate (°/100ft)	Turn Rate (°/100ft)	TFO (°)	Target
0.0	0.00	0.00	0.0	0.0	0.0	0.00	0.00	0.00	0.00	
400.0	0.00	0.00	400.0	0.0	0.0	0.00	0.00	0.00	0.00	
533.3	4.00	320.00	533.2	3.6	-3.0	3.00	3.00	0.00	320.00	
884.4	9.73	358.00	881.7	42.6	-11.9	2.00	1.63	10.83	58.36	
5,383.1	9.73	358.00	5,315.8	802.6	-38.4	0.00	0.00	0.00	0.00	
5,869.7	0.00	0.00	5,800.0	843.8	-39.9	2.00	-2.00	0.00	180.00	F25 496 SGU 8506A-
12,269.7	0.00	0.00	12,200.0	843.8	-39.9	0.00	0.00	0.00	0.00	F25 496 SGU 8506A-
13,519.7	0.00	0.00	13,450.0	843.8	-39.9	0.00	0.00	0.00	0.00	
13,769.7	0.00	0.00	13,700.0	843.8	-39.9	0.00	0.00	0.00	0.00	

Cathedral Energy Services

Planning Report

Database:	EDM 5000.1 US Multi Users DB	Local Co-ordinate Reference:	Well SGU 8506A-25
Company:	EnCana Oil & Gas (USA) Inc	TVD Reference:	KBE @ 8320.0ft (Original Well Elev)
Project:	Story Gulch	MD Reference:	KBE @ 8320.0ft (Original Well Elev)
Site:	F25 496	North Reference:	True
Well:	SGU 8506A-25	Survey Calculation Method:	Minimum Curvature
Wellbore:	DD		
Design:	Plan #1		

Planned Survey									
Measured Depth (ft)	Inclination (°)	Azimuth (°)	Vertical Depth (ft)	+N/-S (ft)	+E/-W (ft)	Vertical Section (ft)	Dogleg Rate (°/100ft)	Build Rate (°/100ft)	Comments / Formations
0.0	0.00	0.00	0.0	0.0	0.0	0.0	0.00	0.00	
100.0	0.00	0.00	100.0	0.0	0.0	0.0	0.00	0.00	
200.0	0.00	0.00	200.0	0.0	0.0	0.0	0.00	0.00	
300.0	0.00	0.00	300.0	0.0	0.0	0.0	0.00	0.00	
400.0	0.00	0.00	400.0	0.0	0.0	0.0	0.00	0.00	KOP @ 400'
500.0	3.00	320.00	500.0	2.0	-1.7	2.1	3.00	3.00	
533.3	4.00	320.00	533.2	3.6	-3.0	3.7	3.00	3.00	
600.0	4.83	333.60	599.7	7.9	-5.7	8.1	2.00	1.25	
700.0	6.41	346.32	699.2	17.1	-8.9	17.5	2.00	1.58	
800.0	8.17	353.83	798.4	29.6	-11.0	30.0	2.00	1.76	
884.4	9.73	358.00	881.8	42.6	-11.9	43.2	2.00	1.85	EOB; Inc=9.73°
900.0	9.73	358.00	897.2	45.3	-12.0	45.8	0.00	0.00	
1,000.0	9.73	358.00	995.7	62.2	-12.6	62.7	0.00	0.00	
1,100.0	9.73	358.00	1,094.3	79.1	-13.2	79.6	0.00	0.00	
1,200.0	9.73	358.00	1,192.8	96.0	-13.8	96.5	0.00	0.00	
1,300.0	9.73	358.00	1,291.4	112.9	-14.4	113.4	0.00	0.00	
1,400.0	9.73	358.00	1,390.0	129.7	-14.9	130.3	0.00	0.00	
1,500.0	9.73	358.00	1,488.5	146.6	-15.5	147.2	0.00	0.00	
1,511.7	9.73	358.00	1,500.0	148.6	-15.6	149.2	0.00	0.00	Para Creek
1,600.0	9.73	358.00	1,587.1	163.5	-16.1	164.1	0.00	0.00	
1,700.0	9.73	358.00	1,685.6	180.4	-16.7	181.0	0.00	0.00	
1,800.0	9.73	358.00	1,784.2	197.3	-17.3	197.9	0.00	0.00	
1,816.0	9.73	358.00	1,800.0	200.0	-17.4	200.6	0.00	0.00	Mahog Bench
1,876.9	9.73	358.00	1,860.0	210.3	-17.8	210.9	0.00	0.00	Base B
1,900.0	9.73	358.00	1,882.8	214.2	-17.9	214.8	0.00	0.00	
2,000.0	9.73	358.00	1,981.3	231.1	-18.5	231.7	0.00	0.00	
2,100.0	9.73	358.00	2,079.9	248.0	-19.1	248.6	0.00	0.00	
2,200.0	9.73	358.00	2,178.4	264.9	-19.7	265.5	0.00	0.00	
2,300.0	9.73	358.00	2,277.0	281.8	-20.3	282.4	0.00	0.00	
2,400.0	9.73	358.00	2,375.6	298.7	-20.8	299.3	0.00	0.00	
2,500.0	9.73	358.00	2,474.1	315.6	-21.4	316.2	0.00	0.00	
2,600.0	9.73	358.00	2,572.7	332.5	-22.0	333.1	0.00	0.00	
2,700.0	9.73	358.00	2,671.3	349.3	-22.6	350.0	0.00	0.00	
2,800.0	9.73	358.00	2,769.8	366.2	-23.2	366.9	0.00	0.00	
2,900.0	9.73	358.00	2,868.4	383.1	-23.8	383.8	0.00	0.00	
3,000.0	9.73	358.00	2,966.9	400.0	-24.4	400.7	0.00	0.00	
3,100.0	9.73	358.00	3,065.5	416.9	-25.0	417.6	0.00	0.00	
3,200.0	9.73	358.00	3,164.1	433.8	-25.6	434.5	0.00	0.00	
3,300.0	9.73	358.00	3,262.6	450.7	-26.2	451.4	0.00	0.00	
3,400.0	9.73	358.00	3,361.2	467.6	-26.7	468.3	0.00	0.00	
3,500.0	9.73	358.00	3,459.7	484.5	-27.3	485.2	0.00	0.00	
3,600.0	9.73	358.00	3,558.3	501.4	-27.9	502.1	0.00	0.00	
3,700.0	9.73	358.00	3,656.9	518.3	-28.5	519.0	0.00	0.00	
3,800.0	9.73	358.00	3,755.4	535.2	-29.1	535.9	0.00	0.00	
3,900.0	9.73	358.00	3,854.0	552.1	-29.7	552.8	0.00	0.00	
4,000.0	9.73	358.00	3,952.5	568.9	-30.3	569.7	0.00	0.00	
4,100.0	9.73	358.00	4,051.1	585.8	-30.9	586.6	0.00	0.00	
4,200.0	9.73	358.00	4,149.7	602.7	-31.5	603.5	0.00	0.00	
4,300.0	9.73	358.00	4,248.2	619.6	-32.1	620.4	0.00	0.00	
4,400.0	9.73	358.00	4,346.8	636.5	-32.6	637.3	0.00	0.00	
4,500.0	9.73	358.00	4,445.4	653.4	-33.2	654.2	0.00	0.00	
4,600.0	9.73	358.00	4,543.9	670.3	-33.8	671.1	0.00	0.00	

Cathedral Energy Services

Planning Report

Database:	EDM 5000.1 US Multi Users DB	Local Co-ordinate Reference:	Well SGU 8506A-25
Company:	EnCana Oil & Gas (USA) Inc	TVD Reference:	KBE @ 8320.0ft (Original Well Elev)
Project:	Story Gulch	MD Reference:	KBE @ 8320.0ft (Original Well Elev)
Site:	F25 496	North Reference:	True
Well:	SGU 8506A-25	Survey Calculation Method:	Minimum Curvature
Wellbore:	DD		
Design:	Plan #1		

Planned Survey									
Measured Depth (ft)	Inclination (°)	Azimuth (°)	Vertical Depth (ft)	+N/-S (ft)	+E/-W (ft)	Vertical Section (ft)	Dogleg Rate (°/100ft)	Build Rate (°/100ft)	Comments / Formations
4,700.0	9.73	358.00	4,642.5	687.2	-34.4	688.0	0.00	0.00	
4,800.0	9.73	358.00	4,741.0	704.1	-35.0	704.9	0.00	0.00	
4,900.0	9.73	358.00	4,839.6	721.0	-35.6	721.9	0.00	0.00	
5,000.0	9.73	358.00	4,938.2	737.9	-36.2	738.8	0.00	0.00	
5,100.0	9.73	358.00	5,036.7	754.8	-36.8	755.7	0.00	0.00	
5,200.0	9.73	358.00	5,135.3	771.7	-37.4	772.6	0.00	0.00	
5,300.0	9.73	358.00	5,233.8	788.5	-37.9	789.5	0.00	0.00	
5,383.1	9.73	358.00	5,315.7	802.6	-38.4	803.5	0.00	0.00	Start Drop -2.00
5,400.0	9.39	358.00	5,332.4	805.4	-38.5	806.3	2.00	-2.00	
5,468.4	8.03	358.00	5,400.0	815.7	-38.9	816.7	2.00	-2.00	Was G
5,500.0	7.39	358.00	5,431.3	820.0	-39.0	820.9	2.00	-2.00	
5,600.0	5.39	358.00	5,530.7	831.1	-39.4	832.0	2.00	-2.00	
5,700.0	3.39	358.00	5,630.4	838.8	-39.7	839.7	2.00	-2.00	
5,800.0	1.39	358.00	5,730.3	842.9	-39.8	843.9	2.00	-2.00	
5,869.7	0.00	358.00	5,800.0	843.8	-39.9	844.7	2.00	-2.00	EOD; Inc=0° - F25 496 SGU 8506A-25 TOG
5,900.0	0.00	0.00	5,830.3	843.8	-39.9	844.7	0.00	0.00	
6,000.0	0.00	0.00	5,930.3	843.8	-39.9	844.7	0.00	0.00	
6,100.0	0.00	0.00	6,030.3	843.8	-39.9	844.7	0.00	0.00	
6,200.0	0.00	0.00	6,130.3	843.8	-39.9	844.7	0.00	0.00	
6,300.0	0.00	0.00	6,230.3	843.8	-39.9	844.7	0.00	0.00	
6,400.0	0.00	0.00	6,330.3	843.8	-39.9	844.7	0.00	0.00	
6,500.0	0.00	0.00	6,430.3	843.8	-39.9	844.7	0.00	0.00	
6,600.0	0.00	0.00	6,530.3	843.8	-39.9	844.7	0.00	0.00	
6,700.0	0.00	0.00	6,630.3	843.8	-39.9	844.7	0.00	0.00	
6,800.0	0.00	0.00	6,730.3	843.8	-39.9	844.7	0.00	0.00	
6,900.0	0.00	0.00	6,830.3	843.8	-39.9	844.7	0.00	0.00	
7,000.0	0.00	0.00	6,930.3	843.8	-39.9	844.7	0.00	0.00	
7,100.0	0.00	0.00	7,030.3	843.8	-39.9	844.7	0.00	0.00	
7,200.0	0.00	0.00	7,130.3	843.8	-39.9	844.7	0.00	0.00	
7,300.0	0.00	0.00	7,230.3	843.8	-39.9	844.7	0.00	0.00	
7,400.0	0.00	0.00	7,330.3	843.8	-39.9	844.7	0.00	0.00	
7,500.0	0.00	0.00	7,430.3	843.8	-39.9	844.7	0.00	0.00	
7,600.0	0.00	0.00	7,530.3	843.8	-39.9	844.7	0.00	0.00	
7,700.0	0.00	0.00	7,630.3	843.8	-39.9	844.7	0.00	0.00	
7,800.0	0.00	0.00	7,730.3	843.8	-39.9	844.7	0.00	0.00	
7,900.0	0.00	0.00	7,830.3	843.8	-39.9	844.7	0.00	0.00	
8,000.0	0.00	0.00	7,930.3	843.8	-39.9	844.7	0.00	0.00	
8,100.0	0.00	0.00	8,030.3	843.8	-39.9	844.7	0.00	0.00	
8,200.0	0.00	0.00	8,130.3	843.8	-39.9	844.7	0.00	0.00	
8,300.0	0.00	0.00	8,230.3	843.8	-39.9	844.7	0.00	0.00	
8,400.0	0.00	0.00	8,330.3	843.8	-39.9	844.7	0.00	0.00	
8,500.0	0.00	0.00	8,430.3	843.8	-39.9	844.7	0.00	0.00	
8,569.7	0.00	0.00	8,500.0	843.8	-39.9	844.7	0.00	0.00	WF
8,600.0	0.00	0.00	8,530.3	843.8	-39.9	844.7	0.00	0.00	
8,609.7	0.00	0.00	8,540.0	843.8	-39.9	844.7	0.00	0.00	TOG
8,700.0	0.00	0.00	8,630.3	843.8	-39.9	844.7	0.00	0.00	
8,800.0	0.00	0.00	8,730.3	843.8	-39.9	844.7	0.00	0.00	
8,900.0	0.00	0.00	8,830.3	843.8	-39.9	844.7	0.00	0.00	
9,000.0	0.00	0.00	8,930.3	843.8	-39.9	844.7	0.00	0.00	
9,100.0	0.00	0.00	9,030.3	843.8	-39.9	844.7	0.00	0.00	
9,200.0	0.00	0.00	9,130.3	843.8	-39.9	844.7	0.00	0.00	
9,300.0	0.00	0.00	9,230.3	843.8	-39.9	844.7	0.00	0.00	

Cathedral Energy Services

Planning Report

Database:	EDM 5000.1 US Multi Users DB	Local Co-ordinate Reference:	Well SGU 8506A-25
Company:	EnCana Oil & Gas (USA) Inc	TVD Reference:	KBE @ 8320.0ft (Original Well Elev)
Project:	Story Gulch	MD Reference:	KBE @ 8320.0ft (Original Well Elev)
Site:	F25 496	North Reference:	True
Well:	SGU 8506A-25	Survey Calculation Method:	Minimum Curvature
Wellbore:	DD		
Design:	Plan #1		

Planned Survey									
Measured Depth (ft)	Inclination (°)	Azimuth (°)	Vertical Depth (ft)	+N/-S (ft)	+E/-W (ft)	Vertical Section (ft)	Dogleg Rate (°/100ft)	Build Rate (°/100ft)	Comments / Formations
9,400.0	0.00	0.00	9,330.3	843.8	-39.9	844.7	0.00	0.00	
9,500.0	0.00	0.00	9,430.3	843.8	-39.9	844.7	0.00	0.00	
9,600.0	0.00	0.00	9,530.3	843.8	-39.9	844.7	0.00	0.00	
9,700.0	0.00	0.00	9,630.3	843.8	-39.9	844.7	0.00	0.00	
9,800.0	0.00	0.00	9,730.3	843.8	-39.9	844.7	0.00	0.00	
9,900.0	0.00	0.00	9,830.3	843.8	-39.9	844.7	0.00	0.00	
10,000.0	0.00	0.00	9,930.3	843.8	-39.9	844.7	0.00	0.00	
10,100.0	0.00	0.00	10,030.3	843.8	-39.9	844.7	0.00	0.00	
10,200.0	0.00	0.00	10,130.3	843.8	-39.9	844.7	0.00	0.00	
10,300.0	0.00	0.00	10,230.3	843.8	-39.9	844.7	0.00	0.00	
10,400.0	0.00	0.00	10,330.3	843.8	-39.9	844.7	0.00	0.00	
10,500.0	0.00	0.00	10,430.3	843.8	-39.9	844.7	0.00	0.00	
10,600.0	0.00	0.00	10,530.3	843.8	-39.9	844.7	0.00	0.00	
10,700.0	0.00	0.00	10,630.3	843.8	-39.9	844.7	0.00	0.00	
10,800.0	0.00	0.00	10,730.3	843.8	-39.9	844.7	0.00	0.00	
10,900.0	0.00	0.00	10,830.3	843.8	-39.9	844.7	0.00	0.00	
11,000.0	0.00	0.00	10,930.3	843.8	-39.9	844.7	0.00	0.00	
11,100.0	0.00	0.00	11,030.3	843.8	-39.9	844.7	0.00	0.00	
11,200.0	0.00	0.00	11,130.3	843.8	-39.9	844.7	0.00	0.00	
11,300.0	0.00	0.00	11,230.3	843.8	-39.9	844.7	0.00	0.00	
11,400.0	0.00	0.00	11,330.3	843.8	-39.9	844.7	0.00	0.00	
11,500.0	0.00	0.00	11,430.3	843.8	-39.9	844.7	0.00	0.00	
11,600.0	0.00	0.00	11,530.3	843.8	-39.9	844.7	0.00	0.00	
11,700.0	0.00	0.00	11,630.3	843.8	-39.9	844.7	0.00	0.00	
11,800.0	0.00	0.00	11,730.3	843.8	-39.9	844.7	0.00	0.00	
11,900.0	0.00	0.00	11,830.3	843.8	-39.9	844.7	0.00	0.00	
12,000.0	0.00	0.00	11,930.3	843.8	-39.9	844.7	0.00	0.00	
12,100.0	0.00	0.00	12,030.3	843.8	-39.9	844.7	0.00	0.00	
12,200.0	0.00	0.00	12,130.3	843.8	-39.9	844.7	0.00	0.00	
12,269.7	0.00	0.00	12,200.0	843.8	-39.9	844.7	0.00	0.00	Rlns - F25 496 SGU 8506A-25 BHL
12,300.0	0.00	0.00	12,230.3	843.8	-39.9	844.7	0.00	0.00	
12,400.0	0.00	0.00	12,330.3	843.8	-39.9	844.7	0.00	0.00	
12,500.0	0.00	0.00	12,430.3	843.8	-39.9	844.7	0.00	0.00	
12,599.7	0.00	0.00	12,530.0	843.8	-39.9	844.7	0.00	0.00	Cozz
12,600.0	0.00	0.00	12,530.3	843.8	-39.9	844.7	0.00	0.00	
12,700.0	0.00	0.00	12,630.3	843.8	-39.9	844.7	0.00	0.00	
12,789.7	0.00	0.00	12,720.0	843.8	-39.9	844.7	0.00	0.00	Corc
12,800.0	0.00	0.00	12,730.3	843.8	-39.9	844.7	0.00	0.00	
12,900.0	0.00	0.00	12,830.3	843.8	-39.9	844.7	0.00	0.00	
13,000.0	0.00	0.00	12,930.3	843.8	-39.9	844.7	0.00	0.00	
13,069.7	0.00	0.00	13,000.0	843.8	-39.9	844.7	0.00	0.00	Sego
13,100.0	0.00	0.00	13,030.3	843.8	-39.9	844.7	0.00	0.00	
13,200.0	0.00	0.00	13,130.3	843.8	-39.9	844.7	0.00	0.00	
13,269.7	0.00	0.00	13,200.0	843.8	-39.9	844.7	0.00	0.00	Lower Sego
13,300.0	0.00	0.00	13,230.3	843.8	-39.9	844.7	0.00	0.00	
13,400.0	0.00	0.00	13,330.3	843.8	-39.9	844.7	0.00	0.00	
13,500.0	0.00	0.00	13,430.3	843.8	-39.9	844.7	0.00	0.00	
13,519.7	0.00	0.00	13,450.0	843.8	-39.9	844.7	0.00	0.00	TD @ 13519.7'
13,600.0	0.00	0.00	13,530.3	843.8	-39.9	844.7	0.00	0.00	
13,700.0	0.00	0.00	13,630.3	843.8	-39.9	844.7	0.00	0.00	
13,769.7	0.00	0.00	13,700.0	843.8	-39.9	844.7	0.00	0.00	

Cathedral Energy Services

Planning Report

Database:	EDM 5000.1 US Multi Users DB	Local Co-ordinate Reference:	Well SGU 8506A-25
Company:	EnCana Oil & Gas (USA) Inc	TVD Reference:	KBE @ 8320.0ft (Original Well Elev)
Project:	Story Gulch	MD Reference:	KBE @ 8320.0ft (Original Well Elev)
Site:	F25 496	North Reference:	True
Well:	SGU 8506A-25	Survey Calculation Method:	Minimum Curvature
Wellbore:	DD		
Design:	Plan #1		

Targets									
Target Name	Dip Angle	Dip Dir.	TVD	+N/-S	+E/-W	Northing	Easting	Latitude	Longitude
- hit/miss target	(°)	(°)	(ft)	(ft)	(ft)	(ft)	(ft)		
- Shape									
F25 496 SGU 8506A-25 - plan hits target center - Point	0.00	0.00	5,800.0	843.8	-39.9	1,681,993.47	2,262,712.99	39° 40' 36.04 N	108° 7' 11.06 W
F25 496 SGU 8506A-25 - plan hits target center - Rectangle (sides W30.0 H50.0 D0.0)	0.00	0.00	12,200.0	843.8	-39.9	1,681,993.47	2,262,712.99	39° 40' 36.04 N	108° 7' 11.06 W

Formations						
Measured Depth	Vertical Depth	Name	Lithology	Dip	Dip Direction	
(ft)	(ft)			(°)	(°)	
1,511.7	1,500.0	Para Creek		0.00		
1,816.0	1,800.0	Mahog Bench		0.00		
1,876.9	1,860.0	Base B		0.00		
5,468.4	5,400.0	Was G		0.00		
8,569.7	8,500.0	WF		0.00		
8,609.7	8,540.0	TOG		0.00		
12,269.7	12,200.0	Rlms		0.00		
12,599.7	12,530.0	Cozz		0.00		
12,789.7	12,720.0	Corc		0.00		
13,069.7	13,000.0	Sego		0.00		
13,269.7	13,200.0	Lower Sego		0.00		

Plan Annotations					
Measured Depth	Vertical Depth	Local Coordinates		Comment	
(ft)	(ft)	+N/-S (ft)	+E/-W (ft)		
400.0	400.0	0.0	0.0	KOP @ 400'	
884.4	881.7	3.6	-3.0	EOB; Inc=9.73°	
5,383.1	5,315.8	42.6	-11.9	Start Drop -2.00	
5,869.7	5,800.0	802.6	-38.4	EOD; Inc=0°	
13,519.7	13,450.0	843.8	-39.9	TD @ 13519.7'	
13,769.7	13,700.0	843.8	-39.9	Permit TD @ 13769.7'	