

EnCana OIL & GAS (USA) INC.

T4S, R96W, 6th P.M.

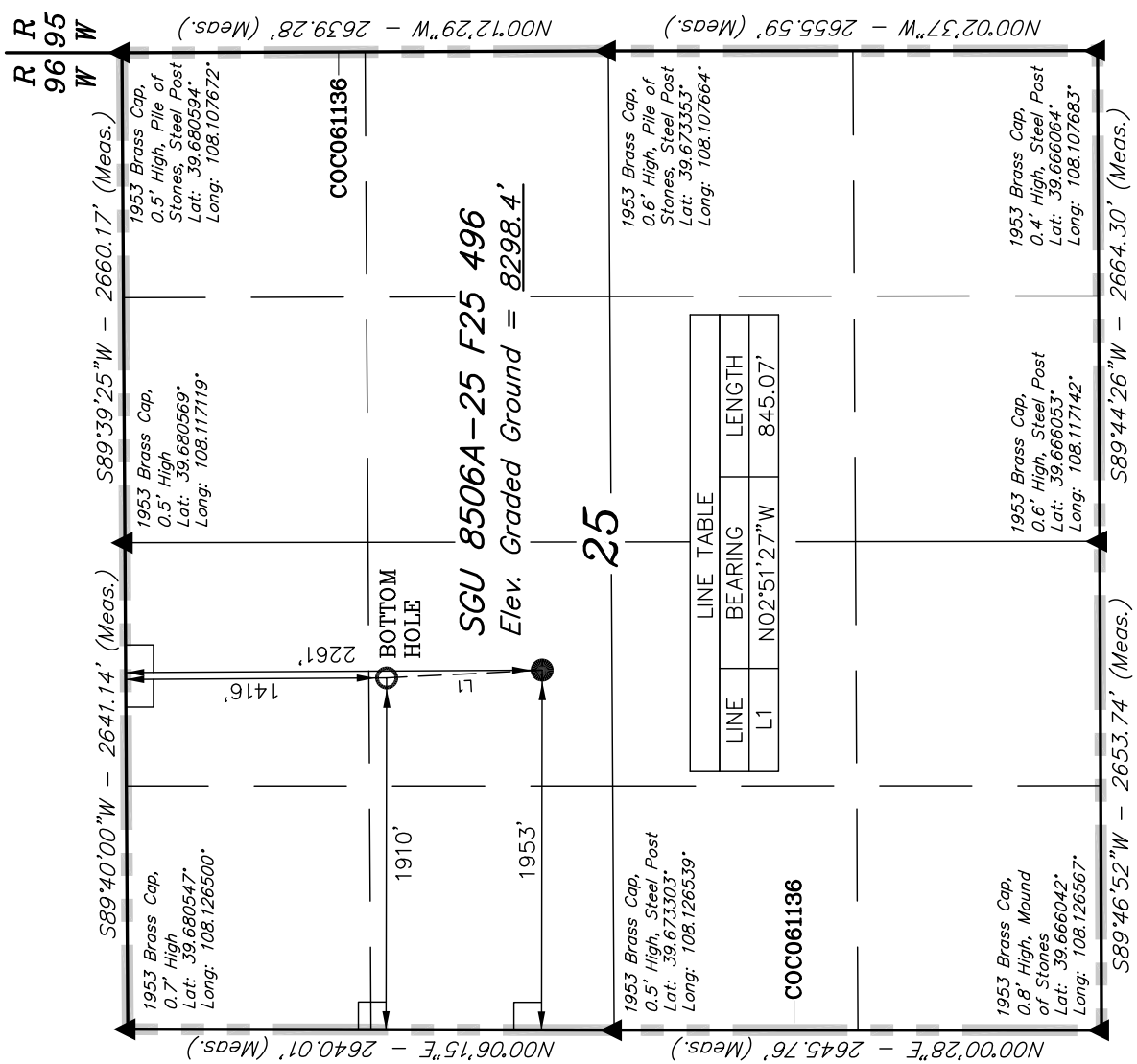
Well location, SGU 8506A-25 F25 496, located as shown in the SE 1/4 NW 1/4 of Section 25, T4S, R96W, 6th P.M., Garfield County, Colorado.

BASIS OF ELEVATION

BENCH MARK (H79) LOCATED IN THE NE 1/4 OF SECTION 25, T4S, R98W, 6th P.M. TAKEN FROM THE BULL FORK QUADRANGLE, COLORADO, 7.5 MINUTE SERIES (TOPOGRAPHICAL MAP) PUBLISHED BY THE UNITED STATES DEPARTMENT OF THE INTERIOR, GEOLOGICAL SURVEY. SAID ELEVATION IS MARKED AS BEING 8535 FEET.

BASIS OF BEARINGS

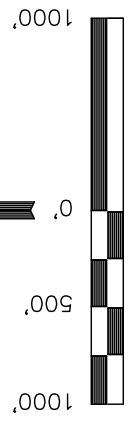
BASIS OF BEARINGS IS A G.P.S. OBSERVATION.



Sheet 1t of 11

R 96 W

R 96 W



CERTIFICATE

THIS IS TO CERTIFY THAT THE ABOVE PLAT WAS PREPARED FROM FIELD NOTES OF ACTUAL SURVEYS MADE BY ME OR UNDER MY SUPERVISION AND THAT THE SAME ARE TRUE AND CORRECT TO THE BEST OF MY KNOWLEDGE AND BELIEF.

[Signature]
 REGISTERED LAND SURVEYOR
 REGISTRATION NO. 17022
 STATE OF COLORADO

UINTAH ENGINEERING & LAND SURVEYING	
85 SOUTH 200 EAST - VERNAL, UTAH 84078 (435) 789-1017	
SCALE 1" = 1000'	DATE SURVEYED: 08-07-09
PARTY D.K. J.R. D.R.B.	DATE DRAWN: 03-23-10
WEATHER COLD	REFERENCES G.L.O. PLAT
	FILE EnCana Oil & Gas (USA) INC.

LEGEND:

- = 90° SYMBOL
- = PROPOSED WELL HEAD.
- ▲ = SECTION CORNERS LOCATED.

PDOP = 1.4

NAD 83 (TARGET BOTTOM HOLE)	NAD 83 (SURFACE LOCATION)
LATITUDE = 39°40'36.04" (39.676678)	LATITUDE = 39°40'27.70" (39.674361)
LONGITUDE = 108°07'11.06" (108.119739)	LONGITUDE = 108°07'10.55" (108.119597)
LATITUDE = 39°40'36.13" (39.676703)	LATITUDE = 39°40'27.79" (39.674386)
LONGITUDE = 108°07'08.77" (108.119103)	LONGITUDE = 108°07'08.26" (108.118961)