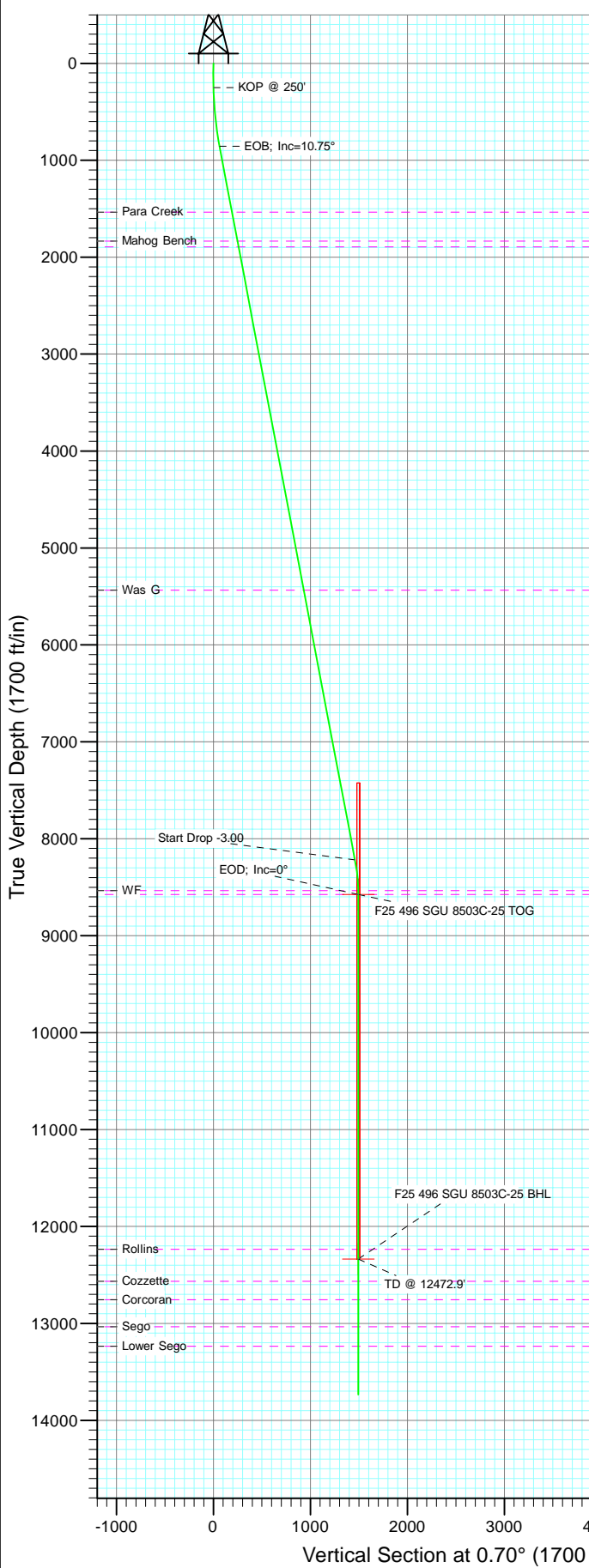


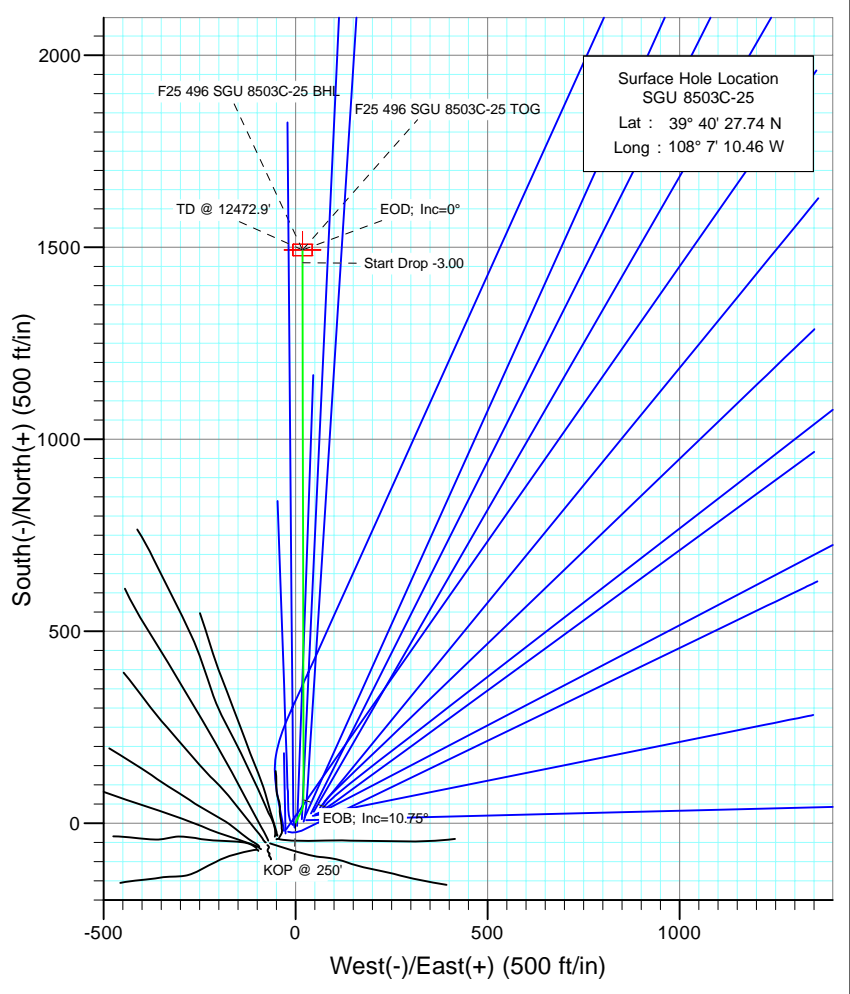


Project: Story Gulch
 Site: F25 496
 Well: SGU 8503C-25
 Wellbore: DD
 Design: Plan #1



SECTION DETAILS

Sec	MD	Inc	Azi	TVD	+N/-S	+E/-W	Dleg	TFace	V Sect	Target
1	0.0	0.00	0.00	0.0	0.0	0.0	0.00	0.00	0.0	
2	250.0	0.00	0.00	250.0	0.0	0.0	0.00	0.00	0.0	
3	483.3	7.00	25.00	482.8	12.9	6.0	3.00	25.00	13.0	
4	683.3	7.00	25.00	681.3	35.0	16.3	0.00	0.00	35.2	
5	860.4	10.75	359.90	856.2	61.3	20.8	3.00	-58.78	61.6	
6	8354.4	10.75	359.90	8218.6	1459.6	18.3	0.00	0.00	1459.7	
7	8712.9	0.00	0.00	8575.0	1493.1	18.3	3.00	180.00	1493.3	F25 496 SGU 8503C-25 TOG
8	12472.9	0.00	0.00	12335.0	1493.1	18.3	0.00	0.00	1493.3	F25 496 SGU 8503C-25 BHL
9	13872.9	0.00	0.00	13735.0	1493.1	18.3	0.00	0.00	1493.3	



Bottom Hole Location
 SGU 8503C-25
 Lat : 39 40 42.50 N
 Long. : 108 7 10.23 W

T M

Azimuths to True North
 Magnetic North: 10.55°

Magnetic Field
 Strength: 52453.5snT
 Dip Angle: 65.90°
 Date: 5/6/2010
 Model: IGRF200510

FORMATION TOP DETAILS

TVDPath	MDPath	Formation
1535.0	1551.3	Para Creek
1835.0	1856.7	Mahog Bench
1895.0	1917.7	Base B
5435.0	5521.0	Was G
8535.0	8672.9	WF
8575.0	8712.9	TOG
12235.0	12372.9	Rollins
12565.0	12702.9	Cozzette
12755.0	12892.9	Corcoran
13035.0	13172.9	Sego
13235.0	13372.9	Lower Sego

DESIGN DETAILS: Plan #1
 105XXX; BH
 KBE @ 8320.0ft (Original Well Elev)

Target	Azimuth	Origin	N/S	E/W	From TVD
F25 496 SGU 8503C-25 BHL	0.70	Slot	0.0	0.0	0.0

Cathedral Energy Services

Planning Report

Database: EDM 5000.1 US Multi Users DB	Local Co-ordinate Reference: Well SGU 8503C-25
Company: EnCana Oil & Gas (USA) Inc	TVD Reference: KBE @ 8320.0ft (Original Well Elev)
Project: Story Gulch	MD Reference: KBE @ 8320.0ft (Original Well Elev)
Site: F25 496	North Reference: True
Well: SGU 8503C-25	Survey Calculation Method: Minimum Curvature
Wellbore: DD	
Design: Plan #1	

Project Story Gulch		
Map System: US State Plane 1983	System Datum: Mean Sea Level	
Geo Datum: North American Datum 1983		
Map Zone: Colorado Central Zone		

Site F25 496					
Site Position:		Northing:	1,681,091.06 ft	Latitude:	39° 40' 27.10 N
From:	Lat/Long	Easting:	2,262,632.54 ft	Longitude:	108° 7' 11.76 W
Position Uncertainty:	0.0 ft	Slot Radius:	13.200 in	Grid Convergence:	-1.65 °

Well SGU 8503C-25					
Well Position	+N/-S	0.0 ft	Northing:	1,681,152.98 ft	Latitude: 39° 40' 27.74 N
	+E/-W	0.0 ft	Easting:	2,262,735.38 ft	Longitude: 108° 7' 10.46 W
Position Uncertainty		0.0 ft	Wellhead Elevation:	ft	Ground Level: 8,298.0 ft

Wellbore DD					
Magnetics	Model Name	Sample Date	Declination	Dip Angle	Field Strength
	IGRF200510	5/6/2010	(°)	(°)	(nT)
			10.55	65.90	52,454

Design Plan #1					
Audit Notes:					
Version:	Phase:	PLAN	Tie On Depth:	0.0	
Vertical Section:	Depth From (TVD)	+N/-S	+E/-W	Direction	
	(ft)	(ft)	(ft)	(°)	
	0.0	0.0	0.0	0.70	

Plan Sections										
Measured Depth (ft)	Inclination (°)	Azimuth (°)	Vertical Depth (ft)	+N/-S (ft)	+E/-W (ft)	Dogleg Rate (°/100ft)	Build Rate (°/100ft)	Turn Rate (°/100ft)	TFO (°)	Target
0.0	0.00	0.00	0.0	0.0	0.0	0.00	0.00	0.00	0.00	
250.0	0.00	0.00	250.0	0.0	0.0	0.00	0.00	0.00	0.00	
483.3	7.00	25.00	482.8	12.9	6.0	3.00	3.00	0.00	25.00	
683.3	7.00	25.00	681.3	35.0	16.3	0.00	0.00	0.00	0.00	
860.4	10.75	359.90	856.2	61.3	20.8	3.00	2.12	-14.18	-58.78	
8,354.4	10.75	359.90	8,218.6	1,459.6	18.3	0.00	0.00	0.00	0.00	
8,712.9	0.00	0.00	8,575.0	1,493.1	18.3	3.00	-3.00	0.00	180.00	F25 496 SGU 8503C-
12,472.9	0.00	0.00	12,335.0	1,493.1	18.3	0.00	0.00	0.00	0.00	F25 496 SGU 8503C-
13,872.9	0.00	0.00	13,735.0	1,493.1	18.3	0.00	0.00	0.00	0.00	

Cathedral Energy Services

Planning Report

Database:	EDM 5000.1 US Multi Users DB	Local Co-ordinate Reference:	Well SGU 8503C-25
Company:	EnCana Oil & Gas (USA) Inc	TVD Reference:	KBE @ 8320.0ft (Original Well Elev)
Project:	Story Gulch	MD Reference:	KBE @ 8320.0ft (Original Well Elev)
Site:	F25 496	North Reference:	True
Well:	SGU 8503C-25	Survey Calculation Method:	Minimum Curvature
Wellbore:	DD		
Design:	Plan #1		

Planned Survey									
Measured Depth (ft)	Inclination (°)	Azimuth (°)	Vertical Depth (ft)	+N/-S (ft)	+E/-W (ft)	Vertical Section (ft)	Dogleg Rate (°/100ft)	Build Rate (°/100ft)	Comments / Formations
0.0	0.00	0.00	0.0	0.0	0.0	0.0	0.00	0.00	
100.0	0.00	0.00	100.0	0.0	0.0	0.0	0.00	0.00	
200.0	0.00	0.00	200.0	0.0	0.0	0.0	0.00	0.00	
250.0	0.00	0.00	250.0	0.0	0.0	0.0	0.00	0.00	KOP @ 250'
300.0	1.50	25.00	300.0	0.6	0.3	0.6	3.00	3.00	
400.0	4.50	25.00	399.8	5.3	2.5	5.4	3.00	3.00	
483.3	7.00	25.00	482.8	12.9	6.0	13.0	3.00	3.00	
500.0	7.00	25.00	499.3	14.7	6.9	14.8	0.00	0.00	
600.0	7.00	25.00	598.6	25.8	12.0	25.9	0.00	0.00	
683.3	7.00	25.00	681.3	35.0	16.3	35.2	0.00	0.00	
700.0	7.27	21.62	697.8	36.9	17.1	37.1	3.00	1.63	
800.0	9.31	6.16	796.8	50.8	20.3	51.1	3.00	2.03	
860.4	10.75	359.90	856.2	61.3	20.8	61.6	3.00	2.40	EOB; Inc=10.75°
900.0	10.75	359.90	895.1	68.7	20.8	68.9	0.00	0.00	
1,000.0	10.75	359.90	993.4	87.4	20.8	87.6	0.00	0.00	
1,100.0	10.75	359.90	1,091.6	106.0	20.8	106.3	0.00	0.00	
1,200.0	10.75	359.90	1,189.9	124.7	20.7	124.9	0.00	0.00	
1,300.0	10.75	359.90	1,288.1	143.3	20.7	143.6	0.00	0.00	
1,400.0	10.75	359.90	1,386.4	162.0	20.7	162.2	0.00	0.00	
1,500.0	10.75	359.90	1,484.6	180.7	20.6	180.9	0.00	0.00	
1,551.3	10.75	359.90	1,535.0	190.2	20.6	190.5	0.00	0.00	Para Creek
1,600.0	10.75	359.90	1,582.9	199.3	20.6	199.5	0.00	0.00	
1,700.0	10.75	359.90	1,681.1	218.0	20.6	218.2	0.00	0.00	
1,800.0	10.75	359.90	1,779.3	236.6	20.5	236.9	0.00	0.00	
1,856.7	10.75	359.90	1,835.0	247.2	20.5	247.4	0.00	0.00	Mahog Bench
1,900.0	10.75	359.90	1,877.6	255.3	20.5	255.5	0.00	0.00	
1,917.7	10.75	359.90	1,895.0	258.6	20.5	258.8	0.00	0.00	Base B
2,000.0	10.75	359.90	1,975.8	273.9	20.5	274.2	0.00	0.00	
2,100.0	10.75	359.90	2,074.1	292.6	20.4	292.8	0.00	0.00	
2,200.0	10.75	359.90	2,172.3	311.3	20.4	311.5	0.00	0.00	
2,300.0	10.75	359.90	2,270.6	329.9	20.4	330.1	0.00	0.00	
2,400.0	10.75	359.90	2,368.8	348.6	20.3	348.8	0.00	0.00	
2,500.0	10.75	359.90	2,467.0	367.2	20.3	367.5	0.00	0.00	
2,600.0	10.75	359.90	2,565.3	385.9	20.3	386.1	0.00	0.00	
2,700.0	10.75	359.90	2,663.5	404.6	20.2	404.8	0.00	0.00	
2,800.0	10.75	359.90	2,761.8	423.2	20.2	423.4	0.00	0.00	
2,900.0	10.75	359.90	2,860.0	441.9	20.2	442.1	0.00	0.00	
3,000.0	10.75	359.90	2,958.3	460.5	20.1	460.7	0.00	0.00	
3,100.0	10.75	359.90	3,056.5	479.2	20.1	479.4	0.00	0.00	
3,200.0	10.75	359.90	3,154.8	497.9	20.1	498.1	0.00	0.00	
3,300.0	10.75	359.90	3,253.0	516.5	20.0	516.7	0.00	0.00	
3,400.0	10.75	359.90	3,351.2	535.2	20.0	535.4	0.00	0.00	
3,500.0	10.75	359.90	3,449.5	553.8	20.0	554.0	0.00	0.00	
3,600.0	10.75	359.90	3,547.7	572.5	19.9	572.7	0.00	0.00	
3,700.0	10.75	359.90	3,646.0	591.1	19.9	591.3	0.00	0.00	
3,800.0	10.75	359.90	3,744.2	609.8	19.9	610.0	0.00	0.00	
3,900.0	10.75	359.90	3,842.5	628.5	19.8	628.7	0.00	0.00	
4,000.0	10.75	359.90	3,940.7	647.1	19.8	647.3	0.00	0.00	
4,100.0	10.75	359.90	4,038.9	665.8	19.8	666.0	0.00	0.00	
4,200.0	10.75	359.90	4,137.2	684.4	19.7	684.6	0.00	0.00	
4,300.0	10.75	359.90	4,235.4	703.1	19.7	703.3	0.00	0.00	
4,400.0	10.75	359.90	4,333.7	721.8	19.7	721.9	0.00	0.00	

Cathedral Energy Services

Planning Report

Database:	EDM 5000.1 US Multi Users DB	Local Co-ordinate Reference:	Well SGU 8503C-25
Company:	EnCana Oil & Gas (USA) Inc	TVD Reference:	KBE @ 8320.0ft (Original Well Elev)
Project:	Story Gulch	MD Reference:	KBE @ 8320.0ft (Original Well Elev)
Site:	F25 496	North Reference:	True
Well:	SGU 8503C-25	Survey Calculation Method:	Minimum Curvature
Wellbore:	DD		
Design:	Plan #1		

Planned Survey									
Measured Depth (ft)	Inclination (°)	Azimuth (°)	Vertical Depth (ft)	+N/-S (ft)	+E/-W (ft)	Vertical Section (ft)	Dogleg Rate (°/100ft)	Build Rate (°/100ft)	Comments / Formations
4,500.0	10.75	359.90	4,431.9	740.4	19.6	740.6	0.00	0.00	
4,600.0	10.75	359.90	4,530.2	759.1	19.6	759.3	0.00	0.00	
4,700.0	10.75	359.90	4,628.4	777.7	19.6	777.9	0.00	0.00	
4,800.0	10.75	359.90	4,726.7	796.4	19.5	796.6	0.00	0.00	
4,900.0	10.75	359.90	4,824.9	815.0	19.5	815.2	0.00	0.00	
5,000.0	10.75	359.90	4,923.1	833.7	19.5	833.9	0.00	0.00	
5,100.0	10.75	359.90	5,021.4	852.4	19.4	852.5	0.00	0.00	
5,200.0	10.75	359.90	5,119.6	871.0	19.4	871.2	0.00	0.00	
5,300.0	10.75	359.90	5,217.9	889.7	19.4	889.9	0.00	0.00	
5,400.0	10.75	359.90	5,316.1	908.3	19.3	908.5	0.00	0.00	
5,500.0	10.75	359.90	5,414.4	927.0	19.3	927.2	0.00	0.00	
5,521.0	10.75	359.90	5,435.0	930.9	19.3	931.1	0.00	0.00	Was G
5,600.0	10.75	359.90	5,512.6	945.7	19.3	945.8	0.00	0.00	
5,700.0	10.75	359.90	5,610.8	964.3	19.2	964.5	0.00	0.00	
5,800.0	10.75	359.90	5,709.1	983.0	19.2	983.1	0.00	0.00	
5,900.0	10.75	359.90	5,807.3	1,001.6	19.2	1,001.8	0.00	0.00	
6,000.0	10.75	359.90	5,905.6	1,020.3	19.1	1,020.5	0.00	0.00	
6,100.0	10.75	359.90	6,003.8	1,039.0	19.1	1,039.1	0.00	0.00	
6,200.0	10.75	359.90	6,102.1	1,057.6	19.1	1,057.8	0.00	0.00	
6,300.0	10.75	359.90	6,200.3	1,076.3	19.0	1,076.4	0.00	0.00	
6,400.0	10.75	359.90	6,298.6	1,094.9	19.0	1,095.1	0.00	0.00	
6,500.0	10.75	359.90	6,396.8	1,113.6	19.0	1,113.7	0.00	0.00	
6,600.0	10.75	359.90	6,495.0	1,132.2	18.9	1,132.4	0.00	0.00	
6,700.0	10.75	359.90	6,593.3	1,150.9	18.9	1,151.1	0.00	0.00	
6,800.0	10.75	359.90	6,691.5	1,169.6	18.9	1,169.7	0.00	0.00	
6,900.0	10.75	359.90	6,789.8	1,188.2	18.8	1,188.4	0.00	0.00	
7,000.0	10.75	359.90	6,888.0	1,206.9	18.8	1,207.0	0.00	0.00	
7,100.0	10.75	359.90	6,986.3	1,225.5	18.8	1,225.7	0.00	0.00	
7,200.0	10.75	359.90	7,084.5	1,244.2	18.7	1,244.3	0.00	0.00	
7,300.0	10.75	359.90	7,182.7	1,262.9	18.7	1,263.0	0.00	0.00	
7,400.0	10.75	359.90	7,281.0	1,281.5	18.7	1,281.7	0.00	0.00	
7,500.0	10.75	359.90	7,379.2	1,300.2	18.6	1,300.3	0.00	0.00	
7,600.0	10.75	359.90	7,477.5	1,318.8	18.6	1,319.0	0.00	0.00	
7,700.0	10.75	359.90	7,575.7	1,337.5	18.6	1,337.6	0.00	0.00	
7,800.0	10.75	359.90	7,674.0	1,356.2	18.5	1,356.3	0.00	0.00	
7,900.0	10.75	359.90	7,772.2	1,374.8	18.5	1,374.9	0.00	0.00	
8,000.0	10.75	359.90	7,870.5	1,393.5	18.5	1,393.6	0.00	0.00	
8,100.0	10.75	359.90	7,968.7	1,412.1	18.4	1,412.2	0.00	0.00	
8,200.0	10.75	359.90	8,066.9	1,430.8	18.4	1,430.9	0.00	0.00	
8,300.0	10.75	359.90	8,165.2	1,449.4	18.4	1,449.6	0.00	0.00	
8,354.4	10.75	359.90	8,218.6	1,459.6	18.3	1,459.7	0.00	0.00	Start Drop -3.00
8,400.0	9.39	359.90	8,263.5	1,467.6	18.3	1,467.7	3.00	-3.00	
8,500.0	6.39	359.90	8,362.6	1,481.3	18.3	1,481.4	3.00	-3.00	
8,600.0	3.39	359.90	8,462.2	1,489.8	18.3	1,489.9	3.00	-3.00	
8,672.9	1.20	359.90	8,535.0	1,492.7	18.3	1,492.8	3.00	-3.00	WF
8,700.0	0.39	359.90	8,562.1	1,493.1	18.3	1,493.2	3.00	-3.00	
8,712.9	0.00	0.00	8,575.0	1,493.1	18.3	1,493.3	3.00	-3.00	EOD; Inc=0° - TOG - F25 496 SGU 8503C-25 1
8,800.0	0.00	0.00	8,662.1	1,493.1	18.3	1,493.3	0.00	0.00	
8,900.0	0.00	0.00	8,762.1	1,493.1	18.3	1,493.3	0.00	0.00	
9,000.0	0.00	0.00	8,862.1	1,493.1	18.3	1,493.3	0.00	0.00	
9,100.0	0.00	0.00	8,962.1	1,493.1	18.3	1,493.3	0.00	0.00	
9,200.0	0.00	0.00	9,062.1	1,493.1	18.3	1,493.3	0.00	0.00	

Cathedral Energy Services

Planning Report

Database:	EDM 5000.1 US Multi Users DB	Local Co-ordinate Reference:	Well SGU 8503C-25
Company:	EnCana Oil & Gas (USA) Inc	TVD Reference:	KBE @ 8320.0ft (Original Well Elev)
Project:	Story Gulch	MD Reference:	KBE @ 8320.0ft (Original Well Elev)
Site:	F25 496	North Reference:	True
Well:	SGU 8503C-25	Survey Calculation Method:	Minimum Curvature
Wellbore:	DD		
Design:	Plan #1		

Planned Survey									
Measured Depth (ft)	Inclination (°)	Azimuth (°)	Vertical Depth (ft)	+N/-S (ft)	+E/-W (ft)	Vertical Section (ft)	Dogleg Rate (°/100ft)	Build Rate (°/100ft)	Comments / Formations
9,300.0	0.00	0.00	9,162.1	1,493.1	18.3	1,493.3	0.00	0.00	
9,400.0	0.00	0.00	9,262.1	1,493.1	18.3	1,493.3	0.00	0.00	
9,500.0	0.00	0.00	9,362.1	1,493.1	18.3	1,493.3	0.00	0.00	
9,600.0	0.00	0.00	9,462.1	1,493.1	18.3	1,493.3	0.00	0.00	
9,700.0	0.00	0.00	9,562.1	1,493.1	18.3	1,493.3	0.00	0.00	
9,800.0	0.00	0.00	9,662.1	1,493.1	18.3	1,493.3	0.00	0.00	
9,900.0	0.00	0.00	9,762.1	1,493.1	18.3	1,493.3	0.00	0.00	
10,000.0	0.00	0.00	9,862.1	1,493.1	18.3	1,493.3	0.00	0.00	
10,100.0	0.00	0.00	9,962.1	1,493.1	18.3	1,493.3	0.00	0.00	
10,200.0	0.00	0.00	10,062.1	1,493.1	18.3	1,493.3	0.00	0.00	
10,300.0	0.00	0.00	10,162.1	1,493.1	18.3	1,493.3	0.00	0.00	
10,400.0	0.00	0.00	10,262.1	1,493.1	18.3	1,493.3	0.00	0.00	
10,500.0	0.00	0.00	10,362.1	1,493.1	18.3	1,493.3	0.00	0.00	
10,600.0	0.00	0.00	10,462.1	1,493.1	18.3	1,493.3	0.00	0.00	
10,700.0	0.00	0.00	10,562.1	1,493.1	18.3	1,493.3	0.00	0.00	
10,800.0	0.00	0.00	10,662.1	1,493.1	18.3	1,493.3	0.00	0.00	
10,900.0	0.00	0.00	10,762.1	1,493.1	18.3	1,493.3	0.00	0.00	
11,000.0	0.00	0.00	10,862.1	1,493.1	18.3	1,493.3	0.00	0.00	
11,100.0	0.00	0.00	10,962.1	1,493.1	18.3	1,493.3	0.00	0.00	
11,200.0	0.00	0.00	11,062.1	1,493.1	18.3	1,493.3	0.00	0.00	
11,300.0	0.00	0.00	11,162.1	1,493.1	18.3	1,493.3	0.00	0.00	
11,400.0	0.00	0.00	11,262.1	1,493.1	18.3	1,493.3	0.00	0.00	
11,500.0	0.00	0.00	11,362.1	1,493.1	18.3	1,493.3	0.00	0.00	
11,600.0	0.00	0.00	11,462.1	1,493.1	18.3	1,493.3	0.00	0.00	
11,700.0	0.00	0.00	11,562.1	1,493.1	18.3	1,493.3	0.00	0.00	
11,800.0	0.00	0.00	11,662.1	1,493.1	18.3	1,493.3	0.00	0.00	
11,900.0	0.00	0.00	11,762.1	1,493.1	18.3	1,493.3	0.00	0.00	
12,000.0	0.00	0.00	11,862.1	1,493.1	18.3	1,493.3	0.00	0.00	
12,100.0	0.00	0.00	11,962.1	1,493.1	18.3	1,493.3	0.00	0.00	
12,200.0	0.00	0.00	12,062.1	1,493.1	18.3	1,493.3	0.00	0.00	
12,300.0	0.00	0.00	12,162.1	1,493.1	18.3	1,493.3	0.00	0.00	
12,372.9	0.00	0.00	12,235.0	1,493.1	18.3	1,493.3	0.00	0.00	Rollins
12,400.0	0.00	0.00	12,262.1	1,493.1	18.3	1,493.3	0.00	0.00	
12,472.9	0.00	0.00	12,335.0	1,493.1	18.3	1,493.3	0.00	0.00	TD @ 12472.9' - F25 496 SGU 8503C-25 BHL
12,500.0	0.00	0.00	12,362.1	1,493.1	18.3	1,493.3	0.00	0.00	
12,600.0	0.00	0.00	12,462.1	1,493.1	18.3	1,493.3	0.00	0.00	
12,700.0	0.00	0.00	12,562.1	1,493.1	18.3	1,493.3	0.00	0.00	
12,702.9	0.00	0.00	12,565.0	1,493.1	18.3	1,493.3	0.00	0.00	Cozzette
12,800.0	0.00	0.00	12,662.1	1,493.1	18.3	1,493.3	0.00	0.00	
12,892.9	0.00	0.00	12,755.0	1,493.1	18.3	1,493.3	0.00	0.00	Corcoran
12,900.0	0.00	0.00	12,762.1	1,493.1	18.3	1,493.3	0.00	0.00	
13,000.0	0.00	0.00	12,862.1	1,493.1	18.3	1,493.3	0.00	0.00	
13,100.0	0.00	0.00	12,962.1	1,493.1	18.3	1,493.3	0.00	0.00	
13,172.9	0.00	0.00	13,035.0	1,493.1	18.3	1,493.3	0.00	0.00	Sego
13,200.0	0.00	0.00	13,062.1	1,493.1	18.3	1,493.3	0.00	0.00	
13,300.0	0.00	0.00	13,162.1	1,493.1	18.3	1,493.3	0.00	0.00	
13,372.9	0.00	0.00	13,235.0	1,493.1	18.3	1,493.3	0.00	0.00	Lower Segoe
13,400.0	0.00	0.00	13,262.1	1,493.1	18.3	1,493.3	0.00	0.00	
13,500.0	0.00	0.00	13,362.1	1,493.1	18.3	1,493.3	0.00	0.00	
13,600.0	0.00	0.00	13,462.1	1,493.1	18.3	1,493.3	0.00	0.00	
13,700.0	0.00	0.00	13,562.1	1,493.1	18.3	1,493.3	0.00	0.00	
13,800.0	0.00	0.00	13,662.1	1,493.1	18.3	1,493.3	0.00	0.00	

Cathedral Energy Services

Planning Report

Database:	EDM 5000.1 US Multi Users DB	Local Co-ordinate Reference:	Well SGU 8503C-25
Company:	EnCana Oil & Gas (USA) Inc	TVD Reference:	KBE @ 8320.0ft (Original Well Elev)
Project:	Story Gulch	MD Reference:	KBE @ 8320.0ft (Original Well Elev)
Site:	F25 496	North Reference:	True
Well:	SGU 8503C-25	Survey Calculation Method:	Minimum Curvature
Wellbore:	DD		
Design:	Plan #1		

Planned Survey									
Measured Depth (ft)	Inclination (°)	Azimuth (°)	Vertical Depth (ft)	+N/-S (ft)	+E/-W (ft)	Vertical Section (ft)	Dogleg Rate (°/100ft)	Build Rate (°/100ft)	Comments / Formations
13,872.9	0.00	0.00	13,735.0	1,493.1	18.3	1,493.3	0.00	0.00	

Targets									
Target Name - hit/miss target - Shape	Dip Angle (°)	Dip Dir. (°)	TVD (ft)	+N/-S (ft)	+E/-W (ft)	Northing (ft)	Easting (ft)	Latitude	Longitude
F25 496 SGU 8503C-25 - plan hits target center - Rectangle (sides W30.0 H50.0 D0.0)	0.00	0.00	12,335.0	1,493.1	18.3	1,682,644.97	2,262,796.71	39° 40' 42.50 N	108° 7' 10.23 W
F25 496 SGU 8503C-25 - plan hits target center - Point	0.00	0.00	8,575.0	1,493.1	18.3	1,682,644.97	2,262,796.71	39° 40' 42.50 N	108° 7' 10.23 W

Formations					
Measured Depth (ft)	Vertical Depth (ft)	Name	Lithology	Dip (°)	Dip Direction (°)
1,551.3	1,535.0	Para Creek		0.00	
1,856.7	1,835.0	Mahog Bench		0.00	
1,917.7	1,895.0	Base B		0.00	
5,521.0	5,435.0	Was G		0.00	
8,672.9	8,535.0	WF		0.00	
8,712.9	8,575.0	TOG		0.00	
12,372.9	12,235.0	Rollins		0.00	
12,702.9	12,565.0	Cozzette		0.00	
12,892.9	12,755.0	Corcoran		0.00	
13,172.9	13,035.0	Sego		0.00	
13,372.9	13,235.0	Lower Sego		0.00	

Plan Annotations				
Measured Depth (ft)	Vertical Depth (ft)	Local Coordinates		Comment
		+N/-S (ft)	+E/-W (ft)	
250.0	250.0	0.0	0.0	KOP @ 250'
860.4	856.2	61.3	20.8	EOB; Inc=10.75°
8,354.4	8,218.6	1,459.6	18.3	Start Drop -3.00
8,712.9	8,575.0	1,493.1	18.3	EOD; Inc=0°
12,472.9	12,335.0	1,493.1	18.3	TD @ 12472.9'
13,872.9	13,735.0	1,493.1	18.3	Permit TD @ 13872.9'