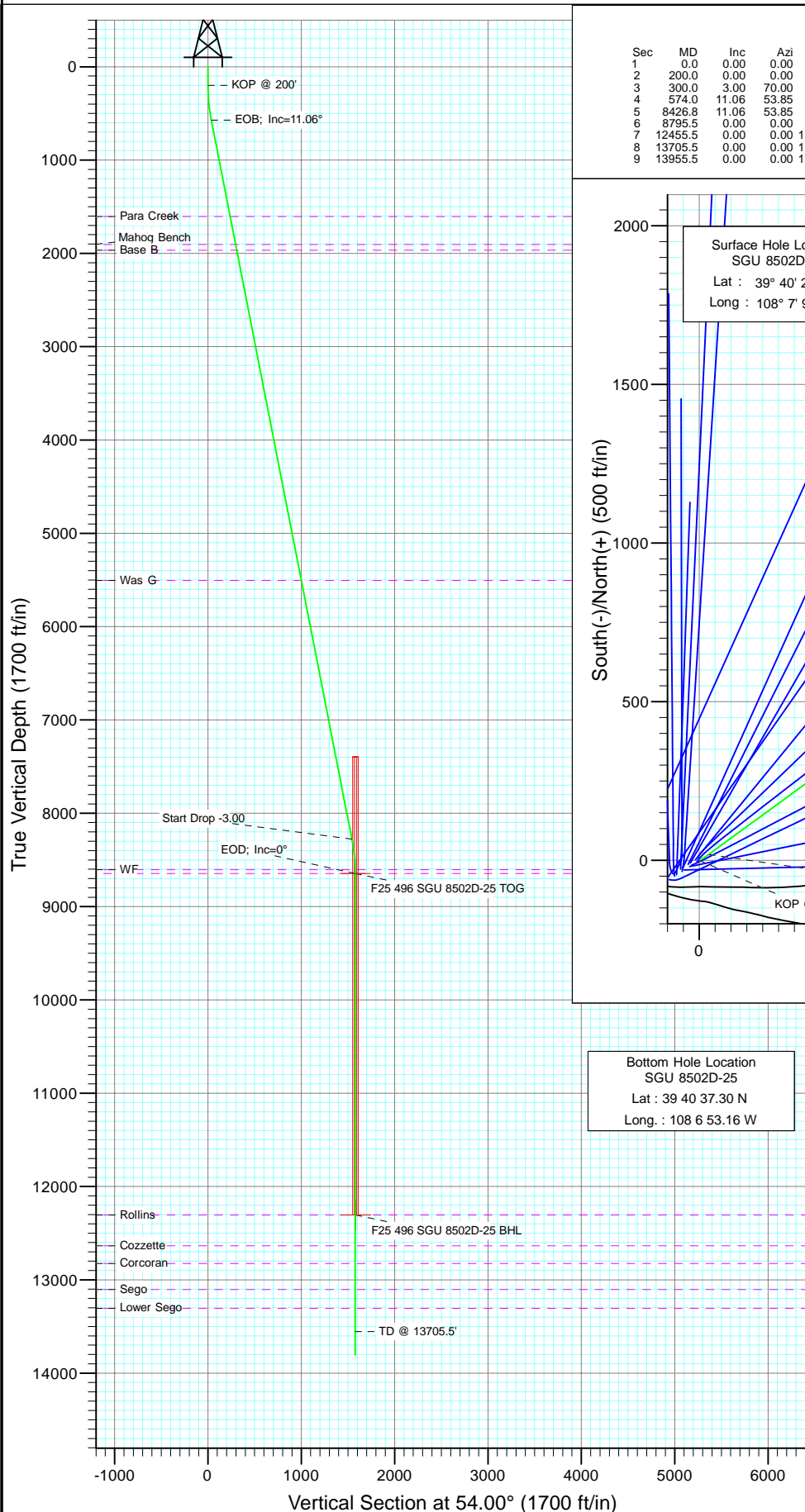
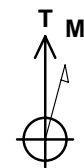
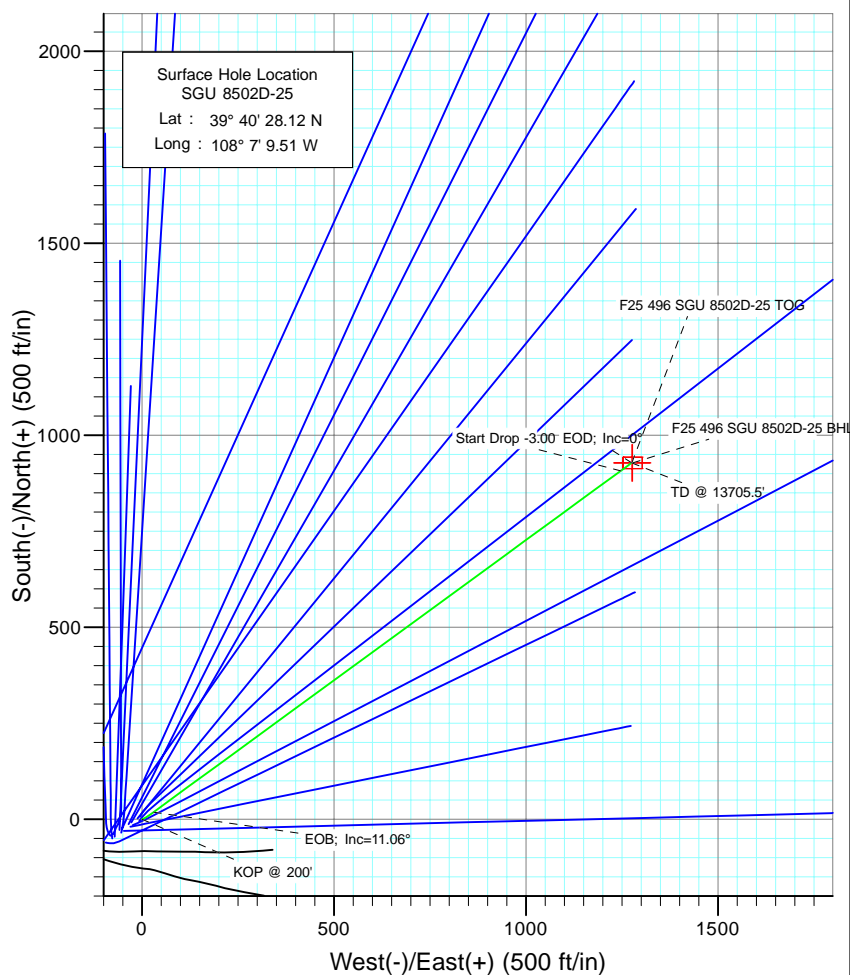




Project: Story Gulch  
Site: F25 496  
Well: SGU 8502D-25  
Wellbore: DD  
Design: Plan #1



SECTION DETAILS										
Sec	MD	Inc	Azi	TVD	+N/-S	+E/-W	Dleg	TFace	Vsect	Target
1	0.0	0.00	0.00	0.0	0.0	0.0	0.00	0.00	0.0	
2	200.0	0.00	0.00	200.0	0.0	0.0	0.00	0.00	0.0	
3	300.0	3.00	70.00	300.0	0.9	2.5	3.00	70.00	2.5	
4	574.0	11.06	53.85	571.7	18.9	30.5	3.00	-21.91	35.8	
5	8426.8	11.06	53.85	8278.6	907.5	1247.0	0.00	0.00	1542.3	F25 496 SGU 8502D-25 TOG
6	8795.5	0.00	0.00	8645.0	928.4	1275.6	3.00	180.00	1577.7	F25 496 SGU 8502D-25 BHL
7	12455.5	0.00	0.00	12305.0	928.4	1275.6	0.00	0.00	1577.7	
8	13705.5	0.00	0.00	13555.0	928.4	1275.6	0.00	0.00	1577.7	
9	13955.5	0.00	0.00	13805.0	928.4	1275.6	0.00	0.00	1577.7	



Azimuths to True North  
Magnetic North: 10.55°

Magnetic Field  
Strength: 52453.6nT  
Dip Angle: 65.90°  
Date: 5/6/2010  
Model: IGRF200510

#### FORMATION TOP DETAILS

TVDPath	MDPath	Formation
1605.0	1626.9	Para Creek
1905.0	1932.5	Mahog Bench
1965.0	1993.7	Base B
5505.0	5600.7	Was G
8605.0	8755.5	WF
8645.0	8795.5	TOG
12305.0	12455.5	Rollins
12635.0	12785.5	Cozzette
12825.0	12975.5	Corcoran
13105.0	13255.5	Sego
13305.0	13455.5	Lower Sego

DESIGN DETAILS: Plan #1  
105XXX; BH  
KBE @ 8320.0ft (Original Well Elev)

Target	Azimuth	Origin	N/S	E/W	From TVD
F25 496 SGU 8502D-25 BHL	54.00	Slot	0.0	0.0	0.0

# Cathedral Energy Services

## Planning Report

<b>Database:</b>	EDM 5000.1 US Multi Users DB	<b>Local Co-ordinate Reference:</b>	Well SGU 8502D-25
<b>Company:</b>	EnCana Oil & Gas (USA) Inc	<b>TVD Reference:</b>	KBE @ 8320.0ft (Original Well Elev)
<b>Project:</b>	Story Gulch	<b>MD Reference:</b>	KBE @ 8320.0ft (Original Well Elev)
<b>Site:</b>	F25 496	<b>North Reference:</b>	True
<b>Well:</b>	SGU 8502D-25	<b>Survey Calculation Method:</b>	Minimum Curvature
<b>Wellbore:</b>	DD		
<b>Design:</b>	Plan #1		

<b>Project</b>	Story Gulch		
<b>Map System:</b>	US State Plane 1983	<b>System Datum:</b>	Mean Sea Level
<b>Geo Datum:</b>	North American Datum 1983		
<b>Map Zone:</b>	Colorado Central Zone		

<b>Site</b>	F25 496			
<b>Site Position:</b>		<b>Northing:</b>	1,681,091.06 ft	<b>Latitude:</b> 39° 40' 27.10 N
<b>From:</b>	Lat/Long	<b>Easting:</b>	2,262,632.54 ft	<b>Longitude:</b> 108° 7' 11.76 W
<b>Position Uncertainty:</b>	0.0 ft	<b>Slot Radius:</b>	13.200 in	<b>Grid Convergence:</b> -1.65 °

<b>Well</b>	SGU 8502D-25			
<b>Well Position</b>	<b>+N/-S</b>	0.0 ft	<b>Northing:</b>	1,681,189.40 ft
	<b>+E/-W</b>	0.0 ft	<b>Easting:</b>	2,262,811.42 ft
<b>Position Uncertainty</b>		0.0 ft	<b>Wellhead Elevation:</b>	ft
			<b>Ground Level:</b>	8,298.0 ft

<b>Wellbore</b>	DD				
<b>Magnetics</b>	<b>Model Name</b>	<b>Sample Date</b>	<b>Declination (°)</b>	<b>Dip Angle (°)</b>	<b>Field Strength (nT)</b>
	IGRF200510	5/6/2010	10.55	65.90	52,454

<b>Design</b>	Plan #1			
<b>Audit Notes:</b>				
<b>Version:</b>	<b>Phase:</b>	PLAN	<b>Tie On Depth:</b>	0.0
<b>Vertical Section:</b>	<b>Depth From (TVD) (ft)</b>	<b>+N/-S (ft)</b>	<b>+E/-W (ft)</b>	<b>Direction (°)</b>
	0.0	0.0	0.0	54.00

<b>Plan Sections</b>										
Measured Depth (ft)	Inclination (°)	Azimuth (°)	Vertical Depth (ft)	+N/-S (ft)	+E/-W (ft)	Dogleg Rate (°/100ft)	Build Rate (°/100ft)	Turn Rate (°/100ft)	TFO (°)	Target
0.0	0.00	0.00	0.0	0.0	0.0	0.00	0.00	0.00	0.00	
200.0	0.00	0.00	200.0	0.0	0.0	0.00	0.00	0.00	0.00	
300.0	3.00	70.00	300.0	0.9	2.5	3.00	3.00	0.00	70.00	
574.0	11.06	53.85	571.7	18.9	30.5	3.00	2.94	-5.89	-21.91	
8,426.8	11.06	53.85	8,278.6	907.5	1,247.0	0.00	0.00	0.00	0.00	
8,795.5	0.00	0.00	8,645.0	928.4	1,275.6	3.00	-3.00	0.00	180.00	F25 496 SGU 8502D-
12,455.5	0.00	0.00	12,305.0	928.4	1,275.6	0.00	0.00	0.00	0.00	F25 496 SGU 8502D-
13,705.5	0.00	0.00	13,555.0	928.4	1,275.6	0.00	0.00	0.00	0.00	
13,955.5	0.00	0.00	13,805.0	928.4	1,275.6	0.00	0.00	0.00	0.00	

# Cathedral Energy Services

## Planning Report

<b>Database:</b>	EDM 5000.1 US Multi Users DB	<b>Local Co-ordinate Reference:</b>	Well SGU 8502D-25
<b>Company:</b>	EnCana Oil & Gas (USA) Inc	<b>TVD Reference:</b>	KBE @ 8320.0ft (Original Well Elev)
<b>Project:</b>	Story Gulch	<b>MD Reference:</b>	KBE @ 8320.0ft (Original Well Elev)
<b>Site:</b>	F25 496	<b>North Reference:</b>	True
<b>Well:</b>	SGU 8502D-25	<b>Survey Calculation Method:</b>	Minimum Curvature
<b>Wellbore:</b>	DD		
<b>Design:</b>	Plan #1		

### Planned Survey

Measured Depth (ft)	Inclination (°)	Azimuth (°)	Vertical Depth (ft)	+N/-S (ft)	+E/-W (ft)	Vertical Section (ft)	Dogleg Rate (°/100ft)	Build Rate (°/100ft)	Comments / Formations
0.0	0.00	0.00	0.0	0.0	0.0	0.0	0.00	0.00	
100.0	0.00	0.00	100.0	0.0	0.0	0.0	0.00	0.00	
200.0	0.00	0.00	200.0	0.0	0.0	0.0	0.00	0.00	KOP @ 200'
300.0	3.00	70.00	300.0	0.9	2.5	2.5	3.00	3.00	
400.0	5.89	59.03	399.6	4.4	9.3	10.1	3.00	2.89	
500.0	8.85	55.32	498.8	11.5	20.1	23.0	3.00	2.96	
574.0	11.06	53.85	571.7	18.9	30.5	35.7	3.00	2.98	EOB; Inc=11.06°
600.0	11.06	53.85	597.2	21.8	34.5	40.7	0.00	0.00	
700.0	11.06	53.85	695.3	33.1	50.0	59.9	0.00	0.00	
800.0	11.06	53.85	793.5	44.5	65.5	79.1	0.00	0.00	
900.0	11.06	53.85	891.6	55.8	81.0	98.3	0.00	0.00	
1,000.0	11.06	53.85	989.8	67.1	96.5	117.5	0.00	0.00	
1,100.0	11.06	53.85	1,087.9	78.4	112.0	136.7	0.00	0.00	
1,200.0	11.06	53.85	1,186.1	89.7	127.4	155.8	0.00	0.00	
1,300.0	11.06	53.85	1,284.2	101.0	142.9	175.0	0.00	0.00	
1,400.0	11.06	53.85	1,382.3	112.3	158.4	194.2	0.00	0.00	
1,500.0	11.06	53.85	1,480.5	123.7	173.9	213.4	0.00	0.00	
1,600.0	11.06	53.85	1,578.6	135.0	189.4	232.6	0.00	0.00	
1,626.9	11.06	53.85	1,605.0	138.0	193.6	237.7	0.00	0.00	Para Creek
1,700.0	11.06	53.85	1,676.8	146.3	204.9	251.8	0.00	0.00	
1,800.0	11.06	53.85	1,774.9	157.6	220.4	270.9	0.00	0.00	
1,900.0	11.06	53.85	1,873.1	168.9	235.9	290.1	0.00	0.00	
1,932.5	11.06	53.85	1,905.0	172.6	240.9	296.4	0.00	0.00	Mahog Bench
1,993.7	11.06	53.85	1,965.0	179.5	250.4	308.1	0.00	0.00	Base B
2,000.0	11.06	53.85	1,971.2	180.2	251.4	309.3	0.00	0.00	
2,100.0	11.06	53.85	2,069.3	191.6	266.9	328.5	0.00	0.00	
2,200.0	11.06	53.85	2,167.5	202.9	282.4	347.7	0.00	0.00	
2,300.0	11.06	53.85	2,265.6	214.2	297.9	366.9	0.00	0.00	
2,400.0	11.06	53.85	2,363.8	225.5	313.3	386.1	0.00	0.00	
2,500.0	11.06	53.85	2,461.9	236.8	328.8	405.2	0.00	0.00	
2,600.0	11.06	53.85	2,560.1	248.1	344.3	424.4	0.00	0.00	
2,700.0	11.06	53.85	2,658.2	259.5	359.8	443.6	0.00	0.00	
2,800.0	11.06	53.85	2,756.3	270.8	375.3	462.8	0.00	0.00	
2,900.0	11.06	53.85	2,854.5	282.1	390.8	482.0	0.00	0.00	
3,000.0	11.06	53.85	2,952.6	293.4	406.3	501.2	0.00	0.00	
3,100.0	11.06	53.85	3,050.8	304.7	421.8	520.3	0.00	0.00	
3,200.0	11.06	53.85	3,148.9	316.0	437.3	539.5	0.00	0.00	
3,300.0	11.06	53.85	3,247.1	327.4	452.8	558.7	0.00	0.00	
3,400.0	11.06	53.85	3,345.2	338.7	468.3	577.9	0.00	0.00	
3,500.0	11.06	53.85	3,443.3	350.0	483.8	597.1	0.00	0.00	
3,600.0	11.06	53.85	3,541.5	361.3	499.2	616.3	0.00	0.00	
3,700.0	11.06	53.85	3,639.6	372.6	514.7	635.5	0.00	0.00	
3,800.0	11.06	53.85	3,737.8	383.9	530.2	654.6	0.00	0.00	
3,900.0	11.06	53.85	3,835.9	395.2	545.7	673.8	0.00	0.00	
4,000.0	11.06	53.85	3,934.1	406.6	561.2	693.0	0.00	0.00	
4,100.0	11.06	53.85	4,032.2	417.9	576.7	712.2	0.00	0.00	
4,200.0	11.06	53.85	4,130.3	429.2	592.2	731.4	0.00	0.00	
4,300.0	11.06	53.85	4,228.5	440.5	607.7	750.6	0.00	0.00	
4,400.0	11.06	53.85	4,326.6	451.8	623.2	769.7	0.00	0.00	
4,500.0	11.06	53.85	4,424.8	463.1	638.7	788.9	0.00	0.00	
4,600.0	11.06	53.85	4,522.9	474.5	654.2	808.1	0.00	0.00	
4,700.0	11.06	53.85	4,621.0	485.8	669.7	827.3	0.00	0.00	

# Cathedral Energy Services

## Planning Report

<b>Database:</b>	EDM 5000.1 US Multi Users DB	<b>Local Co-ordinate Reference:</b>	Well SGU 8502D-25
<b>Company:</b>	EnCana Oil & Gas (USA) Inc	<b>TVD Reference:</b>	KBE @ 8320.0ft (Original Well Elev)
<b>Project:</b>	Story Gulch	<b>MD Reference:</b>	KBE @ 8320.0ft (Original Well Elev)
<b>Site:</b>	F25 496	<b>North Reference:</b>	True
<b>Well:</b>	SGU 8502D-25	<b>Survey Calculation Method:</b>	Minimum Curvature
<b>Wellbore:</b>	DD		
<b>Design:</b>	Plan #1		

### Planned Survey

Measured Depth (ft)	Inclination (°)	Azimuth (°)	Vertical Depth (ft)	+N/-S (ft)	+E/-W (ft)	Vertical Section (ft)	Dogleg Rate (°/100ft)	Build Rate (°/100ft)	Comments / Formations
4,800.0	11.06	53.85	4,719.2	497.1	685.1	846.5	0.00	0.00	
4,900.0	11.06	53.85	4,817.3	508.4	700.6	865.7	0.00	0.00	
5,000.0	11.06	53.85	4,915.5	519.7	716.1	884.8	0.00	0.00	
5,100.0	11.06	53.85	5,013.6	531.0	731.6	904.0	0.00	0.00	
5,200.0	11.06	53.85	5,111.8	542.4	747.1	923.2	0.00	0.00	
5,300.0	11.06	53.85	5,209.9	553.7	762.6	942.4	0.00	0.00	
5,400.0	11.06	53.85	5,308.0	565.0	778.1	961.6	0.00	0.00	
5,500.0	11.06	53.85	5,406.2	576.3	793.6	980.8	0.00	0.00	
5,600.0	11.06	53.85	5,504.3	587.6	809.1	1,000.0	0.00	0.00	
5,600.7	11.06	53.85	5,505.0	587.7	809.2	1,000.1	0.00	0.00	Was G
5,700.0	11.06	53.85	5,602.5	598.9	824.6	1,019.1	0.00	0.00	
5,800.0	11.06	53.85	5,700.6	610.3	840.1	1,038.3	0.00	0.00	
5,900.0	11.06	53.85	5,798.8	621.6	855.6	1,057.5	0.00	0.00	
6,000.0	11.06	53.85	5,896.9	632.9	871.0	1,076.7	0.00	0.00	
6,100.0	11.06	53.85	5,995.0	644.2	886.5	1,095.9	0.00	0.00	
6,200.0	11.06	53.85	6,093.2	655.5	902.0	1,115.1	0.00	0.00	
6,300.0	11.06	53.85	6,191.3	666.8	917.5	1,134.2	0.00	0.00	
6,400.0	11.06	53.85	6,289.5	678.1	933.0	1,153.4	0.00	0.00	
6,500.0	11.06	53.85	6,387.6	689.5	948.5	1,172.6	0.00	0.00	
6,600.0	11.06	53.85	6,485.8	700.8	964.0	1,191.8	0.00	0.00	
6,700.0	11.06	53.85	6,583.9	712.1	979.5	1,211.0	0.00	0.00	
6,800.0	11.06	53.85	6,682.0	723.4	995.0	1,230.2	0.00	0.00	
6,900.0	11.06	53.85	6,780.2	734.7	1,010.5	1,249.4	0.00	0.00	
7,000.0	11.06	53.85	6,878.3	746.0	1,026.0	1,268.5	0.00	0.00	
7,100.0	11.06	53.85	6,976.5	757.4	1,041.5	1,287.7	0.00	0.00	
7,200.0	11.06	53.85	7,074.6	768.7	1,056.9	1,306.9	0.00	0.00	
7,300.0	11.06	53.85	7,172.8	780.0	1,072.4	1,326.1	0.00	0.00	
7,400.0	11.06	53.85	7,270.9	791.3	1,087.9	1,345.3	0.00	0.00	
7,500.0	11.06	53.85	7,369.0	802.6	1,103.4	1,364.5	0.00	0.00	
7,600.0	11.06	53.85	7,467.2	813.9	1,118.9	1,383.6	0.00	0.00	
7,700.0	11.06	53.85	7,565.3	825.3	1,134.4	1,402.8	0.00	0.00	
7,800.0	11.06	53.85	7,663.5	836.6	1,149.9	1,422.0	0.00	0.00	
7,900.0	11.06	53.85	7,761.6	847.9	1,165.4	1,441.2	0.00	0.00	
8,000.0	11.06	53.85	7,859.8	859.2	1,180.9	1,460.4	0.00	0.00	
8,100.0	11.06	53.85	7,957.9	870.5	1,196.4	1,479.6	0.00	0.00	
8,200.0	11.06	53.85	8,056.0	881.8	1,211.9	1,498.8	0.00	0.00	
8,300.0	11.06	53.85	8,154.2	893.2	1,227.4	1,517.9	0.00	0.00	
8,400.0	11.06	53.85	8,252.3	904.5	1,242.9	1,537.1	0.00	0.00	
8,426.8	11.06	53.85	8,278.6	907.5	1,247.0	1,542.3	0.00	0.00	Start Drop -3.00
8,500.0	8.86	53.85	8,350.7	915.0	1,257.2	1,554.9	3.00	-3.00	
8,600.0	5.86	53.85	8,449.9	922.5	1,267.6	1,567.7	3.00	-3.00	
8,700.0	2.86	53.85	8,549.6	927.0	1,273.7	1,575.3	3.00	-3.00	
8,755.5	1.20	53.85	8,605.0	928.2	1,275.3	1,577.3	3.00	-3.00	WF
8,795.5	0.00	0.00	8,645.0	928.4	1,275.6	1,577.7	3.00	-3.00	EOD; Inc=0° - TOG - F25 496 SGU 8502D-25 1
8,800.0	0.00	0.00	8,649.5	928.4	1,275.6	1,577.7	0.00	0.00	
8,900.0	0.00	0.00	8,749.5	928.4	1,275.6	1,577.7	0.00	0.00	
9,000.0	0.00	0.00	8,849.5	928.4	1,275.6	1,577.7	0.00	0.00	
9,100.0	0.00	0.00	8,949.5	928.4	1,275.6	1,577.7	0.00	0.00	
9,200.0	0.00	0.00	9,049.5	928.4	1,275.6	1,577.7	0.00	0.00	
9,300.0	0.00	0.00	9,149.5	928.4	1,275.6	1,577.7	0.00	0.00	
9,400.0	0.00	0.00	9,249.5	928.4	1,275.6	1,577.7	0.00	0.00	
9,500.0	0.00	0.00	9,349.5	928.4	1,275.6	1,577.7	0.00	0.00	

# Cathedral Energy Services

## Planning Report

<b>Database:</b>	EDM 5000.1 US Multi Users DB	<b>Local Co-ordinate Reference:</b>	Well SGU 8502D-25
<b>Company:</b>	EnCana Oil & Gas (USA) Inc	<b>TVD Reference:</b>	KBE @ 8320.0ft (Original Well Elev)
<b>Project:</b>	Story Gulch	<b>MD Reference:</b>	KBE @ 8320.0ft (Original Well Elev)
<b>Site:</b>	F25 496	<b>North Reference:</b>	True
<b>Well:</b>	SGU 8502D-25	<b>Survey Calculation Method:</b>	Minimum Curvature
<b>Wellbore:</b>	DD		
<b>Design:</b>	Plan #1		

### Planned Survey

Measured Depth (ft)	Inclination (°)	Azimuth (°)	Vertical Depth (ft)	+N/-S (ft)	+E/-W (ft)	Vertical Section (ft)	Dogleg Rate (°/100ft)	Build Rate (°/100ft)	Comments / Formations
9,600.0	0.00	0.00	9,449.5	928.4	1,275.6	1,577.7	0.00	0.00	
9,700.0	0.00	0.00	9,549.5	928.4	1,275.6	1,577.7	0.00	0.00	
9,800.0	0.00	0.00	9,649.5	928.4	1,275.6	1,577.7	0.00	0.00	
9,900.0	0.00	0.00	9,749.5	928.4	1,275.6	1,577.7	0.00	0.00	
10,000.0	0.00	0.00	9,849.5	928.4	1,275.6	1,577.7	0.00	0.00	
10,100.0	0.00	0.00	9,949.5	928.4	1,275.6	1,577.7	0.00	0.00	
10,200.0	0.00	0.00	10,049.5	928.4	1,275.6	1,577.7	0.00	0.00	
10,300.0	0.00	0.00	10,149.5	928.4	1,275.6	1,577.7	0.00	0.00	
10,400.0	0.00	0.00	10,249.5	928.4	1,275.6	1,577.7	0.00	0.00	
10,500.0	0.00	0.00	10,349.5	928.4	1,275.6	1,577.7	0.00	0.00	
10,600.0	0.00	0.00	10,449.5	928.4	1,275.6	1,577.7	0.00	0.00	
10,700.0	0.00	0.00	10,549.5	928.4	1,275.6	1,577.7	0.00	0.00	
10,800.0	0.00	0.00	10,649.5	928.4	1,275.6	1,577.7	0.00	0.00	
10,900.0	0.00	0.00	10,749.5	928.4	1,275.6	1,577.7	0.00	0.00	
11,000.0	0.00	0.00	10,849.5	928.4	1,275.6	1,577.7	0.00	0.00	
11,100.0	0.00	0.00	10,949.5	928.4	1,275.6	1,577.7	0.00	0.00	
11,200.0	0.00	0.00	11,049.5	928.4	1,275.6	1,577.7	0.00	0.00	
11,300.0	0.00	0.00	11,149.5	928.4	1,275.6	1,577.7	0.00	0.00	
11,400.0	0.00	0.00	11,249.5	928.4	1,275.6	1,577.7	0.00	0.00	
11,500.0	0.00	0.00	11,349.5	928.4	1,275.6	1,577.7	0.00	0.00	
11,600.0	0.00	0.00	11,449.5	928.4	1,275.6	1,577.7	0.00	0.00	
11,700.0	0.00	0.00	11,549.5	928.4	1,275.6	1,577.7	0.00	0.00	
11,800.0	0.00	0.00	11,649.5	928.4	1,275.6	1,577.7	0.00	0.00	
11,900.0	0.00	0.00	11,749.5	928.4	1,275.6	1,577.7	0.00	0.00	
12,000.0	0.00	0.00	11,849.5	928.4	1,275.6	1,577.7	0.00	0.00	
12,100.0	0.00	0.00	11,949.5	928.4	1,275.6	1,577.7	0.00	0.00	
12,200.0	0.00	0.00	12,049.5	928.4	1,275.6	1,577.7	0.00	0.00	
12,300.0	0.00	0.00	12,149.5	928.4	1,275.6	1,577.7	0.00	0.00	
12,400.0	0.00	0.00	12,249.5	928.4	1,275.6	1,577.7	0.00	0.00	
12,455.5	0.00	0.00	12,305.0	928.4	1,275.6	1,577.7	0.00	0.00	Rollins - F25 496 SGU 8502D-25 BHL
12,500.0	0.00	0.00	12,349.5	928.4	1,275.6	1,577.7	0.00	0.00	
12,600.0	0.00	0.00	12,449.5	928.4	1,275.6	1,577.7	0.00	0.00	
12,700.0	0.00	0.00	12,549.5	928.4	1,275.6	1,577.7	0.00	0.00	
12,785.5	0.00	0.00	12,635.0	928.4	1,275.6	1,577.7	0.00	0.00	Cozzette
12,800.0	0.00	0.00	12,649.5	928.4	1,275.6	1,577.7	0.00	0.00	
12,900.0	0.00	0.00	12,749.5	928.4	1,275.6	1,577.7	0.00	0.00	
12,975.5	0.00	0.00	12,825.0	928.4	1,275.6	1,577.7	0.00	0.00	Corcoran
13,000.0	0.00	0.00	12,849.5	928.4	1,275.6	1,577.7	0.00	0.00	
13,100.0	0.00	0.00	12,949.5	928.4	1,275.6	1,577.7	0.00	0.00	
13,200.0	0.00	0.00	13,049.5	928.4	1,275.6	1,577.7	0.00	0.00	
13,255.5	0.00	0.00	13,105.0	928.4	1,275.6	1,577.7	0.00	0.00	Sego
13,300.0	0.00	0.00	13,149.5	928.4	1,275.6	1,577.7	0.00	0.00	
13,400.0	0.00	0.00	13,249.5	928.4	1,275.6	1,577.7	0.00	0.00	
13,455.5	0.00	0.00	13,305.0	928.4	1,275.6	1,577.7	0.00	0.00	Lower Sego
13,500.0	0.00	0.00	13,349.5	928.4	1,275.6	1,577.7	0.00	0.00	
13,600.0	0.00	0.00	13,449.5	928.4	1,275.6	1,577.7	0.00	0.00	
13,700.0	0.00	0.00	13,549.5	928.4	1,275.6	1,577.7	0.00	0.00	
13,705.5	0.00	0.00	13,555.0	928.4	1,275.6	1,577.7	0.00	0.00	TD @ 13705.5'
13,800.0	0.00	0.00	13,649.5	928.4	1,275.6	1,577.7	0.00	0.00	
13,900.0	0.00	0.00	13,749.5	928.4	1,275.6	1,577.7	0.00	0.00	
13,955.5	0.00	0.00	13,805.0	928.4	1,275.6	1,577.7	0.00	0.00	

# Cathedral Energy Services

## Planning Report

<b>Database:</b>	EDM 5000.1 US Multi Users DB	<b>Local Co-ordinate Reference:</b>	Well SGU 8502D-25
<b>Company:</b>	EnCana Oil & Gas (USA) Inc	<b>TVD Reference:</b>	KBE @ 8320.0ft (Original Well Elev)
<b>Project:</b>	Story Gulch	<b>MD Reference:</b>	KBE @ 8320.0ft (Original Well Elev)
<b>Site:</b>	F25 496	<b>North Reference:</b>	True
<b>Well:</b>	SGU 8502D-25	<b>Survey Calculation Method:</b>	Minimum Curvature
<b>Wellbore:</b>	DD		
<b>Design:</b>	Plan #1		

Targets									
Target Name									
- hit/miss target	Dip Angle	Dip Dir.	TVD	+N/-S	+E/-W	Northing	Easting	Latitude	Longitude
- Shape	(°)	(°)	(ft)	(ft)	(ft)	(ft)	(ft)		
F25 496 SGU 8502D-25	0.00	0.00	8,645.0	928.4	1,275.6	1,682,080.66	2,264,113.30	39° 40' 37.30 N	108° 6' 53.19 W
- plan hits target center									
- Point									
F25 496 SGU 8502D-25	0.00	0.00	12,305.0	928.4	1,278.0	1,682,080.59	2,264,115.65	39° 40' 37.30 N	108° 6' 53.16 W
- plan misses target center by 2.3ft at 12455.5ft MD (12305.0 TVD, 928.4 N, 1275.6 E)									
- Rectangle (sides W30.0 H50.0 D0.0)									

Formations						
Measured Depth	Vertical Depth	Name	Lithology	Dip	Dip Direction	
(ft)	(ft)			(°)	(°)	
1,626.9	1,605.0	Para Creek		0.00		
1,932.5	1,905.0	Mahog Bench		0.00		
1,993.7	1,965.0	Base B		0.00		
5,600.7	5,505.0	Was G		0.00		
8,755.5	8,605.0	WF		0.00		
8,795.5	8,645.0	TOG		0.00		
12,455.5	12,305.0	Rollins		0.00		
12,785.5	12,635.0	Cozzette		0.00		
12,975.5	12,825.0	Corcoran		0.00		
13,255.5	13,105.0	Sego		0.00		
13,455.5	13,305.0	Lower Sego		0.00		

Plan Annotations				
Measured Depth	Vertical Depth	Local Coordinates		Comment
(ft)	(ft)	+N/-S (ft)	+E/-W (ft)	
200.0	200.0	0.0	0.0	KOP @ 200'
574.0	571.7	0.9	2.5	EOB; Inc=11.06°
8,426.8	8,278.6	18.9	30.5	Start Drop -3.00
8,795.5	8,645.0	907.5	1,247.0	EOD; Inc=0°
13,705.5	13,555.0	928.4	1,275.6	TD @ 13705.5'
13,955.5	13,805.0	928.4	1,275.6	Permit TD at 13955.5'