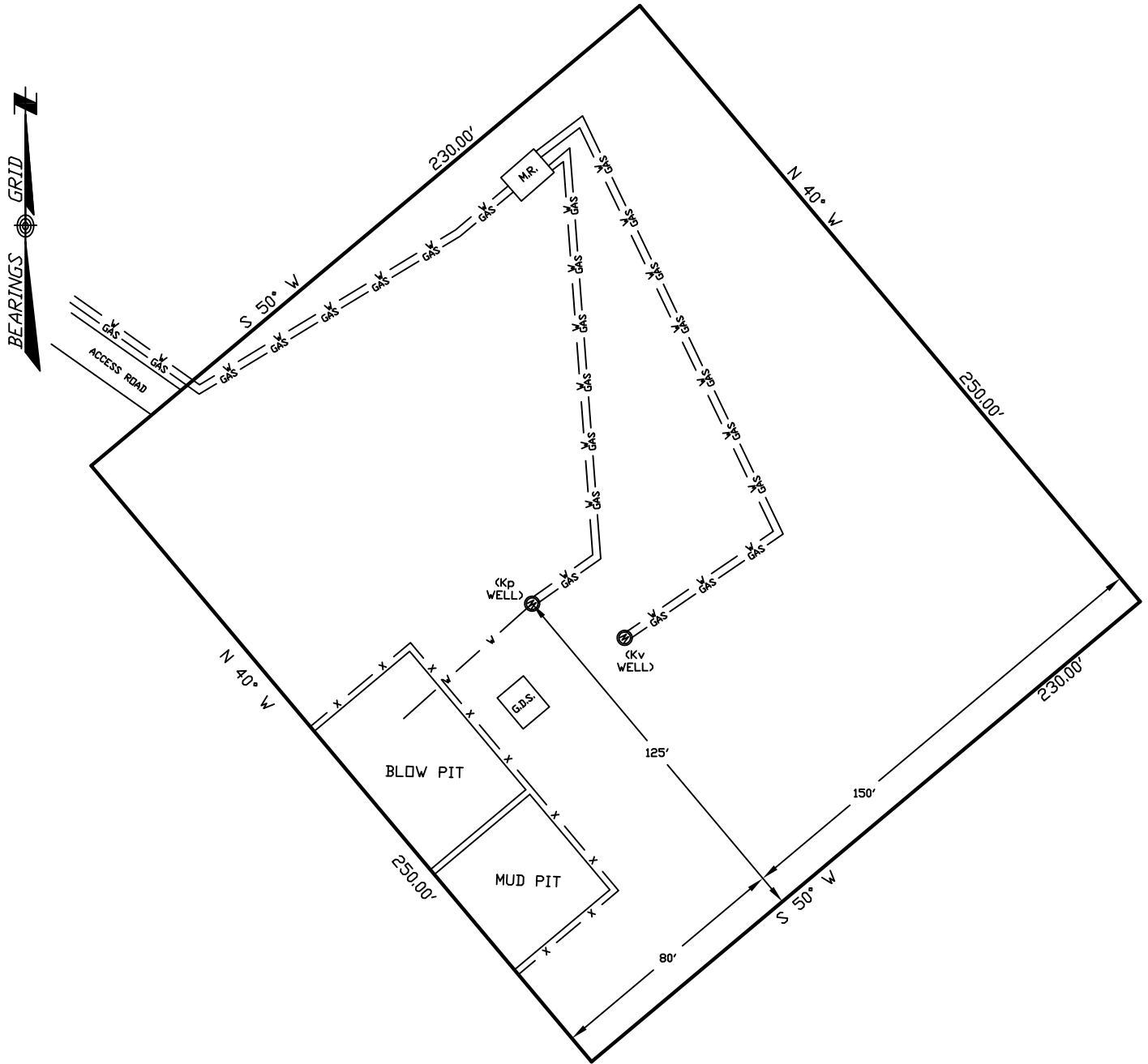


# WELLSITE/PRODUCTION EQUIPMENT LAYOUT

OPERATOR: Pioneer Natural Resources

WELL NAME: Brake Handle 24-22

SESW of SECTION 22 TOWNSHIP 32 S, RANGE 67 W OF THE 6TH P.M., IN LAS ANIMAS COUNTY



## NOTE:

MUD AND BLOW PITS WILL BE CONVERTED TO LINED EVAPORATION PITS FOR PRODUCTION.

WELLHEADS ARE TYPICALLY PCP DRIVE HEADS

## GRAPHIC SCALE



( IN FEET )

1 inch = 50 ft.

## LEGEND:



= WELLHEAD

= EXISTING WELLPAD

= FENCE (4 STRAND)

= 4" GAS GATHERING LINE

= 2" WATER LINE

M.R. = COMBO METER RUN AND WATER/GAS SEPARATOR

G.D.S. = GAS DRIVE SYSTEM

June 16, 2008

Date Platted

SHIELDS SURVEY L<sup>td</sup>. C<sup>o</sup>.  
Raton, New Mexico 87740  
(505)445-1232