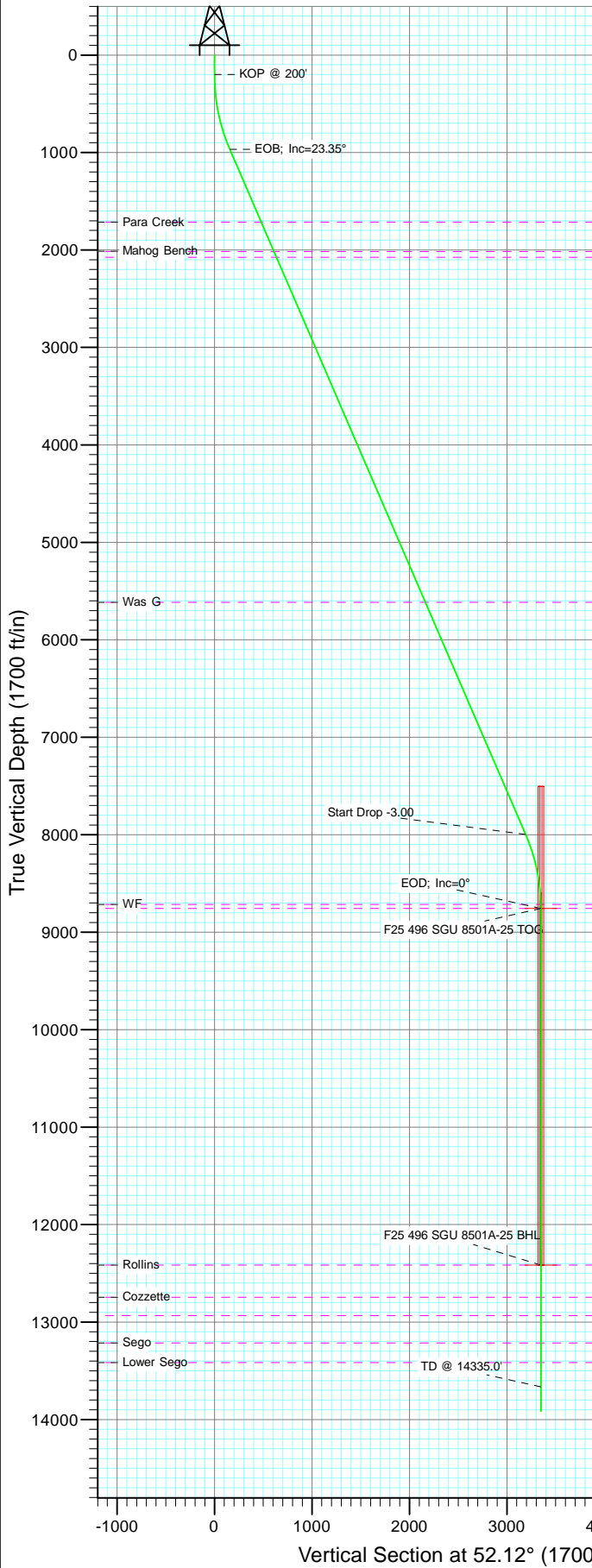
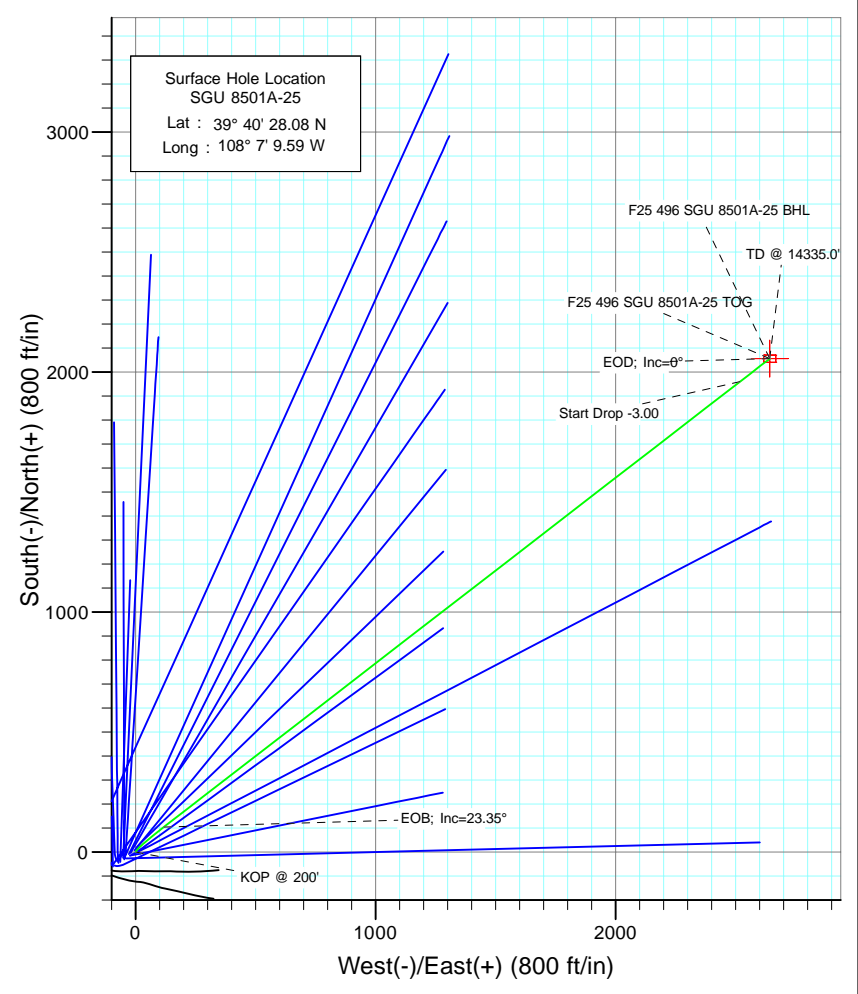




Project: Story Gulch
 Site: F25 496
 Well: SGU 8501A-25
 Wellbore: DD
 Design: Plan #1



SECTION DETAILS										
Sec	MD	Inc	Azi	TVD	+N/-S	+E/-W	Dleg	TFace	VSec	Target
1	0.0	0.00	0.00	0.0	0.0	0.0	0.00	0.00	0.0	
2	200.0	0.00	0.00	200.0	0.0	0.0	0.00	0.00	0.0	
3	333.3	4.00	30.00	333.2	4.0	2.3	3.00	30.00	4.3	
4	990.2	23.35	52.30	968.6	104.5	117.9	3.00	26.49	157.2	
5	8646.6	23.35	52.30	7998.0	1960.4	2518.9	0.00	0.00	3191.9	
6	9425.0	0.00	0.00	8755.0	2056.1	2642.7	3.00	180.00	3348.3	F25 496 SGU 8501A-25 TOG
7	13085.0	0.00	0.00	12415.0	2056.1	2642.7	0.00	0.00	3348.3	F25 496 SGU 8501A-25 BHL
8	14335.0	0.00	0.00	13665.0	2056.1	2642.7	0.00	0.00	3348.3	
9	14585.0	0.00	0.00	13915.0	2056.1	2642.7	0.00	0.00	3348.3	



Bottom Hole Location
 SGU 8501A-25
 Lat : 39 40 48.40 N
 Long. : 108 6 35.79 W

Azimuths to True North
 Magnetic North: 10.55°

Magnetic Field
 Strength: 52453.6snT
 Dip Angle: 65.90°
 Date: 5/6/2010
 Model: IGRF200510

FORMATION TOP DETAILS		
TVDPath	MDPath	Formation
1715.0	1803.1	Para Creek
2015.0	2129.9	Mahog Bench
2075.0	2195.2	Base B
5615.0	6051.0	Was G
8715.0	9385.0	WF
8755.0	9425.0	TOG
12415.0	13085.0	Rollins
12745.0	13415.0	Cozzette
12935.0	13605.0	Corcoran
13215.0	13885.0	Sego
13415.0	14085.0	Lower Sego

DESIGN DETAILS: Plan #1				
105XXX; BH				
KBE @ 8320.0ft (Original Well Elev)				
Target	Azimuth	Origin	N/S	E/W
F25 496 SGU 8501A-25 BHL	52.12	Slot	0.0	0.0
			0.0	0.0

Cathedral Energy Services

Planning Report

Database: EDM 5000.1 US Multi Users DB	Local Co-ordinate Reference: Well SGU 8501A-25
Company: EnCana Oil & Gas (USA) Inc	TVD Reference: KBE @ 8320.0ft (Original Well Elev)
Project: Story Gulch	MD Reference: KBE @ 8320.0ft (Original Well Elev)
Site: F25 496	North Reference: True
Well: SGU 8501A-25	Survey Calculation Method: Minimum Curvature
Wellbore: DD	
Design: Plan #1	

Project Story Gulch		
Map System: US State Plane 1983	System Datum: Mean Sea Level	
Geo Datum: North American Datum 1983		
Map Zone: Colorado Central Zone		

Site F25 496					
Site Position:		Northing:	1,681,091.06 ft	Latitude:	39° 40' 27.10 N
From:	Lat/Long	Easting:	2,262,632.54 ft	Longitude:	108° 7' 11.76 W
Position Uncertainty:	0.0 ft	Slot Radius:	13.200 in	Grid Convergence:	-1.65 °

Well SGU 8501A-25						
Well Position	+N/-S	0.0 ft	Northing:	1,681,185.17 ft	Latitude:	39° 40' 28.08 N
	+E/-W	0.0 ft	Easting:	2,262,804.63 ft	Longitude:	108° 7' 9.59 W
Position Uncertainty		0.0 ft	Wellhead Elevation:	ft	Ground Level:	8,298.0 ft

Wellbore DD					
Magnetics	Model Name	Sample Date	Declination	Dip Angle	Field Strength
	IGRF200510	5/6/2010	(°)	(°)	(nT)
			10.55	65.90	52,454

Design Plan #1					
Audit Notes:					
Version:	Phase:	PLAN	Tie On Depth:	0.0	
Vertical Section:	Depth From (TVD)	+N/-S	+E/-W	Direction	
	(ft)	(ft)	(ft)	(°)	
	0.0	0.0	0.0	52.12	

Plan Sections										
Measured Depth (ft)	Inclination (°)	Azimuth (°)	Vertical Depth (ft)	+N/-S (ft)	+E/-W (ft)	Dogleg Rate (°/100ft)	Build Rate (°/100ft)	Turn Rate (°/100ft)	TFO (°)	Target
0.0	0.00	0.00	0.0	0.0	0.0	0.00	0.00	0.00	0.00	
200.0	0.00	0.00	200.0	0.0	0.0	0.00	0.00	0.00	0.00	
333.3	4.00	30.00	333.2	4.0	2.3	3.00	3.00	0.00	30.00	
990.2	23.35	52.30	968.6	104.5	117.9	3.00	2.95	3.39	26.49	
8,646.6	23.35	52.30	7,998.0	1,960.4	2,518.9	0.00	0.00	0.00	0.00	
9,425.0	0.00	0.00	8,755.0	2,056.1	2,642.7	3.00	-3.00	0.00	180.00	F25 496 SGU 8501A-
13,085.0	0.00	0.00	12,415.0	2,056.1	2,642.7	0.00	0.00	0.00	0.00	F25 496 SGU 8501A-
14,335.0	0.00	0.00	13,665.0	2,056.1	2,642.7	0.00	0.00	0.00	0.00	
14,585.0	0.00	0.00	13,915.0	2,056.1	2,642.7	0.00	0.00	0.00	0.00	

Cathedral Energy Services

Planning Report

Database:	EDM 5000.1 US Multi Users DB	Local Co-ordinate Reference:	Well SGU 8501A-25
Company:	EnCana Oil & Gas (USA) Inc	TVD Reference:	KBE @ 8320.0ft (Original Well Elev)
Project:	Story Gulch	MD Reference:	KBE @ 8320.0ft (Original Well Elev)
Site:	F25 496	North Reference:	True
Well:	SGU 8501A-25	Survey Calculation Method:	Minimum Curvature
Wellbore:	DD		
Design:	Plan #1		

Planned Survey									
Measured Depth (ft)	Inclination (°)	Azimuth (°)	Vertical Depth (ft)	+N/-S (ft)	+E/-W (ft)	Vertical Section (ft)	Dogleg Rate (°/100ft)	Build Rate (°/100ft)	Comments / Formations
0.0	0.00	0.00	0.0	0.0	0.0	0.0	0.00	0.00	
100.0	0.00	0.00	100.0	0.0	0.0	0.0	0.00	0.00	
200.0	0.00	0.00	200.0	0.0	0.0	0.0	0.00	0.00	KOP @ 200'
300.0	3.00	30.00	300.0	2.3	1.3	2.4	3.00	3.00	
333.3	4.00	30.00	333.2	4.0	2.3	4.3	3.00	3.00	
400.0	5.86	38.77	399.6	8.7	5.6	9.8	3.00	2.79	
500.0	8.76	44.78	498.8	18.1	14.2	22.3	3.00	2.90	
600.0	11.72	47.80	597.2	30.3	27.1	40.0	3.00	2.95	
700.0	14.69	49.61	694.6	45.4	44.3	62.8	3.00	2.97	
800.0	17.67	50.82	790.6	63.2	65.7	90.6	3.00	2.98	
900.0	20.66	51.69	885.0	83.7	91.3	123.4	3.00	2.99	
990.2	23.35	52.30	968.7	104.5	117.9	157.2	3.00	2.99	EOB; Inc=23.35°
1,000.0	23.35	52.30	977.7	106.9	121.0	161.1	0.00	0.00	
1,100.0	23.35	52.30	1,069.5	131.1	152.4	200.7	0.00	0.00	
1,200.0	23.35	52.30	1,161.3	155.3	183.7	240.4	0.00	0.00	
1,300.0	23.35	52.30	1,253.1	179.6	215.1	280.0	0.00	0.00	
1,400.0	23.35	52.30	1,344.9	203.8	246.4	319.7	0.00	0.00	
1,500.0	23.35	52.30	1,436.7	228.1	277.8	359.3	0.00	0.00	
1,600.0	23.35	52.30	1,528.5	252.3	309.1	398.9	0.00	0.00	
1,700.0	23.35	52.30	1,620.3	276.5	340.5	438.6	0.00	0.00	
1,800.0	23.35	52.30	1,712.1	300.8	371.9	478.2	0.00	0.00	
1,803.1	23.35	52.30	1,715.0	301.5	372.8	479.4	0.00	0.00	Para Creek
1,900.0	23.35	52.30	1,804.0	325.0	403.2	517.8	0.00	0.00	
2,000.0	23.35	52.30	1,895.8	349.3	434.6	557.5	0.00	0.00	
2,100.0	23.35	52.30	1,987.6	373.5	465.9	597.1	0.00	0.00	
2,129.9	23.35	52.30	2,015.0	380.7	475.3	608.9	0.00	0.00	Mahog Bench
2,195.2	23.35	52.30	2,075.0	396.6	495.8	634.8	0.00	0.00	Base B
2,200.0	23.35	52.30	2,079.4	397.7	497.3	636.7	0.00	0.00	
2,300.0	23.35	52.30	2,171.2	422.0	528.7	676.4	0.00	0.00	
2,400.0	23.35	52.30	2,263.0	446.2	560.0	716.0	0.00	0.00	
2,500.0	23.35	52.30	2,354.8	470.5	591.4	755.6	0.00	0.00	
2,600.0	23.35	52.30	2,446.6	494.7	622.7	795.3	0.00	0.00	
2,700.0	23.35	52.30	2,538.4	518.9	654.1	834.9	0.00	0.00	
2,800.0	23.35	52.30	2,630.2	543.2	685.5	874.5	0.00	0.00	
2,900.0	23.35	52.30	2,722.0	567.4	716.8	914.2	0.00	0.00	
3,000.0	23.35	52.30	2,813.9	591.7	748.2	953.8	0.00	0.00	
3,100.0	23.35	52.30	2,905.7	615.9	779.5	993.5	0.00	0.00	
3,200.0	23.35	52.30	2,997.5	640.1	810.9	1,033.1	0.00	0.00	
3,300.0	23.35	52.30	3,089.3	664.4	842.3	1,072.7	0.00	0.00	
3,400.0	23.35	52.30	3,181.1	688.6	873.6	1,112.4	0.00	0.00	
3,500.0	23.35	52.30	3,272.9	712.9	905.0	1,152.0	0.00	0.00	
3,600.0	23.35	52.30	3,364.7	737.1	936.3	1,191.6	0.00	0.00	
3,700.0	23.35	52.30	3,456.5	761.3	967.7	1,231.3	0.00	0.00	
3,800.0	23.35	52.30	3,548.3	785.6	999.0	1,270.9	0.00	0.00	
3,900.0	23.35	52.30	3,640.1	809.8	1,030.4	1,310.5	0.00	0.00	
4,000.0	23.35	52.30	3,732.0	834.1	1,061.8	1,350.2	0.00	0.00	
4,100.0	23.35	52.30	3,823.8	858.3	1,093.1	1,389.8	0.00	0.00	
4,200.0	23.35	52.30	3,915.6	882.5	1,124.5	1,429.4	0.00	0.00	
4,300.0	23.35	52.30	4,007.4	906.8	1,155.8	1,469.1	0.00	0.00	
4,400.0	23.35	52.30	4,099.2	931.0	1,187.2	1,508.7	0.00	0.00	
4,500.0	23.35	52.30	4,191.0	955.3	1,218.6	1,548.3	0.00	0.00	
4,600.0	23.35	52.30	4,282.8	979.5	1,249.9	1,588.0	0.00	0.00	

Cathedral Energy Services

Planning Report

Database:	EDM 5000.1 US Multi Users DB	Local Co-ordinate Reference:	Well SGU 8501A-25
Company:	EnCana Oil & Gas (USA) Inc	TVD Reference:	KBE @ 8320.0ft (Original Well Elev)
Project:	Story Gulch	MD Reference:	KBE @ 8320.0ft (Original Well Elev)
Site:	F25 496	North Reference:	True
Well:	SGU 8501A-25	Survey Calculation Method:	Minimum Curvature
Wellbore:	DD		
Design:	Plan #1		

Planned Survey									
Measured Depth (ft)	Inclination (°)	Azimuth (°)	Vertical Depth (ft)	+N/-S (ft)	+E/-W (ft)	Vertical Section (ft)	Dogleg Rate (°/100ft)	Build Rate (°/100ft)	Comments / Formations
4,700.0	23.35	52.30	4,374.6	1,003.7	1,281.3	1,627.6	0.00	0.00	
4,800.0	23.35	52.30	4,466.4	1,028.0	1,312.6	1,667.3	0.00	0.00	
4,900.0	23.35	52.30	4,558.2	1,052.2	1,344.0	1,706.9	0.00	0.00	
5,000.0	23.35	52.30	4,650.1	1,076.5	1,375.4	1,746.5	0.00	0.00	
5,100.0	23.35	52.30	4,741.9	1,100.7	1,406.7	1,786.2	0.00	0.00	
5,200.0	23.35	52.30	4,833.7	1,124.9	1,438.1	1,825.8	0.00	0.00	
5,300.0	23.35	52.30	4,925.5	1,149.2	1,469.4	1,865.4	0.00	0.00	
5,400.0	23.35	52.30	5,017.3	1,173.4	1,500.8	1,905.1	0.00	0.00	
5,500.0	23.35	52.30	5,109.1	1,197.7	1,532.1	1,944.7	0.00	0.00	
5,600.0	23.35	52.30	5,200.9	1,221.9	1,563.5	1,984.3	0.00	0.00	
5,700.0	23.35	52.30	5,292.7	1,246.1	1,594.9	2,024.0	0.00	0.00	
5,800.0	23.35	52.30	5,384.5	1,270.4	1,626.2	2,063.6	0.00	0.00	
5,900.0	23.35	52.30	5,476.3	1,294.6	1,657.6	2,103.2	0.00	0.00	
6,000.0	23.35	52.30	5,568.1	1,318.9	1,688.9	2,142.9	0.00	0.00	
6,051.0	23.35	52.30	5,615.0	1,331.2	1,704.9	2,163.1	0.00	0.00	Was G
6,100.0	23.35	52.30	5,660.0	1,343.1	1,720.3	2,182.5	0.00	0.00	
6,200.0	23.35	52.30	5,751.8	1,367.4	1,751.7	2,222.1	0.00	0.00	
6,300.0	23.35	52.30	5,843.6	1,391.6	1,783.0	2,261.8	0.00	0.00	
6,400.0	23.35	52.30	5,935.4	1,415.8	1,814.4	2,301.4	0.00	0.00	
6,500.0	23.35	52.30	6,027.2	1,440.1	1,845.7	2,341.1	0.00	0.00	
6,600.0	23.35	52.30	6,119.0	1,464.3	1,877.1	2,380.7	0.00	0.00	
6,700.0	23.35	52.30	6,210.8	1,488.6	1,908.5	2,420.3	0.00	0.00	
6,800.0	23.35	52.30	6,302.6	1,512.8	1,939.8	2,460.0	0.00	0.00	
6,900.0	23.35	52.30	6,394.4	1,537.0	1,971.2	2,499.6	0.00	0.00	
7,000.0	23.35	52.30	6,486.2	1,561.3	2,002.5	2,539.2	0.00	0.00	
7,100.0	23.35	52.30	6,578.1	1,585.5	2,033.9	2,578.9	0.00	0.00	
7,200.0	23.35	52.30	6,669.9	1,609.8	2,065.3	2,618.5	0.00	0.00	
7,300.0	23.35	52.30	6,761.7	1,634.0	2,096.6	2,658.1	0.00	0.00	
7,400.0	23.35	52.30	6,853.5	1,658.2	2,128.0	2,697.8	0.00	0.00	
7,500.0	23.35	52.30	6,945.3	1,682.5	2,159.3	2,737.4	0.00	0.00	
7,600.0	23.35	52.30	7,037.1	1,706.7	2,190.7	2,777.0	0.00	0.00	
7,700.0	23.35	52.30	7,128.9	1,731.0	2,222.0	2,816.7	0.00	0.00	
7,800.0	23.35	52.30	7,220.7	1,755.2	2,253.4	2,856.3	0.00	0.00	
7,900.0	23.35	52.30	7,312.5	1,779.4	2,284.8	2,896.0	0.00	0.00	
8,000.0	23.35	52.30	7,404.3	1,803.7	2,316.1	2,935.6	0.00	0.00	
8,100.0	23.35	52.30	7,496.2	1,827.9	2,347.5	2,975.2	0.00	0.00	
8,200.0	23.35	52.30	7,588.0	1,852.2	2,378.8	3,014.9	0.00	0.00	
8,300.0	23.35	52.30	7,679.8	1,876.4	2,410.2	3,054.5	0.00	0.00	
8,400.0	23.35	52.30	7,771.6	1,900.6	2,441.6	3,094.1	0.00	0.00	
8,500.0	23.35	52.30	7,863.4	1,924.9	2,472.9	3,133.8	0.00	0.00	
8,600.0	23.35	52.30	7,955.2	1,949.1	2,504.3	3,173.4	0.00	0.00	
8,646.6	23.35	52.30	7,998.0	1,960.4	2,518.9	3,191.9	0.00	0.00	Start Drop -3.00
8,700.0	21.75	52.30	8,047.3	1,972.9	2,535.1	3,212.3	3.00	-3.00	
8,800.0	18.75	52.30	8,141.1	1,994.1	2,562.5	3,247.0	3.00	-3.00	
8,900.0	15.75	52.30	8,236.6	2,012.2	2,585.9	3,276.6	3.00	-3.00	
9,000.0	12.75	52.30	8,333.5	2,027.3	2,605.4	3,301.2	3.00	-3.00	
9,100.0	9.75	52.30	8,431.6	2,039.2	2,620.8	3,320.7	3.00	-3.00	
9,200.0	6.75	52.30	8,530.5	2,048.0	2,632.2	3,335.1	3.00	-3.00	
9,300.0	3.75	52.30	8,630.1	2,053.6	2,639.4	3,344.2	3.00	-3.00	
9,385.0	1.20	52.30	8,715.0	2,055.8	2,642.3	3,347.9	3.00	-3.00	WF
9,400.0	0.75	52.30	8,730.0	2,056.0	2,642.5	3,348.1	3.00	-3.00	
9,425.0	0.00	0.00	8,755.0	2,056.1	2,642.7	3,348.3	3.00	-3.00	EOD; Inc=0° - TOG - F25 496 SGU 8501A-25 T

Cathedral Energy Services

Planning Report

Database:	EDM 5000.1 US Multi Users DB	Local Co-ordinate Reference:	Well SGU 8501A-25
Company:	EnCana Oil & Gas (USA) Inc	TVD Reference:	KBE @ 8320.0ft (Original Well Elev)
Project:	Story Gulch	MD Reference:	KBE @ 8320.0ft (Original Well Elev)
Site:	F25 496	North Reference:	True
Well:	SGU 8501A-25	Survey Calculation Method:	Minimum Curvature
Wellbore:	DD		
Design:	Plan #1		

Planned Survey									
Measured Depth (ft)	Inclination (°)	Azimuth (°)	Vertical Depth (ft)	+N/-S (ft)	+E/-W (ft)	Vertical Section (ft)	Dogleg Rate (°/100ft)	Build Rate (°/100ft)	Comments / Formations
9,500.0	0.00	0.00	8,830.0	2,056.1	2,642.7	3,348.3	0.00	0.00	
9,600.0	0.00	0.00	8,930.0	2,056.1	2,642.7	3,348.3	0.00	0.00	
9,700.0	0.00	0.00	9,030.0	2,056.1	2,642.7	3,348.3	0.00	0.00	
9,800.0	0.00	0.00	9,130.0	2,056.1	2,642.7	3,348.3	0.00	0.00	
9,900.0	0.00	0.00	9,230.0	2,056.1	2,642.7	3,348.3	0.00	0.00	
10,000.0	0.00	0.00	9,330.0	2,056.1	2,642.7	3,348.3	0.00	0.00	
10,100.0	0.00	0.00	9,430.0	2,056.1	2,642.7	3,348.3	0.00	0.00	
10,200.0	0.00	0.00	9,530.0	2,056.1	2,642.7	3,348.3	0.00	0.00	
10,300.0	0.00	0.00	9,630.0	2,056.1	2,642.7	3,348.3	0.00	0.00	
10,400.0	0.00	0.00	9,730.0	2,056.1	2,642.7	3,348.3	0.00	0.00	
10,500.0	0.00	0.00	9,830.0	2,056.1	2,642.7	3,348.3	0.00	0.00	
10,600.0	0.00	0.00	9,930.0	2,056.1	2,642.7	3,348.3	0.00	0.00	
10,700.0	0.00	0.00	10,030.0	2,056.1	2,642.7	3,348.3	0.00	0.00	
10,800.0	0.00	0.00	10,130.0	2,056.1	2,642.7	3,348.3	0.00	0.00	
10,900.0	0.00	0.00	10,230.0	2,056.1	2,642.7	3,348.3	0.00	0.00	
11,000.0	0.00	0.00	10,330.0	2,056.1	2,642.7	3,348.3	0.00	0.00	
11,100.0	0.00	0.00	10,430.0	2,056.1	2,642.7	3,348.3	0.00	0.00	
11,200.0	0.00	0.00	10,530.0	2,056.1	2,642.7	3,348.3	0.00	0.00	
11,300.0	0.00	0.00	10,630.0	2,056.1	2,642.7	3,348.3	0.00	0.00	
11,400.0	0.00	0.00	10,730.0	2,056.1	2,642.7	3,348.3	0.00	0.00	
11,500.0	0.00	0.00	10,830.0	2,056.1	2,642.7	3,348.3	0.00	0.00	
11,600.0	0.00	0.00	10,930.0	2,056.1	2,642.7	3,348.3	0.00	0.00	
11,700.0	0.00	0.00	11,030.0	2,056.1	2,642.7	3,348.3	0.00	0.00	
11,800.0	0.00	0.00	11,130.0	2,056.1	2,642.7	3,348.3	0.00	0.00	
11,900.0	0.00	0.00	11,230.0	2,056.1	2,642.7	3,348.3	0.00	0.00	
12,000.0	0.00	0.00	11,330.0	2,056.1	2,642.7	3,348.3	0.00	0.00	
12,100.0	0.00	0.00	11,430.0	2,056.1	2,642.7	3,348.3	0.00	0.00	
12,200.0	0.00	0.00	11,530.0	2,056.1	2,642.7	3,348.3	0.00	0.00	
12,300.0	0.00	0.00	11,630.0	2,056.1	2,642.7	3,348.3	0.00	0.00	
12,400.0	0.00	0.00	11,730.0	2,056.1	2,642.7	3,348.3	0.00	0.00	
12,500.0	0.00	0.00	11,830.0	2,056.1	2,642.7	3,348.3	0.00	0.00	
12,600.0	0.00	0.00	11,930.0	2,056.1	2,642.7	3,348.3	0.00	0.00	
12,700.0	0.00	0.00	12,030.0	2,056.1	2,642.7	3,348.3	0.00	0.00	
12,800.0	0.00	0.00	12,130.0	2,056.1	2,642.7	3,348.3	0.00	0.00	
12,900.0	0.00	0.00	12,230.0	2,056.1	2,642.7	3,348.3	0.00	0.00	
13,000.0	0.00	0.00	12,330.0	2,056.1	2,642.7	3,348.3	0.00	0.00	
13,085.0	0.00	0.00	12,415.0	2,056.1	2,642.7	3,348.3	0.00	0.00	Rollins - F25 496 SGU 8501A-25 BHL
13,100.0	0.00	0.00	12,430.0	2,056.1	2,642.7	3,348.3	0.00	0.00	
13,200.0	0.00	0.00	12,530.0	2,056.1	2,642.7	3,348.3	0.00	0.00	
13,300.0	0.00	0.00	12,630.0	2,056.1	2,642.7	3,348.3	0.00	0.00	
13,400.0	0.00	0.00	12,730.0	2,056.1	2,642.7	3,348.3	0.00	0.00	
13,415.0	0.00	0.00	12,745.0	2,056.1	2,642.7	3,348.3	0.00	0.00	Cozzette
13,500.0	0.00	0.00	12,830.0	2,056.1	2,642.7	3,348.3	0.00	0.00	
13,600.0	0.00	0.00	12,930.0	2,056.1	2,642.7	3,348.3	0.00	0.00	
13,605.0	0.00	0.00	12,935.0	2,056.1	2,642.7	3,348.3	0.00	0.00	Corcoran
13,700.0	0.00	0.00	13,030.0	2,056.1	2,642.7	3,348.3	0.00	0.00	
13,800.0	0.00	0.00	13,130.0	2,056.1	2,642.7	3,348.3	0.00	0.00	
13,885.0	0.00	0.00	13,215.0	2,056.1	2,642.7	3,348.3	0.00	0.00	Sego
13,900.0	0.00	0.00	13,230.0	2,056.1	2,642.7	3,348.3	0.00	0.00	
14,000.0	0.00	0.00	13,330.0	2,056.1	2,642.7	3,348.3	0.00	0.00	
14,085.0	0.00	0.00	13,415.0	2,056.1	2,642.7	3,348.3	0.00	0.00	Lower Sego
14,100.0	0.00	0.00	13,430.0	2,056.1	2,642.7	3,348.3	0.00	0.00	

Cathedral Energy Services

Planning Report

Database: EDM 5000.1 US Multi Users DB	Local Co-ordinate Reference: Well SGU 8501A-25
Company: EnCana Oil & Gas (USA) Inc	TVD Reference: KBE @ 8320.0ft (Original Well Elev)
Project: Story Gulch	MD Reference: KBE @ 8320.0ft (Original Well Elev)
Site: F25 496	North Reference: True
Well: SGU 8501A-25	Survey Calculation Method: Minimum Curvature
Wellbore: DD	
Design: Plan #1	

Planned Survey

Measured Depth (ft)	Inclination (°)	Azimuth (°)	Vertical Depth (ft)	+N/-S (ft)	+E/-W (ft)	Vertical Section (ft)	Dogleg Rate (°/100ft)	Build Rate (°/100ft)	Comments / Formations
14,200.0	0.00	0.00	13,530.0	2,056.1	2,642.7	3,348.3	0.00	0.00	
14,300.0	0.00	0.00	13,630.0	2,056.1	2,642.7	3,348.3	0.00	0.00	
14,335.0	0.00	0.00	13,665.0	2,056.1	2,642.7	3,348.3	0.00	0.00	TD @ 14335.0'
14,400.0	0.00	0.00	13,730.0	2,056.1	2,642.7	3,348.3	0.00	0.00	
14,500.0	0.00	0.00	13,830.0	2,056.1	2,642.7	3,348.3	0.00	0.00	
14,585.0	0.00	0.00	13,915.0	2,056.1	2,642.7	3,348.3	0.00	0.00	

Targets

Target Name	Dip Angle (°)	Dip Dir. (°)	TVD (ft)	+N/-S (ft)	+E/-W (ft)	Northing (ft)	Easting (ft)	Latitude	Longitude
F25 496 SGU 8501A-25 - hit/miss target - Shape - plan hits target center - Rectangle (sides W30.0 H50.0 D0.0)	0.00	0.00	12,415.0	2,056.1	2,642.7	1,683,164.22	2,265,505.46	39° 40' 48.40 N	108° 6' 35.79 W
F25 496 SGU 8501A-25 - plan hits target center - Point	0.00	0.00	8,755.0	2,056.1	2,642.7	1,683,164.22	2,265,505.46	39° 40' 48.40 N	108° 6' 35.79 W

Formations

Measured Depth (ft)	Vertical Depth (ft)	Name	Lithology	Dip (°)	Dip Direction (°)
1,803.1	1,715.0	Para Creek		0.00	
2,129.9	2,015.0	Mahog Bench		0.00	
2,195.2	2,075.0	Base B		0.00	
6,051.0	5,615.0	Was G		0.00	
9,385.0	8,715.0	WF		0.00	
9,425.0	8,755.0	TOG		0.00	
13,085.0	12,415.0	Rollins		0.00	
13,415.0	12,745.0	Cozzette		0.00	
13,605.0	12,935.0	Corcoran		0.00	
13,885.0	13,215.0	Sego		0.00	
14,085.0	13,415.0	Lower Sego		0.00	

Plan Annotations

Measured Depth (ft)	Vertical Depth (ft)	Local Coordinates		Comment
		+N/-S (ft)	+E/-W (ft)	
200.0	200.0	0.0	0.0	KOP @ 200'
990.2	968.6	4.0	2.3	EOB; Inc=23.35°
8,646.6	7,998.0	104.5	117.9	Start Drop -3.00
9,425.0	8,755.0	1,960.4	2,518.9	EOD; Inc=0°
14,335.0	13,665.0	2,056.1	2,642.7	TD @ 14335.0'
14,585.0	13,915.0	2,056.1	2,642.7	Permit TD @ 14585.0'