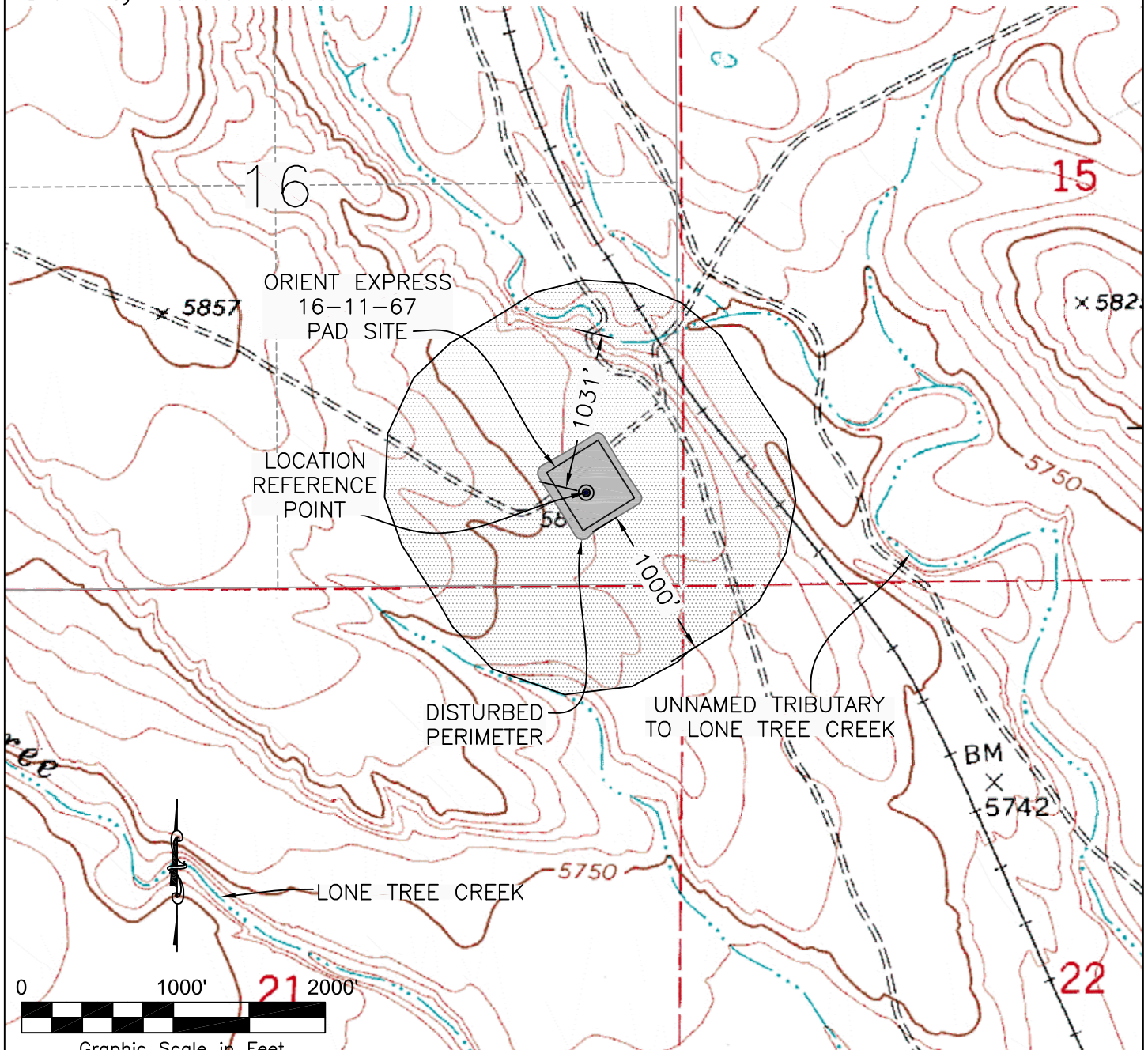


HYDROLOGY MAP
ORIENT EXPRESS 16-11-67

Western Land Surveying of Sheridan, Wyoming, in accordance with a request from Slawson Exploration Company, Inc, has determined the location of Orient Express 16-11-67 to be 605 feet FSL, and 605 feet FEL, (90° off Section Lines) of Section 16, Township 11N, Range 67W, of the 6th Principal Meridian, Weld County, Colorado.

Date: Staked on 4/27/2010, drawn on 5/27/2010, revised on 6/22/2010
 Staked by: Jason Levanen
 Drawn by: Heather Hairston



Graphic Scale in Feet
1 Inch = 1000 Feet



DP: L:...Slawson\Permitting_Booklets\Orient... Date: 5/27/2010

SLAWSON EXPLORATION COMPANY, INC
ORIENT EXPRESS 16-11-67

SL: SE1/4 SE1/4, SECTION 16, T11N R67W
 BL: NW1/4 NE1/4 SECTION 16, T11N R67W
 6TH PM, WELD COUNTY, COLORADO