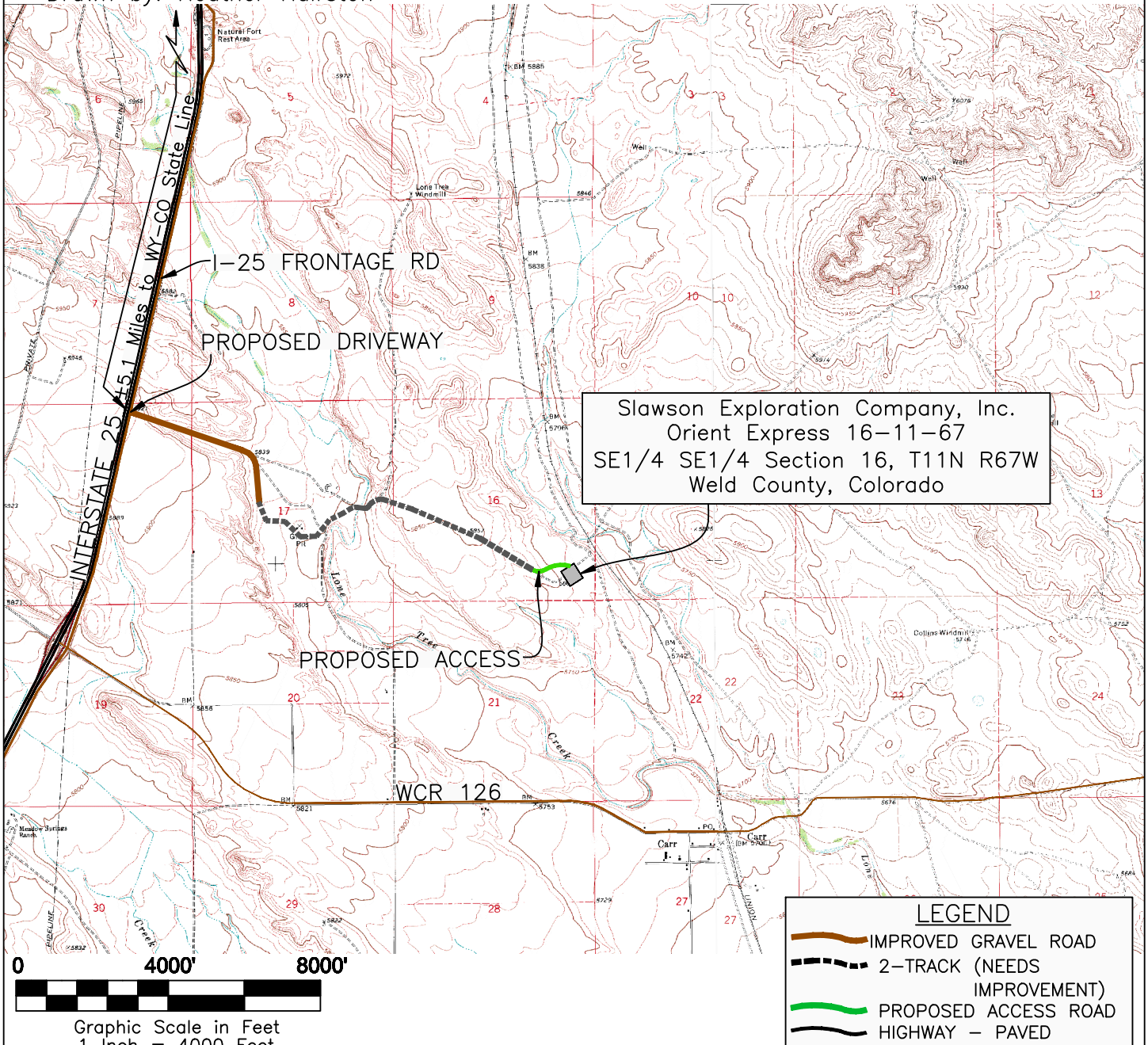


**ACCESS ROAD MAP  
ORIENT EXPRESS 16-11-67**

Western Land Surveying of Sheridan, Wyoming, in accordance with a request from Slawson Exploration Company, Inc, has determined the location of Orient Express 16-11-67 to be 605 feet FSL, and 605 feet FEL, (90° off Section Lines) of Section 16, Township 11N, Range 67W, of the 6th Principal Meridian, Weld County, Colorado.

Date: Staked on 4/27/2010, drawn on 5/27/2010  
 Staked by: Jason Levanen  
 Drawn by: Heather Hairston



Slawson Exploration Company, Inc.  
 Orient Express 16-11-67  
 SE1/4 SE1/4 Section 16, T11N R67W  
 Weld County, Colorado



**WESTERN LAND SERVICES**  
 Sheridan, WY 82801 (307)673-1817

DP: L... (Slawson/Permitting\_Booklets/Orient... Date: 5/27/2010

SLAWSON EXPLORATION COMPANY, INC  
 ORIENT EXPRESS 16-11-67

SL: SE1/4 SE1/4, SECTION 16, T11N R67W  
 BL: NW1/4 NE1/4 SECTION 16, T11N R67W  
 6TH PM, WELD COUNTY, COLORADO