

Noble Energy

Weld County, CO
Sec. 1-T5N-R64W
Lucci B01-99HZ

Plan #1

Plan: Plan #1 Proposal

Sperry Drilling Services Proposal Report

29 January, 2010

Well Coordinates: 1,402,731.86 N, 3,276,879.10 E (40° 26' 04.70" N, 104° 30' 19.18" W)

Ground Level: 4,612.00 ft

Local Coordinate Origin:

Centered on Well Lucci B01-99HZ

Viewing Datum:

RKB 13' @ 4625.00ft (Original Well Elev)

TVDs to System:

N

North Reference:

True

Unit System:

API - US Survey Feet - Custom

Geodetic Scale Factor Applied

Version: 2003.16 Build: 431

HALLIBURTON

Plan Report for Lucci B01-99HZ - Plan #1 Proposal

Measured Depth (ft)	Inclination (°)	Azimuth (°)	Vertical Depth (ft)	+N/-S (ft)	+E/-W (ft)	Vertical Section (ft)	Dogleg Rate (°/100ft)	Build Rate (°/100ft)	Turn Rate (°/100ft)	Toolface Azimuth (°)
0.00	0.00	0.00	0.00	0.00	0.00	0.00	0.00	0.00	0.00	0.00
100.00	0.00	0.00	100.00	0.00	0.00	0.00	0.00	0.00	0.00	0.00
200.00	0.00	0.00	200.00	0.00	0.00	0.00	0.00	0.00	0.00	0.00
300.00	0.00	0.00	300.00	0.00	0.00	0.00	0.00	0.00	0.00	0.00
400.00	0.00	0.00	400.00	0.00	0.00	0.00	0.00	0.00	0.00	0.00
500.00	0.00	0.00	500.00	0.00	0.00	0.00	0.00	0.00	0.00	0.00
600.00	0.00	0.00	600.00	0.00	0.00	0.00	0.00	0.00	0.00	0.00
700.00	0.00	0.00	700.00	0.00	0.00	0.00	0.00	0.00	0.00	0.00
800.00	0.00	0.00	800.00	0.00	0.00	0.00	0.00	0.00	0.00	0.00
900.00	0.00	0.00	900.00	0.00	0.00	0.00	0.00	0.00	0.00	0.00
1,000.00	0.00	0.00	1,000.00	0.00	0.00	0.00	0.00	0.00	0.00	0.00
1,100.00	0.00	0.00	1,100.00	0.00	0.00	0.00	0.00	0.00	0.00	0.00
1,200.00	0.00	0.00	1,200.00	0.00	0.00	0.00	0.00	0.00	0.00	0.00
1,300.00	0.00	0.00	1,300.00	0.00	0.00	0.00	0.00	0.00	0.00	0.00
1,400.00	0.00	0.00	1,400.00	0.00	0.00	0.00	0.00	0.00	0.00	0.00
1,500.00	0.00	0.00	1,500.00	0.00	0.00	0.00	0.00	0.00	0.00	0.00
1,600.00	0.00	0.00	1,600.00	0.00	0.00	0.00	0.00	0.00	0.00	0.00
1,700.00	0.00	0.00	1,700.00	0.00	0.00	0.00	0.00	0.00	0.00	0.00
1,800.00	0.00	0.00	1,800.00	0.00	0.00	0.00	0.00	0.00	0.00	0.00
1,900.00	0.00	0.00	1,900.00	0.00	0.00	0.00	0.00	0.00	0.00	0.00
2,000.00	0.00	0.00	2,000.00	0.00	0.00	0.00	0.00	0.00	0.00	0.00
2,100.00	0.00	0.00	2,100.00	0.00	0.00	0.00	0.00	0.00	0.00	0.00
2,200.00	0.00	0.00	2,200.00	0.00	0.00	0.00	0.00	0.00	0.00	0.00
2,300.00	0.00	0.00	2,300.00	0.00	0.00	0.00	0.00	0.00	0.00	0.00
2,400.00	0.00	0.00	2,400.00	0.00	0.00	0.00	0.00	0.00	0.00	0.00
2,500.00	0.00	0.00	2,500.00	0.00	0.00	0.00	0.00	0.00	0.00	0.00
2,600.00	0.00	0.00	2,600.00	0.00	0.00	0.00	0.00	0.00	0.00	0.00
2,700.00	0.00	0.00	2,700.00	0.00	0.00	0.00	0.00	0.00	0.00	0.00
2,800.00	0.00	0.00	2,800.00	0.00	0.00	0.00	0.00	0.00	0.00	0.00
2,900.00	0.00	0.00	2,900.00	0.00	0.00	0.00	0.00	0.00	0.00	0.00
3,000.00	0.00	0.00	3,000.00	0.00	0.00	0.00	0.00	0.00	0.00	0.00
3,100.00	0.00	0.00	3,100.00	0.00	0.00	0.00	0.00	0.00	0.00	0.00
3,200.00	0.00	0.00	3,200.00	0.00	0.00	0.00	0.00	0.00	0.00	0.00
3,300.00	0.00	0.00	3,300.00	0.00	0.00	0.00	0.00	0.00	0.00	0.00
3,400.00	0.00	0.00	3,400.00	0.00	0.00	0.00	0.00	0.00	0.00	0.00
3,500.00	0.00	0.00	3,500.00	0.00	0.00	0.00	0.00	0.00	0.00	0.00
3,600.00	0.00	0.00	3,600.00	0.00	0.00	0.00	0.00	0.00	0.00	0.00
3,700.00	0.00	0.00	3,700.00	0.00	0.00	0.00	0.00	0.00	0.00	0.00
3,800.00	0.00	0.00	3,800.00	0.00	0.00	0.00	0.00	0.00	0.00	0.00
3,900.00	0.00	0.00	3,900.00	0.00	0.00	0.00	0.00	0.00	0.00	0.00
4,000.00	0.00	0.00	4,000.00	0.00	0.00	0.00	0.00	0.00	0.00	0.00
4,100.00	0.00	0.00	4,100.00	0.00	0.00	0.00	0.00	0.00	0.00	0.00
4,200.00	0.00	0.00	4,200.00	0.00	0.00	0.00	0.00	0.00	0.00	0.00
4,300.00	0.00	0.00	4,300.00	0.00	0.00	0.00	0.00	0.00	0.00	0.00
4,400.00	0.00	0.00	4,400.00	0.00	0.00	0.00	0.00	0.00	0.00	0.00
4,500.00	0.00	0.00	4,500.00	0.00	0.00	0.00	0.00	0.00	0.00	0.00
4,600.00	0.00	0.00	4,600.00	0.00	0.00	0.00	0.00	0.00	0.00	0.00
4,700.00	0.00	0.00	4,700.00	0.00	0.00	0.00	0.00	0.00	0.00	0.00
4,800.00	0.00	0.00	4,800.00	0.00	0.00	0.00	0.00	0.00	0.00	0.00
4,900.00	0.00	0.00	4,900.00	0.00	0.00	0.00	0.00	0.00	0.00	0.00
5,000.00	0.00	0.00	5,000.00	0.00	0.00	0.00	0.00	0.00	0.00	0.00
5,100.00	0.00	0.00	5,100.00	0.00	0.00	0.00	0.00	0.00	0.00	0.00
5,200.00	0.00	0.00	5,200.00	0.00	0.00	0.00	0.00	0.00	0.00	0.00
5,300.00	0.00	0.00	5,300.00	0.00	0.00	0.00	0.00	0.00	0.00	0.00
5,400.00	0.00	0.00	5,400.00	0.00	0.00	0.00	0.00	0.00	0.00	0.00
5,500.00	0.00	0.00	5,500.00	0.00	0.00	0.00	0.00	0.00	0.00	0.00
5,600.00	0.00	0.00	5,600.00	0.00	0.00	0.00	0.00	0.00	0.00	0.00
5,700.00	0.00	0.00	5,700.00	0.00	0.00	0.00	0.00	0.00	0.00	0.00
5,800.00	0.00	0.00	5,800.00	0.00	0.00	0.00	0.00	0.00	0.00	0.00

Plan Report for Lucci B01-99HZ - Plan #1 Proposal

Measured Depth (ft)	Inclination (°)	Azimuth (°)	Vertical Depth (ft)	+N/-S (ft)	+E/-W (ft)	Vertical Section (ft)	Dogleg Rate (°/100ft)	Build Rate (°/100ft)	Turn Rate (°/100ft)	Toolface Azimuth (°)
5,850.96	0.00	0.00	5,850.96	0.00	0.00	0.00	0.00	0.00	0.00	0.00
Kickoff at 5850.96ft										
5,900.00	3.92	120.00	5,899.96	-0.84	1.45	1.64	8.00	8.00	0.00	120.00
6,000.00	11.92	120.00	5,998.93	-7.73	13.38	15.12	8.00	8.00	0.00	0.00
6,100.00	19.92	120.00	6,095.01	-21.43	37.12	41.93	8.00	8.00	0.00	0.00
6,200.00	27.92	120.00	6,186.35	-41.69	72.21	81.57	8.00	8.00	0.00	0.00
6,300.00	35.92	120.00	6,271.15	-68.11	117.97	133.26	8.00	8.00	0.00	0.00
6,325.00	37.92	120.00	6,291.14	-75.62	130.97	147.95	8.00	8.00	0.00	0.00
Build Rate = 8.00°/100ft										
6,400.00	43.92	120.00	6,347.78	-100.17	173.50	195.99	8.00	8.00	0.00	0.00
6,500.00	51.92	120.00	6,414.74	-137.25	237.73	268.55	8.00	8.00	0.00	0.00
6,537.36	54.91	120.00	6,437.00	-152.25	263.70	297.89	8.00	8.00	0.00	0.00
Niobrara										
6,573.46	57.80	120.00	6,457.00	-167.28	289.73	327.29	8.00	8.00	0.00	0.00
Niobrara A										
6,600.00	59.92	120.00	6,470.72	-178.63	309.40	349.51	8.00	8.00	0.00	0.00
6,618.94	61.44	120.00	6,480.00	-186.89	323.71	365.67	8.00	8.00	0.00	0.00
Niobrara A Base										
6,700.00	67.92	120.00	6,514.65	-223.51	387.13	437.31	8.00	8.00	0.00	0.00
6,800.00	75.92	120.00	6,545.65	-271.00	469.39	530.24	8.00	8.00	0.00	0.00
6,828.35	78.19	120.00	6,552.00	-284.82	493.32	557.27	8.00	8.00	0.00	0.00
Niobrara B										
6,838.46	79.00	120.00	6,554.00	-289.77	501.90	566.96	8.00	8.00	0.00	0.00
End Build at 6838.46ft - 7" Casing Pt.										
6,865.00	79.00	120.00	6,559.06	-302.80	524.46	592.45	0.00	0.00	0.00	0.00
Hold Angle at 79.00°										
6,895.26	79.00	120.00	6,564.84	-317.65	550.18	621.51	0.00	0.00	0.00	0.00
Kickoff at 6895.26ft										
6,900.00	79.38	120.00	6,565.73	-319.98	554.22	626.06	8.00	8.00	0.00	0.00
6,925.64	81.43	120.00	6,570.00	-332.62	576.11	650.80	8.00	8.00	0.00	0.00
Nio B Tgt top										
6,960.00	84.18	120.00	6,574.30	-349.66	605.63	684.14	8.00	8.00	0.00	0.00
Build Rate = 8.00°/100ft										
7,000.00	87.38	120.00	6,577.25	-369.60	640.17	723.16	8.00	8.00	0.00	0.00
7,032.76	90.00	120.00	6,578.00	-385.98	668.53	755.20	8.00	8.00	0.00	0.00
End Build / Begin Turn at 7032.76ft - Nio B Target										
7,100.00	90.04	122.69	6,577.97	-420.95	725.95	821.28	4.00	0.06	4.00	89.12
7,200.00	90.10	126.69	6,577.84	-477.85	808.16	920.46	4.00	0.06	4.00	89.12
Turn Rate = 4.00°/100ft										
7,300.00	90.16	130.69	6,577.61	-540.35	886.20	1,020.28	4.00	0.06	4.00	89.12
7,369.48	90.21	133.47	6,577.39	-586.90	937.77	1,089.75	4.00	0.06	4.00	89.13
End Turn at 7369.48ft										
7,396.48	90.22	134.55	6,577.29	-605.66	957.19	1,116.73	4.00	0.06	4.00	89.14
7,400.00	90.22	134.55	6,577.27	-608.13	959.69	1,120.25	0.00	0.00	0.00	0.00
7,500.00	90.22	134.55	6,576.88	-678.28	1,030.96	1,220.14	0.00	0.00	0.00	0.00
7,600.00	90.22	134.55	6,576.50	-748.43	1,102.23	1,320.04	0.00	0.00	0.00	0.00
7,700.00	90.22	134.55	6,576.11	-818.58	1,173.49	1,419.94	0.00	0.00	0.00	0.00
7,800.00	90.22	134.55	6,575.72	-888.73	1,244.76	1,519.84	0.00	0.00	0.00	0.00
7,900.00	90.22	134.55	6,575.33	-958.88	1,316.03	1,619.73	0.00	0.00	0.00	0.00
8,000.00	90.22	134.55	6,574.94	-1,029.03	1,387.29	1,719.63	0.00	0.00	0.00	0.00
8,100.00	90.22	134.55	6,574.56	-1,099.17	1,458.56	1,819.53	0.00	0.00	0.00	0.00
8,200.00	90.22	134.55	6,574.17	-1,169.32	1,529.83	1,919.42	0.00	0.00	0.00	0.00
8,300.00	90.22	134.55	6,573.78	-1,239.47	1,601.09	2,019.32	0.00	0.00	0.00	0.00
8,400.00	90.22	134.55	6,573.39	-1,309.62	1,672.36	2,119.22	0.00	0.00	0.00	0.00
8,500.00	90.22	134.55	6,573.01	-1,379.77	1,743.63	2,219.12	0.00	0.00	0.00	0.00
8,600.00	90.22	134.55	6,572.62	-1,449.92	1,814.90	2,319.01	0.00	0.00	0.00	0.00
8,700.00	90.22	134.55	6,572.23	-1,520.07	1,886.16	2,418.91	0.00	0.00	0.00	0.00
8,800.00	90.22	134.55	6,571.84	-1,590.22	1,957.43	2,518.81	0.00	0.00	0.00	0.00

Plan Report for Lucci B01-99HZ - Plan #1 Proposal

Measured Depth (ft)	Inclination (°)	Azimuth (°)	Vertical Depth (ft)	+N/-S (ft)	+E/-W (ft)	Vertical Section (ft)	Dogleg Rate (°/100ft)	Build Rate (°/100ft)	Turn Rate (°/100ft)	Toolface Azimuth (°)
8,900.00	90.22	134.55	6,571.45	-1,660.37	2,028.70	2,618.71	0.00	0.00	0.00	0.00
9,000.00	90.22	134.55	6,571.07	-1,730.52	2,099.96	2,718.60	0.00	0.00	0.00	0.00
9,100.00	90.22	134.55	6,570.68	-1,800.67	2,171.23	2,818.50	0.00	0.00	0.00	0.00
9,200.00	90.22	134.55	6,570.29	-1,870.81	2,242.50	2,918.40	0.00	0.00	0.00	0.00
9,300.00	90.22	134.55	6,569.90	-1,940.96	2,313.76	3,018.29	0.00	0.00	0.00	0.00
9,400.00	90.22	134.55	6,569.51	-2,011.11	2,385.03	3,118.19	0.00	0.00	0.00	0.00
9,500.00	90.22	134.55	6,569.13	-2,081.26	2,456.30	3,218.09	0.00	0.00	0.00	0.00
Hold Angle at 90.22°										
9,600.00	90.22	134.55	6,568.74	-2,151.41	2,527.56	3,317.99	0.00	0.00	0.00	0.00
9,700.00	90.22	134.55	6,568.35	-2,221.56	2,598.83	3,417.88	0.00	0.00	0.00	0.00
9,800.00	90.22	134.55	6,567.96	-2,291.71	2,670.10	3,517.78	0.00	0.00	0.00	0.00
9,900.00	90.22	134.55	6,567.57	-2,361.86	2,741.36	3,617.68	0.00	0.00	0.00	0.00
10,000.00	90.22	134.55	6,567.19	-2,432.01	2,812.63	3,717.57	0.00	0.00	0.00	0.00
10,100.00	90.22	134.55	6,566.80	-2,502.16	2,883.90	3,817.47	0.00	0.00	0.00	0.00
10,200.00	90.22	134.55	6,566.41	-2,572.31	2,955.16	3,917.37	0.00	0.00	0.00	0.00
10,300.00	90.22	134.55	6,566.02	-2,642.45	3,026.43	4,017.27	0.00	0.00	0.00	0.00
10,400.00	90.22	134.55	6,565.63	-2,712.60	3,097.70	4,117.16	0.00	0.00	0.00	0.00
10,500.00	90.22	134.55	6,565.25	-2,782.75	3,168.96	4,217.06	0.00	0.00	0.00	0.00
10,600.00	90.22	134.55	6,564.86	-2,852.90	3,240.23	4,316.96	0.00	0.00	0.00	0.00
10,700.00	90.22	134.55	6,564.47	-2,923.05	3,311.50	4,416.86	0.00	0.00	0.00	0.00
10,800.00	90.22	134.55	6,564.08	-2,993.20	3,382.76	4,516.75	0.00	0.00	0.00	0.00
10,900.00	90.22	134.55	6,563.69	-3,063.35	3,454.03	4,616.65	0.00	0.00	0.00	0.00
11,000.00	90.22	134.55	6,563.31	-3,133.50	3,525.30	4,716.55	0.00	0.00	0.00	0.00
11,100.00	90.22	134.55	6,562.92	-3,203.65	3,596.56	4,816.44	0.00	0.00	0.00	0.00
11,200.00	90.22	134.55	6,562.53	-3,273.80	3,667.83	4,916.34	0.00	0.00	0.00	0.00
11,300.00	90.22	134.55	6,562.14	-3,343.95	3,739.10	5,016.24	0.00	0.00	0.00	0.00
11,400.00	90.22	134.55	6,561.76	-3,414.09	3,810.37	5,116.14	0.00	0.00	0.00	0.00
11,500.00	90.22	134.55	6,561.37	-3,484.24	3,881.63	5,216.03	0.00	0.00	0.00	0.00
11,594.66	90.22	134.55	6,561.00	-3,550.64	3,949.09	5,310.59	0.00	0.00	0.00	0.00
Lucci B01-99HZ Plan #1 BH Tgt										

Plan Annotations

Measured Depth (ft)	Vertical Depth (ft)	Local Coordinates +N/-S (ft)	+E/-W (ft)	Comment
5,850.96	5,850.96	0.00	0.00	Kickoff at 5850.96ft
6,325.00	6,291.14	-75.62	130.97	Build Rate = 8.00°/100ft
6,838.46	6,554.00	-289.77	501.90	End Build at 6838.46ft
6,865.00	6,559.06	-302.80	524.46	Hold Angle at 79.00°
6,895.26	6,564.84	-317.65	550.18	Kickoff at 6895.26ft
6,960.00	6,574.30	-349.66	605.63	Build Rate = 8.00°/100ft
7,032.76	6,578.00	-385.98	668.53	End Build / Begin Turn at 7032.76ft
7,200.00	6,577.84	-477.85	808.16	Turn Rate = 4.00°/100ft
7,369.48	6,577.39	-586.90	937.77	End Turn at 7369.48ft
9,500.00	6,569.13	-2,081.26	2,456.30	Hold Angle at 90.22°
11,594.66	6,561.00	-3,550.65	3,949.09	Total Depth = 11594.66ft

Vertical Section Information

Angle Type	Target	Azimuth (°)	Origin Type	Origin +N/_S (ft)	+E/-W (ft)	Start TVD (ft)
Target	Lucci B01-99HZ Plan #1 BH Tgt	131.96	Slot	0.00	0.00	0.00

Plan Report for Lucci B01-99HZ - Plan #1 Proposal

Survey tool program

From (ft)	To (ft)	Survey/Plan	Survey Tool
0.00	11,594.62	Plan #1 Proposal	MWD

Casing Details

Measured Depth (ft)	Vertical Depth (ft)	Name	Casing Diameter (")	Hole Diameter (")
6,838.46	6,554.00	7" Casing Pt.	7	8-3/4

Formation Details

Measured Depth (ft)	Vertical Depth (ft)	Name	Lithology	Dip (°)	Dip Direction (°)
	6,585.00	Nio B Tgt Base		0.00	
6,537.36	6,437.00	Niobrara		0.00	
6,573.46	6,457.00	Niobrara A		0.00	
6,618.94	6,480.00	Niobrara A Base		0.00	
6,828.35	6,552.00	Niobrara B		0.00	
6,925.64	6,570.00	Nio B Tgt top		0.00	
7,032.76	6,578.00	Nio B Target		0.00	

Targets associated with this wellbore

Target Name	TVD (ft)	+N/-S (ft)	+E/-W (ft)	Shape
Lucci BC B1-21	4,610.00	-2,254.66	1,915.42	Circle
Lucci BC B1-22	4,606.00	-2,240.31	3,299.09	Circle
Lucci B01-99HZ N. Section Line	0.00	0.00	0.00	Polygon
Lucci BC B1-3	4,620.00	-254.62	1,338.18	Circle
Lucci BC B1-16	4,623.00	-4,206.41	3,956.16	Circle
Lucci BC B1-6	4,611.00	-1,610.96	1,323.78	Circle
Lucci B01-99HZ S. Section Line	0.00	0.00	0.00	Polygon
Lucci B01-99HZ S. 460' Setback	0.00	0.00	0.00	Polygon
Lucci BC B1-7	4,609.00	-1,592.28	2,606.07	Circle
Lucci BC B1-10	4,606.00	-2,689.60	2,450.56	Circle
Lucci BC B1-23	4,601.00	-3,549.65	3,269.19	Circle
Lucci BC B1-18	4,622.00	-934.02	1,979.63	Circle
Lucci B01-99HZ W. Section Line	0.00	0.00	0.00	Polygon
Lucci B01-99HZ Plan #1 BH Tgt	6,561.00	-3,550.64	3,949.09	Point
Lucci BC B1-4	4,613.00	-296.19	16.42	Circle
Lucci B01-99HZ N. 460' Setback	0.00	0.00	0.00	Polygon
Lucci BC B1-19	4,614.00	-890.01	565.41	Circle
Lucci B01-99HZ E. Section Line	0.00	0.00	0.00	Polygon
Lucci B01-99HZ E. 460' Setback	0.00	0.00	0.00	Polygon
Lucci BC B1-9	4,610.00	-2,840.22	4,056.72	Circle
Lucci B01-99HZ W. 460' Setback	0.00	0.00	0.00	Polygon

North Reference Sheet for Sec. 1-T5N-R64W - Lucci B01-99HZ - Plan #1

All data is in US Feet unless otherwise stated. Directions and Coordinates are relative to True North Reference.

Vertical Depths are relative to RKB 13' @ 4625.00ft (Original Well Elev). Northing and Easting are relative to Lucci B01-99HZ

Coordinate System is US State Plane 1983, Colorado Northern Zone using datum North American Datum 1983, ellipsoid GRS 1980

Projection method is Lambert Conformal Conic (2 parallel)

Central Meridian is -105.50°, Longitude Origin:0° 0' 0.000 E°, Latitude Origin:40° 47' 0.000 N°

False Easting: 3,000,000.00ft, False Northing: 1,000,000.00ft, Scale Reduction: 0.99996198

Grid Coordinates of Well: 1,402,731.86 ft N, 3,276,879.10 ft E

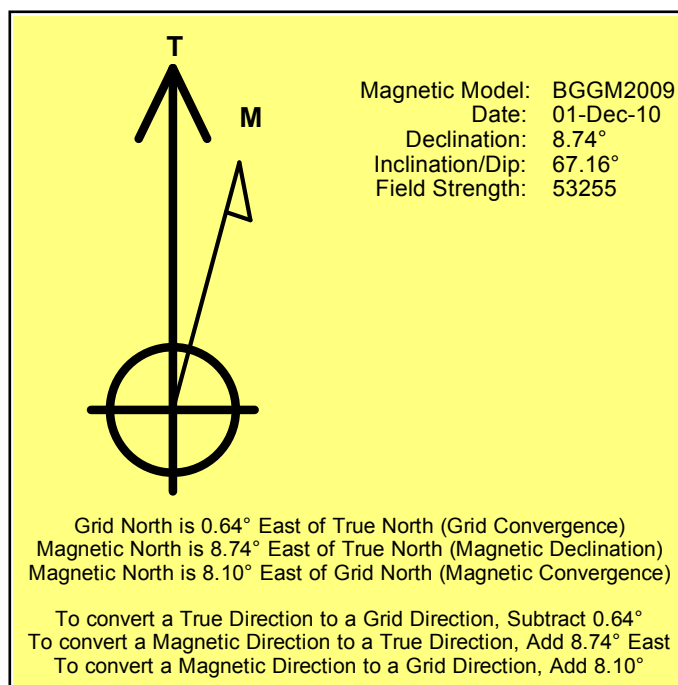
Geographical Coordinates of Well: 40° 26' 04.70" N, 104° 30' 19.18" W

Grid Convergence at Surface is: 0.64°

Based upon Minimum Curvature type calculations, at a Measured Depth of 11,594.66ft

the Bottom Hole Displacement is 5,310.59ft in the Direction of 131.96° (True).

Magnetic Convergence at surface is: -8.10° (1 December 2010, , BGGM2009)



Project: Weld County, CO
Site: Sec. 1-T5N-R64W
Well: Lucci B01-99HZ
Wellbore: Plan #1
Design: Plan #1 Proposal

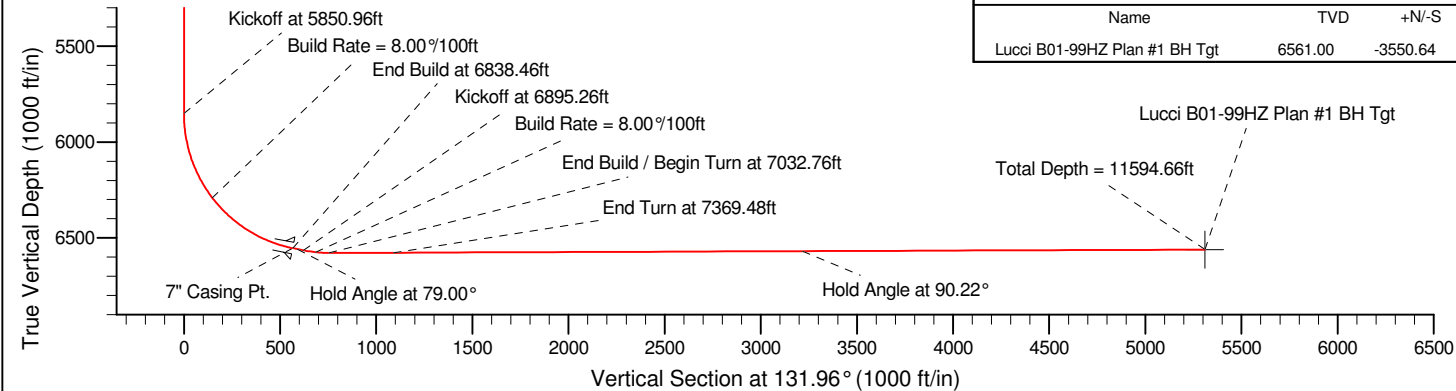
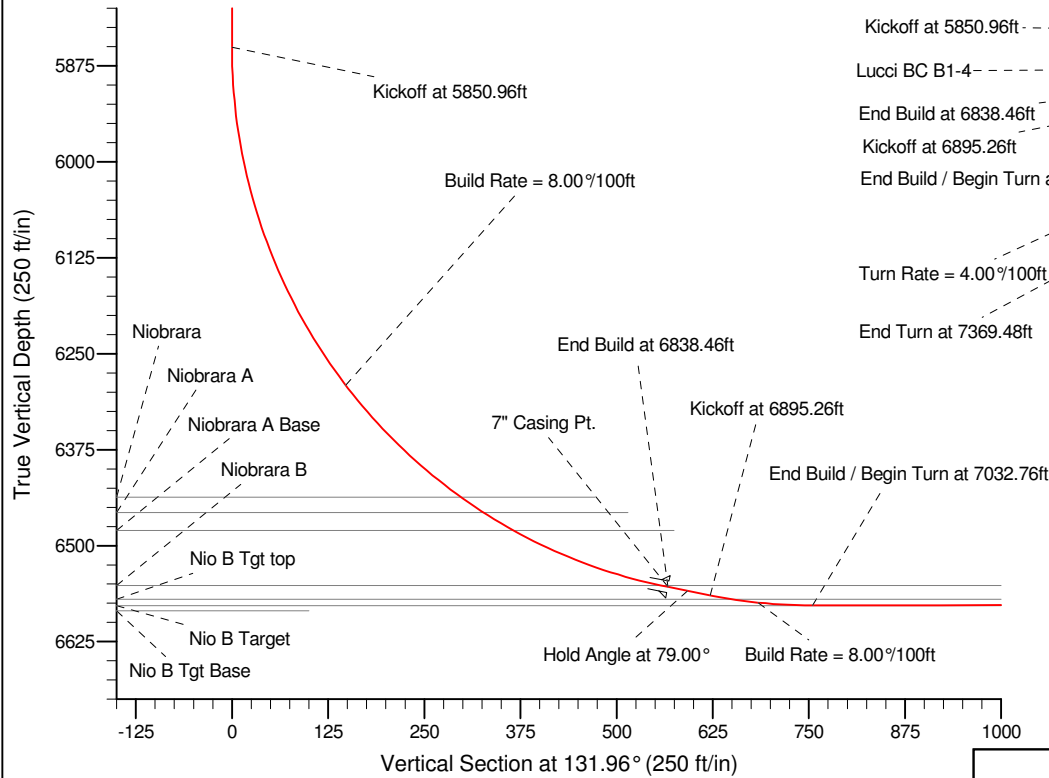
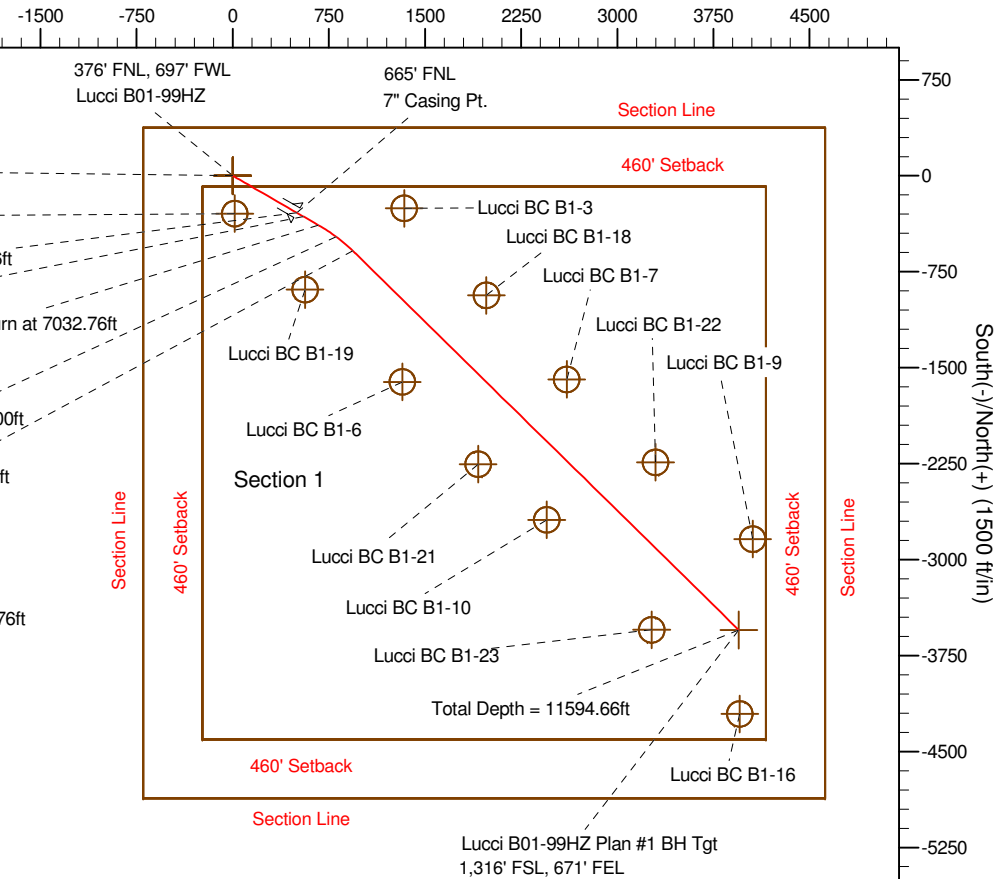
Noble Energy

HALLIBURTON
Sperry Drilling

SECTION DETAILS

Sec	MD	Inc	Azi	TVD	+N/-S	+E/-W	DLeg	TFace	VSec	Target
1	0.00	0.00	0.00	0.00	0.00	0.00	0.00	0.00	0.00	
2	5850.96	0.00	0.00	5850.96	0.00	0.00	0.00	0.00	0.00	
3	6838.46	79.00	120.00	6554.00	-289.77	501.90	8.00	120.00	566.96	
4	6895.26	79.00	120.00	6564.84	-317.65	550.18	0.00	0.00	621.51	
5	7032.76	90.00	120.00	6578.00	-385.98	668.53	8.00	0.00	755.20	
6	7396.48	90.22	134.55	6577.29	-605.66	957.19	4.00	89.12	1116.73	
7	11594.66	90.22	134.55	6561.00	-3550.64	3949.09	0.00	0.00	5310.59	Lucci B01-99HZ Plan #1 BH Tgt

West(-)/East(+) (1500 ft/in)



WELLBORE TARGET DETAILS (LAT/LONG)

Name	TVD	+N/-S	+E/-W	Latitude	Longitude	Shape
Lucci B01-99HZ Plan #1 BH Tgt	6561.00	-3550.64	3949.09	40° 25' 29.608 N	104° 29' 28.118 W	Point

WELL DETAILS: Lucci B01-99HZ

Ground Level:		4612.00	
Northing	Easting	Latitude	Longitude
1402731.86	3276879.10	40° 26' 4.697 N	104° 30' 19.181 W

Plan: Plan #1 Proposal (Lucci B01-99HZ/Plan #1)

Created By: Paul A. Bitzan	Date: 01/29/2010
Checked: _____	Date: _____
Reviewed: _____	Date: _____
Approved: _____	Date: _____