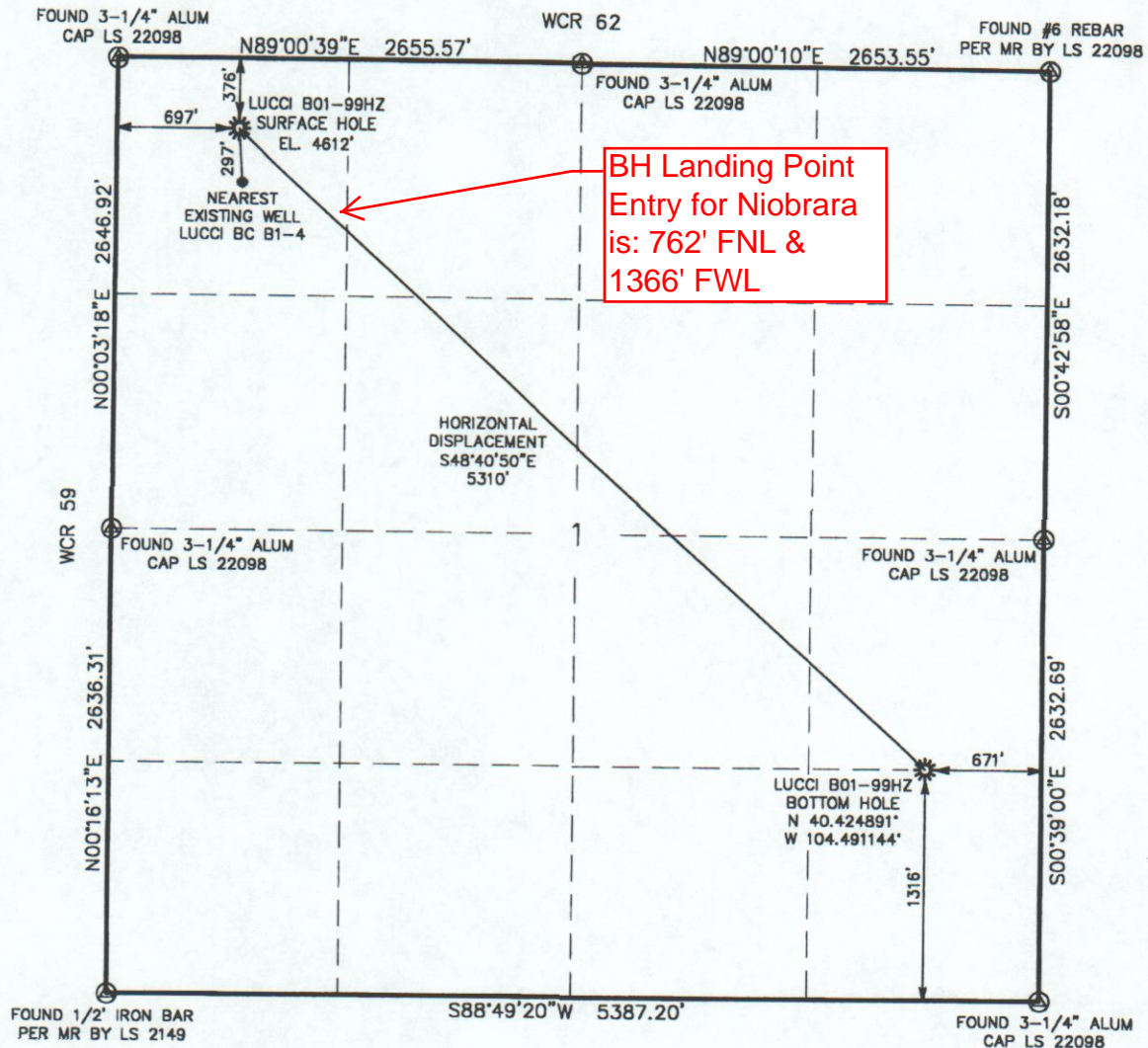


Atlas Surveying Company 5082 East Hampden Avenue #325 Denver, Colorado 80222
WELL LOCATION CERTIFICATE
 THIS MAP DOES NOT REPRESENT A BOUNDARY SURVEY

LUCCI B01-99HZ

SECTION 1
 TOWNSHIP 5 NORTH
 RANGE 64 WEST



0 1000
 Scale 1" = 1000 ft

IN ACCORDANCE WITH A REQUEST FROM ERIK VAN DECAR - NOBLE ENERGY PRODUCTION, ATLAS SURVEYING COMPANY, INC. HAS DETERMINED THE LOCATION OF THE LUCCI B01-99HZ SURFACE HOLE TO BE 376' FNL, 697' FWL, AS MEASURED AT NINETY (90) DEGREES FROM THE SECTION LINES, SECTION 1, TOWNSHIP 5 NORTH, RANGE 64 WEST, 6TH PRINCIPLE MERIDIAN, WELD COUNTY, COLORADO.

I HEREBY CERTIFY THAT THIS WELL LOCATION CERTIFICATE WAS PREPARED BY ME, OR UNDER MY DIRECT SUPERVISION ON 08/18/2009, FOR AND ON BEHALF OF NOBLE ENERGY PRODUCTION, THAT IT IS NOT A LAND SURVEY PLAT OR AN IMPROVEMENT SURVEY PLAT, AND THAT IT IS NOT TO BE RELIED UPON FOR ESTABLISHMENT OF FENCE, BUILDING, OR OTHER FUTURE IMPROVEMENT LINES.

NOTES:

- 1) BASIS OF BEARINGS FOR THIS MAP ARE BASED UPON GPS OBSERVATIONS MADE ON 03/30/2008 BETWEEN MONUMENTS LOCATED AT THE SOUTHEAST SECTION CORNER AND THE EAST QUARTER CORNER OF SAID SECTION AND WITH ALL BEARINGS SHOWN HEREON RELATIVE THERETO.
- 2) ELEVATIONS ARE BASED UPON THE AVERAGE OF SPOT ELEVATIONS DEPICTED ON THE U.S.G.S. 7.5 MINUTE QUADRANGLE MAP OF THE SECTION SHOWN HEREON.
- 3) SEE VISIBLE IMPROVEMENTS PAGE FOR ALL IMPROVEMENTS WITHIN 400' OF THE LOCATION.
- 4) SEE HYDROLOGY PAGE FOR ALL WATER FEATURES WITHIN 1000' OF THE LOCATION.
- 5) THE LOCATION FALLS IN AN OPEN FIELD.

LATITUDE & LONGITUDE (NAD 83 SURFACE HOLE):
 LATITUDE: N 40.434638°
 LONGITUDE: W 104.505328°
 POOP: 2.35
 1/4, 1/4: NW/NW
 NEAREST PROPERTY LINE: 376'

LEGEND

- (A) - FOUND SURVEY MONUMENT PER MONUMENT RECORD EXCEPTIONS NOTED.
- (C) - CALCULATED DIMENSION

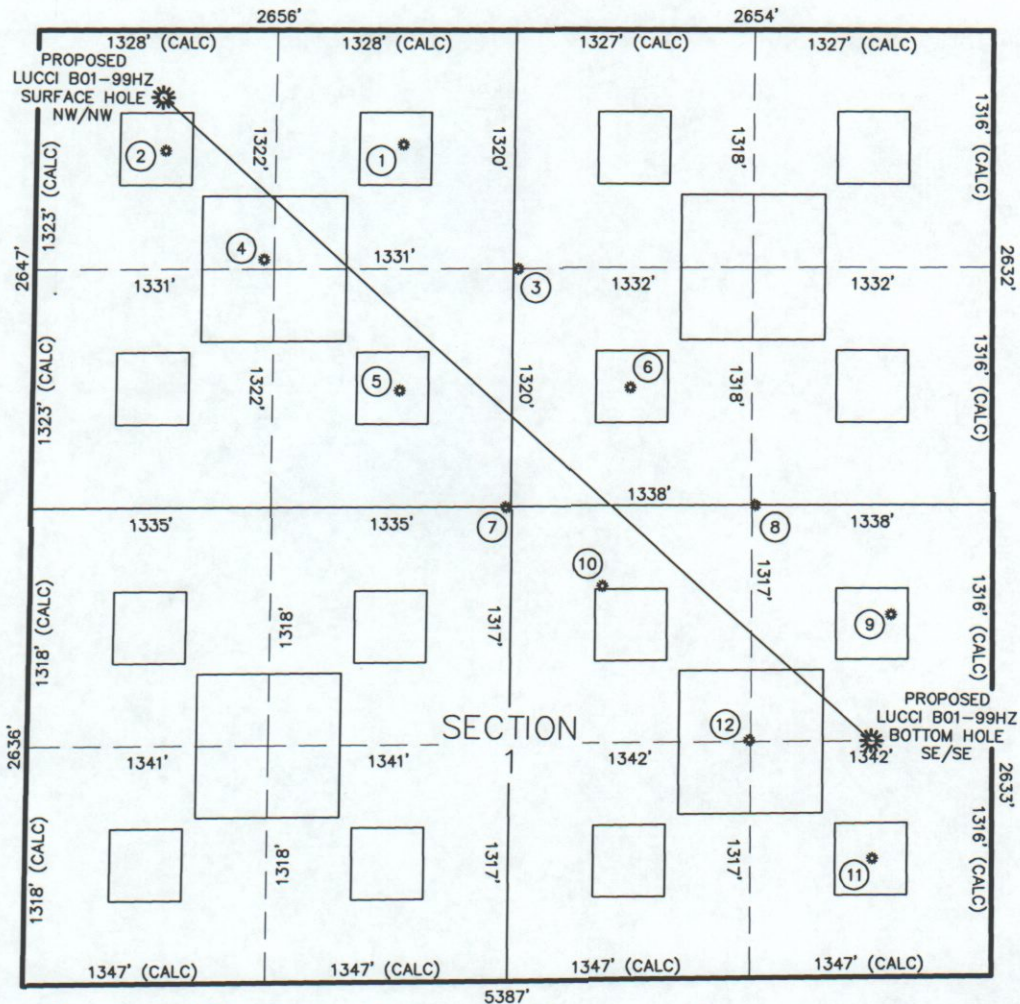


Michael Feigenbaum
 Professional Land Surveyor Registration No. 29035
 State of Colorado
 JOB #: NOB-09025

NOTICE: According to Colorado law you MUST commence any legal action based upon any defect in this W.L.C. within three years after you first discover such defect. In no event may any action based upon any defect in this W.L.C. be commenced more than ten years from this said date of the certification shown hereon.

SITE SKETCH — LUCCI B01-99HZ

SECTION 1
TOWNSHIP 5 NORTH
RANGE 64 WEST



- | | | | | | | | |
|---|--|---|---|--|--|--|--|
| <p>① LUCCI BC B1-3 NE/NW
638' FNL
2038' FWL
EL. 4620'
N 40.433939°
W 104.500521°
PDOP: 1.93</p> | <p>② LUCCI BC B1-4 NW/NW
672' FNL
717' FWL
EL. 4613'
N 40.433825°
W 104.505269°
PDOP: 2.50</p> | <p>③ LUCCI B1-18 SW/NE
1322' FNL
2639' FEL
EL. 4622'
N 40.432074°
W 104.498217°
PDOP: 3.35</p> | <p>④ LUCCI 1-19 NW/NW
1269' FNL
1273' FWL
EL. 4614'
N 40.432195°
W 104.503297°
PDOP: 1.93</p> | <p>⑤ LUCCI BC B1-6 SE/NW
1995' FNL
2040' FWL
EL. 4611'
N 40.430216°
W 104.500573°
PDOP: 3.22</p> | <p>⑥ LUCCI BC B1-7 SW/NE
1984' FNL
2013' FEL
EL. 4609'
N 40.430267°
W 104.495967°
PDOP: 1.82</p> | <p>⑦ LUCCI B1-21 NE/SW
2631' FSL
2040' FWL
EL. 4610'
N 40.428449°
W 104.498448°
PDOP: 1.65</p> | <p>⑧ LUCCI B1-22 NE/SE
2633' FSL
1321' FEL
EL. 4606'
N 40.428488°
W 104.493478°
PDOP: 1.67</p> |
| | | <p>⑨ LUCCI BC B1-9 NE/SE
2026' FSL
563' FEL
EL. 4610'
N 40.426841°
W 104.490757°
PDOP: 1.97</p> | <p>⑩ LUCCI BC B1-10 NW/SE
2191' FSL
2169' FEL
EL. 4606'
N 40.427255°
W 104.496526°
PDOP: 2.68</p> | <p>⑪ LUCCI BC B1-16 SE/SE
661' FSL
664' FEL
EL. 4623'
N 40.423091°
W 104.491119°
PDOP: 1.70</p> | <p>⑫ LUCCI B1-23 NW/SE
1324' FSL
1351' FEL
EL. 4601'
N 40.424894°
W 104.493586°
PDOP: 1.90</p> | | |

NOTES:

- THIS SKETCH DOES NOT REPRESENT A BOUNDARY SURVEY.
- THE DATUM FOR THE LATITUDES AND LONGITUDES ON THIS SKETCH IS NAD83.

