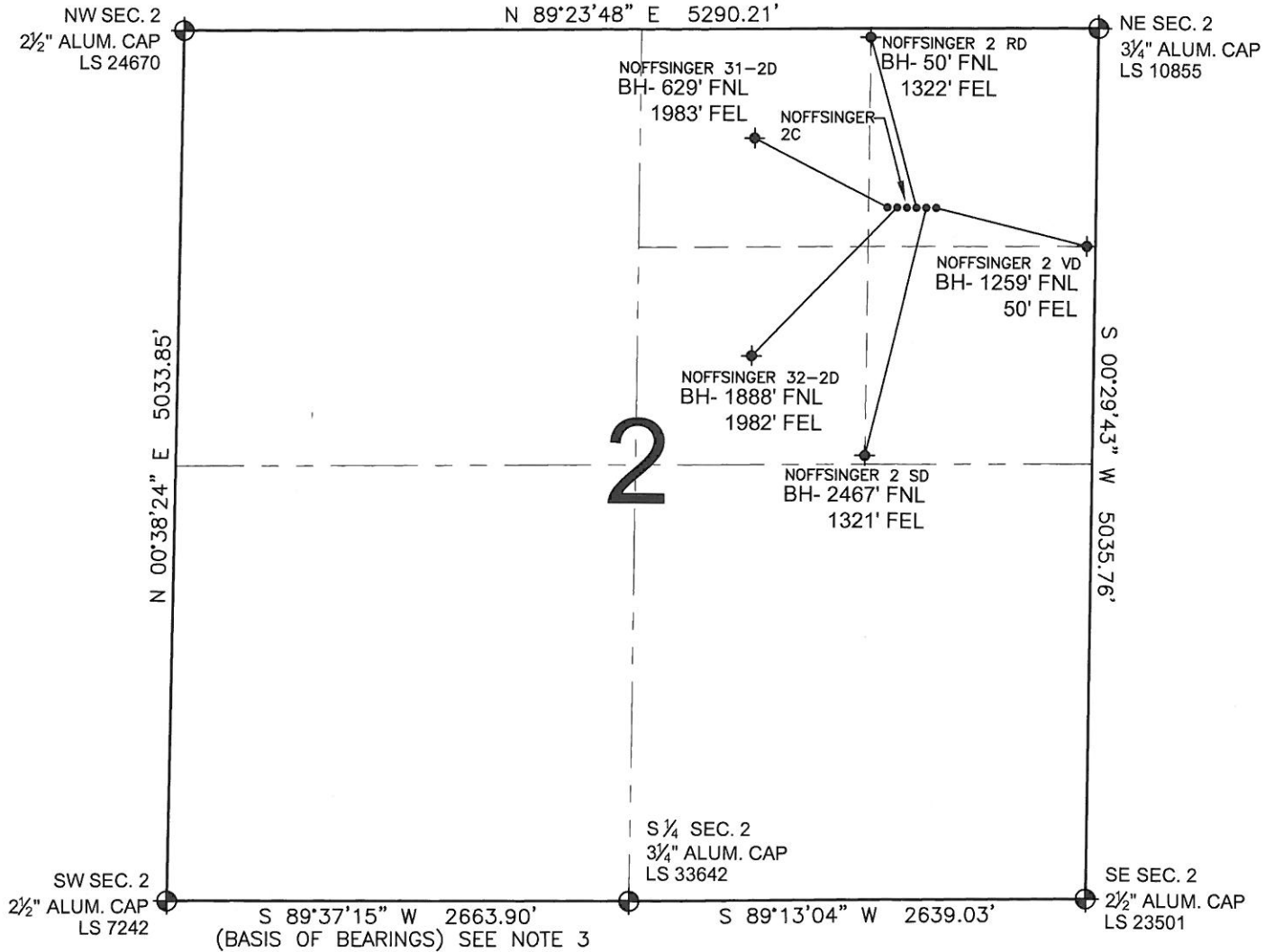


PAD DRAWING - NOFFSINGER

SECTION 2, TOWNSHIP 5 NORTH, RANGE 65 WEST, 6TH P.M.



LEGEND

- = EXISTING MONUMENT
 = BOTTOM HOLE
 BH= BOTTOM HOLE
 = PROPOSED WELL
 = EXISTING WELL

NOTES:

- THIS SURVEY WAS DONE BY GPS METHODS AND CONFORMS TO THE MINIMUM STANDARDS SET BY THE C.O.G.C.C., RULE NO. 215
- ELEVATIONS SHOWN AT THE WELL HEAD, AS WELL AS HORIZONTAL CONTROL, ARE BASED ON GPS-RTK VALUES DERIVED FROM DOING 2-HOUR STATIC GPS SESSIONS AND REDUCTIONS USING O.P.U.S. SOLUTIONS.
VERTICAL = NAVD88; HORIZONTAL = NAD83/92
- THE BEARINGS SHOWN HEREON ARE BASED ON GPS OBSERVATIONS BETWEEN THE MONUMENTS SHOWN HEREON AS FOUND ON THE FIELD DATE BELOW.
- DISTANCES SHOWN ARE AT GROUND LEVEL, AS MEASURED IN THE FIELD, WITH TIES TO WELLS MEASURED AT A PERPENDICULAR TO SECTION LINES.

NOTES:

- NOFFSINGER 2VD TO BE AT 1034' FNL, 1060' FEL.
 BOTTOM HOLE AT 1259' FNL & 50' FEL.
 NOFFSINGER 2SD TO BE AT 1034' FNL, 1082' FEL.
 BOTTOM HOLE AT 2467' FNL & 1321' FEL.
 NOFFSINGER 2RD TO BE AT 1033' FNL, 1104' FEL.
 BOTTOM HOLE AT 50' FNL & 1322' FEL.
 NOFFSINGER 2C TO BE AT 1033' FNL, 1126' FEL.
 NOFFSINGER 32-2D TO BE AT 1033' FNL, 1148' FEL.
 BOTTOM HOLE AT 1888' FNL & 1982' FEL.
 NOFFSINGER 31-2D TO BE AT 1033' FNL, 1170' FEL.
 BOTTOM HOLE AT 629' FNL & 1983' FEL.



0 500 1000

SCALE: 1"=1000'

REVISIONS

INITIAL	DATE
SMF	06-10-10

PREPARED BY:

PFS

Petroleum Field Services, LLC
1801 W. 13th Ave.
Denver, CO 80204



PETROLEUM DEVELOPMENT CORPORATION

FIELD DATE:
05-03-10

DRAWING DATE:
05-13-10

BY:
SMF

PAD NAME:
NOFFSINGER

SURFACE LOCATION:

WELD COUNTY, COLORADO
NE 1/4 NE 1/4, SEC. 2, T5N, R65W