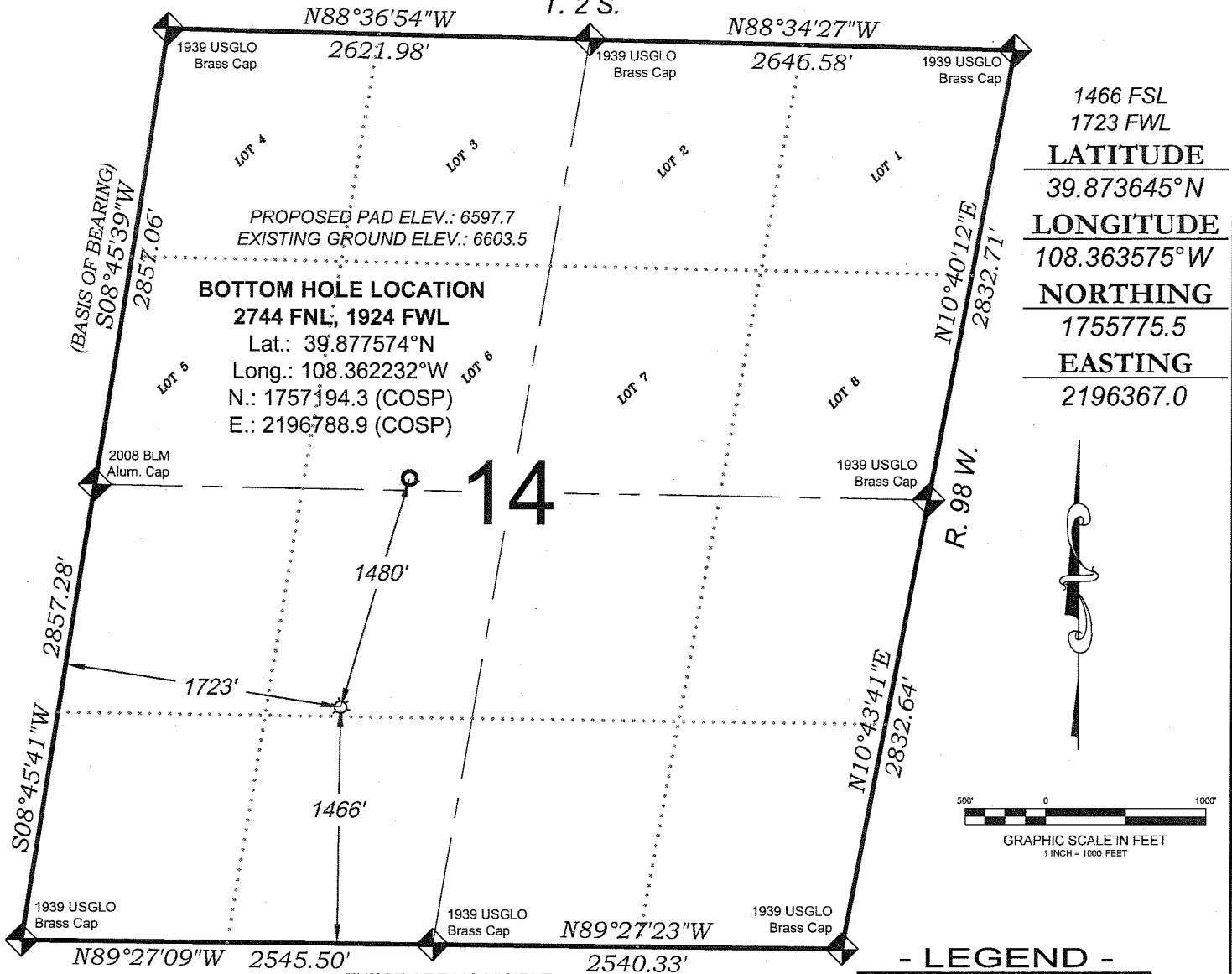


# Federal RG 622-14-298

T. 2 S.



1466 FSL  
1723 FWL

**LATITUDE**  
39.873645°N  
**LONGITUDE**  
108.363575°W  
**NORTHING**  
1755775.5  
**EASTING**  
2196367.0



## - LEGEND -

- FIELD LOCATED SECTION MONUMENTS AS DESCRIBED
- FIELD SURVEYED WELL LOCATION
- CALCULATED BOTTOM HOLE LOCATION
- CALCULATED SECTION CORNER LOCATION

## NOTES

- 1) ELEVATIONS BASED ON N.A. V.D. 1988 PUBLISHED COORDINATES.
- 2) LATITUDES AND LONGITUDES ARE BASE ON NAD 83, PUBLISHED COORDINATES
- 3) STATE PLANE COORDINATES ARE BASED ON COLORADO CENTRAL ZONE, U.S. SURVEY FEET.
- 4) ELEVATION MASK SET TO 15"
- 5) GPS OPERATOR J. KIRKPATRICK, OBSERVED A PDOP OF 1.78 FOR SURVEY POINT NUMBER 4000.
- 6) SURFACE AND BOTTOM HOLE LOCATIONS ARE MEASURED 90° FROM SECTION LINES.

**WELL LOCATION PLAT Prepared for:**  
**Williams** Williams Production, RMT  
NE1/4 SW1/4, SECTION 14  
T. 2 S., R. 98 W. of the 6th. P.M.  
Rio BLANCO COUNTY, COLORADO

## SURVEYORS STATEMENT

I, MICHAEL J. LANGHORNE, A REGISTERED LAND SURVEYOR IN THE STATE OF COLORADO DO HEREBY CERTIFY THAT THE SURVEY SHOWN HEREON WAS PREPARED UNDER MY DIRECT SUPERVISION AND HAS BEEN STAKED ON THE GROUND AS SHOWN ON THE PLAT AND CHECKING THAT THIS MAP IS A TRUE REPRESENTATION THEREOF.

*Michael Langhorne*

MICHAEL J. LANGHORNE, COLORADO REGISTRATION NO. 36572  
FOR AND ON BEHALF OF  
BOOKCLIFF SURVEY SERVICES, INC.

## REFERENCES

- 1) CORRECTIVE DEPENDENT RESURVEY T. 2 S., R. 98 W., 6 th. P.M (GLO PLAT)
- 2) U.S.G.S. QUAD: Rock School and Square S Ranch, CO

155 East Third Street  
Rifle, Colorado 81650  
Ph. (970) 625-1340  
Fax (970) 625-2773



**BOOKCLIFF**  
Survey Services, Inc.

SURVEY DATE: 3/26/10  
MAP DATE: 3/31/10  
SCALE: 1" = 1000'  
PLAT: 1 of 1  
PROJECT: Williams