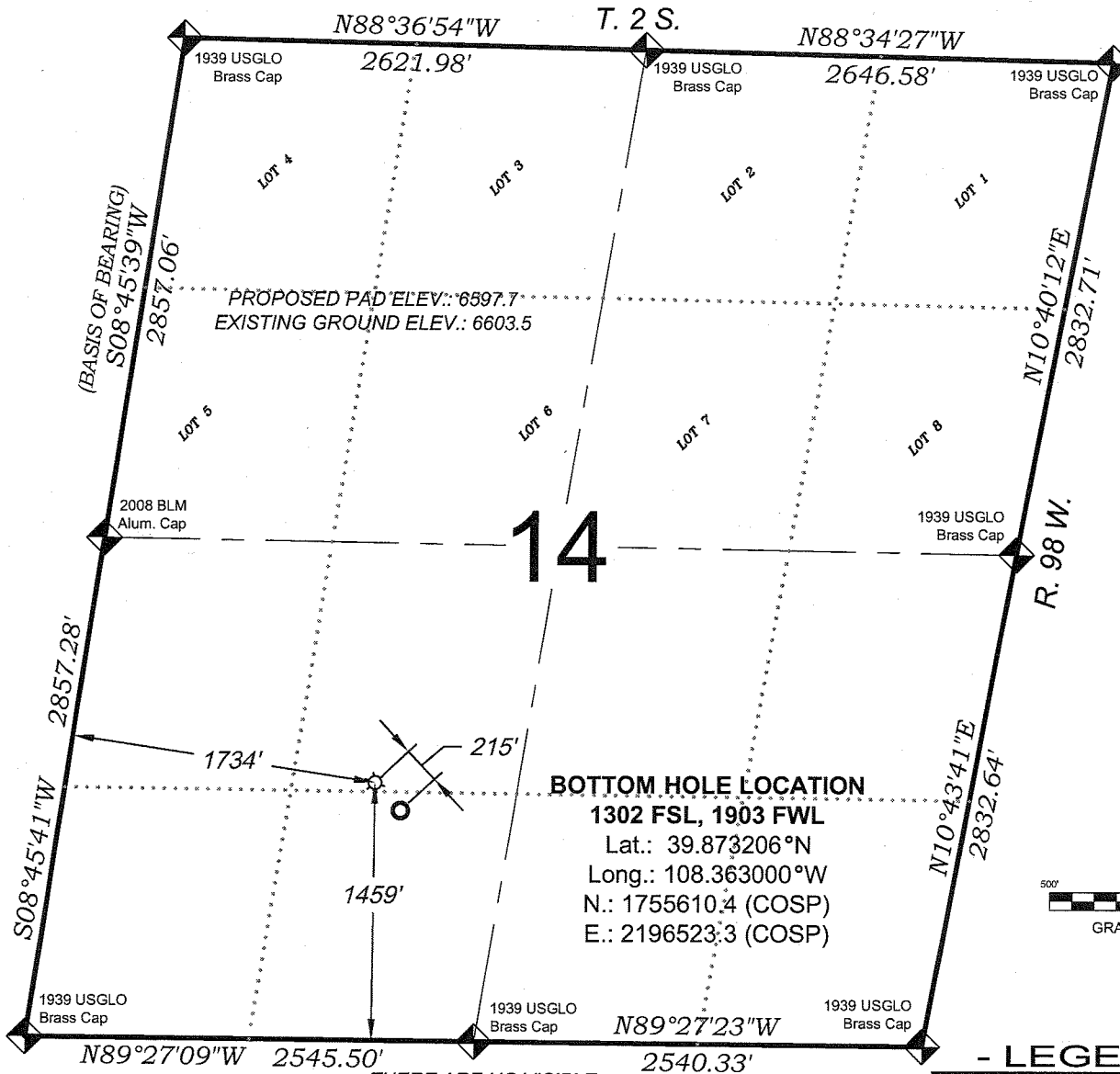
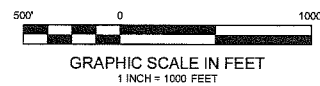


Federal RG 324-14-298



1459 FSL
1734 FWL
LATITUDE
39.873626°N
LONGITUDE
108.363538°W
NORTHING
1755768.2
EASTING
2196377.1



- LEGEND -

- FIELD LOCATED SECTION MONUMENTS AS DESCRIBED
- FIELD SURVEYED WELL LOCATION
- CALCULATED BOTTOM HOLE LOCATION
- CALCULATED SECTION CORNER LOCATION

SURVEYORS STATEMENT

I, MICHAEL J. LANGHORNE, A REGISTERED LAND SURVEYOR IN THE STATE OF COLORADO DO HEREBY CERTIFY THAT THE SURVEY SHOWN HEREON WAS PREPARED UNDER MY DIRECT SUPERVISION AND HAS BEEN STAKED ON THE GROUND AS SHOWN ON THE PLAT AND CHECKING THAT THIS MAP IS A TRUE REPRESENTATION THEREOF.

Michael Langhorne

MICHAEL J. LANGHORNE, COLORADO REGISTRATION NO. 36572
FOR AND ON BEHALF OF
BOOKCLIFF SURVEY SERVICES, INC.

NOTES

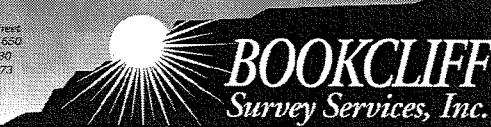
- ELEVATIONS BASED ON N.A.V.D. 1988 PUBLISHED COORDINATES.
- LATITUDES AND LONGITUDES ARE BASE ON NAD 83, PUBLISHED COORDINATES
- STATE PLANE COORDINATES ARE BASED ON COLORADO CENTRAL ZONE, U.S. SURVEY FEET.
- ELEVATION MASK SET TO 15"
- GPS OPERATOR J. KIRKPATRICK, OBSERVED A PDOP OF 1.78 FOR SURVEY POINT NUMBER 4000.
- SURFACE AND BOTTOM HOLE LOCATIONS ARE MEASURED 90° FROM SECTION LINES.

WELL LOCATION PLAT Prepared for:
Williams Williams Production, RMT
NE1/4 SW1/4, SECTION 14
T. 2 S., R. 98 W. of the 6th. P.M.
Rio BLANCO COUNTY, COLORADO

- CORRECTIVE DEPENDENT RESURVEY T. 2 S., R. 98 W., 6 th P.M (GLO PLAT)
- U.S.G.S. QUAD: Rock School and Square S Ranch, CO

SURVEY DATE: 3/26/10
MAP DATE: 3/31/10
SCALE: 1" = 1000'
PLAT: 1 of 1
PROJECT: Williams

136 East Third Street
Rifle, Colorado 81650
Ph: (970) 625-1330
Fax: (970) 625-2773



K:\2010\HIGHLANDS\CENTRAL\RG 23-14-298.CDW, 3/31/2010 4:16:34 PM, 1:1