

# ENSIGN

## Directional

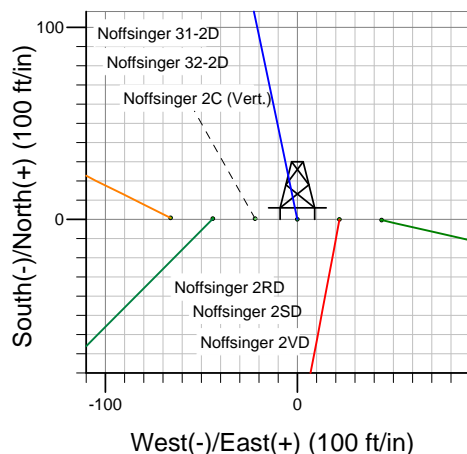
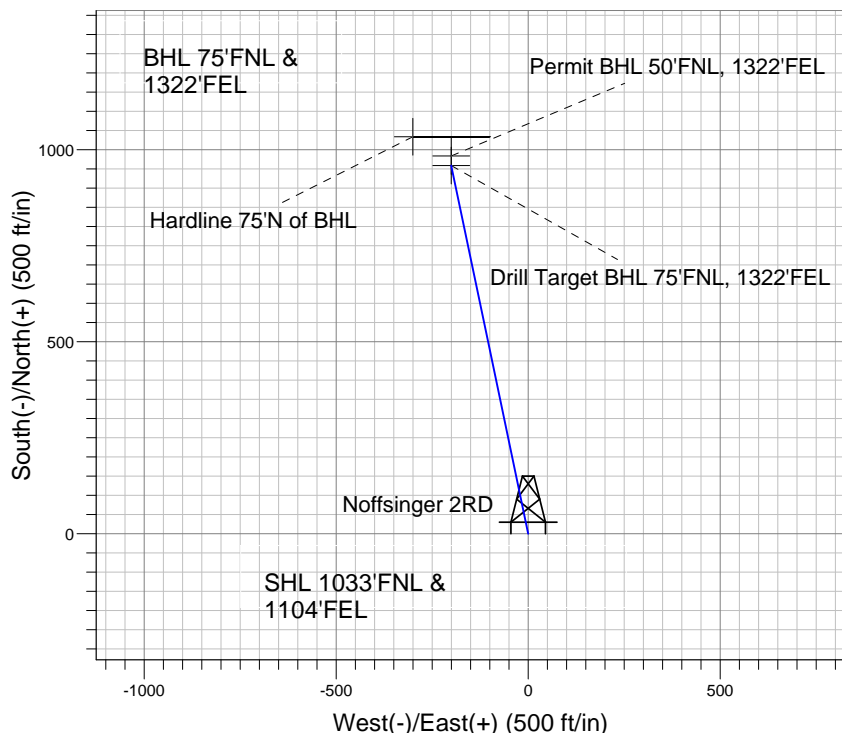
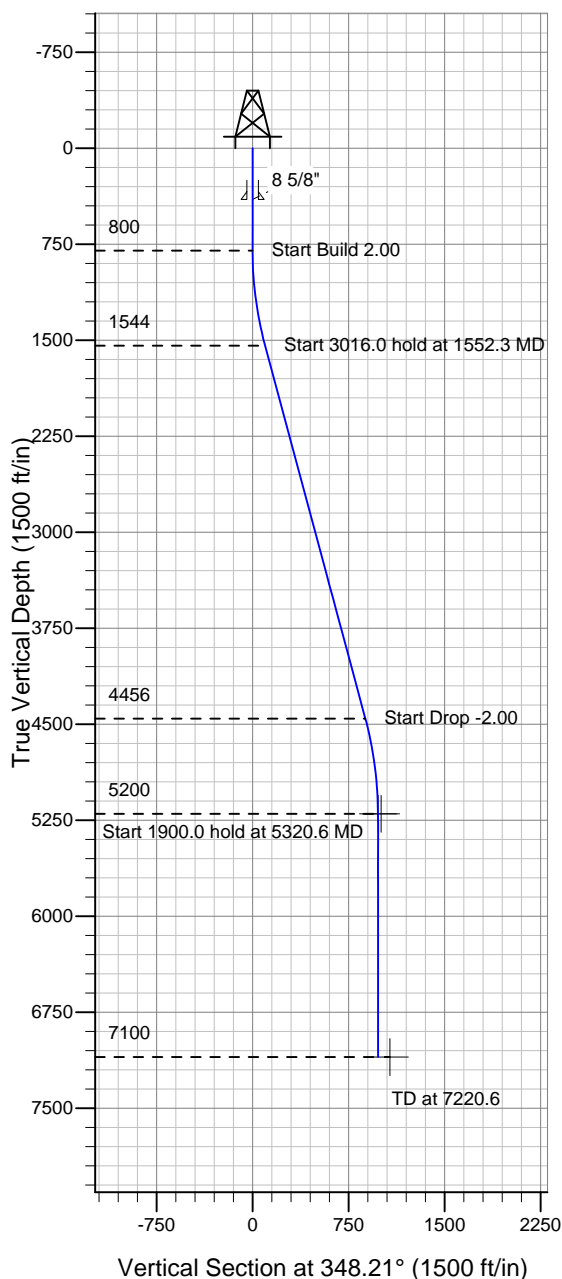
### Well Name: Noffsinger 2RD

Surface Location: Noffsinger Pad Sec.2-T5N-R65W  
North American Datum 1983 , US State Plane 1983 , Colorado Northern Zone

Ground Elevation: 4647.0

+N/-S	+E/-W	Northing	Easting	Latitude	Longitude	Slot
0.0	0.0	1401529.28	3243644.15	40° 25' 56.276 N	104° 37' 29.125 W	
Original Well Elev WELL @ 4660.0ft (Original Well Elev)						

### PETROLEUM DEVELOPMENT CORP Weld County CO



Noffsinger 2RD  
Plan#1 (6-14-10)  
11:32, June 18 2010



Azimuths to True North  
Magnetic North: 8.95°  
Magnetic Field  
Strength: 53337.5nT  
Dip Angle: 67.16°  
Date: 12/31/2009  
Model: IGRF200510

#### WELLBORE TARGET DETAILS (LAT/LONG)

Name	TVD	+N/-S	+E/-W	Latitude	Longitude	Shape
Drill Target BHL 75'FNL, 1322'FEL	5200.0	958.7	-200.2	40° 26' 5.750 N	104° 37' 31.714 W	Point
Permit BHL 50'FNL, 1322'FEL	5200.0	983.7	-200.2	40° 26' 5.996 N	104° 37' 31.714 W	Point
Hardline 75'N of BHL	7100.0	1033.7	-300.2	40° 26' 6.491 N	104° 37' 33.007 W	Polygon

#### SECTION DETAILS

Sec	MD	Inc	Azi	TVD	+N/-S	+E/-W	DLeg	TFace	VSec	Target
1	0.0	0.00	0.00	0.0	0.0	0.0	0.00	0.00	0.0	
2	800.0	0.00	0.00	800.0	0.0	0.0	0.00	0.00	0.0	
3	1552.3	15.05	348.21	1543.7	96.1	-20.1	2.00	348.21	98.2	
4	4568.3	15.05	348.21	4456.3	862.6	-180.1	0.00	0.00	881.2	
5	5320.6	0.00	0.00	5200.0	958.7	-200.2	2.00	180.00	979.4	Drill Target BHL 75'FNL, 1322'FEL
6	7220.6	0.00	0.00	7100.0	958.7	-200.2	0.00	0.00	979.4	