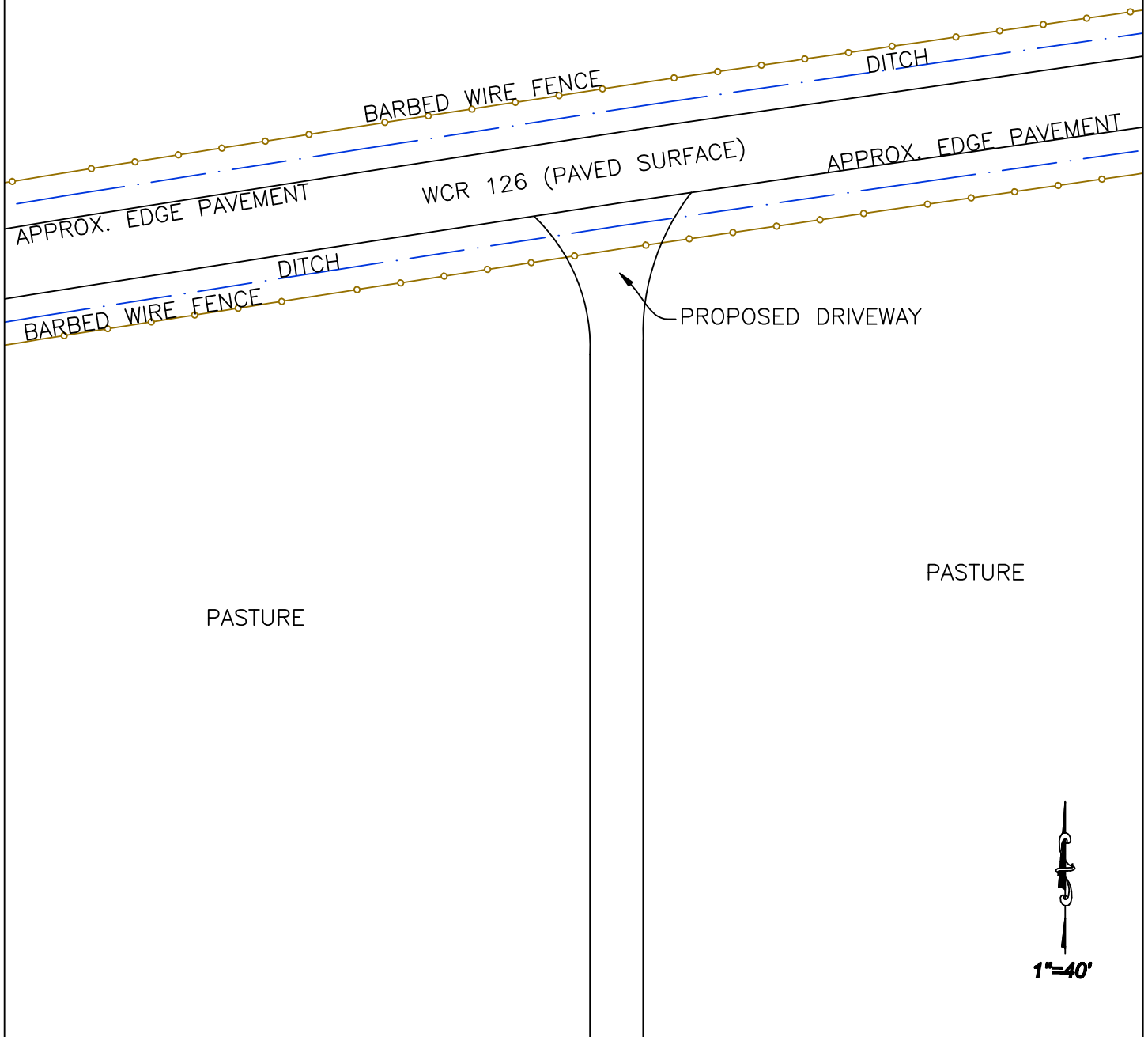


PROPOSED DRIVEWAY PLAN VIEW
LITTLE OLLIE 36-11-67

±2.0 MILES TO LITTLE OLLIE
36-11-67 ACCESS FROM HWY 85,
±5.7 MILES TO LITTLE OLLIE
36-11-67 ACCESS FROM I-25
ALONG PROPOSED ROUTE(S)

DRIVEWAY LOCATION:
SE1/4 SE1/4 SECTION 24,
T11N R67W

PASTURE



Revised: 5/28/2010



WESTERN LAND SERVICES

Sheridan, WY 82801 (307)673-1817

DP: L:\Slawson\Permitting_Book\Little_O... Date: 5/19/2010

SLAWSON EXPLORATION COMPANY, INC
LITTLE OLLIE 36-11-67

SL: SE1/4 SE1/4 SECTION 36, T11N R 67W
BL: NW1/4 NE1/4 SECTION 36, T11N R67W
6TH PM, WELD COUNTY, COLORADO